



**Middle Atlantic Products**

EXCEPTIONAL SUPPORT & PROTECTION™

# RDR Series Residential Designer Rack



EIA/TIA Compliant

**Available configured to simplify ordering,  
or unconfigured for maximum flexibility**

## Features

- Configured models ship complete with sturdy, 4 point shelves and filtered and surge protected power
- Integrated cable management channels with brackets for clean installation
- Deep, useable shelf space holds larger components and is ventilated for airflow
- Included trim strips and hidden casters reinforce overall "designer" aesthetics
- Easy to unpack and load



## Architects and Engineers' Specifications

EIA compliant 19" equipment rack shall be Middle Atlantic Products model# RDR-\_\_ refer to chart). Overall dimensions shall be \_\_"H x 24.63"W x 25"D (refer to chart). Useable height shall be \_\_ (15, 24, 35) rackspaces, \_\_ (28", 42", 61.25") useable depth shall be 18". RDR shall provide a weight capacity of capacity of 800 lbs. Rack shall be constructed of the following materials: top shall be 1-1/8" thick black thermolaminate, uprights shall be aluminum extrusions, base shall be constructed of 14-gauge steel and all structural elements shall be finished in a durable black powder coat. Rack shall come equipped with two pairs of 11-gauge steel rackrail with tapped 10-32 mounting holes in universal EIA spacing, black e-coat finish and numbered rackspaces. Configured rack shall include \_\_ vented 4 point shelves (refer to chart) with a 150 lb. weight capacity, vent panels, vertical 15 Amp power with 2-stage surge protection, remote notification and circuit breaker, silver trim strips and hidden casters. RDR Enclosure shall be GREENGUARD Indoor Air Quality Certified for Children and Schools. RDR enclosure shall comply with the requirements of RoHS EU Directive 2002 / 95 / EC. RDR shall be manufactured by an ISO 9001 and ISO 14001 registered company. RDR enclosure shall be warranted to be free from defects in material or workmanship under normal use and conditions for the lifetime of the rack.

### OPTIONS

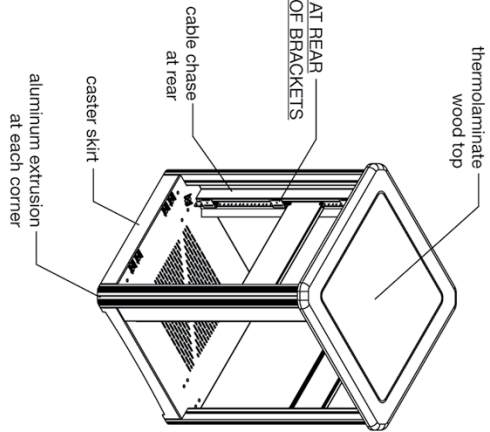
- 2 space vented shelf shall be RDR-SH2
- Side panels and rear access panel shall be RDR-S3-SPBK-BK for the RDR-S3, RDR-S4-SPBK-BK for the RDR-S4, RDR-S5-SPBK-BK for the RDR-S5
- Fan kit shall provide 100 CFM, install into the optional rear access panel, and shall be DCFANKIT-4

**CUSTOMIZABLE SPECIFICATION CLIPS AVAILABLE AT MIDDLEATLANTIC.COM**

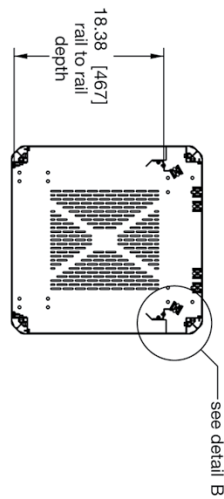
# Unconfigured RDR Series dimensions

All dimensions in inches unless otherwise noted [All dimensions in brackets are in millimeters]

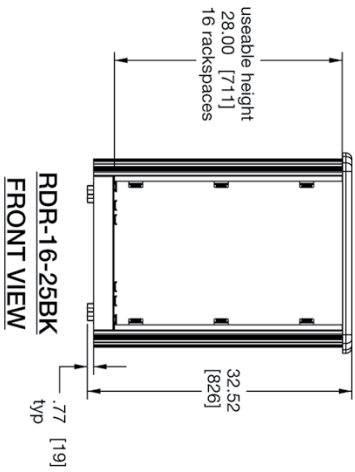
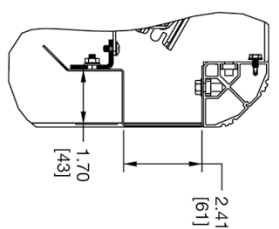
CABLE BRACKETS AT REAR  
 RDR-16-25BK 6  
 RDR-24-25BK 8  
 RDR-35-25BK 12



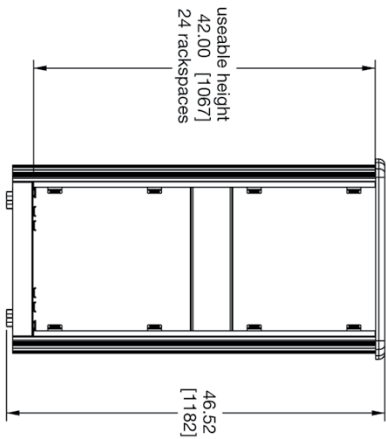
SECTION A-A



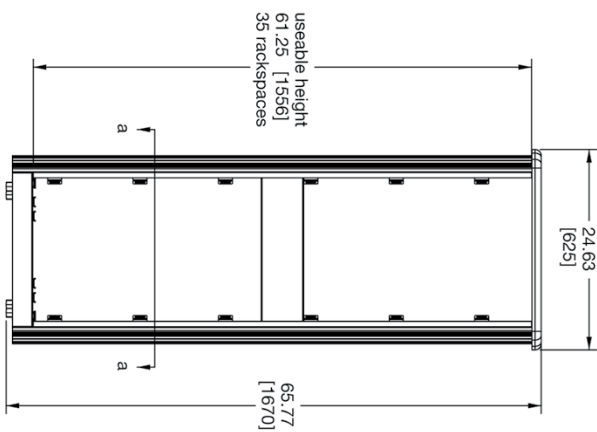
DETAIL B



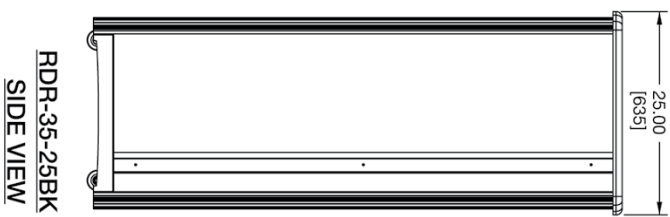
RDR-16-25BK  
FRONT VIEW



RDR-24-25BK  
FRONT VIEW



RDR-35-25BK  
FRONT VIEW

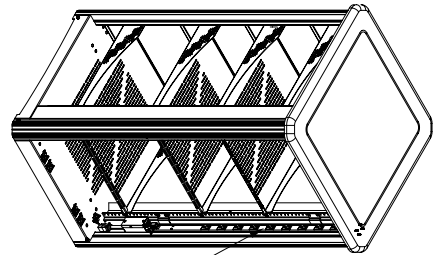
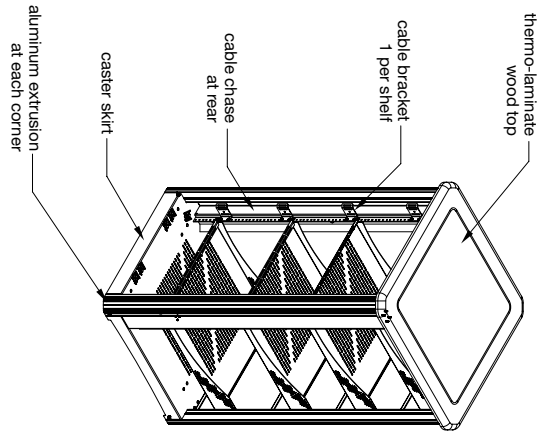


RDR-35-25BK  
SIDE VIEW



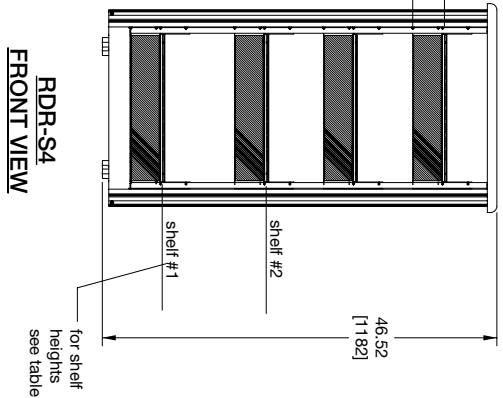
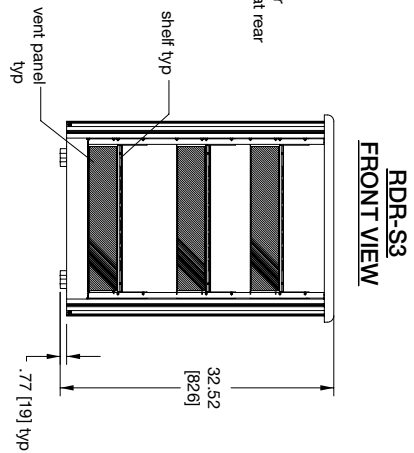
# Configured RDR Series dimensions

All dimensions in inches unless otherwise noted [All dimensions in brackets are in millimeters]

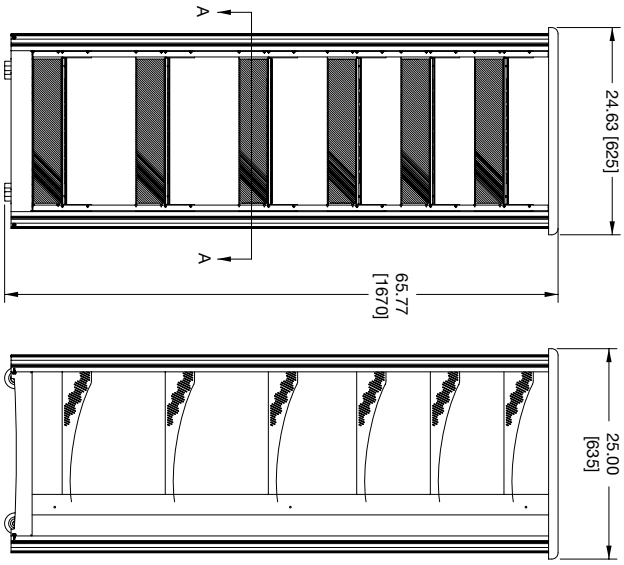
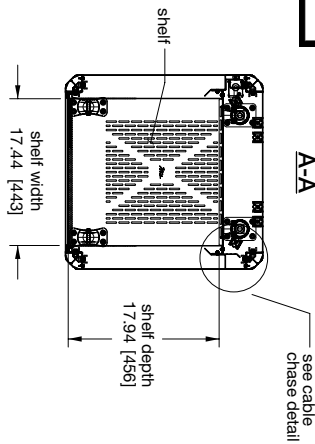


**POWER STRIP**

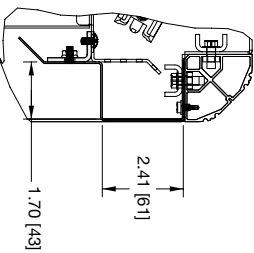
Part #	# of Outlets
RDR-S3	6
RDR-S4	10
RDR-S6	10



**SECTION A-A**



for shelf depth see section A-A above



**SHELF HEIGHT TABLE**  
(from floor in inches)

# of Shelves	RDR-S3	RDR-S4	RDR-S6
1	6.90 [175]	6.90 [175]	6.90 [175]
2	17.40 [442]	19.15 [486]	19.15 [486]
3	26.15 [664]	29.65 [753]	31.40 [798]
4		40.15 [1020]	41.90 [1064]
5			50.65 [1287]
6			59.40 [1509]

