

Technical Data Sheet	DSNR062-2
Product Description	Straight & 90 degree elbow flange fittings for large diameter corrugated flexible conduit
Product Range	MPS large diameter conduit fittings

# Atkore™ Flexicon



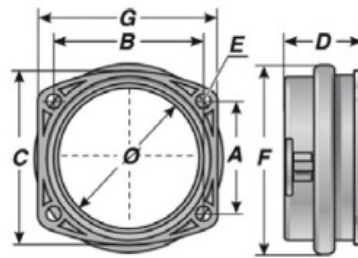
www.atkore.com/flexicon



## Certificate of Acceptance

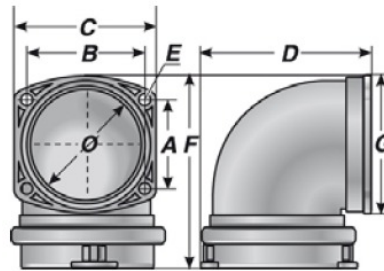
PA05/06589

### MPS Conduit Fitting



Nominal Size	Part Number	PADS Catalogue Number	Nominal Dimensions (mm)								Pack Qty
			A	B	C	D	E	F	G	Ø	
80	MPS-80-FLB	0086/008802	60	80	94	52	7.5	106	96	70	1
106	MPS-106-FLB	0086/008803	74	108	126	52	7.5	132	126	95	1

### MPS Conduit Fitting



Nominal Size	Part No	Part No	Dimensions (mm)								Pack Qty
			A	B	C	D	E	F	G	Ø	
80	MPS90-80-FLB	0086/008804	60	80	96	110	7.5	137	94	77	1
106	MPS90-106-FLB	0086/008805	74	108	127	144	7.5	167	128	111	1

### Material

Nylon PA6

### Colour

Black

### Fire Performance

Self extinguishing, halogen, sulphur and phosphorous free

### IP Rating

IP65

### Applications

Ideal for use in both internal and external applications, FPY large diameter conduit provides excellent resistance to abrasion, oil and solvents.

Typical applications:  
Machines and large control cabinets.

### Pull-off (tensile) strength

100kg with NRFPAS80

### Temperature Performance

-40°C to +120°C

### Compliance, Approvals & Accreditation



IEC EN 61386

### Typical Applications



Machinery and OEM's



Rail & Trackside

Errors, omissions and amendments excepted. As part of continuing product development Flexicon Ltd reserve the right to alter product specifications without prior notice. Data given is correct at time of compilation. Product specification and application data is for guidance only and does not constitute a warranty of any kind, either expressed or implied for Flexicon products or their suitability for a specific purpose. Third party approvals maybe limited to certain sizes within a product range.

Created by:  
Colin Legg - Marketing Director

Approved by:  
Alex Smith - Technical Director

Date:  
July 2023

Page Number;  
Page 1 of 1