



Industry's Fastest Terminating Panel.

Third-Hand Installation Aid.

Exceeds TSB-155 10GbE Over 55 Meters.

FEATURES

- Category 6 compliant.
- Backwards compatible to Category 5e, 5 and 3.
- IDC pair splitting tower allows for minimum disruption to cable twist.
- HPW icon compatible.
- High performance BeCu contacts.
- Fully enclosed, protected PCB circuitry.
- Compatible with all industry 110 impact tools.

SPECIFICATIONS

- ◆ Panel material: 14 ga. steel rolled-edge construction.
- ◆ Durable, black powder coat finish.
- ◆ Contact material: Beryllium copper with a minimum of 50 micro-inch Gold plating over nickel underplating.
- ◆ 2000+ mating cycles with FCC 8-position plug.
- ◆ Dimensions and mounting holes per EIA-310D.
- ◆ Towers: Flame retardant UL 94V-0.
- ◆ Jack Housing: flame retardant UL 94V-0.
- ◆ Contacts: Copper alloy with tin-lead plating.
- ◆ Housing designed to accommodate larger Category 6 conductors.

STANDARDS/LISTINGS/VERIFICATIONS

- ANSI/TIA/EIA-568-B.2-1 Category 6 component compliant.
- IEEE 802.3af DTE Power and MDI verified.
- IEEE 802.3ab 10-Gigabit Ethernet verified.
- 3rd party verified to 650 MHz (channel).
- UL Listed 1863.
- FCC part 68.5, subpart F compliant.
- IEC-603-7 compliant.
- ISO 11801 Class E compliant.

HUBBELL NextSpeed Patch Panels, Category 6

Patented Panel ID Label Holders

Accepts Hubbell laser printable label sheets and industry recognized .5" hand held printer tape.

Rolled Edge Construction

provides rugged strength to eliminate flex during termination.

Cable Management

Optional cable management/strain relief bar (PCBLMGT) clips to the rear of panel without additional hardware.

Centered Port Identification

allows for greater visibility of labels and clean patch cord organization on a 48-port patch panel.

Universal Wiring

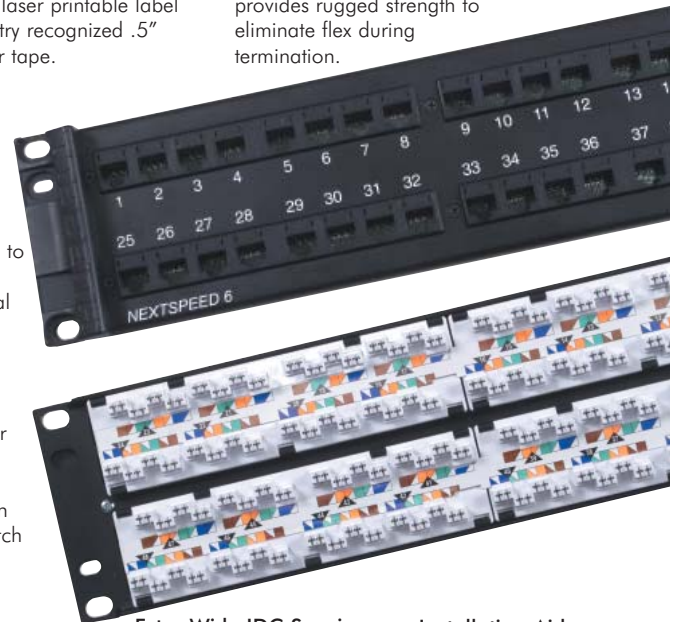
Terminate using either T568B or T568A Wiring schemes.

Extra Wide IDC Spacing

Provides increase space for lacing and routing cable.

Installation Aid

- Third hand location pin.
- Hands-free installation.
- Simplifies rack layout.



NEXTSPEED® 6 panels exceed Category 6 ANSI/TIA/EIA 568-B.2-1 component specifications. This provides higher bandwidth to transmit data in excess of 250MHz, and allows your cabling system an error-free transmission path. Additionally, **NEXTSPEED® 6** panels are "center balanced" with Hubbell PCX6 patch cords to minimize common mode emissions and provide greater noise immunity.

Don't jeopardize your network, look to Hubbell's **NEXTSPEED®** Category 6 component solution products to "future-proof" your network, while providing the migration path required in today's demanding network environments and tomorrows emerging applications.

APPLICATIONS SUPPORTED

- ▲ Gigabit Ethernet 1000BASE-TX.
- ▲ 10/100/1000BASE-T.
- ▲ IEEE 802.3ab (10^{-10}) Gigabit Ethernet Verified.
- ▲ IEEE 802.3af DTE Power compliant.
- ▲ 155/622 Mbps ATM.
- ▲ Analog voice and digital voice (VoIP).
- ▲ Analog (broadband, baseband) and digital video.
- ▲ 100 Mbps TP-PMD.

ORDERING INFORMATION



NEXTSPEED® Universal Patch Panel, Category 6

Delivery: 1 Category 6, 19" patch panel, Universal wiring insert, Clear plastic label holders, 1 kit of mounting hardware.

Ports	Height	Rack Units	Protected PCB Catalog No.	Universal Angled Catalog No.	Non-Protected PCB Catalog No.
24	1.75" (45)	1	P6E24U	P624VU	P624U
48	3.50" (89)	2	P6E48U	P648VU	P648U
96	7.00" (178)	4	P6E96U	-	-



ACCESSORIES

1-Punch Panel Termination Tool



Description	Catalog No.
1-Punch panel tool with head and blades	TX4PP
1-Punch panel replacement head	TX4PPH
1-Punch panel replacement blades	TX4PPBL
1-pair punch-down tool blade	TBLP

Rear Cable Management Bars



Description	Catalog No.
Clips to rear of panels	PCBLMGT
Screws to rear flange of 19" rack	MCCSWB19

Hubbell Labeling Solutions

Use with Hubbell Labeling Software available on-line at www.hubbell-premise.com



Description	Catalog No.
Patch Panel Labels, 8-Port, laser-printable, adhesive Paper (use w/plastic holders supplied with panel)	XPLPPA10W XPLPP10W*
Patch Panel ID Labels, Laser Printable (Pack of 10) Paper (use with vertical ID label holders on panel)	XPLPPID10W
Extra Paper Label Holders	
8-port clear plastic paper holders (Pack of 50)	XPHPP50
1U panel ID label holders (Pack of 10)	XPHPPID1U10
2U panel ID label holders (Pack of 10)	XPHPPID2U10

RELATED PRODUCTS

XCELERATOR™ Jacks, Category 6

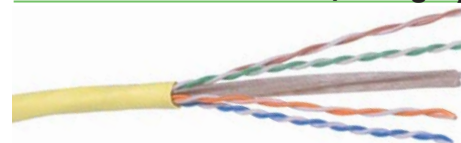
Unit Package: 1 per Bag. Order Qty.: Carton of 25

Catalog No. **HXJ6XX**

- XX = Color:
 'AL' = Almond 'OW' = Office White
 'B' = Blue 'OR' = Orange
 'BK' = Black 'P25' = Purple*
 'EI' = Electric Ivory 'R' = Red
 'GL25' = Gold* 'TI' = Telco Ivory
 'GY' = Gray 'W' = White
 'GN' = Green 'Y' = Yellow
 * 25-packs only.



NEXTSPEED® UTP Cable, Category 6, 4-Pair



Color	Catalog No. Spool	Riser REELEX*	Catalog No. Spool	Plenum REELEX*
Blue	C6SRB	C6RRB	C6SPB	C6RPB
Gray	C6SRGY	C6RRGY	C6SPGY	C6RPGY
White	C6SRW	C6RRW	C6SPW	C6RPW
Yellow	C6SRY	C6RRY	C6SPY	C6RPY

* REELEX is licensed and patented by Windings Inc.

NEXTSPEED® Universal Patch Cords, Category 6

Delivery: 1 patch cord

Catalog No. **PCX6XX***

- XX = Standard Color:
 'B' = Blue; 'BK' = Black;
 'GY' = Gray; 'Y' = Yellow



For other colors replace color designation with one of the following:
 OR = Orange; R = Red; GN = Green; P = Purple; W = White.

* = Standard Length:
 '03'=3'; '06'=6'; '08'=8'; '10'=10'; '12'=12'; '16'=16'; '20'= 20';
 MTO lengths: 25', 30', 35', 40', 45', 50', 55', 60', and 75'.



Hubbell Premise Wiring

HUBBELL INCORPORATED (Delaware)
 14 Lord's Hill Road • Stonington, CT 06378-0901 • (860) 535-8326 • 800-626-0005
 Fax: (860) 535-8328 • Internet site: <http://www.hubbell-premise.com>

Worldwide Locations

Hubbell Premise Wiring, Asia Pacific	852-2836-7131	Fax: 852-2836-7132	Hubbell Premise Wiring, Latin America	305-408-4501	Fax: 305-408-8201
Hubbell Canada Inc.	905-839-1138	Fax: 905-839-9108	Hubbell de Mexico, S.A. de C.V.	(5255) 9151-9999	Fax: (5255) 9151-9989
Hubbell Premise Wiring, Central America	506-309-4158	Fax: 506-260-1616	Hubbell Premise Wiring, Middle East	971-4-393-4192	Fax: 971-4-393-4194
Hubbell Premise Wiring, China	8621-6309-0119	Fax: 8621-6309-0122	Hubbell-Taian Co., Ltd., Taiwan	886-2-2522-1862	Fax: 886-2-2522-1872
Hubbell Premise Wiring, Colombia	571-245-8940	Fax: 571-340-0925	Hubbell Premise Wiring, Turkey	90-216-313-5016	Fax: 90-216-414-8148
Hubbell Premise Wiring, Europe	44-01283 500500	Fax: 44-01283 500400	Hubbell Premise Wiring, Venezuela	58-416-680-7453	Fax: 58-281-274-7900
Hubbell Int'l. Inc., Korea Branch	82-2-(0)2607-1363	Fax: 82-2-(0)2603-7386			