


U.I. Lapp GmbH	PRODUCT INFORMATION	
EPIC® H-BVE 3		05.11.2015

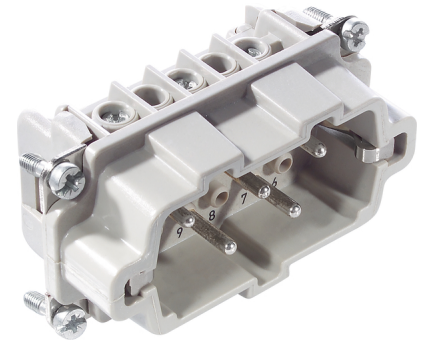
These high-voltage inserts are additionally equipped with 2 switching contacts
 These high-voltage inserts are additionally equipped with 2 switching contacts
 With the relevant wiring, the lagging switch contacts interrupt the power supply
 before the working contacts are separated



Industrial machinery and plant engineering



Temperature-resistant



Info

Multipole insert with lagging switch contacts
 Switching operations possible for disconnecting under load

Application range

Plant engineering
 Mechanical engineering

Remark

Photographs are not to scale and do not represent detailed images of the respective products.


Technical Data

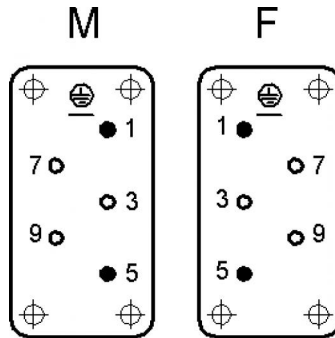
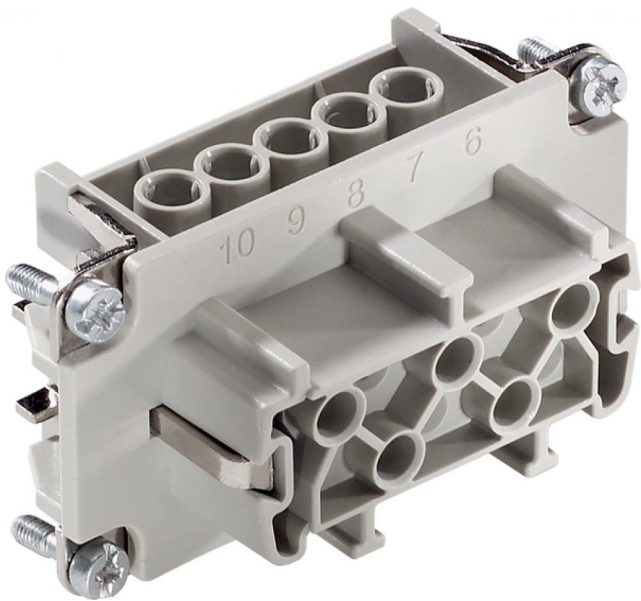
Stripping length (mm):	8
Rated voltage (V):	IEC: 630 V UL: 600 V CSA: 600 V
Rated impulse voltage:	6 kV
Rated current (A):	IEC: 16 A UL: 16 A CSA: 16 A
Contact resistance:	< 2 mOhm
Contacts:	Copper alloy, hard silver-plated
Number of contacts:	3 + 2 + PE
Termination methods:	Screw termination: 0.5 - 2.5 mm ²
Cycle of mechanical operation:	100
Temperature range:	-40°C to +100°C, short-term up to +125°C
VDE-tested:	Certified production control: VDE-REG. no.: B437 UL-tested: UL File Number: E75770
Degree of soiling:	3

Product Management	Document: LAPP_PRO105072EN.pdf	1 / 3
--------------------	--------------------------------	-------



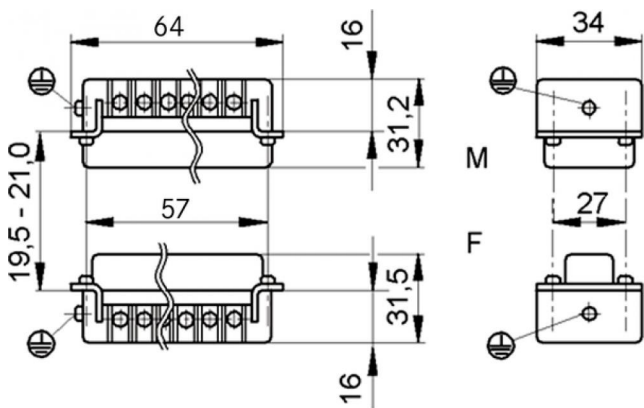
Part number	Article description	Contact type	Wire protection	Number of operating contacts	Pieces / PU
H-BVE 3 screw termination					
10210010	H-BVE 3 SS	male	yes	3 + 2	10
10211010	H-BVE 3 BS	female	yes	3 + 2	10
10210110	H-BVE 3 SS	male		3 + 2	10
10211110	H-BVE 3 BS	female		3 + 2	10

U.I. Lapp GmbH	PRODUCT INFORMATION	
EPIC® H-BVE 3		05.11.2015



●
Schaltkontakt
mating contact
contact de branchement

○
Arbeitskontakt
working contact
contact de travail



Product Management	Document: LAPP_PRO105072EN.pdf	3 / 3
--------------------	--------------------------------	-------