


U.I. Lapp GmbH	<b>PRODUCT INFORMATION</b>	
	<b>EPIC® H-BVE 3</b>	05.11.2015

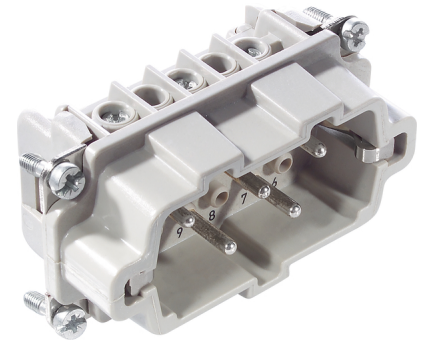
These high-voltage inserts are additionally equipped with 2 switching contacts  
 These high-voltage inserts are additionally equipped with 2 switching contacts  
 With the relevant wiring, the lagging switch contacts interrupt the power supply  
 before the working contacts are separated



Industrial machinery and plant engineering



Temperature-resistant



### Info

Multipole insert with lagging switch contacts  
 Switching operations possible for disconnecting under load

### Application range

Plant engineering  
 Mechanical engineering

### Remark

Photographs are not to scale and do not represent detailed images of the respective products.


### Technical Data

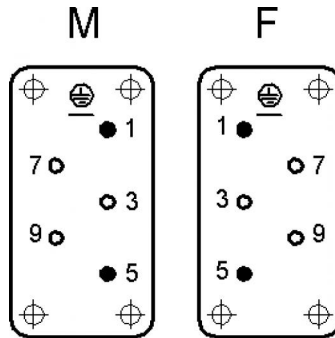
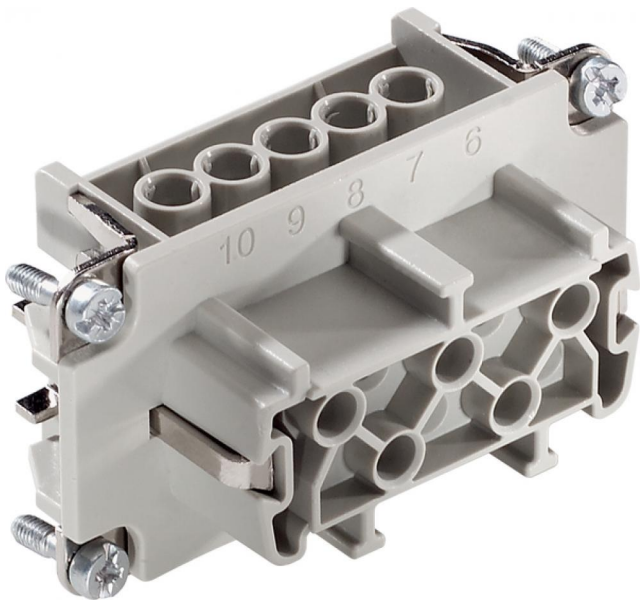
Stripping length (mm):	8
Rated voltage (V):	IEC: 630 V UL: 600 V CSA: 600 V
Rated impulse voltage:	6 kV
Rated current (A):	IEC: 16 A UL: 16 A CSA: 16 A
Contact resistance:	< 2 mOhm
Contacts:	Copper alloy, hard silver-plated
Number of contacts:	3 + 2 + PE
Termination methods:	Screw termination: 0.5 - 2.5 mm <sup>2</sup>
Cycle of mechanical operation:	100
Temperature range:	-40°C to +100°C, short-term up to +125°C
VDE-tested:	Certified production control: VDE-REG. no.: B437 UL-tested: UL File Number: E75770
Degree of soiling:	3

Product Management	Document: LAPP_PRO105072EN.pdf	1 / 3
--------------------	--------------------------------	-------



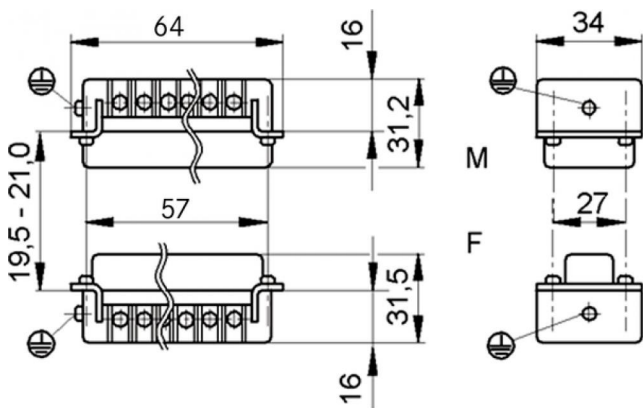
Part number	Article description	Contact type	Wire protection	Number of operating contacts	Pieces / PU
H-BVE 3 screw termination					
10210010	H-BVE 3 SS	male	yes	3 + 2	10
10211010	H-BVE 3 BS	female	yes	3 + 2	10
10210110	H-BVE 3 SS	male		3 + 2	10
10211110	H-BVE 3 BS	female		3 + 2	10

U.I. Lapp GmbH	<b>PRODUCT INFORMATION</b>	
<b>EPIC® H-BVE 3</b>		05.11.2015



● Schaltkontakt  
mating contact  
contact de branchement

○ Arbeitskontakt  
working contact  
contact de travail



Product Management	Document: LAPP_PRO105072EN.pdf	3 / 3
--------------------	--------------------------------	-------