


U.I. Lapp GmbH	PRODUCT INFORMATION	
	EPIC® H-DD 216	05.11.2015

The H-DD series with machined crimp contacts - for a high number of pin in very tight spaces.
The H-DD series with machined contacts is designed for a high number of pins in very tight spaces. This allows for smaller housing types to be chosen.



Industrial machinery and plant engineering



Space requirement



Info

Highest packing density for compact connectors

Application range

Mechanical engineering
Light & sound technology
Plastics industry

Remark

Photographs are not to scale and do not represent detailed images of the respective products.


Technical Data

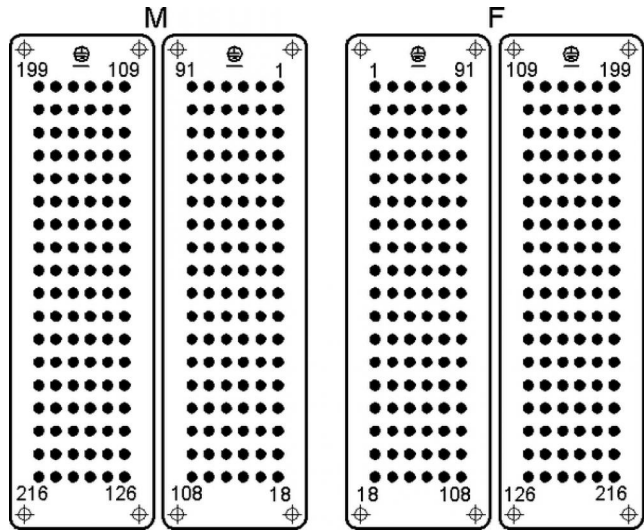
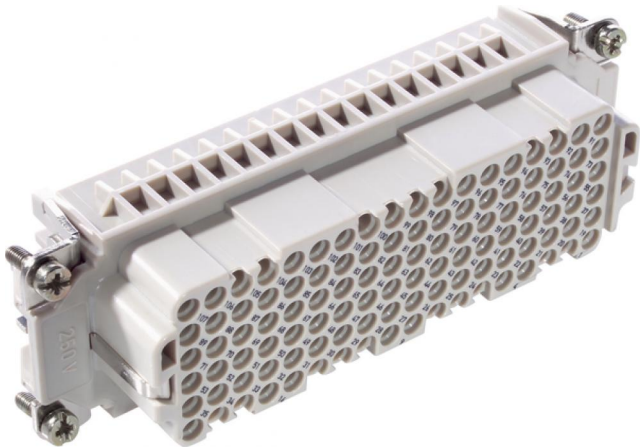
Rated voltage (V):	IEC: 250 V UL: 600 V CSA: 600 V
Rated impulse voltage:	2.5 kV
Rated current (A):	IEC: 10 A UL: 8.5 A CSA: 10 A
Contact resistance:	< 3 mOhm
Contacts:	Copper alloy, hard silver/gold-plated
Number of contacts:	108 + PE
Termination methods:	Crimp termination: 0.14 - 2.5 mm ²
Cycle of mechanical operation:	100
Temperature range:	-40°C to +100°C, short-term up to +125°C
VDE-tested:	Certified production control: VDE-REG. no.: B437 UL-tested: UL File Number: E75770
Degree of soiling:	2

Product Management	Document: LAPP_PRO142570EN.pdf	1 / 3
--------------------	--------------------------------	-------



Part number	Article description	Contact type	Article designation	Number of operating contacts	Pieces / PU
H-DD 216 crimp termination					
11285500	H-DD 108 SCM	male	machined	109 - 216	5
H-DD 108 crimp termination					
11285300	H-DD 108 SCM	male	machined	1 - 108	5
11286300	H-DD 108 BCM	female	machined	1 - 108	5
11286500	H-DD 108 BCM	female	machined	109 - 216	5

U.I. Lapp GmbH	PRODUCT INFORMATION	
EPIC® H-DD 216		05.11.2015



Product Management	Document: LAPP_PRO142570EN.pdf	3 / 3
--------------------	--------------------------------	-------