

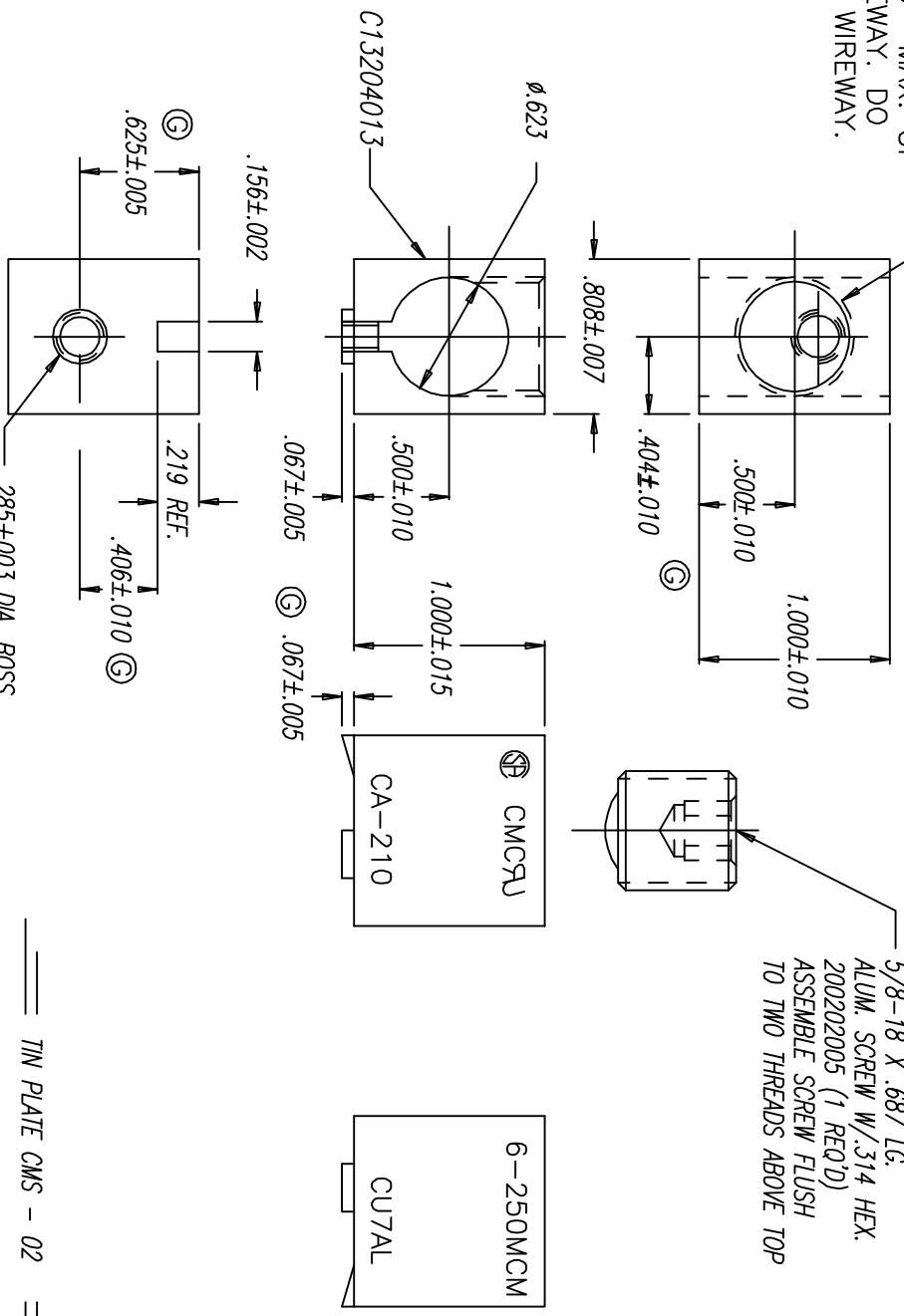
A | B | C | D | E | F | G | H | I | J

ASM. NO. C13496014
PART NO.

1 TAP WITHIN .140" MAX. OF BOTTOM OF WIREWAY. DO NOT DRILL PAST WIREWAY.

TAP 5/8-18 UNF-2B X .67 DP. REF.

5/8-18 X .687 LG. ALUM. SCREW W/.314 HEX. 200202005 (1 REQ'D) ASSEMBLE SCREW FLUSH TO TWO THREADS ABOVE TOP



.285±.003 DIA. BOSS
TAP 1/4-20 UNF-2B THRU
DRILL .201 DIA. THRU

TIN PLATE CMS - 02

REV.	DESCRIPTION	ECN	DATE	INT.	UNLESS OTHERWISE SPECIFIED .00 = ±.015 .000 = ±.005 ANGLES = ±1/2°	DRAWN BY NDC 3-16-90	NAME OF PART LUG ASSEMBLY	CAT. NO. CA-210
M	.808±.007 WAS .812±.010, .404±.010 WAS .406±.010	10444	10/06	SESS	[X] = DIMENSION IN MILLIMETERS		200601002 6063-16 ALUM	SCALE FULL
0	1.000±.005 WAS 1.000±.010	10880	07/07	JKO				
P	1.000±.010 WAS 1.000±.005	10950	07/07	JKO				
Q	ADDED C13204013 NOTE		07/07	JKO				
R	.406±.010 WAS .406	10036	09/07	JKO				

CLASS A DOCUMENT
THIS INFORMATION IS PROPRIETARY TO CONNECTOR MFG. CO. AND IS NOT TO BE DISCLOSED OUTSIDE OF CONNECTOR MFG. CO. WITHOUT A CONFIDENTIALITY AGREEMENT

CONNECTOR MFG. CO. HAMILTON, OHIO