

# WebberElectronics®



IEC Connector EN60320 / NEMA Receptacle / Power Entry Module  
Rocker Switch / Wire Assembly & Custom Design

## IEC EN60320

P.2 ~ P.25

### Power Inlet

C8 :	0720 .....	P.2	0721 .....	P.3
	0721-2 .....	P.4	0721-3 .....	P.5
	0721-4 .....	P.6	0721-5 .....	P.7
	0721-6 .....	P.8	0721-7 .....	P.9
C6 :	0724 .....	P.10 ~ P.11		
C14 :	0707-1 .....	P.12 ~ P.13	0711 .....	P.14
	0711-2 .....	P.15 ~ P.17	0714 .....	P.18
	0714-P .....	P.19		
C18 :	0732 .....	P.20		
C20 :	0722 .....	P.21 ~ P.22		

### Power Outlet

Sheet F :	0708-1 .....	P.23	0718-1 .....	P.24
Sheet J :	0723 .....	P.25		

## NEMA Receptacle

P.26 ~ P.30

UL498 5-15R	0709 .....	P.26	0709-1 .....	P.27
	0710 .....	P.28	0719 .....	P.29
UL498 1-15R	0715 .....	P.30		

## Power Entry Module

P.31 ~ P.45

C8+Switch :	0721-SBP .....	P.31	0721-S .....	P.32
C6+Switch :	0724-SBP .....	P.33	0724-S .....	P.34 ~ P.36
C14+Switch :	0711-S .....	P.37 ~ 38	0711-1RS .....	P.39
C14+Sheet F :	0712-P .....	P.40		
C14+Fuse :	0717/0717-1 .....	P.41	0717-2 .....	P.42
C14+Fuse+Switch :	0717-1S .....	P.43	0717-2S .....	P.44
C20+Switch :	0722-S .....	P.45		

## Rocker Switch & Wire Assembly

P.46 ~ P.48

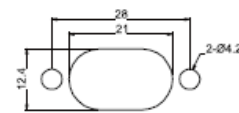
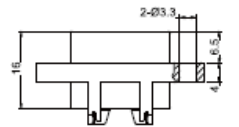
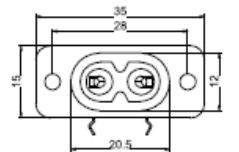
Rocker Switch :	R011A/R022A .....	P.46
Wire Assembly :	Wire Assembly .....	P.47 ~ P.48

# 0720 Series

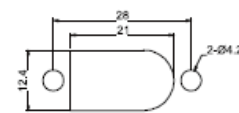
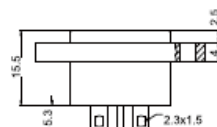
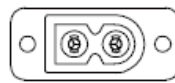


▶ Specification	▶ Inlet
<b>Power Rating</b>	2.5A 250V AC
<b>Electric Strength</b>	AC 2,000V for 1 Minute
<b>Contact Resistance</b>	30MΩ Max.
<b>Insulation Resistance</b>	100MΩ Min. at 500V DC
<b>Operating Temperature</b>	+70°C
<b>Materials</b>	Thermoplastic UL Flammability 94V-0 & Copper Alloy
<b>Mounting</b>	F : Screw-on P : Snap-in
<b>Terminal</b>	S : Solder Tab (13.5 x 0.3) P : PCB Pin
<b>Polarized Option</b>	A : Polarized B : Non-polarized

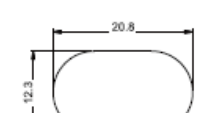
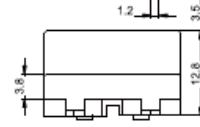
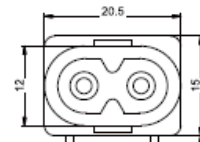
Unit : mm



PANEL CUT-OUT



PANEL CUT-OUT



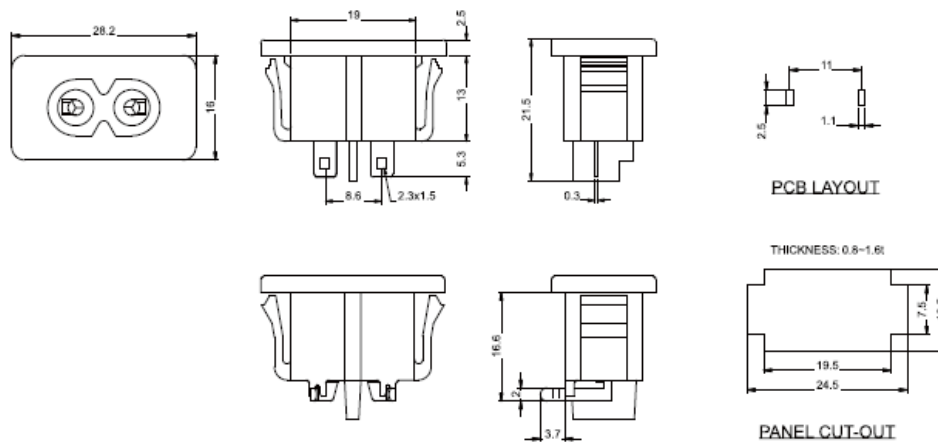
PANEL CUT-OUT

# 0721 Series



► Specification	► Inlet
<b>Power Rating</b>	2.5A 250V AC Europe & UL & CSA 7A 125V AC UL
<b>Electric Strength</b>	AC 2,000V for 1 Minute
<b>Contact Resistance</b>	30MΩ Max.
<b>Insulation Resistance</b>	100MΩ Min. at 500V DC
<b>Operating Temperature</b>	+70°C
<b>Materials</b>	Thermoplastic UL Flammability 94V-0 & Copper Alloy
<b>Polarized Option</b>	P : Non-Polarized S : Polarized
<b>Terminal</b>	P : PCB Pin SA : Solder Tab (13.5 x 0.3)

Unit : mm

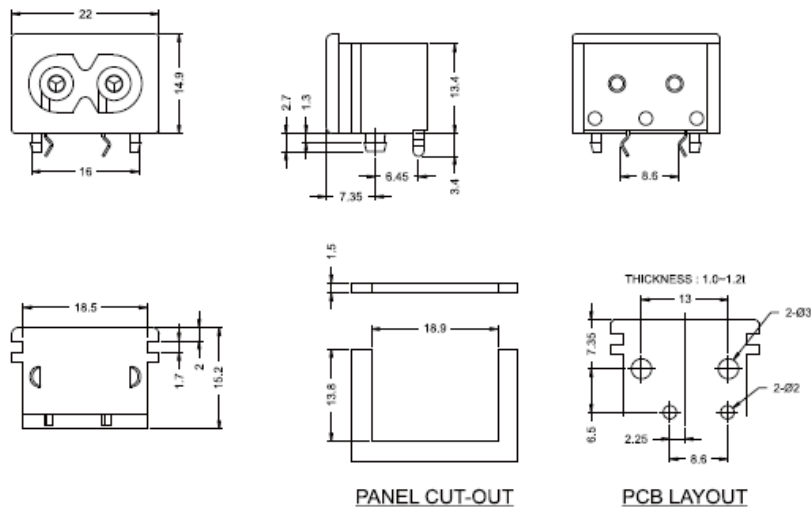


# 0721-2 Series



▶ Specification	▶ Inlet
<b>Power Rating</b>	2.5A 250V AC Europe & UL & CSA 7A 125V AC UL
<b>Electric Strength</b>	AC 2,000V for 1 Minute
<b>Contact Resistance</b>	30MΩ Max.
<b>Insulation Resistance</b>	100MΩ Min. at 500V DC
<b>Operating Temperature</b>	+90°C
<b>Materials</b>	Thermoplastic UL Flammability 94V-0 & Copper Alloy
<b>Mounting</b>	P : Snap-in
<b>Terminal</b>	P1 : PCB Pin

Unit : mm

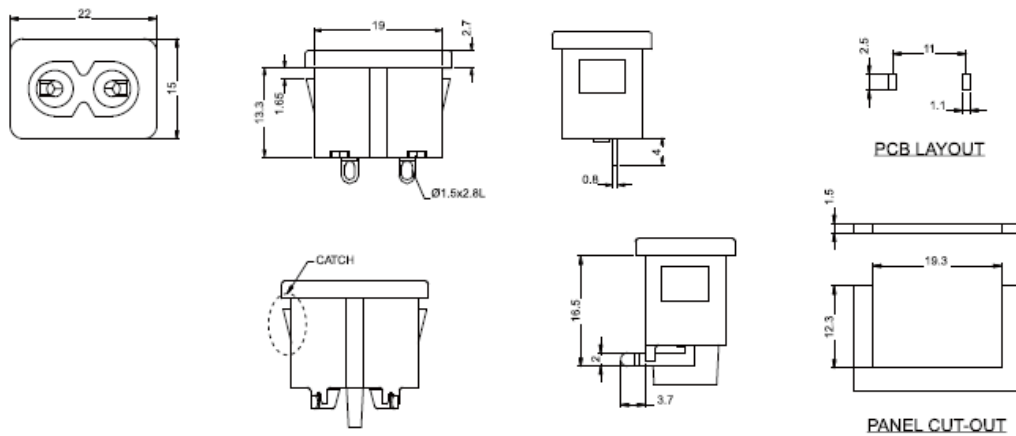


# 0721-3 Series



▶ Specification	▶ Inlet
<b>Power Rating</b>	2.5A 250V AC Europe & UL & CSA 7A 125V AC UL
<b>Electric Strength</b>	AC 2,000V for 1 Minute
<b>Contact Resistance</b>	30MΩ Max.
<b>Insulation Resistance</b>	100MΩ Min. at 500V DC
<b>Operating Temperature</b>	+85°C
<b>Materials</b>	Thermoplastic UL Flammability 94V-0 & Copper Alloy
<b>Mounting</b>	P : Snap-in
<b>Terminal</b>	P : PCB Pin S : Solder Tab (2.54 x 0.8)

Unit : mm

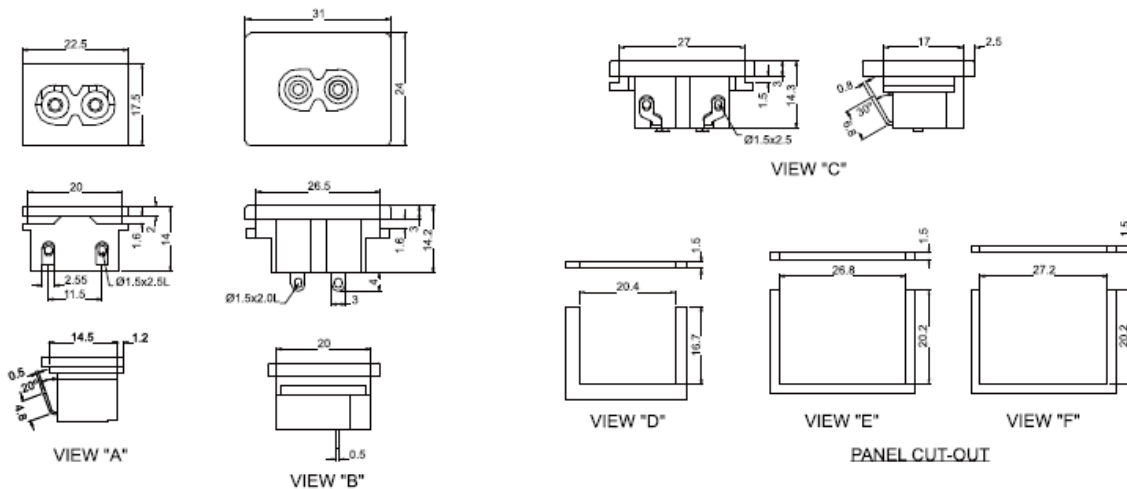


# 0721-4 Series

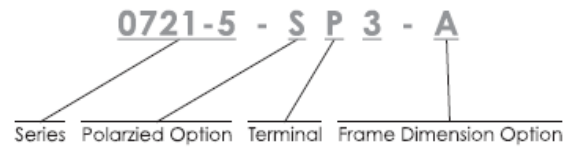


▶ Specification	▶ Inlet	
<b>Power Rating</b>	2.5A 250V AC Europe & UL & CSA 7A 125V AC UL	
<b>Electric Strength</b>	AC 2,000V for 1 Minute	
<b>Contact Resistance</b>	30MΩ Max.	
<b>Insulation Resistance</b>	100MΩ Min. at 500V DC	
<b>Operating Temperature</b>	+80°C	
<b>Materials</b>	Thermoplastic UL Flammability 94V-0 & Copper Alloy	
<b>Polarized Option</b>	P : Non-Polarized S : Polarized	
<b>Terminal</b>	S : Solder Tab	
<b>Dimension Option</b>	A : View A/D 1 : View B / E	3 : View C/F

Unit : mm

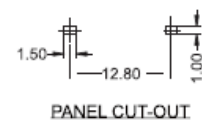
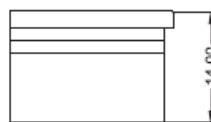
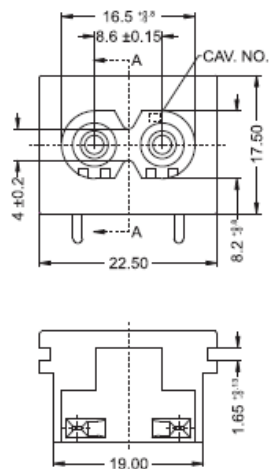


## 0721-5 Series



► Specification	► Inlet
<b>Power Rating</b>	2.5A 250V AC Europe & UL & CSA 7A 125V AC UL
<b>Electric Strength</b>	AC 2,000V for 1 Minute
<b>Contact Resistance</b>	30MΩ Max.
<b>Insulation Resistance</b>	100MΩ Min. at 500V DC
<b>Operating Temperature</b>	+90°C
<b>Materials</b>	Thermoplastic UL Flammability 94V-0 & Copper Alloy
<b>Polarized Option</b>	P : Non-Polarized S : Polarized
<b>Terminal</b>	P : PCB Pin
<b>Frame Dimension Option</b>	A : 23 x 18 B : 17.5 x 22.5

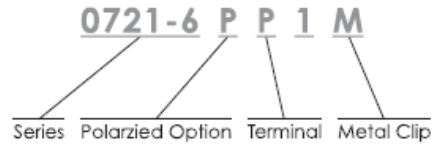
Unit : mm



PANEL CUT-OUT

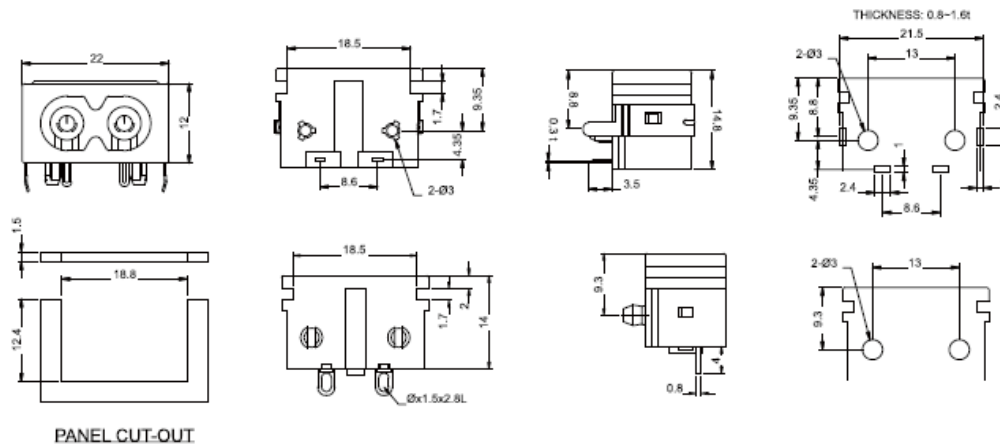


# 0721-6 Series



Specification	Inlet
<b>Power Rating</b>	2.5A 250V AC Europe & UL & CSA 7A 125V AC UL
<b>Electric Strength</b>	AC 2,000V for 1 Minute
<b>Contact Resistance</b>	30MΩ Max.
<b>Insulation Resistance</b>	100MΩ Min. at 500V DC
<b>Operating Temperature</b>	+100°C
<b>Materials</b>	Thermoplastic UL Flammability 94V-0 & Copper Alloy
<b>Polarized Option</b>	P : Non-Polarized S : Polarized
<b>Terminal</b>	P : PCB Pin S : Solder Tab (2.5 x 0.8)
<b>Metal Clip</b>	M : with Metal Clip

Unit : mm

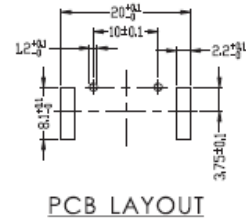
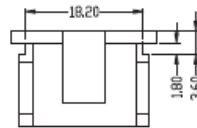
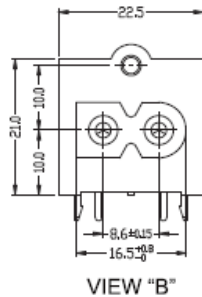
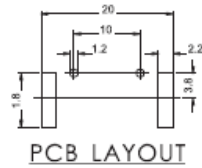
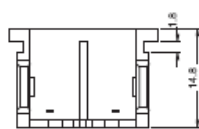
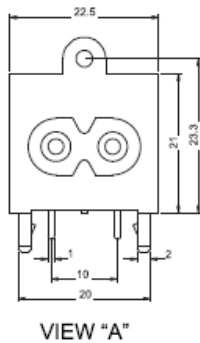


# 0721-7 Series

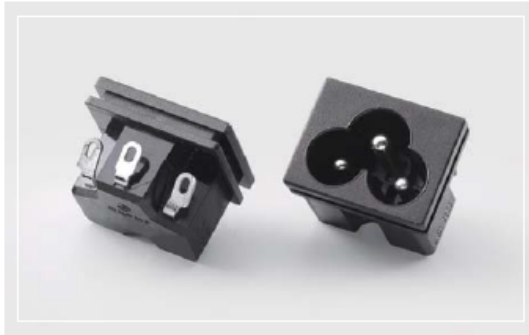


Specification	Inlet
<b>Power Rating</b>	2.5A 250V AC Europe & UL & CSA 7A 125V AC UL
<b>Electric Strength</b>	AC 2,000V for 1 Minute
<b>Contact Resistance</b>	30MΩ Max.
<b>Insulation Resistance</b>	100MΩ Min. at 500V DC
<b>Operating Temperature</b>	+85°C
<b>Materials</b>	Thermoplastic UL Flammability 94V-0 & Copper Alloy
<b>Polarized Option</b>	P : Non-Polarized S : Polarized
<b>Terminal</b>	P : PCB Pin
<b>Dimension Option</b>	2 : View A 3 : View B

Unit : mm

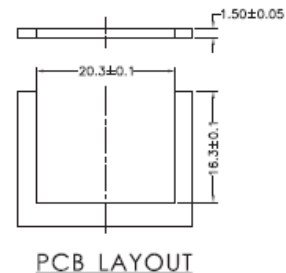
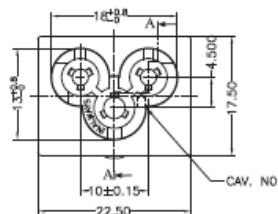
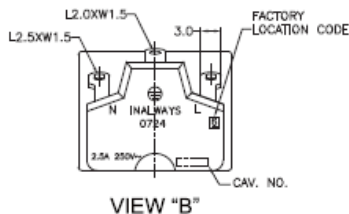
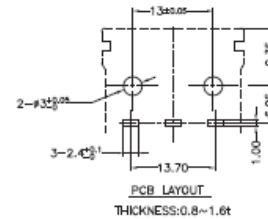
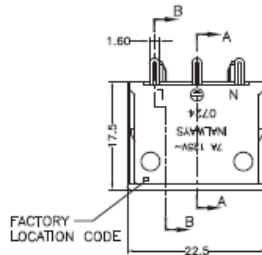
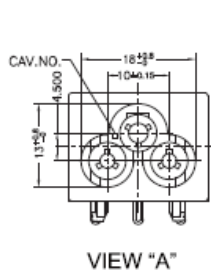


# 0724 Series



Specification	Inlet	
<b>Power Rating</b>	2.5A 250V AC Europe & UL & CSA 7A 250V AC CSA, 7A 125V AC UL	
<b>Electric Strength</b>	AC 2,000V for 1 Minute	
<b>Contact Resistance</b>	30MΩ Max.	
<b>Insulation Resistance</b>	100MΩ Min. at 500V DC	
<b>Operating Temperature</b>	+105°C	
<b>Materials</b>	Thermoplastic UL Flammability 94V-0 & Copper Alloy	
<b>Mounting</b>	P : Snap-In	
<b>Terminal</b>	P : PCB Pin S : Solder Tab	
<b>Dimension Option</b>	7 : View A 7M : View A+Metal Clip	9-C3 : View B

Unit : mm

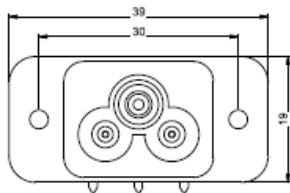


# 0724 Series

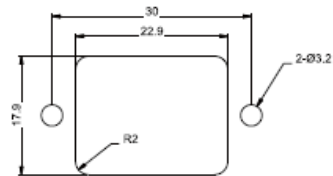
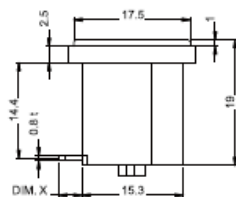
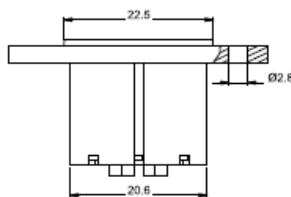


Specification	Inlet
<b>Power Rating</b>	2.5A 250V AC Europe & UL & CSA 7A 250V AC CSA, 7A 125V AC UL
<b>Electric Strength</b>	AC 2,000V for 1 Minute
<b>Contact Resistance</b>	30MΩ Max.
<b>Insulation Resistance</b>	100MΩ Min. at 500V DC
<b>Operating Temperature</b>	+70°C
<b>Materials</b>	Thermoplastic UL Flammability 94V-0 & Copper Alloy
<b>Mounting</b>	C : Upper Screw-On F : Side Screw-On
<b>Terminal</b>	P : PCB Pin RS : Solder Tab (2.54 x 0.8)

Unit : mm



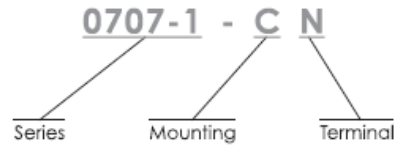
PCB LAYOUT



PANEL CUT-OUT

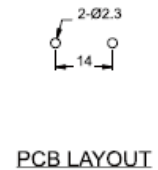
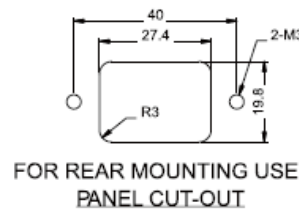
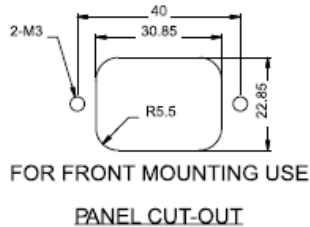
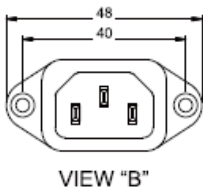
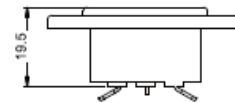
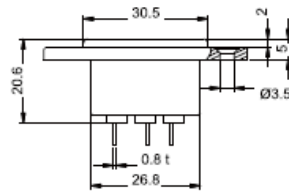
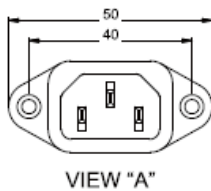


# 0707-1 Series



▶ Specification	▶ Inlet	
<b>Power Rating</b>	10A 250V AC Europe 15A 250V AC North America	
<b>Electric Strength</b>	AC 2,000V for 1 Minute	
<b>Contact Resistance</b>	30MΩ Max.	
<b>Insulation Resistance</b>	100MΩ Min. at 500V DC	
<b>Operating Temperature</b>	+100°C	
<b>Materials</b>	Thermoplastic UL Flammability 94V-0 & Copper Alloy	
<b>Mounting</b>	C : Side Screw-On	
<b>Terminal</b>	N : Solder Tab (4.0 x 0.8) Q : Solder Tab (4.8 x 0.8)	L2 : EMI Filter Application (View B) P : PCB Pin

Unit : mm

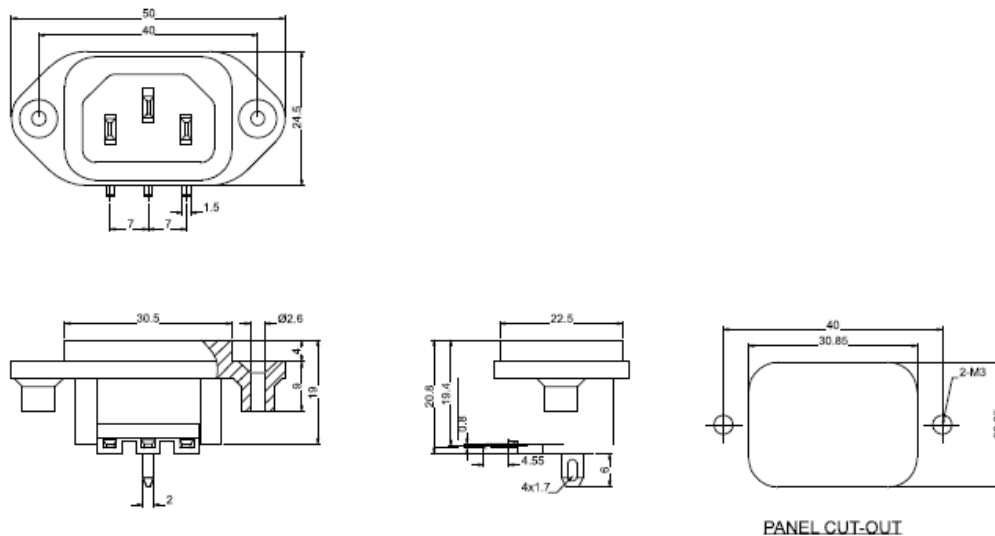


# 0707-1 Series



Specification	Inlet
<b>Power Rating</b>	10A 250V AC Europe 15A 250V AC North America
<b>Electric Strength</b>	AC 2,000V for 1 Minute
<b>Contact Resistance</b>	30MΩ Max.
<b>Insulation Resistance</b>	100MΩ Min. at 500V DC
<b>Operating Temperature</b>	+100°C
<b>Materials</b>	Thermoplastic UL Flammability 94V-0 & Copper Alloy
<b>Mounting</b>	C : Side Screw-On
<b>Terminal</b>	7C1 : PCB Pin

Unit : mm

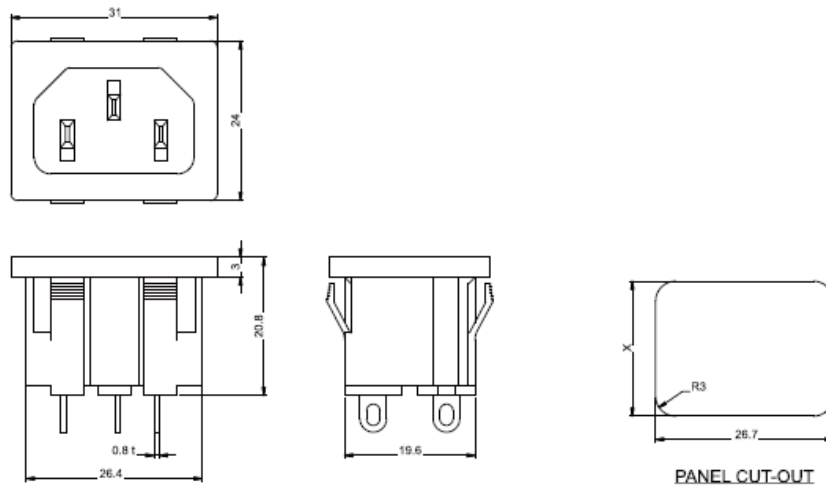


# 0711 Series

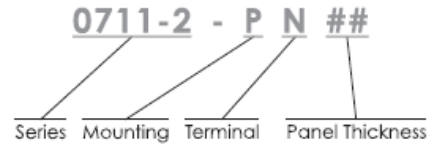


▶ Specification	▶ Inlet
<b>Power Rating</b>	10A 250V AC Europe 15A 250V AC North America
<b>Electric Strength</b>	AC 2,000V for 1 Minute
<b>Contact Resistance</b>	30MΩ Max.
<b>Insulation Resistance</b>	100MΩ Min. at 500V DC
<b>Operating Temperature</b>	+90°C
<b>Materials</b>	Thermoplastic UL Flammability 94V-0 & Copper Alloy
<b>Mounting</b>	P : Snap-In
<b>Terminal</b>	N : Solder Tab (4.0 x 0.8) Q : Solder Tab (4.8 x 0.8)

Unit : mm

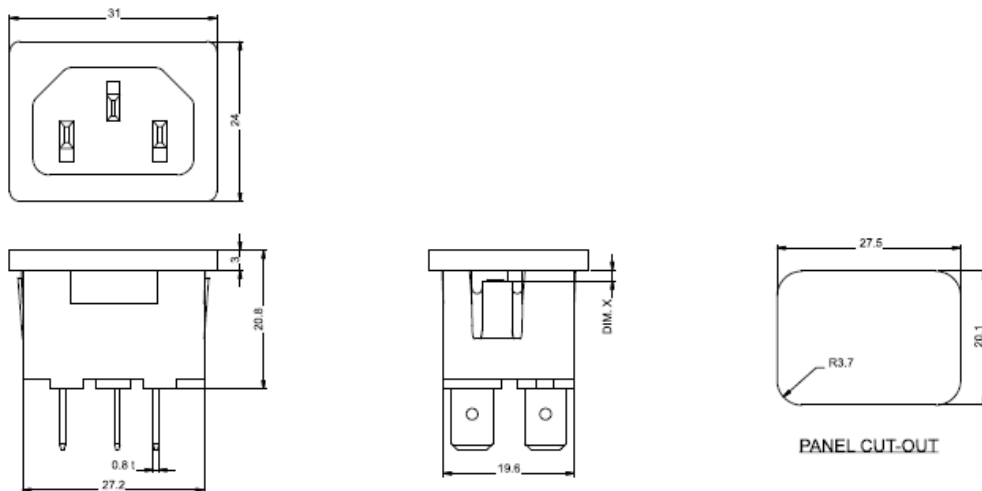


# 0711-2 Series



Specification	Inlet
<b>Power Rating</b>	10A 250V AC Europe 15A 250V AC North America
<b>Electric Strength</b>	AC 2,000V for 1 Minute
<b>Contact Resistance</b>	30MΩ Max.
<b>Insulation Resistance</b>	100MΩ Min. at 500V DC
<b>Operating Temperature</b>	+90°C
<b>Materials</b>	Thermoplastic UL Flammability 94V-0 & Copper Alloy
<b>Mounting</b>	P : Snap-In
<b>Terminal</b>	N : Solder Tab (4.0 x 0.8) Q : Solder Tab (4.8 x 0.8)
<b>Panel Thickness</b>	0.8 / 1.0 / 1.2 / 1.5

Unit : mm



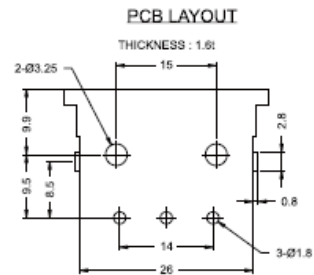
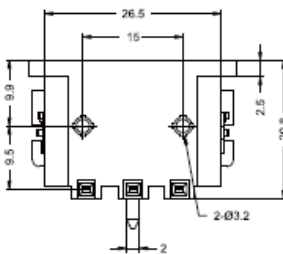
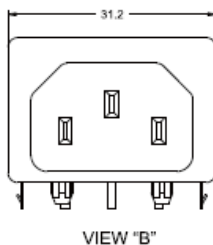
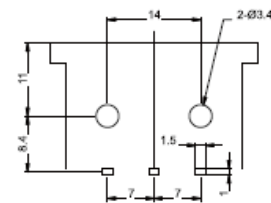
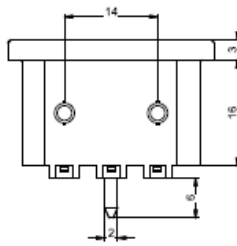
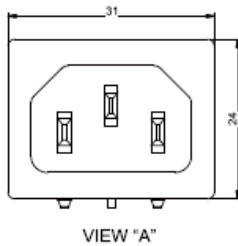


# 0711-2 Series



Specification	Inlet
<b>Power Rating</b>	10A 250V AC Europe 15A 250V AC North America
<b>Electric Strength</b>	AC 2,000V for 1 Minute
<b>Contact Resistance</b>	30MΩ Max.
<b>Insulation Resistance</b>	100MΩ Min. at 500V DC
<b>Operating Temperature</b>	+90°C
<b>Materials</b>	Thermoplastic UL Flammability 94V-0 & Copper Alloy
<b>Mounting</b>	P : Snap-In
<b>Terminal</b>	L : PCB Pin
<b>Dimension Option</b>	1/2/3 : View A 4M20 : View B

Unit : mm



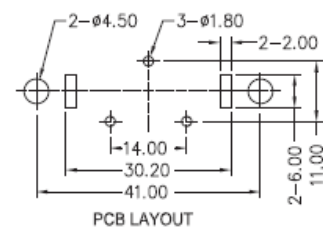
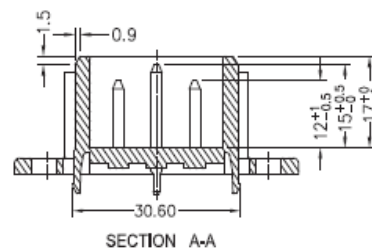
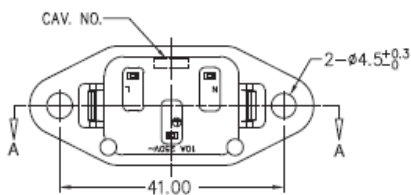
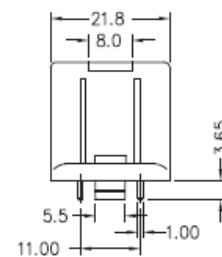
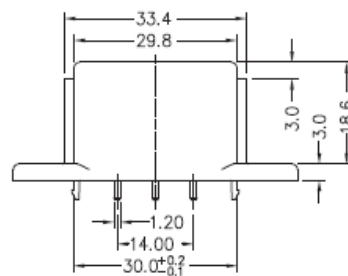
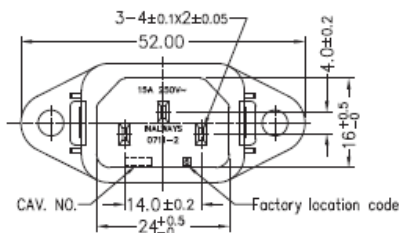
# 0711-2 Series



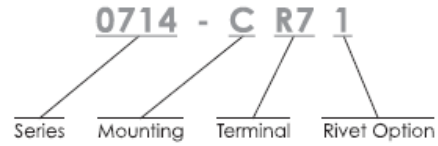
<b>▶ Specification</b>	<b>▶ Inlet</b>
------------------------	----------------

<b>Power Rating</b>	10A 250V AC Europe 15A 250V AC North America
<b>Electric Strength</b>	AC 2,000V for 1 Minute
<b>Contact Resistance</b>	30MΩ Max.
<b>Insulation Resistance</b>	100MΩ Min. at 500V DC
<b>Operating Temperature</b>	+90°C
<b>Materials</b>	Thermoplastic UL Flammability 94V-0 & Copper Alloy
<b>Mounting</b>	C : Screw-On
<b>Terminal</b>	PH : PCB Pin

Unit : mm

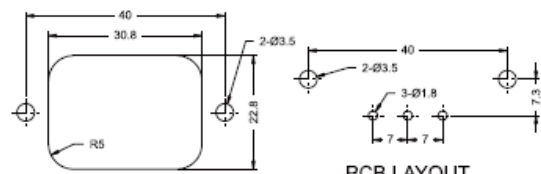
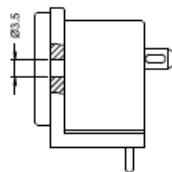
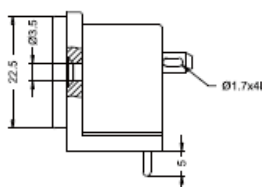
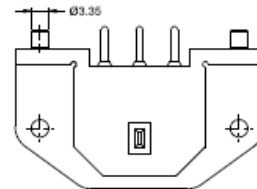
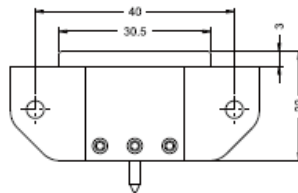
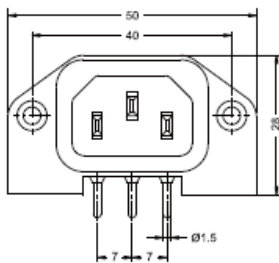


# 0714 Series



Specification	Inlet
<b>Power Rating</b>	10A 250V AC Europe 15A 250V AC North America
<b>Electric Strength</b>	AC 2,000V for 1 Minute
<b>Contact Resistance</b>	30MΩ Max.
<b>Insulation Resistance</b>	100MΩ Min. at 500V DC
<b>Operating Temperature</b>	+100°C
<b>Materials</b>	Thermoplastic UL Flammability 94V-0 & Copper Alloy
<b>Mounting</b>	C : Countersink Screw-On F : Flat Screw-On
<b>Terminal</b>	R7 : PCB Pin
<b>Rivet Option</b>	1 : With Rivet

Unit : mm



PANEL CUT-OUT

PCB LAYOUT

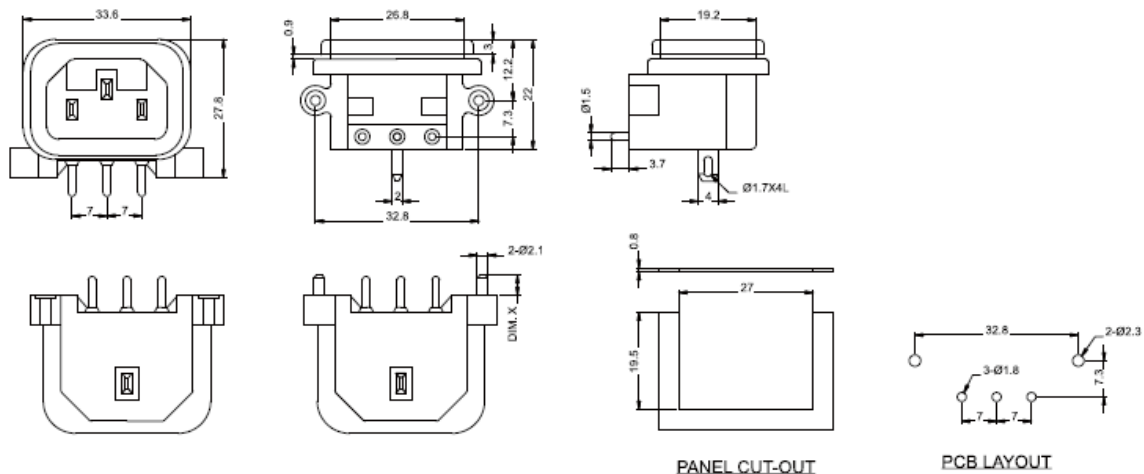


# 0714-P Series



► Specification	► Inlet
<b>Power Rating</b>	10A 250V AC Europe 15A 250V AC North America
<b>Electric Strength</b>	AC 2,000V for 1 Minute
<b>Contact Resistance</b>	30MΩ Max.
<b>Insulation Resistance</b>	100MΩ Min. at 500V DC
<b>Operating Temperature</b>	+70°C
<b>Materials</b>	Thermoplastic UL Flammability 94V-0 & Copper Alloy
<b>Mounting</b>	FR7 : PCB Pin
<b>Rivet Option</b>	1 : With Rivet

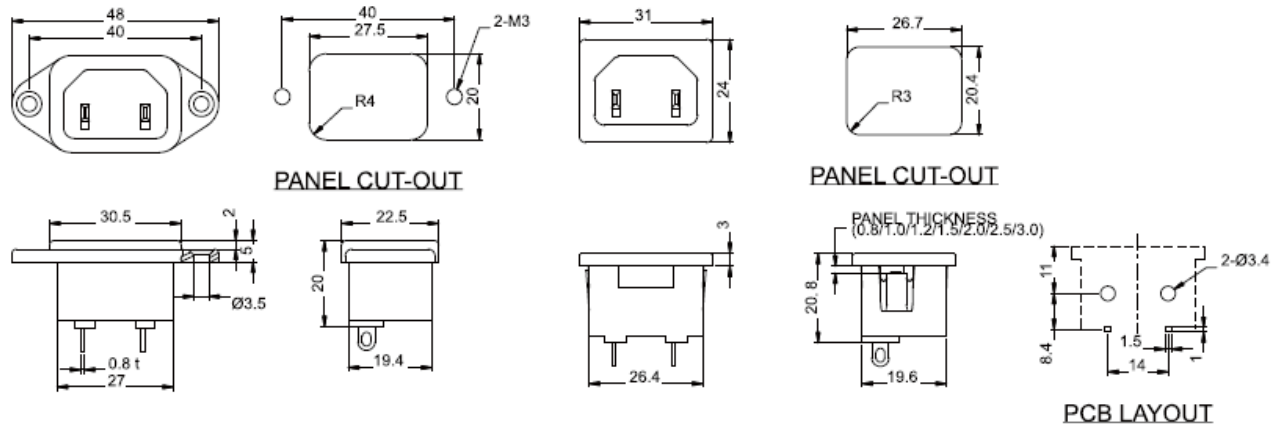
Unit : mm



# 0732 Series



Specification	Inlet
<b>Power Rating</b>	10A 250V AC Europe 15A 250V AC North America
<b>Electric Strength</b>	AC 2,000V for 1 Minute
<b>Contact Resistance</b>	30MΩ Max.
<b>Insulation Resistance</b>	100MΩ Min. at 500V DC
<b>Operating Temperature</b>	+70°C
<b>Materials</b>	Thermoplastic UL Flammability 94V-0 & Copper Alloy
<b>Mounting</b>	C : Countersink Screw-On      P : Push-In F : Flat Screw-On
<b>Terminal</b>	N : Solder Tab (4.8 x 0.8) P : PCB Pin
<b>Panel Thickness</b>	0.8 / 1.0 / 1.2 / 1.5 / 2.0 / 2.5 / 3.0

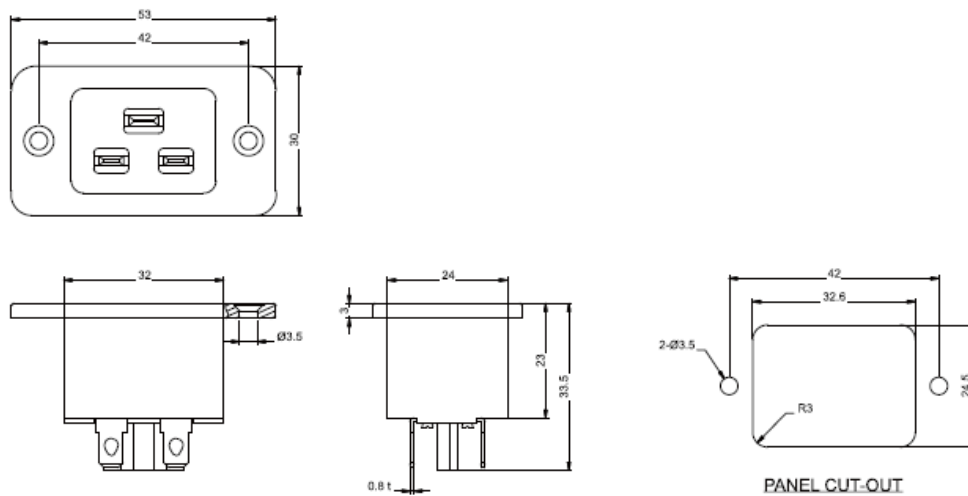


# 0722 Series

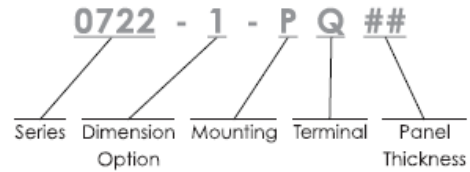


Specification	Inlet
<b>Power Rating</b>	16A 250V AC Europe 20A 250V AC North America
<b>Electric Strength</b>	AC 2,000V for 1 Minute
<b>Contact Resistance</b>	30MΩ Max.
<b>Insulation Resistance</b>	100MΩ Min. at 500V DC
<b>Operating Temperature</b>	+70°C
<b>Materials</b>	Thermoplastic UL Flammability 94V-0 & Copper Alloy
<b>Mounting</b>	C : Screw-On
<b>Terminal</b>	Q : Solder Tab (4.8 x 0.8) W1 : Solder Tab 6.3 x 0.8

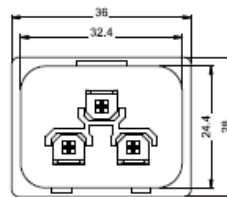
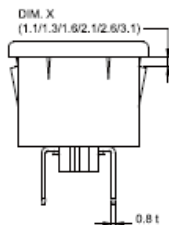
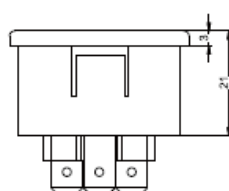
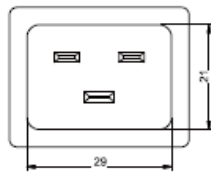
Unit : mm



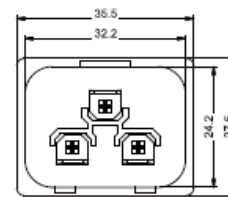
# 0722 Series



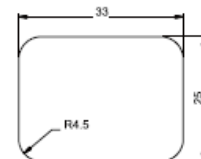
Specification	Inlet
<b>Power Rating</b>	16A 250V AC Europe 20A 250V AC North America
<b>Electric Strength</b>	AC 2,000V for 1 Minute
<b>Contact Resistance</b>	30MΩ Max.
<b>Insulation Resistance</b>	100MΩ Min. at 500V DC
<b>Operating Temperature</b>	+80°C
<b>Materials</b>	Thermoplastic UL Flammability 94V-0 & Copper Alloy
<b>Dimension Option</b>	1 : View A / C 3 : View B / D
<b>Mounting</b>	P : Push-In
<b>Terminal</b>	Q : Solder Tab (4.8 x 0.8) W : Solder Tab (6.3 x 0.8)
<b>Panel Thickness</b>	0.8 / 1.0 / 1.2 / 1.5 / 2.0 / 2.5 / 3.0



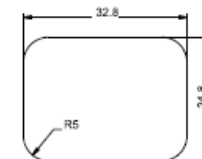
VIEW "A"



VIEW "B"



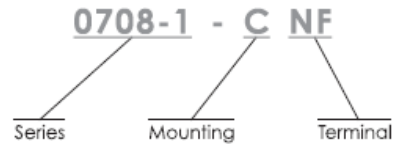
VIEW "C"



VIEW "D"

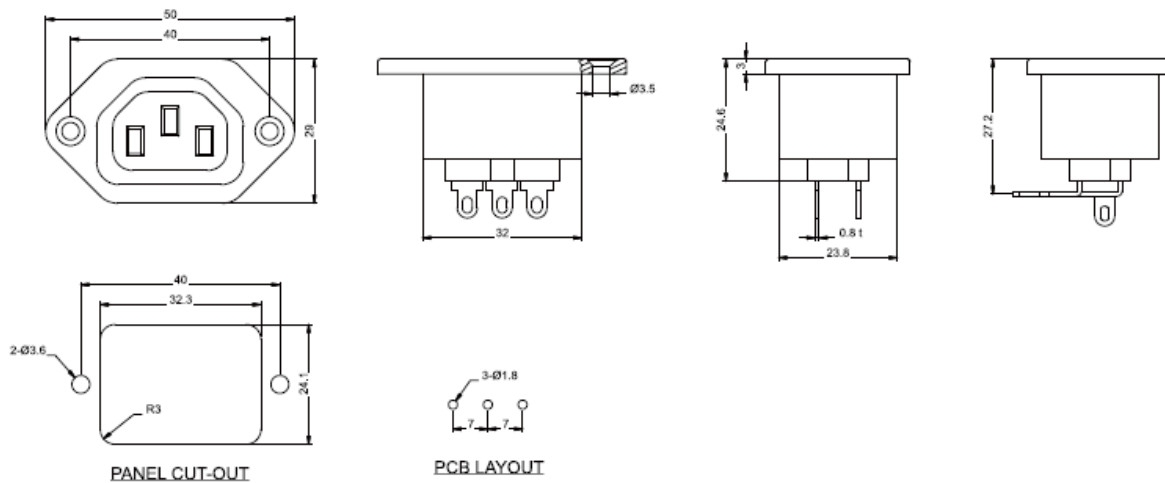


# 0708-1 Series



▶ Specification	▶ Outlet	
<b>Power Rating</b>	10A 250V AC	
<b>Electric Strength</b>	AC 2,000V for 1 Minute	
<b>Contact Resistance</b>	30MΩ Max.	
<b>Insulation Resistance</b>	100MΩ Min. at 500V DC	
<b>Operating Temperature</b>	+70°C	
<b>Materials</b>	Thermoplastic UL Flammability 94V-0 & Copper Alloy	
<b>Mounting</b>	C : Crew-On	
<b>Terminal</b>	NF : Solder Tab (4.0 x 0.8) QF : Solder Tab (4.8 x 0.8)	PF : PCB Pin

Unit : mm



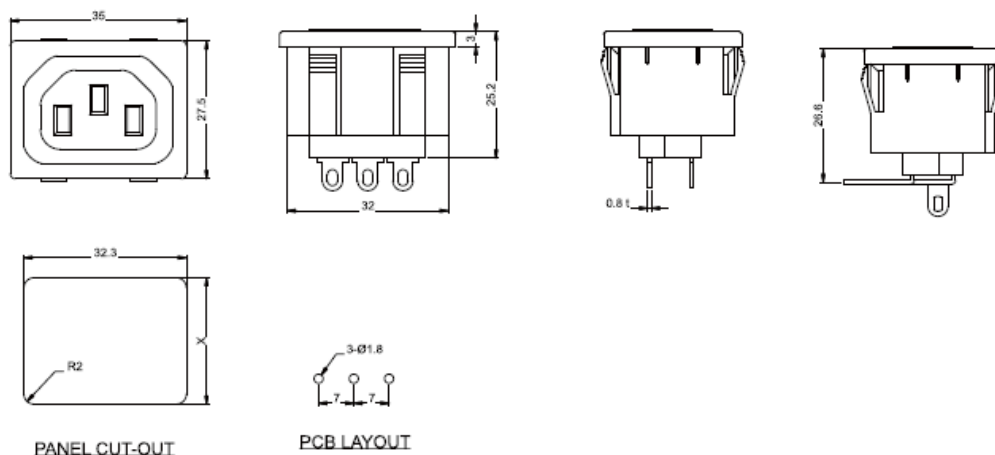


## 0718-1 Series



► Specification	► Outlet	
<b>Power Rating</b>	10A 250V AC	
<b>Electric Strength</b>	AC 2,000V for 1 Minute	
<b>Contact Resistance</b>	30MΩ Max.	
<b>Insulation Resistance</b>	100MΩ Min. at 500V DC	
<b>Operating Temperature</b>	+70°C	
<b>Materials</b>	Thermoplastic UL Flammability 94V-0 & Copper Alloy	
<b>Mounting</b>	P : Push-In	
<b>Terminal</b>	N : Solder Tab (4.0 x 0.8) Q : Solder Tab (4.8 x 0.8)	P : PCB Pin

Unit : mm

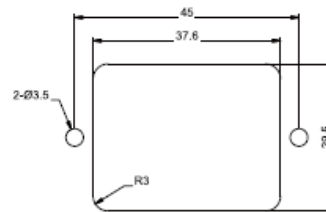
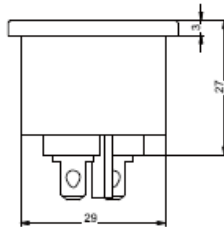
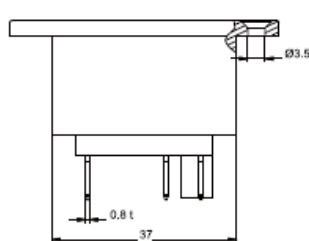
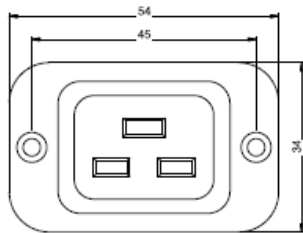


# 0723 Series



► Specification	► Outlet
<b>Power Rating</b>	16A 250V AC Europe 20A 250V AC North America
<b>Electric Strength</b>	AC 2,000V for 1 Minute
<b>Contact Resistance</b>	30MΩ Max.
<b>Insulation Resistance</b>	100MΩ Min. at 500V DC
<b>Operating Temperature</b>	+90°C
<b>Materials</b>	Thermoplastic UL Flammability 94V-0 & Copper Alloy
<b>Mounting</b>	C : Screw-On
<b>Terminal</b>	Q : Solder Tab (4.8 x 0.8) W : Solder Tab (6.3 x 0.8)

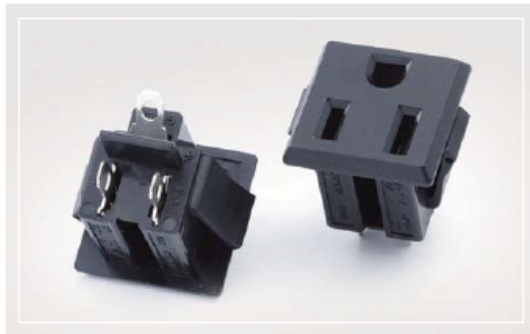
Unit : mm



PANEL CUT-OUT

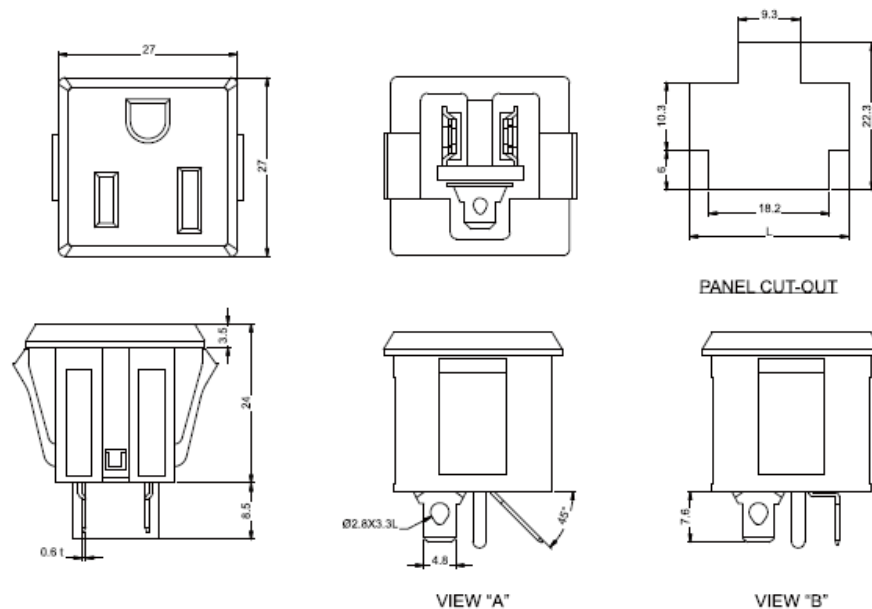


# 0709 Series

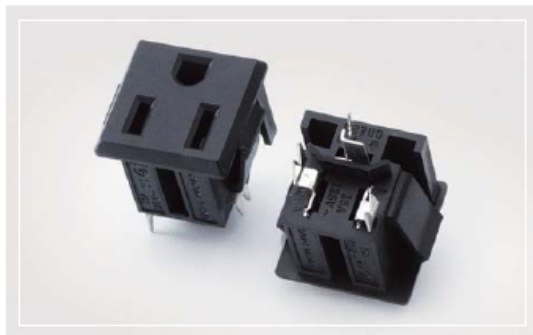


► Specification	► Outlet
<b>Power Rating</b>	15A 125V AC
<b>Electric Strength</b>	AC 2,000V for 1 Minute
<b>Contact Resistance</b>	30MΩ Max.
<b>Insulation Resistance</b>	100MΩ Min. at 500V DC
<b>Operating Temperature</b>	+60°C
<b>Materials</b>	Thermoplastic UL Flammability 94V-0 & Copper Alloy
<b>Mounting</b>	P : Push-In
<b>Terminal</b>	Q : Solder Tab (4.8 x 0.6) View A QA : Solder Tab (4.8 x 0.6) View B

Unit : mm

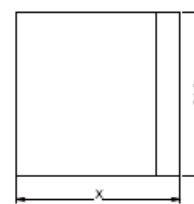
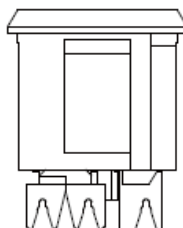
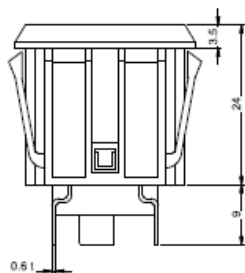
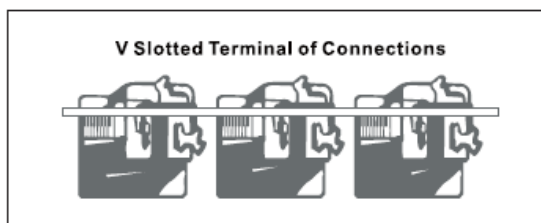
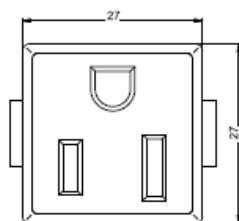


# 0709-1 Series



▶ Specification	▶ Outlet
<b>Power Rating</b>	15A 125V AC
<b>Electric Strength</b>	AC 2,000V for 1 Minute
<b>Contact Resistance</b>	30MΩ Max.
<b>Insulation Resistance</b>	100MΩ Min. at 500V DC
<b>Operating Temperature</b>	+65°C
<b>Materials</b>	Thermoplastic UL Flammability 94V-0 & Copper Alloy
<b>Mounting</b>	P : Push-In
<b>Terminal</b>	V : Slotted Terminal

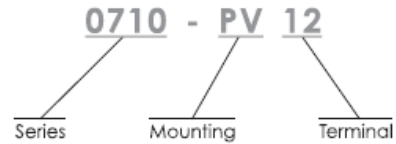
Unit : mm



PANEL CUT-OUT

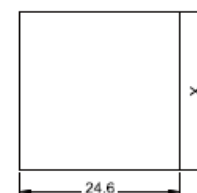
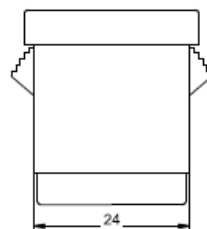
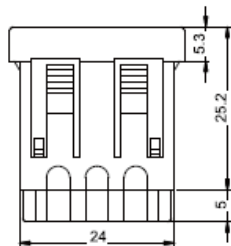
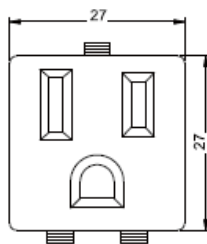


# 0710 Series



▶ Specification	▶ Outlet
<b>Power Rating</b>	15A 125V AC
<b>Electric Strength</b>	AC 2,000V for 1 Minute
<b>Contact Resistance</b>	30MΩ Max.
<b>Insulation Resistance</b>	100MΩ Min. at 500V DC
<b>Operating Temperature</b>	+65°C
<b>Materials</b>	Thermoplastic UL Flammability 94V-0 & Copper Alloy
<b>Mounting</b>	PV : Snap-In
<b>Terminal</b>	12 : AWG12~14 Wire Application

Unit : mm



V: SERRATED CLIP

PANEL CUT-OUT

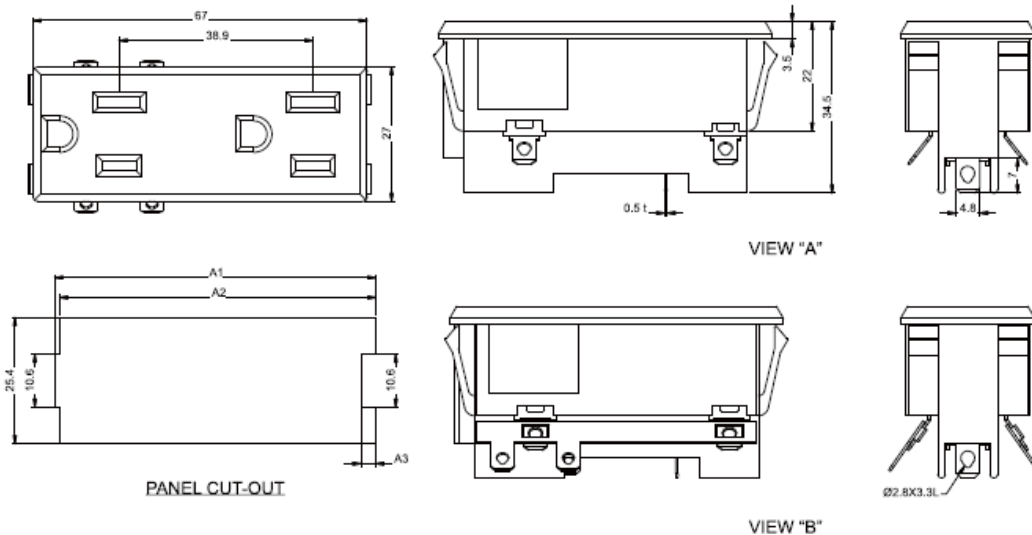


# 0719 Series



Specification	Outlet
<b>Power Rating</b>	15A 125V AC
<b>Electric Strength</b>	AC 2,000V for 1 Minute
<b>Contact Resistance</b>	30MΩ Max.
<b>Insulation Resistance</b>	100MΩ Min. at 500V DC
<b>Operating Temperature</b>	+115°C
<b>Materials</b>	Thermoplastic UL Flammability 94V-0 & Copper Alloy
<b>Mounting</b>	P : Snap-In
<b>Terminal</b>	Q : Solder Tab (4.8 x 0.5) View A QG : Solder Tab (4.8 x 0.5) View B

Unit : mm

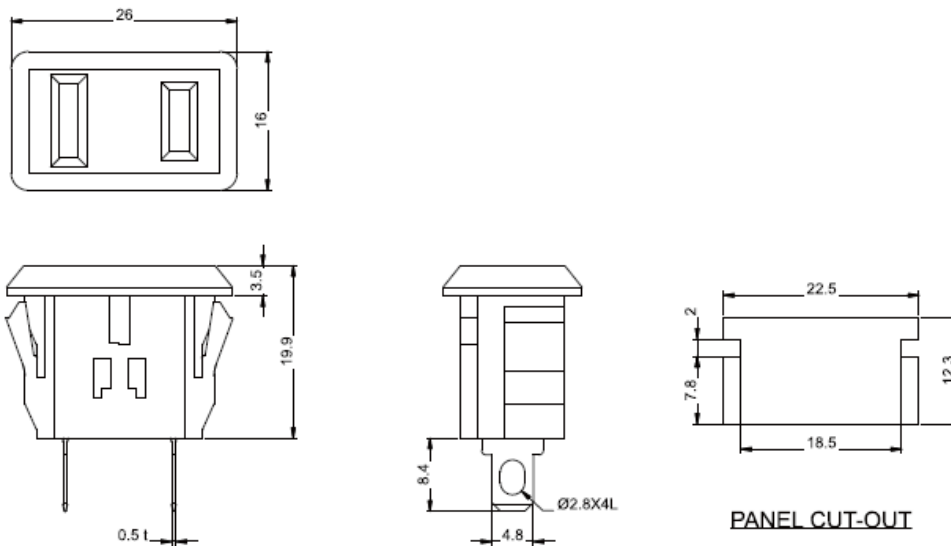


# 0715 Series

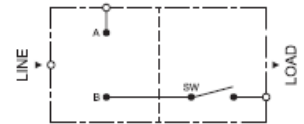
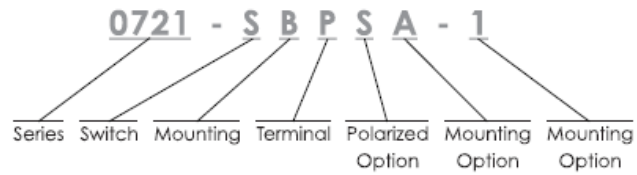


▶ Specification	▶ Outlet
<b>Power Rating</b>	15A 125V AC
<b>Electric Strength</b>	AC 2,000V for 1 Minute
<b>Contact Resistance</b>	30MΩ Max.
<b>Insulation Resistance</b>	100MΩ Min. at 500V DC
<b>Operating Temperature</b>	+60°C
<b>Materials</b>	Thermoplastic UL Flammability 94V-0 & Copper Alloy
<b>Mounting</b>	P : Snap-In
<b>Terminal</b>	Q : Solder Tab (4.8 x 0.5)

Unit : mm

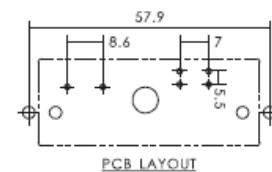
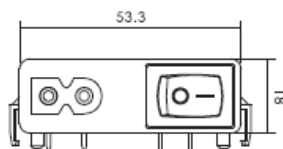
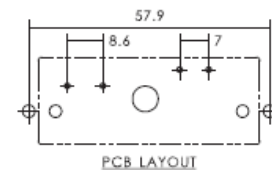
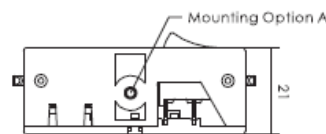
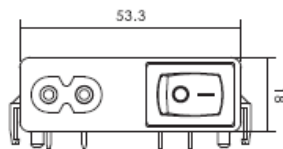


# 0721-SBP Series



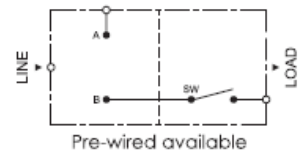
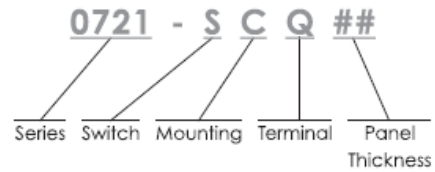
► Specification	► Inlet	► Rocker Switch
<b>Power Rating</b>	2.5A 250V AC Europe 7A 125V AC North America	3 A 250V AC Europe 6 A 125V AC North America
<b>Electric Strength</b>	AC 2,000V for 1 Minute	AC 1,000V for 1 Minute
<b>Contact Resistance</b>	30MΩ Max.	20MΩ Max.
<b>Insulation Resistance</b>	100MΩ Min. at 500V DC	100MΩ Min. at 500V DC
<b>Operating Temperature</b>	+80°C	+ 85°C (Europe) + 125°C (North America)
<b>Materials</b>	Thermoplastic UL Flammability 94V-0 & Copper Alloy	Thermoplastic UL Flammability 94V-0 & Copper Alloy
<b>Terminal</b>	P : PCB Pin	PCB Pin
<b>Polarized Option</b>	P : non-polarized S : polarized	
<b>Mounting Option</b>	A : From above    B : From below Panel Thickness : 1.6	1 : Single Pole (On / Off Switch) 2 : Double Pole (On / Off Switch)

Unit : mm



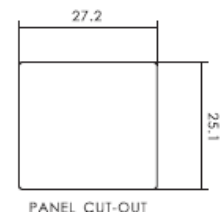
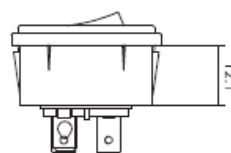
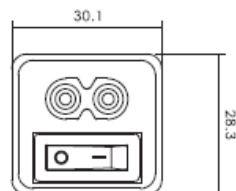
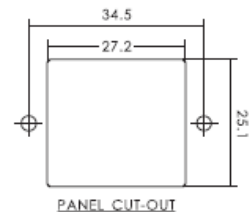
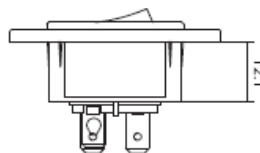
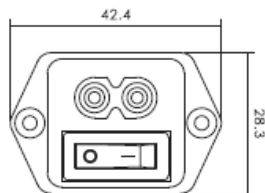


# 0721-S Series

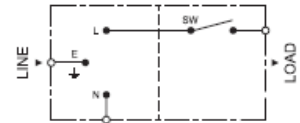
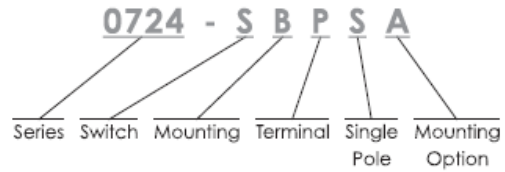


Specification	Inlet	Rocker Switch
<b>Power Rating</b>	2.5A 250V AC Europe 7A 125V AC North America	10A 250V AC
<b>Electric Strength</b>	AC 2,000V for 1 Minute	AC 1,500V for 1 Minute
<b>Contact Resistance</b>	30MΩ Max.	20MΩ Max.
<b>Insulation Resistance</b>	100MΩ Min. at 500V DC	100MΩ Min. at 500V DC
<b>Operating Temperature</b>	+80°C	+ 100°C
<b>Materials</b>	Thermoplastic UL Flammability 94V-0 & Copper Alloy	Thermoplastic UL Flammability 94V-0, 94V-2 & Copper Alloy
<b>Mounting</b>	C : Screw-on P : Snap-in	Single Pole (On / Off Switch)
<b>Terminal</b>	Q : Q.D / Solder Tab, 4.8 X 0.8 S : Solder Tab, 3.5 X 0.8 P : PCB Pin	Q.D Tab, 4.8 X 0.8 Solder Tab, 3.5 X 0.8
<b>Panel Thickness</b>	Snap-in Panel Thickness : 0.8 / 1.0 / 1.2	

Unit : mm

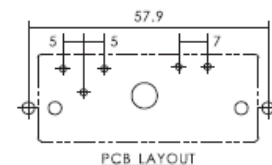
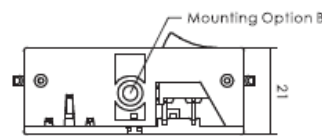
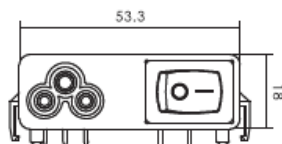
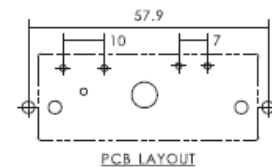
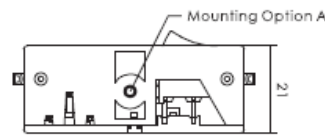
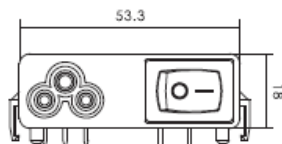


# 0724-SBP Series

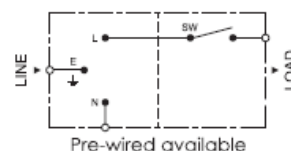
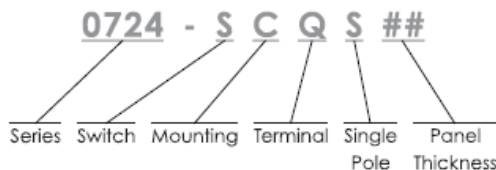


► Specification	► Inlet	► Rocker Switch
<b>Power Rating</b>	2.5A 250V AC Europe 7A 125V AC North America	3A 250V AC Europe 6A 125V AC North America
<b>Electric Strength</b>	AC 2,000V for 1 Minute	AC 1,000V for 1 Minute
<b>Contact Resistance</b>	30MΩ Max.	20MΩ Max.
<b>Insulation Resistance</b>	100MΩ Min. at 500V DC	100MΩ Min. at 500V DC
<b>Operating Temperature</b>	+80°C	+ 85°C (Europe) + 125°C (North America)
<b>Materials</b>	Thermoplastic UL Flammability 94V-0 & Copper Alloy	Thermoplastic UL Flammability 94V-0 & Copper Alloy
<b>Terminal</b>	P : PCB Pin	PCB Pin
<b>Mounting Option</b>	A : From above    B : From below Panel Thickness : 1.6	Single Pole (On / Off Switch)

Unit : mm

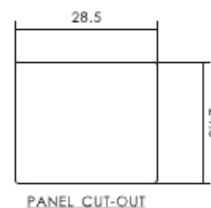
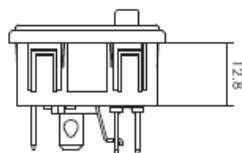
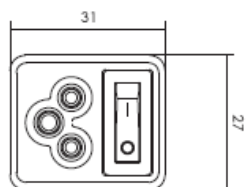
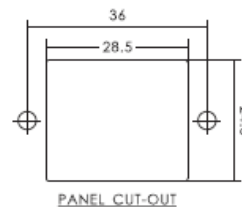
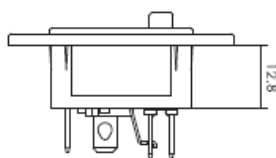
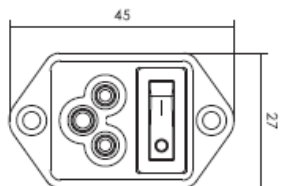


# 0724-S Series

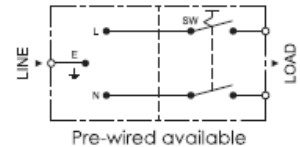
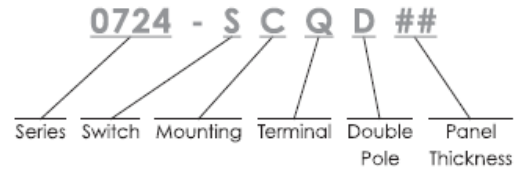


Specification	Inlet	Rocker Switch
<b>Power Rating</b>	2.5A 250V AC Europe 7A 125V AC North America	10A 250V AC
<b>Electric Strength</b>	AC 2,000V for 1 Minute	AC 1,500V for 1 Minute
<b>Contact Resistance</b>	30MΩ Max.	20MΩ Max.
<b>Insulation Resistance</b>	100MΩ Min. at 500V DC	100MΩ Min. at 500V DC
<b>Operating Temperature</b>	+80°C	+ 100°C
<b>Materials</b>	Thermoplastic UL Flammability 94V-0 & Copper Alloy	Thermoplastic UL Flammability 94V-2 & Copper Alloy
<b>Mounting</b>	C : Screw-on P : Snap-in	Single Pole (On / Off Switch)
<b>Terminal</b>	Q : Q.D / Solder Tab, 4.8 X 0.8 S : Solder Tab, 3.5 X 0.8	Q.D Tab, 4.8 X 0.8 Solder Tab, 3.5 X 0.8
<b>Panel Thickness</b>	Snap-in Panel Thickness : 0.8 / 1.0 / 1.2	

Unit : mm

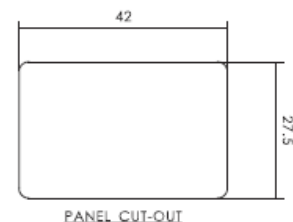
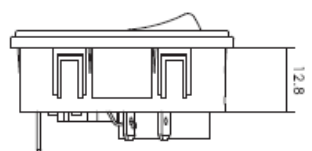
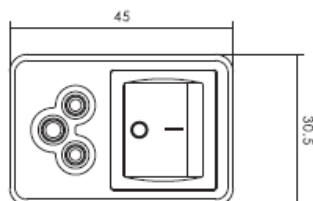
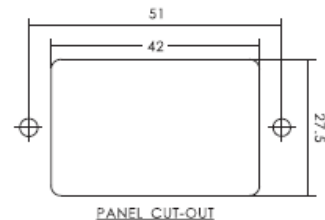
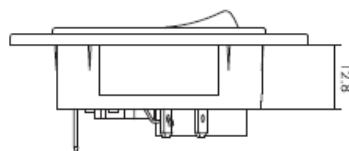
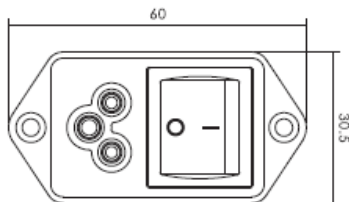


# 0724-S Series

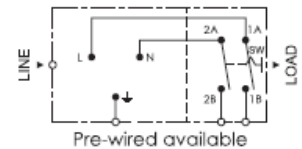
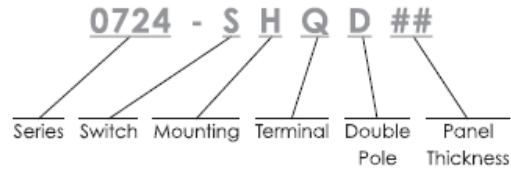


Specification	Inlet	Rocker Switch
<b>Power Rating</b>	2.5A 250V AC Europe 7A 125V AC North America	10A 250V AC
<b>Electric Strength</b>	AC 2,000V for 1 Minute	AC 1,500V for 1 Minute
<b>Contact Resistance</b>	30MΩ Max.	20MΩ Max.
<b>Insulation Resistance</b>	100MΩ Min. at 500V DC	100MΩ Min. at 500V DC
<b>Operating Temperature</b>	+80°C	+ 65°C (North America) + 90°C (Europe)
<b>Materials</b>	Thermoplastic UL Flammability 94V-0 & Copper Alloy	Thermoplastic UL Flammability 94V-2 & Copper Alloy
<b>Mounting</b>	C : Screw-on P : Snap-in	Double Pole (On / Off Switch)
<b>Terminal</b>	Q : Q.D / Solder Tab, 4.8 X 0.8 S : Solder Tab, 3.5 X 0.8	Q.D Tab, 4.8 X 0.8 Solder Tab, 3.5 X 0.8
<b>Panel Thickness</b>	Snap-in Panel Thickness : 1.0 / 1.2 / 1.5	

Unit : mm

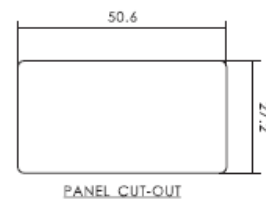
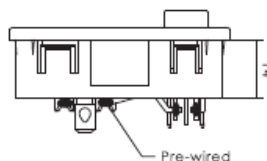
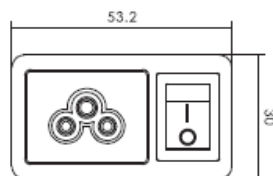
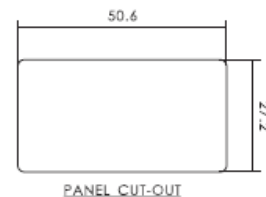
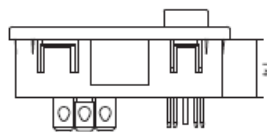
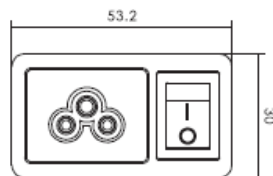


# 0724-S Series

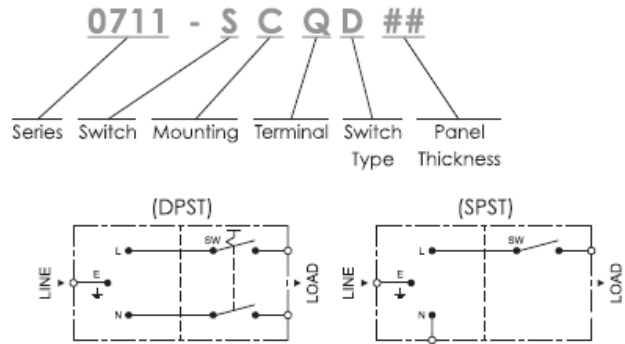


Specification	Inlet	Rocker Switch
<b>Power Rating</b>	2.5A 250V AC Europe 7A 125V AC North America	6A 250V AC Europe 12A 125V AC North America
<b>Electric Strength</b>	AC 2,000V for 1 Minute	AC 1,500V for 1 Minute
<b>Contact Resistance</b>	30MΩ Max.	20MΩ Max.
<b>Insulation Resistance</b>	100MΩ Min. at 500V DC	100MΩ Min. at 500V DC
<b>Operating Temperature</b>	+80°C	+ 85°C (Europe) + 125°C (North America)
<b>Materials</b>	Thermoplastic UL Flammability 94V-0 & Copper Alloy	Thermoplastic UL Flammability 94V-0 & Copper Alloy
<b>Mounting</b>	H : Horizontal Snap-in	Double Pole (On / Off Switch)
<b>Terminal</b>	Q : Q.D / Solder Tab, 4.8 X 0.8 V : Pre-wire Tab	Solder Tab, 4.7 X 0.8
<b>Panel Thickness</b>	Snap-in Panel Thickness : 1.0 / 1.2 / 1.5	

Unit : mm

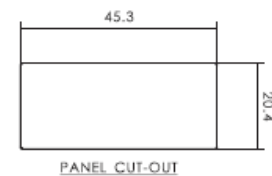
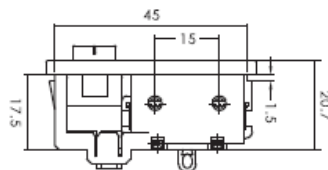
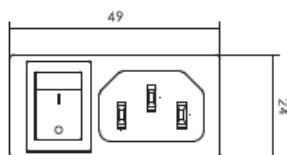
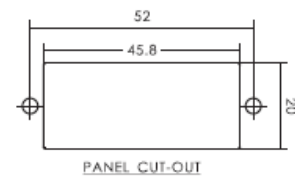
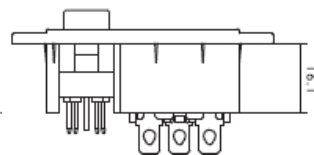
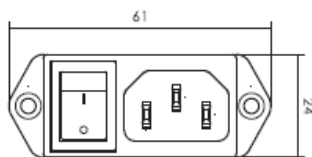


# 0711-S Series

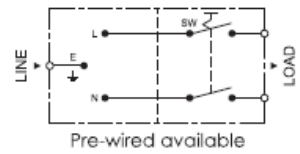
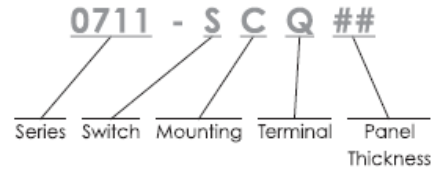


Specification	Inlet	Rocker Switch
<b>Power Rating</b>	10A 250V AC Europe 15A 250V AC North America	6A 250V AC Europe 12A 125V AC North America
<b>Electric Strength</b>	AC 2,000V for 1 Minute	AC 1,500V for 1 Minute
<b>Contact Resistance</b>	30MΩ Max.	20MΩ Max.
<b>Insulation Resistance</b>	100MΩ Min. at 500V DC	100MΩ Min. at 500V DC
<b>Operating Temperature</b>	+80°C	+ 85°C (Europe) + 125°C (North America)
<b>Materials</b>	Thermoplastic UL Flammability 94V-0 & Copper Alloy	Thermoplastic UL Flammability 94V-0 & Copper Alloy
<b>Mounting</b>	C : Screw-on P : Snap-in	Double Pole (On / Off Switch) Single Pole (On / Off Switch)
<b>Terminal</b>	Q : Q.D / Solder Tab, 4.8 X 0.8 S : Solder Tab, 3.5 X 0.8 P : PCB Pin	Solder Tab, 4.7 X 0.8
<b>Panel Thickness</b>	Snap-in Panel Thickness : 1.0 / 1.2 / 1.5	

Unit : mm

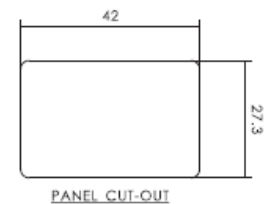
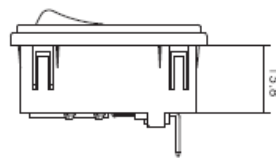
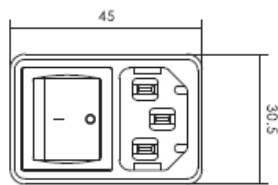
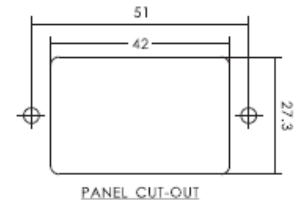
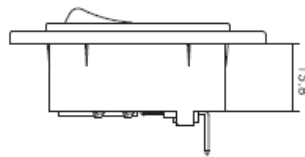
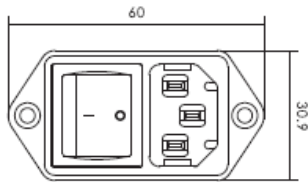


# 0711-S Series

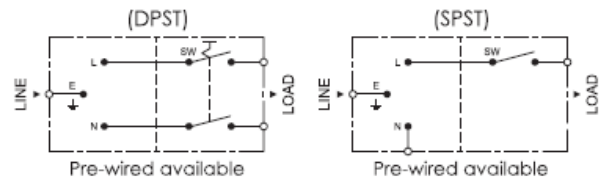
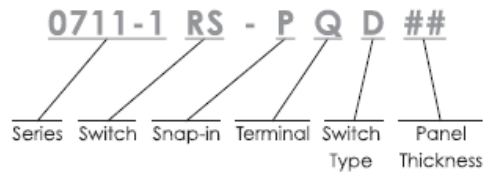


Specification	Inlet	Rocker Switch
<b>Power Rating</b>	10A 250V AC Europe 15A 250V AC North America	10A 250V AC
<b>Electric Strength</b>	AC 2,000V for 1 Minute	AC 1,500V for 1 Minute
<b>Contact Resistance</b>	30MΩ Max.	20MΩ Max.
<b>Insulation Resistance</b>	100MΩ Min. at 500V DC	100MΩ Min. at 500V DC
<b>Operating Temperature</b>	+80°C	+ 65°C (North America) + 90°C (Europe)
<b>Materials</b>	Thermoplastic UL Flammability 94V-0 & Copper Alloy	Thermoplastic UL Flammability 94V-2 & Copper Alloy
<b>Mounting</b>	C : Screw-on P : Snap-in	Double Pole (On / Off Switch)
<b>Terminal</b>	Q : Q.D / Solder Tab, 4.8 X 0.8 S : Solder Tab, 3.5 X 0.8	Q.D Tab, 4.8 X 0.8 Solder Tab, 3.5 X 0.8
<b>Panel Thickness</b>	Snap-in Panel Thickness : 1.0 / 1.2 / 1.5	

Unit : mm

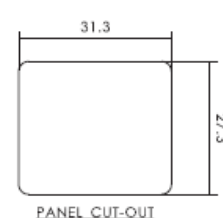
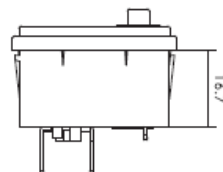
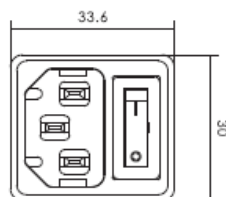
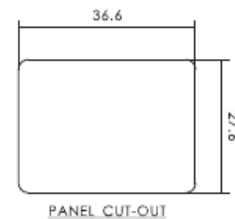
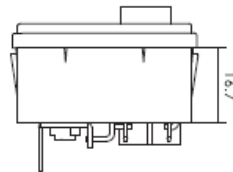
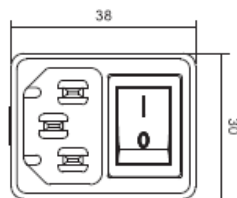


# 0711-1RS Series



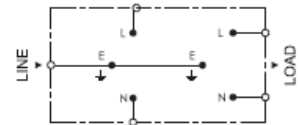
► Specification	► Inlet	► Rocker Switch
<b>Power Rating</b>	10A 250V AC	10A 250V AC
<b>Electric Strength</b>	AC 2,000V for 1 Minute	AC 1,500V for 1 Minute
<b>Contact Resistance</b>	30MΩ Max.	20MΩ Max.
<b>Insulation Resistance</b>	100MΩ Min. at 500V DC	100MΩ Min. at 500V DC
<b>Operating Temperature</b>	+90°C	+ 100°C (SPST) + 105°C (DPST)
<b>Materials</b>	Thermoplastic UL Flammability 94V-0 & Copper Alloy	Thermoplastic UL Flammability 94V-2 & Copper Alloy
<b>Terminal</b>	Q : Q.D / Solder Tab, 4.8 X 0.8 S : Solder Tab, 2.5 X 0.8	Q.D / Solder Tab, 4.8 X 0.8 Solder Tab, 3.5 X 0.8
<b>Panel Thickness</b>	Snap-in Panel Thickness : 0.8 / 1.0 / 1.2 / 1.5	Single Pole (On / Off Switch) Double Pole (On /Off Switch )

Unit : mm



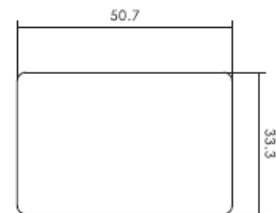
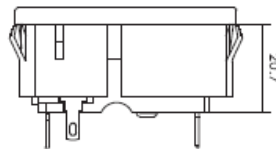
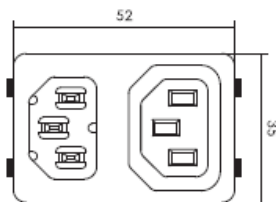


# 0712-P Series



Specification	Inlet	Outlet
<b>Power Rating</b>	10A 250V AC Europe 15A 125V AC North America	10A 250V AC
<b>Electric Strength</b>	AC 2,000V for 1 Minute	AC 2,000V for 1 Minute
<b>Contact Resistance</b>	30MΩ Max.	30MΩ Max.
<b>Insulation Resistance</b>	100MΩ Min. at 500V DC	100MΩ Min. at 500V DC
<b>Operating Temperature</b>	+70°C	- 25°C to + 70°C
<b>Materials</b>	Thermoplastic UL Flammability 94V-0 & Copper Alloy	Thermoplastic UL Flammability 94V-0 & Copper Alloy
<b>Mounting</b>	Snap-in, Panel Thickness : 0.8 ~ 2.0	
<b>Terminal</b>	L : Solder Tab, 2.8 X 0.8 Q : Q.D / Solder Tab, 4.8 X 0.8	

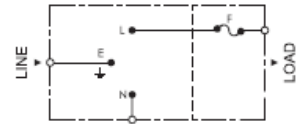
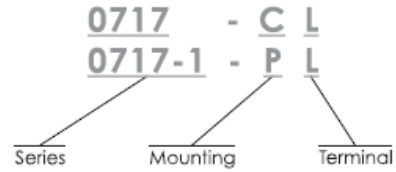
Unit : mm



PANEL CUT-OUT

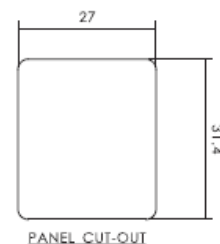
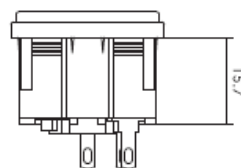
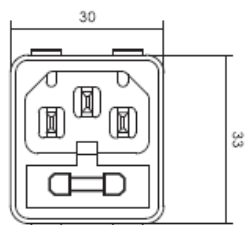
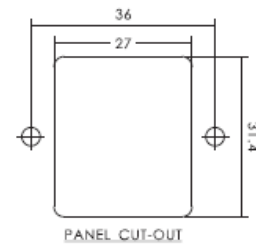
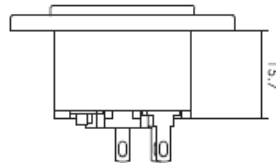
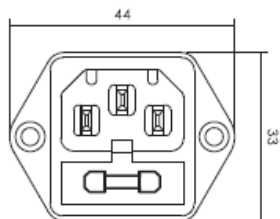


# 0717 / 0717-1 Series

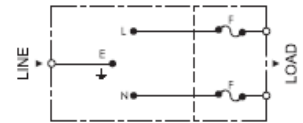
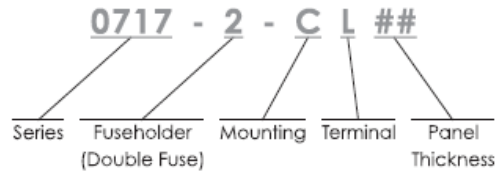


► Specification	► Inlet
<b>Power Rating</b>	10A 250V AC
<b>Electric Strength</b>	AC 2,000V for 1 Minute
<b>Contact Resistance</b>	30MΩ Max.
<b>Insulation Resistance</b>	100MΩ Min. at 500V DC
<b>Operating Temperature</b>	+90°C
<b>Materials</b>	Thermoplastic UL Flammability 94V-0 & Copper Alloy
<b>Mounting</b>	C : Screw-on P : Snap-in
<b>Terminal</b>	L : Solder Tab, 2.8 X 0.8 Q : Q.D / Solder Tab, 4.8 X 0.8 S : Solder Tab, 2.5 X 0.8 W : Q.D Tab, 6.3 X 0.8
<b>Panel Thickness</b>	Snap-in Panel Thickness : 0.8 ~ 2.0

Unit : mm

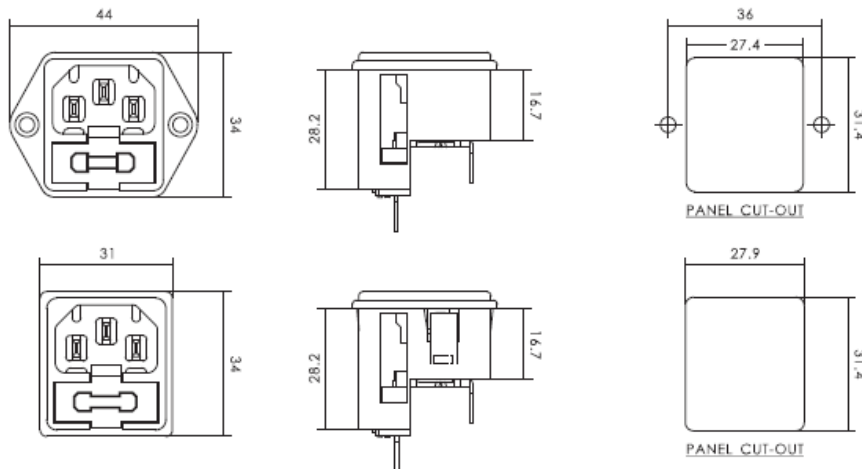


# 0717-2 Series

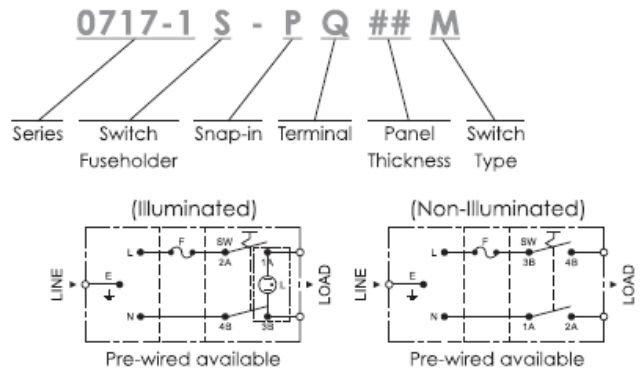


Specification	Inlet
<b>Power Rating</b>	10A 250V AC
<b>Electric Strength</b>	AC 2,000V for 1 Minute
<b>Contact Resistance</b>	30MΩ Max.
<b>Insulation Resistance</b>	100MΩ Min. at 500V DC
<b>Operating Temperature</b>	+80°C
<b>Materials</b>	Thermoplastic UL Flammability 94V-0 & Copper Alloy
<b>Mounting</b>	C : Screw-on P : Snap-in
<b>Terminal</b>	L : Solder Tab, 2.8 X 0.8      S : Solder Tab, 2.5 X 0.8 Q : Q.D / Solder Tab, 4.8 X 0.8      W : Q.D Tab, 6.3 X 0.8
<b>Panel Thickness</b>	Snap-in Panel Thickness : 0.8 / 1.0 / 1.2 / 1.5

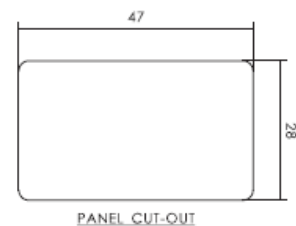
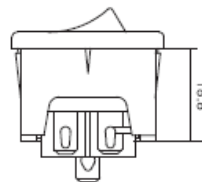
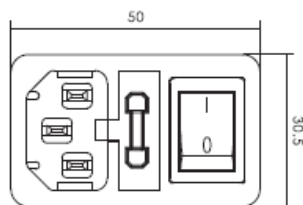
Unit : mm



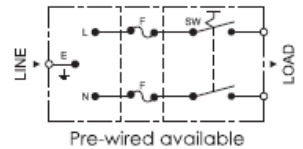
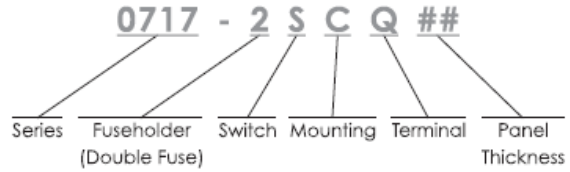
# 0717-1S Series



► Specification	► Inlet	► Rocker Switch
<b>Power Rating</b>	10A 250V AC	10A 250V AC
<b>Electric Strength</b>	AC 2,000V for 1 Minute	AC 1,500V for 1 Minute
<b>Contact Resistance</b>	30MΩ Max.	20MΩ Max.
<b>Insulation Resistance</b>	100MΩ Min. at 500V DC	100MΩ Min. at 500V DC
<b>Operating Temperature</b>	+90°C	+ 105°C
<b>Materials</b>	Thermoplastic UL Flammability 94V-0 & Copper Alloy	Thermoplastic UL Flammability 94V-2 & Copper Alloy
<b>Terminal</b>	Q : Q.D / Solder Tab, 4.8 X 0.8 S : Solder Tab, 3.5 X 0.8	Q.D Tab, 4.8 X 0.8 Solder Tab, 3.5 X 0.8
<b>Panel Thickness</b>	Snap-in Panel Thickness : 0.8 / 1.0 / 1.2 / 1.4	M : Illuminated N : Non-Illuminated
		Unit : mm

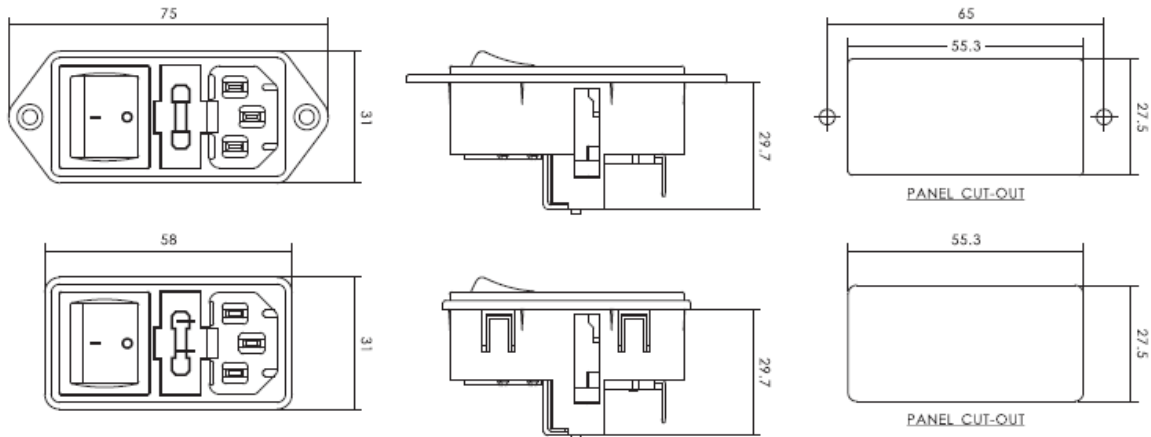


# 0717-2S Series

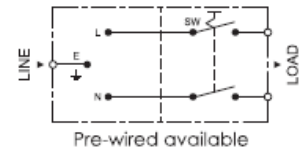
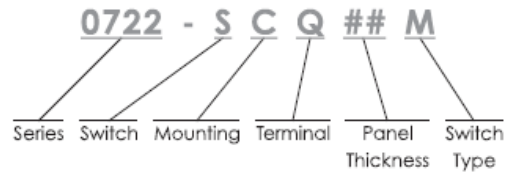


Specification	Inlet	Rocker Switch
<b>Power Rating</b>	10A 250V AC	10A 250V AC
<b>Electric Strength</b>	AC 2,000V for 1 Minute	AC 1,500V for 1 Minute
<b>Contact Resistance</b>	30MΩ Max.	20MΩ Max.
<b>Insulation Resistance</b>	100MΩ Min. at 500V DC	100MΩ Min. at 500V DC
<b>Operating Temperature</b>	+90°C	+ 65°C (North America) + 90°C (Europe)
<b>Materials</b>	Thermoplastic UL Flammability 94V-0 & Copper Alloy	Thermoplastic UL Flammability 94V-2 & Copper Alloy
<b>Mounting</b>	C : Screw-on P : Snap-in	Double Pole (On / Off Switch)
<b>Terminal</b>	Q : Q.D / Solder Tab, 4.8 X 0.8 S : Solder Tab, 3.5 X 0.8	Q.D Tab, 4.8 X 0.8 Solder Tab, 3.5 X 0.8
<b>Panel Thickness</b>	Snap-in Panel Thickness : 1.0 / 1.2 / 1.5	

Unit : mm

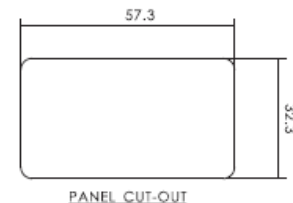
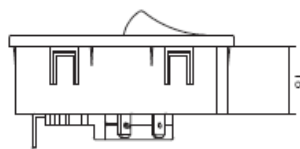
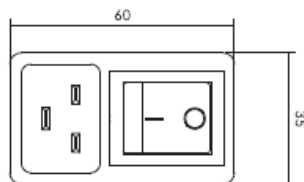
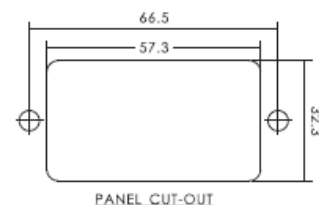
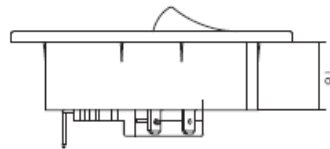
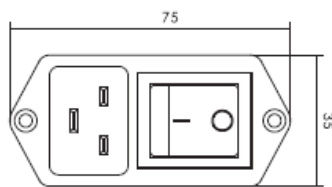


# 0722-S Series

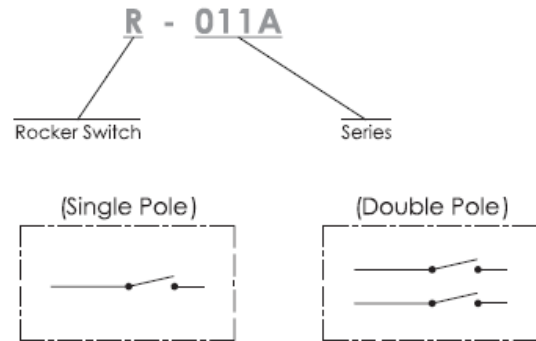


Specification	Inlet	Rocker Switch
<b>Power Rating</b>	16A 250V AC Europe 20A 250V AC North America	10A 250V AC
<b>Electric Strength</b>	AC 2,000V for 1 Minute	AC 1,500V for 1 Minute
<b>Contact Resistance</b>	30MΩ Max.	20MΩ Max.
<b>Insulation Resistance</b>	100MΩ Min. at 500V DC	100MΩ Min. at 500V DC
<b>Operating Temperature</b>	+80°C	+ 125°C
<b>Materials</b>	Thermoplastic UL Flammability 94V-0 & Copper Alloy	Thermoplastic UL Flammability 94V-2 & Copper Alloy
<b>Mounting</b>	C : Screw-on P : Snap-in	Double Pole (On / Off Switch)
<b>Terminal</b>	Q : Q.D / Solder Tab, 4.8 X 0.8 S : Solder Tab, 3.5 X 0.8 W : Q.D Tab, 6.3 X 0.8 P : PCB Pin	Q.D Tab, 4.8 X 0.8 Solder Tab, 3.5 X 0.8 Q.D Tab, 6.3 X 0.8
<b>Panel Thickness</b>	Snap-in Panel Thickness : 1.0 / 1.2 / 1.5	<b>Switch Type</b> M : Illuminated

Unit : mm

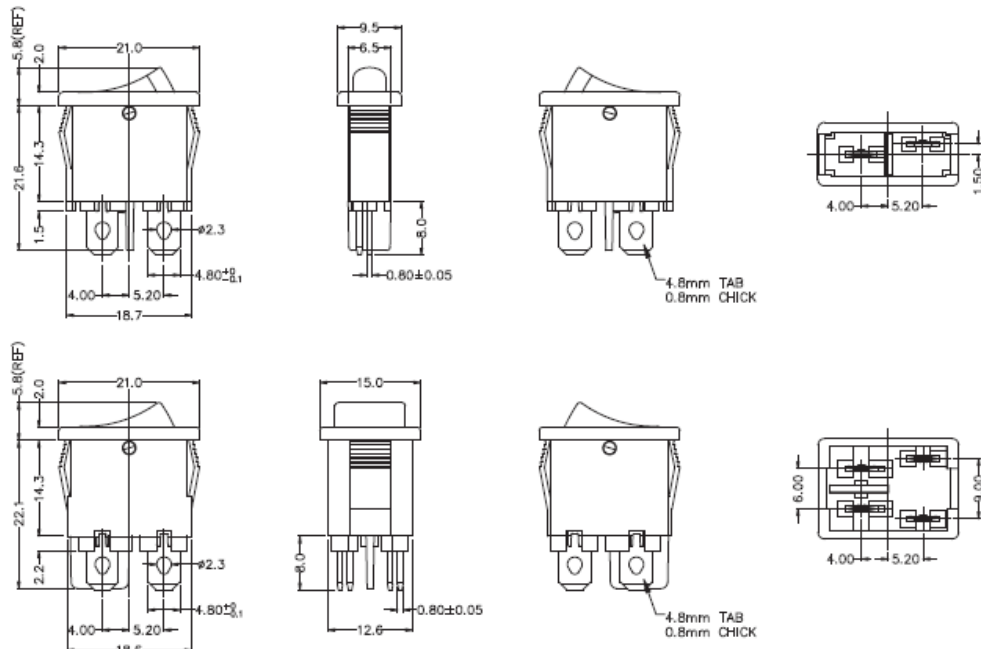


# R011A / R022A Series



▶ Specification	▶ Rocker Switch
<b>Power Rating</b>	10A 250V AC, T00, 1E4 (ENEC) 10A 250V AC, T100, 6E3, TV-5 (UL, CUL) 1/2HP 250V AC, 1/4HP 125V AC
<b>Electric Strength</b>	AC 1,500V for 1 Minute
<b>Contact Resistance</b>	20MΩ Max.
<b>Insulation Resistance</b>	100MΩ Min. at 500V DC
<b>Operating Temperature</b>	+85°C
<b>Materials</b>	Thermoplastic UL Flammability 94V-0 & Copper Alloy
<b>Series</b>	011A : Single Pole 022A : Double Pole

Unit : mm



# 0721 / 0724 Series



※ Wire type Optional

Specification	C8 Inlet	C6 Inlet
<b>Power Rating</b>	2.5A 250V AC Europe & UL & CSA 7A 125V AC UL	2.5A 250V AC Europe & UL & CSA 7A 125V AC UL
<b>Electric Strength</b>	AC 2,000V for 1 Minute	AC 2,000V for 1 Minute
<b>Contact Resistance</b>	30MΩ Max.	30MΩ Max.
<b>Insulation Resistance</b>	100MΩ Min. at 500V DC	100MΩ Min. at 500V DC
<b>Operating Temperature</b>	+105°C	+105°C
<b>Materials</b>	Thermoplastic UL Flammability 94V-0 & Copper Alloy	Thermoplastic UL Flammability 94V-0 & Copper Alloy
<b>Terminal</b>	PH : Clamps	PH : Clamps

Unit : mm

