

U.I. Lapp GmbH	<b>PRODUCT INFORMATION</b>	
<b>EPIC® H-BE 10 Crimp termination</b>		05.11.2015

The proven standard inserts for easy assembly  
Standard inserts with screw, crimp cage clamp and Push-In termination  
The EPIC® H-BE series is suitable for applications that require a reliable connection when working with high voltages and currents



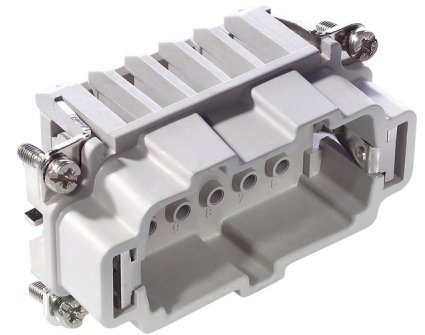
Industrial machinery and plant engineering



Robust



Temperature-resistant



#### Info

For wire connection up to 4 mm<sup>2</sup>  
Screw, crimp, cage clamp and Push-In version - freely combinable

#### Application range

Mechanical engineering  
Light & sound technology  
Plastics industry

#### Remark

Photographs are not to scale and do not represent detailed images of the respective products.

#### Technical Data

Rated voltage (V):	IEC: 500 V UL: 600 V CSA: 600 V
Rated impulse voltage:	6 kV
Rated current (A):	IEC: 16 A UL: 16 A CSA: 16 A
Contact resistance:	< 2 mOhm
Contacts:	Copper alloy, hard silver/gold-plated
Number of contacts:	10 + PE
Termination methods:	Crimp termination: 0.5 - 4.0 mm <sup>2</sup>
Cycle of mechanical operation:	100
Temperature range:	-40°C to +100°C, short-term up to +125°C
VDE-tested:	Certified production control: VDE-REG. no.: B437 UL-tested: UL File Number: E75770
Degree of soiling:	3


Product Management	Document: LAPP_PRO510EN.pdf	1 / 3
--------------------	-----------------------------	-------

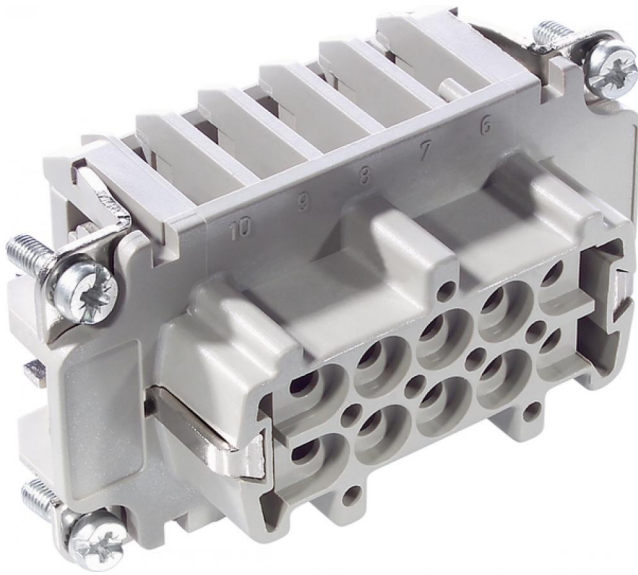


**EPIC® H-BE 10 Crimp termination**

05.11.2015

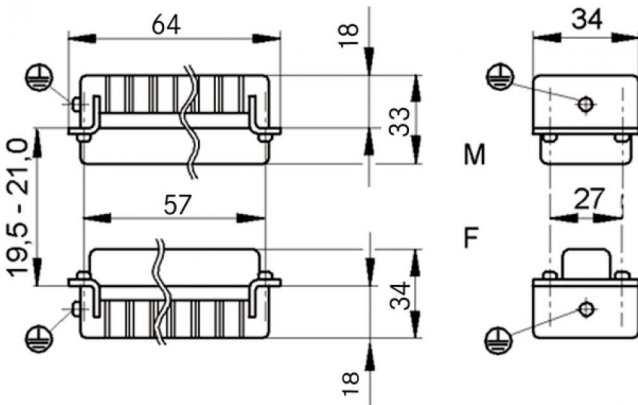
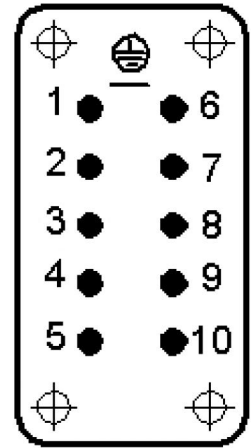
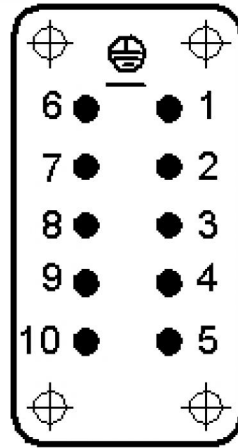
Part number	Article description	Contact type	Number of operating contacts	Pieces / PU
H-BE 10 crimp termination				
10182000	EPIC® H-BE 10 SCM	male	1 - 10	10
10183000	EPIC® H-BE 10 BCM	female	1 - 10	10

U.I. Lapp GmbH	<b>PRODUCT INFORMATION</b>	
<b>EPIC® H-BE 10 Crimp termination</b>		05.11.2015



**M**

**F**



Product Management	Document: LAPP_PRO510EN.pdf	3 / 3
--------------------	-----------------------------	-------