

product specifications for:
CLS Series 16 Inline Cams

Item #: CLS2FB

Description

FEMALE CLS SERIES 16 INLINE #6 - #2 AWG

Electrical Specifications

Max. Amperage: 190A with #2 AWG

Max. Voltage: 600V AC/DC

Material Specifications

Housing Material: Santoprene TPV

Contact Material: Brass

Temperature Rating: -40°C to 105°C

Mechanical Specification

Gender: Female

Connection Type: Double Set Screw

(Torque to 160 in-lbs.)

Retaining Screw: Glass Filled / Heat Stabilized Nylon

Example: CLS2MB + **A** = CLS2MB-A

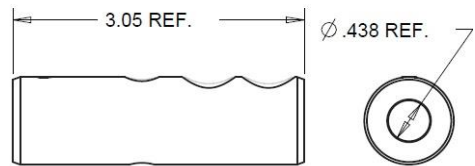
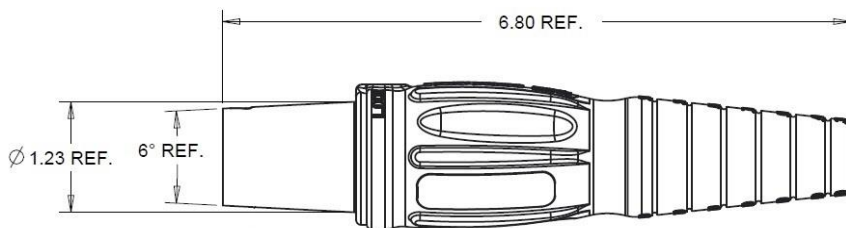


Standards and Certifications

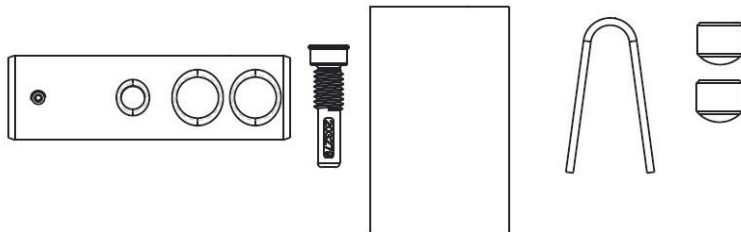
UL Listed: File E471676

CSA Certified: 0812900000

Environmental Rating: Type 3R & 4



SHOWN FOR SIZING



toll free 800.307.6702 | marincopowerproducts.com

©2015 Marincó Power Products. All rights reserved.

MARINCO
power products