

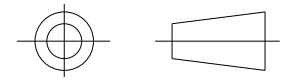
Heatshrinkable moulded shapes Low Profile Straight Boots - HellermannTyton

DRAWING No.
152056

SHT. 1
OF
1 SHTS.

© THE COPYRIGHT OF THIS DRAWING IS RESERVED BY HELLERMANN TYTON. IT IS ISSUED ON CONDITION THAT IT IS NOT COPIED, REPRODUCED OR DISCLOSED TO A THIRD PARTY EITHER WHOLLY OR IN PART WITHOUT THE CONSENT IN WRITING OF HELLERMANN TYTON.

THIRD ANGLE PROJECTION



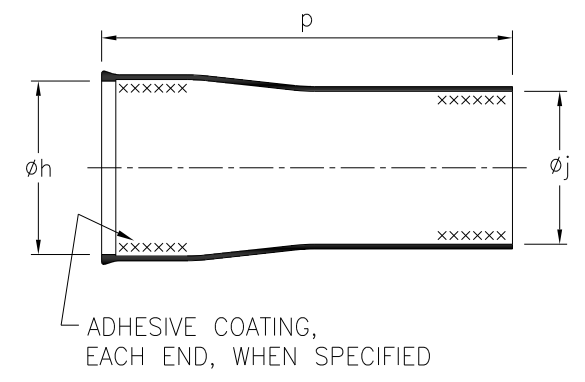
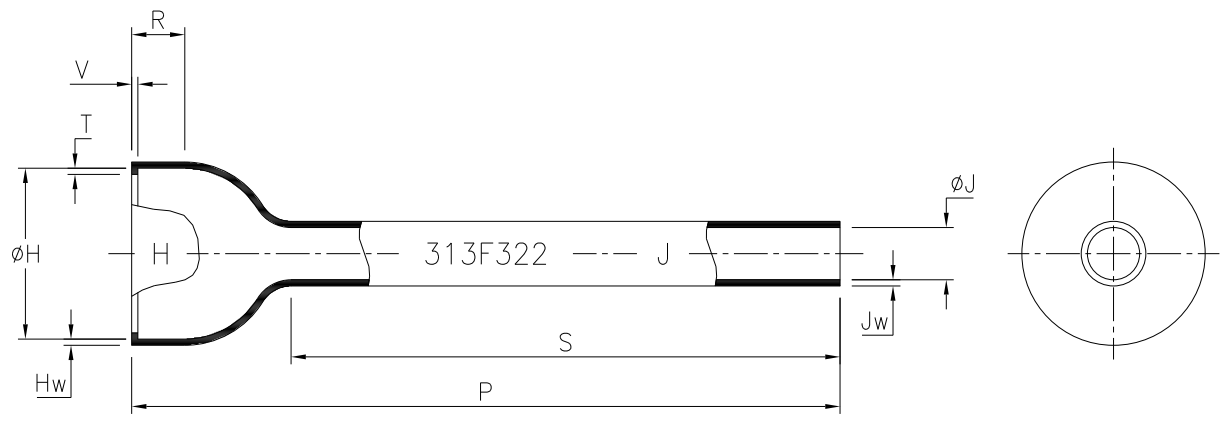
BS 8888

DO NOT SCALE
IF IN DOUBT ASK

Q.A.	H/S SETT
H/S Q.A.	REL. INSP.
H/S PROD	EXT.ISS.CODE 7

STANDARD PART (AFTER UNRESTRICTED RECOVERY)

EXPANDED (AS SUPPLIED)



FOR MOULDING PURPOSES ONLY

MOULD SHAPE	øH	øJ	P	R	S	T	V	Hw	Jw
	MAX	MAX	±6.4 (±.25)	±1.8 (±.07)	±6.4 (±.25)	±0.8 (±.03)	±0.8 (±.03)	±20%	±20%
313F322-*	8.9 (.35)	6.1 (.24)	105.9 (4.17)	11.7 (.46)	86.4 (3.40)	1.3 (.05)	1.8 (.07)	1.8 (.07)	1.8 (.07)
313F322-*-18	8.9 (.35)	6.1 (.24)	48.0 (1.89)	11.7 (.46)	28.4 (1.12)	1.3 (.05)	1.8 (.07)	1.8 (.07)	1.8 (.07)
313F322-*-33	8.9 (.35)	6.1 (.24)	76.2 (3.00)	11.7 (.46)	56.6 (2.23)	1.3 (.05)	1.8 (.07)	1.8 (.07)	1.8 (.07)

PART NO.	EXPANDED DIMENSIONS (AS SUPPLIED)			RECOVERED DIAMETERS		RECOVERED DIMENSIONS						
	øh	øj	p	øH	øJ	P	R	S	T	V	Hw	Jw
	MIN	MIN	TOL	MAX	MAX	±10%	±15%	±10%	±0.8 (±.03)	+1.5,-0.8 (+.06,-.03)	+1.5,-0.8 (+.06,-.03)	±0.8 (±.03)
313F322-*	23.9 (.94)	17.3 (.68)	76.2 ±12.7 (3.00 ±.50)	9.9 (.39)	6.6 (.26)	105.9 (4.17)	11.7 (.46)	86.4 (3.40)	1.3 (.05)	1.5 (.06)	1.5 (.06)	1.5 (.06)
313F322-8	23.9 (.94)	17.3 (.68)	85.9 ±12.7 (3.38 ±.50)	9.9 (.39)	6.6 (.26)	105.9 (4.17)	11.7 (.46)	86.4 (3.40)	1.3 (.05)	1.5 (.06)	1.5 (.06)	1.5 (.06)
313F322-*-18	23.9 (.94)	17.3 (.68)	45 ±6.4 (1.77 ±.25)	9.9 (.39)	6.6 (.26)	48.0 (1.89)	11.7 (.46)	28.4 (1.12)	1.3 (.05)	1.5 (.06)	1.5 (.06)	1.5 (.06)
313F322-*-33	23.9 (.94)	17.3 (.68)	70 ±6.4 (2.76 ±.25)	9.9 (.39)	6.6 (.26)	76.2 (3.00)	11.7 (.46)	56.6 (2.23)	1.3 (.05)	1.5 (.06)	1.5 (.06)	1.5 (.06)

* ALL MATERIALS UNLESS SPECIFIED OTHERWISE

Heatshrinkable moulded shapes Low Profile Straight Boots - HellermannTyton

For information only, not subject to technical changes.

2	P1329	G.B.	11/10/10
1	P1190	S.Almond	01/04/08
ISSUE	NOTE No.	DRAWN	DATE

HellermannTyton

Pennycross Close, Plymouth, Devon, England
Tel ++44 (0) 1752 701261 Fax ++44 (0) 1752 790058

NAME	S.Almond	SCALE	NTS	ADHESIVE	A3 ORIGINAL SHEET SIZE 420mm x 297mm	SHT. 1 OF 1 SHTS.
DATE	01/04/08	DIMS IN	mm (in)			
TITLE	BOTTLE SLEEVE		PART No.	DRAWING No.		
			313F322	152056		