

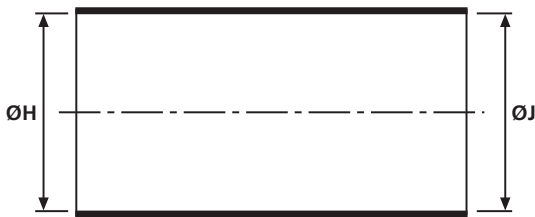
Bottle Shapes

• Helashrink 100 Series, without rib

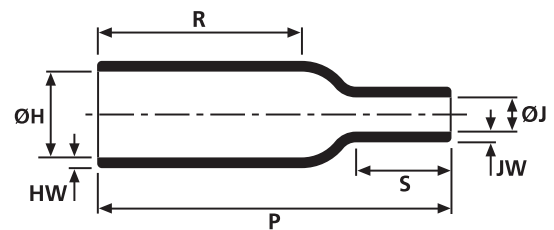
This style provides connector cable strain relief. Can be installed on the connector rear thread or plain shaft and allows easy re-entry for repair when combined with a hot melt adhesive.



109-1-G supplied / fully recovered.



a: Expanded form (supplied)



b: Fully recovered form (after heating)

Sizes and Type Table

Type	ØH min. a	ØH max. b	ØJ min. a	ØJ max. b	P ± 10%	R max.	HW ± 20%	JW ± 30%	S nom
104-1	16.5	7.9	16.5	3.8	25.4	14.2	1.3	1.3	6.9
104-2	10.7	7.9	8.4	3.8	25.4	14.2	1.3	1.3	6.9
105-1	23.4	10.4	23.4	5.6	38.1	22.9	1.5	1.5	10.2
106-1	31.0	14.2	31.0	6.6	55.4	26.5	1.8	1.8	16.5
106-2	19.3	14.2	14.2	6.6	55.4	26.5	1.8	1.8	16.5
101-1	31.0	17.8	31.0	7.1	66.0	38.1	2.0	2.0	17.8
101-2	23.9	17.8	15.5	7.1	66.0	38.1	2.0	2.0	17.8
102-1	36.1	22.4	36.1	8.4	73.7	43.2	1.8	1.8	17.8
102-2	30.0	22.4	18.0	8.4	73.7	43.2	1.8	1.8	17.8
1006-1	40.0	20.0	20.0	6.0	78.8	30.0	1.5	1.0	20.0
103-1	42.7	28.2	42.7	9.9	95.5	54.0	2.0	2.0	24.0
103-2	37.8	28.2	21.3	9.9	95.5	54.0	2.0	2.0	24.0
107-1	51.9	35.1	51.9	15.8	124.5	66.0	3.1	3.1	40.6
107-2	46.9	35.1	35.6	15.8	124.5	66.0	3.1	3.1	40.6
118-1	66.0	44.4	66.0	20.3	150.0	80.0	3.8	3.8	48.3
119-1	86.4	57.2	86.4	26.6	209.6	118.1	4.6	4.6	61.0
113-1	10.7	7.9	4.6	2.0	25.4	14.5	1.3	1.0	4.6
113-2	21.6	7.9	5.8	2.0	25.4	14.5	1.3	1.3	4.6
108-1	13.7	10.4	6.6	3.1	38.1	22.9	1.5	1.0	7.6
108-2	27.9	10.4	7.9	3.1	38.1	22.9	1.5	1.0	7.6
109-1	19.3	14.2	8.1	4.1	53.3	35.6	2.0	1.3	7.6
109-2	38.1	14.2	11.7	4.1	53.3	35.6	2.0	1.3	7.6
110-1	23.9	17.8	11.7	5.6	63.5	38.1	2.5	1.5	12.7
110-2	50.8	17.8	17.0	5.6	63.5	38.1	2.5	1.5	12.7
111-1	30.0	22.4	14.7	7.1	76.2	43.2	3.1	1.8	15.2
111-2	63.5	22.4	21.3	7.1	76.2	43.2	3.1	1.8	15.2
116-1	59.4	44.5	43.7	20.8	158.8	91.4	5.6	4.6	41.9

All dimensions in mm. Subject to technical changes.