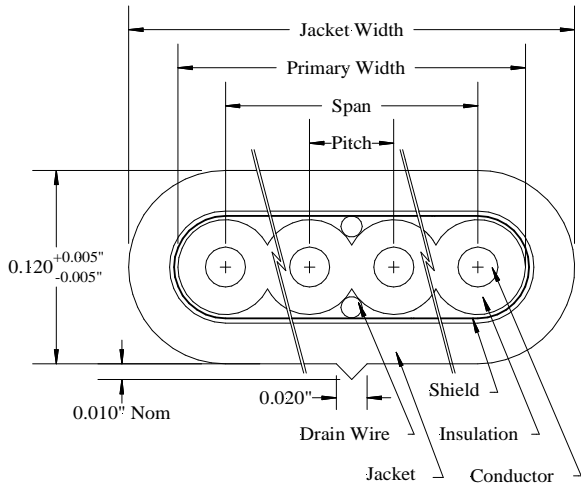


## MULTI- CONDUCTOR 24 AWG 0.050" CENTER FLAT SDL CABLE



### CONSTRUCTION

#### Single Component

**Conductor:** 24 AWG 7/32 Tin Plated Copper, 0.024 Inch Diameter  
**Pitch:** 0.050 ± 0.003 Inches

#### Final Assembly

**Core<sup>1</sup>:** Multi-conductors Laid Flat and Parallel  
**Insulation:** 0.012 Inches of PVC, 0.048 Inch Minor Diameter  
**Drain Wires (2):** 28 AWG 7/36 Tin Plated Copper, 0.015 Inch Diameter  
**Shield:** Aluminum/Polyester/Aluminum Tape, 25% Overlap, Applied Longitudinally  
**Jacket:** 0.032 Inches of PVC, Color – See Table 2  
**Minor Diameter:** 0.120 ± 0.005 Inches  
**Major Diameter:** See Jacket Width in Table 1  
**Print Legend (Light Gray Ink):** "MADISON CABLE (UL) TYPE CL2 90°C 24 AWG CSA AWM II A/B 90°C 300V FT1 SUBSTANCE COMPLIANT 2011/65/EU"

<sup>1</sup> Drawing shows only a 4-conductor construction as an example.

**TABLE 1 – P/N & CONSTRUCTION**

Madison P/N	Number of Conductor	Dimensions		
		Span (Inches)	Primary Width (Inches)	Jacket Width (Inches)
04WFZLF005	4	0.150±0.005	0.200±0.005	0.275+0.005/-0.010
04WFZLF006	4	0.150±0.005	0.200±0.005	0.275+0.005/-0.010
06WFZLF003	6	0.250±0.006	0.300±0.006	0.375+0.005/-0.010
06WFZLF007	6	0.250±0.006	0.300±0.006	0.375+0.005/-0.010
08WFZLF003	8	0.350±0.007	0.400±0.007	0.475+0.005/-0.010
08WFZLF006	8	0.350±0.007	0.400±0.007	0.475+0.005/-0.010
16WFZLF003	16	0.750±0.011	0.800±0.011	0.875+0.005/-0.010
16WFZLF006	16	0.750±0.011	0.800±0.011	0.875+0.005/-0.010

**TABLE 2 – P/N & JACKET COLOR**

Madison P/N	Jacket Color
04WFZLF005	Raven Black
04WFZLF006	Gray
06WFZLF003	Black
06WFZLF007	Gray
08WFZLF003	Black
08WFZLF006	Gray
16WFZLF003	Black
16WFZLF006	Gray

### ELECTRICAL CHARACTERISTICS

**Impedance (Signal-to-Ground):** 39 Ohms Nominal @ 1 MHz

**Capacitance:** 60 pF/ft Maximum @ 1 MHz

**Time Delay:** 2.0 ns/ft Maximum

**Insulation Resistance:** 1000 Megohms-10 ft @ 20°C

**Shield Effectiveness:** 30 dB Minimum @ from 30 to 1000 MHz

**Dielectric Withstand:** 1500 Volts RMS

#### Crosstalk:

**Near-End:** 1% Maximum Peak-to-Peak @ 2 ns Rise-Time, 10-90%, on a 10 ft sample

**Far-End:** 4% Maximum Peak-to-Peak @ 2 ns Rise-Time, 10-90%, on a 10 ft sample

**Conductor DC Resistance:** 0.024 Ohms/ft Nominal @ 20°C

### SAFETY CERTIFICATION

**UL Listing:** Type CL2 as specified in Article 725 of the National Electrical Code

**CSA Certification:** AWM II A/B 90°C 300 Volts FT1

**RoHS II Material Compliance:** In accordance with EU Directive 2011/65/EU for the Restriction of Hazardous Substances



**Madison Cable**  
 125 Goddard Memorial Drive  
 Worcester, MA 01603 USA  
 (508) 752-2884 (877) MADISON

### REVISION HISTORY

Rev	Date	By	Description
1	06/10/05	EP	Initial Release
2	11/30/05	EP	Revised Legend
3	06/23/11	DM	Revised print legend
4	02/11/13	HA	Revised Print Legend and Safety Certification
5	06/05/15	DC	Revised Jacket Color on 04WFZLF005

**Spec Number:** 101-2676

**Part Number:** See Table 1

**Customer:**

**Customer #:**

**Prepared By:** D.M. Card

**Reviewed By:** T. Grzysiewicz

**Page**

1 of 1

Users should evaluate the suitability of this product for their application. Contact factory for latest revision of specification. TE Connectivity reserves the right to make changes in materials or processing, which do not affect compliance with any specification, without notification to the Buyer.