

U.I. Lapp GmbH	<b>PRODUCT INFORMATION</b>	
<b>EPIC® MC Module: HE 4pole</b>		05.11.2015

The mixed assembly guarantees high flexibility. For applications in mechanical and plant engineering, for printing machines and slide-in technology.

The mix of different functions in one plug guarantees high flexibility

Assembly of individual connectors, suitable for different applications



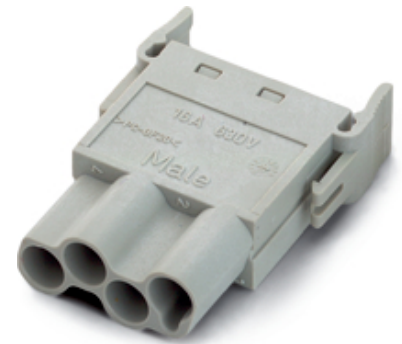
Automation & fältinstallation



Industrial machinery and plant engineering



Wind Energy



### Application range

Plant engineering

Printing machines

Control engineering

### Remark

Photographs are not to scale and do not represent detailed images of the respective products.

### Technical Data

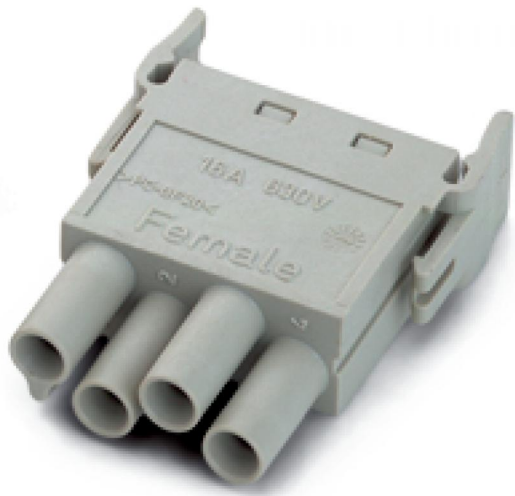
Rated voltage (V):	630 V
Rated current (A):	25 A
Contact resistance:	< 2 mOhm
Contacts:	Copper alloy, hard silver-plated
Number of contacts:	4
Termination methods:	Crimp termination: 0.5 - 4.0 mm <sup>2</sup>
Cycle of mechanical operation:	100
Temperature range:	-40°C to +100°C, short-term up to +125°C
Degree of soiling:	3

Product Management	Document: LAPP_PRO813EN.pdf	1 / 3
--------------------	-----------------------------	-------

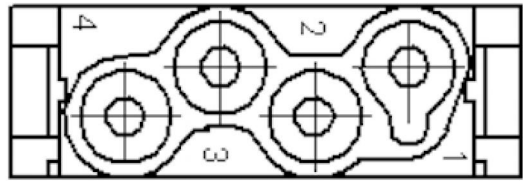


Part number	Article description	Contact type	Number of operating contacts	Slots	Pieces / PU
Module: 4-pin HE					
10399000	MCS 4 CM	male	4	1	10
10399100	MCB 4 CM	female	4	1	10

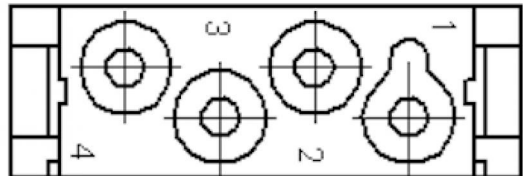
U.I. Lapp GmbH	<b>PRODUCT INFORMATION</b>	
	<b>EPIC® MC Module: HE 4pole</b>	05.11.2015



M



F



Product Management	Document: LAPP_PRO813EN.pdf	3 / 3
--------------------	-----------------------------	-------