
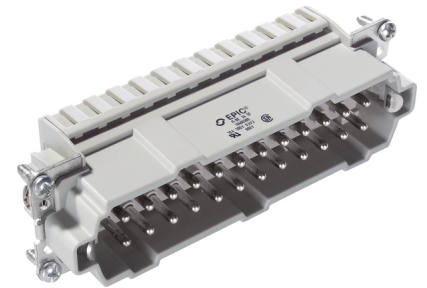


U.I. Lapp GmbH	PRODUCT INFORMATION	
	EPIC® H-BE 48 Cage clamp	05.11.2015

The proven standard inserts for easy assembly
Standard inserts with screw, crimp cage clamp and Push-In termination
The EPIC® H-BE series is suitable for applications that require a reliable connection when working with high voltages and currents



Industrial machinery and plant engineering



Robust



Temperature-resistant

Info

Multifunctional insert for versatile applications
Screw, crimp, cage clamp and Push-In version - freely combinable

Application range

Mechanical engineering
Light & sound technology
Plastics industry

Remark

Photographs are not to scale and do not represent detailed images of the respective products.

Technical Data

Stripping length (mm):	7
Rated voltage (V):	IEC: 500 V UL: 600 V CSA: 600 V
Rated impulse voltage:	6 kV
Rated current (A):	IEC: 16 A UL: 16 A CSA: 16 A
Contact resistance:	1.5 - 4 mohm
Contacts:	Copper alloy, hard silver-plated
Number of contacts:	48 + PE
Termination methods:	Cage clamp termination: 0.5 - 2.5 mm ²
Cycle of mechanical operation:	100
Temperature range:	-40°C to +100°C, short-term up to +125°C
VDE-tested:	UL-tested: UL File Number: E75770
Degree of soiling:	3

Product Management	Document: LAPP_PRO142578EN.pdf	1 / 3
--------------------	--------------------------------	-------



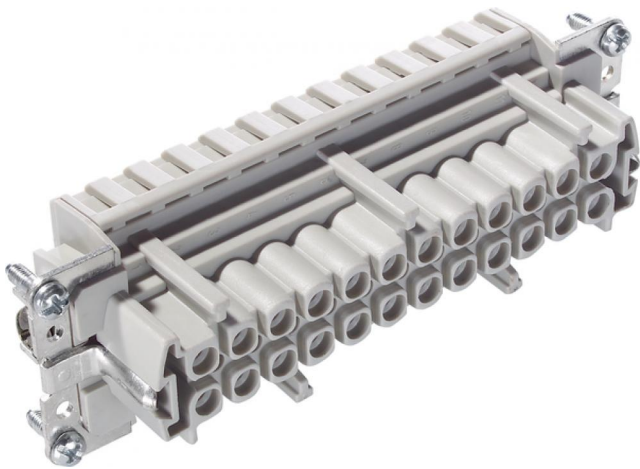
EPIC® H-BE 48 Cage clamp

05.11.2015

Part number	Article description	Contact type	Wire protection	Number of operating contacts	Pieces / PU
H-BE 48 cage clamp termination					
10400500	EPIC® H-BE 24 SF 25-48	male	yes	25 - 48	5
H-BE 24 cage clamp termination					
10400300	EPIC® H-BE 24 SF	male	yes	1 - 24	5
10401300	EPIC® H-BE 24 BF	female	yes	1 - 24	5
10401500	EPIC® H-BE 24 BF 25-48	female	yes	25 - 48	5

EPIC® H-BE 48 Cage clamp

05.11.2015



M

F

