


| | | |
|-------------------|----------------------------|--|
| U.I. Lapp GmbH | PRODUCT INFORMATION |  |
| | EPIC® H-A 4 | 05.11.2015 |

H-A inserts with screw termination up to 2.5 mm² wire cross section
The small H-A 3 / H-A 4 are used whenever there is minimal space.
Easy to service screw connection
Easy cable connection with strait cable entry in the contacts



Industrial machinery and plant engineering



Assembly time



Space requirement



Info

Insert for three-phase current application with neutral conductor
easy to assemble due to straight entry of conductors

Application range

Apparatus construction
Machine and equipment manufacturing
Control engineering

Remark

Photographs are not to scale and do not represent detailed images of the respective products.

Technical Data

| | |
|--------------------------------|---|
| Stripping length (mm): | 6 |
| Rated voltage (V): | IEC: 400 V UL: 600 V CSA: 600 V |
| Rated impulse voltage: | 4 kV |
| Rated current (A): | IEC: 23 A UL: 10 A CSA: 10 A |
| Contact resistance: | 1.5 - 4 mohm |
| Contacts: | Copper alloy, hard silver-plated |
| Number of contacts: | 4 + PE |
| Termination methods: | Screw termination: 0.5 - 2.5 mm ² (2.5 mm ² with conductor end sleeves depending on the crimping profile) |
| Cycle of mechanical operation: | 100 |
| Temperature range: | -40°C to +100°C, short-term up to +125°C |
| VDE-tested: | Certified production control: VDE-REG. no.: B437 UL-tested: UL File Number: E75770 |
| Degree of soiling: | 3 |


| | | |
|--------------------|-----------------------------|-------|
| Product Management | Document: LAPP_PRO332EN.pdf | 1 / 3 |
|--------------------|-----------------------------|-------|



EPIC® H-A 4

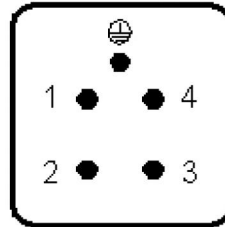
05.11.2015

| Part number | Article description | Contact type | Number of operating contacts | Pieces / PU |
|-------------------------|---------------------|--------------|------------------------------|-------------|
| H-A 4 screw termination | | | | |
| 10431000 | H-A 4 SS | male | 1 - 4 | 10 |
| 10432000 | H-A 4 BS | female | 1 - 4 | 10 |

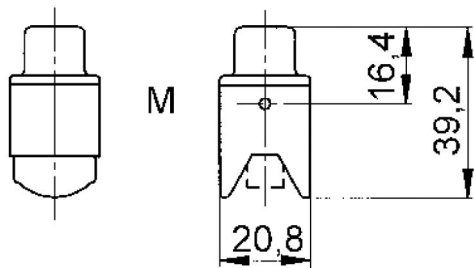
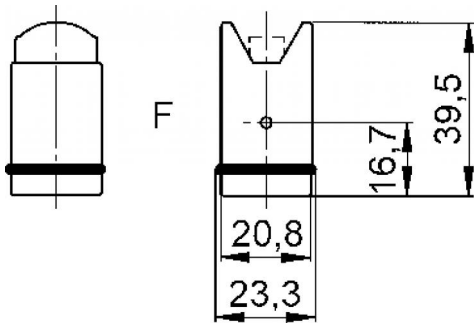
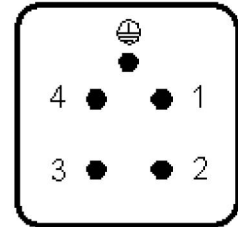
| | | |
|-------------------|----------------------------|--|
| U.I. Lapp GmbH | PRODUCT INFORMATION |  |
| | EPIC® H-A 4 | 05.11.2015 |



M



F



| | | |
|--------------------|-----------------------------|-------|
| Product Management | Document: LAPP_PRO332EN.pdf | 3 / 3 |
|--------------------|-----------------------------|-------|