

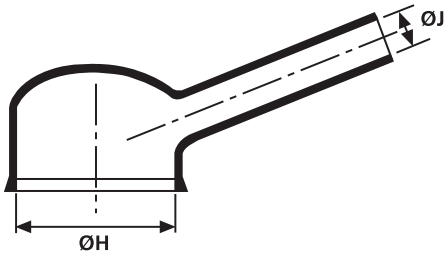
Right Angle Shapes, VG style

- Helashrink 1100 Series, with rib, low profile, high ratio

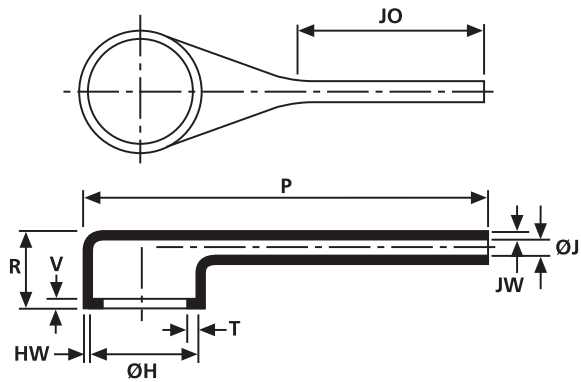
This style provides connector cable strain relief. Used in applications for partially loaded connectors with small cable diameters. The tail is designed to allow easy orientation prior to cooling.



1135-1-G supplied / fully recovered.



a: Expanded form (supplied)



b: Fully recovered form (after heating)

Sizes and Type Table												
Type	Designation as per VG-Norm	ØH	ØH	ØJ	ØJ	P	R	HW	JW	JO	V	T
		min. a	max. b	min. a	max. b	± 10%	± 10%	± 20%	± 20%	± 10%	± 10%	± 20%
1133-1	VG95343T06F011A	19.0	13.0	6.0	2.0	44.0	16.3	1.5	1.1	21.8	3.0	1.0
1133-2	-	19.0	13.0	6.0	2.0	30.0	16.0	1.5	1.1	1.0	3.3	1.0
1134-1	VG95343T18H001A	26.0	19.0	7.5	2.5	67.0	18.0	1.8	1.1	29.2	3.0	1.0
1135-1	VG95343T06F013A	34.0	26.0	9.5	3.0	81.0	18.8	1.8	1.1	35.3	3.0	1.0
1135-1	VG95343T06F013A	34.0	26.0	9.5	3.0	81.0	18.8	1.8	1.1	35.3	3.0	1.0
1136-1	VG95343T06F014A	43.5	34.0	11.5	3.5	116.0	21.3	1.8	1.1	47.0	3.0	1.7
1182-4	-	12.0	7.6	6.0	2.0	16.8	13.0	1.0	0.5	6.0	1.5	0.3

All dimensions in mm. Subject to technical changes.

Combinations "On request"					
Adhesive	Material				
	B7	G	J	H	L
WM250	√	√	√	√	-
W8	√	√	√	√	-
W24	√	√	√	√	√
V9500	√	√	√	√	-
HMT200A	√	√	√	√	-
W21	-	-	-	√	-
Without Adhesive	√	√	√	√	√

Standard combinations	
Article-No.	Type
411-33180	1133-1-G
411-33011	1133-2-G
411-34180	1134-1-G
411-35180	1135-1-G
411-35180	1135-1-G
411-36180	1136-1-G
411-82001	1182-4-G