

U.I. Lapp GmbH	PRODUCT INFORMATION	
	EPIC® Modular 3.6 machined contacts	05.11.2015

For inserts and modules of the EPIC® rectangular connectors



Info

silver plated and passivated contacts

Remark

Photographs are not to scale and do not represent detailed images of the respective products.

Product Management	Document: LAPP_PRO109800EN.pdf	1 / 3
--------------------	--------------------------------	-------

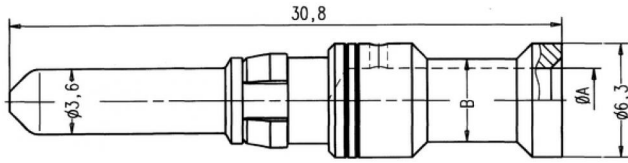


EPIC® Modular 3.6 machined contacts

05.11.2015

Part number	Article description	Contact type	Conductor cross-section (mm ²)	Surface	Stripping length (mm)	Pieces / PU
Contacts						
1121070C	MC 3.6 machined	male	1,5	Ag	10.0	100
1121570C	MC 3.6 machined	female	1,5	Ag	10.0	100
1121060C	MC 3.6 machined	male	2,5	Ag	10.0	100
1121560C	MC 3.6 machined	female	2,5	Ag	10.0	100
1121000C	MC 3.6 machined	male	4.00	Ag	10.0	100
1121500C	MC 3.6 machined	female	4.00	Ag	10.0	100
1121010C	MC 3.6 machined	male	6.00	Ag	10.0	100
1121510C	MC 3.6 machined	female	6.00	Ag	10.0	100
1121020C	MC 3.6 machined	male	10.00	Ag	10.0	100
1121520C	MC 3.6 machined	female	10.00	Ag	10.0	100

U.I. Lapp GmbH	PRODUCT INFORMATION	 LAPP GROUP
	EPIC® Modular 3.6 machined contacts	05.11.2015



Product Management	Document: LAPP_PRO109800EN.pdf	3 / 3
--------------------	--------------------------------	-------