



## Heyco® Original Strain Relief Bushings

Straight-Thru for Round Cables  
.625" (15,9 mm) to .750" (19,0 mm) Mounting Holes



| WILL FIT THESE CABLES         |                    |                  |         | PANEL DIMENSIONS        |      |                          |      |                               |      | PART NO.    | DESCRIPTION | PART DIM.        |      | Mounting Hole Plug PART NO. |           |
|-------------------------------|--------------------|------------------|---------|-------------------------|------|--------------------------|------|-------------------------------|------|-------------|-------------|------------------|------|-----------------------------|-----------|
| UL Type                       | AWG/<br>Conductors | Approximate Size |         | A<br>Mounting Hole Dia. |      | B<br>To Prevent Rotation |      | Finished Fit Panel Thickness* |      |             |             | C<br>BODY LENGTH |      |                             |           |
|                               |                    | in.              | mm.     | in.                     | mm.  | in.                      | mm.  | in.                           | mm.  | in.         | mm.         |                  |      |                             |           |
| SJ, SJT & SJO                 | 18/2               | .300             | 7,6     | .625                    | 15,9 | .550                     | 14,0 | .062                          | 1,6  | <b>1217</b> | SR 6N-4     | .578             | 14,7 | 2497                        |           |
| Same as SR 6N-4 above except  |                    |                  |         |                         |      |                          |      |                               | .125 | 3,2         | <b>1210</b> | SR 6P-4          | .578 | 14,7                        | 2497      |
| SJT                           | 18/3               | .300-.330        | 7,6-8,4 | .625                    | 15,9 | .550                     | 14,0 | .062                          | 1,6  | <b>1197</b> | SR 6N2-4    | .578             | 14,7 | 2497                        |           |
| SJ, SJT & SJO                 | 16/2               | .325             | 8,3     | .625                    | 15,9 | .550                     | 14,0 | .062                          | 1,6  | <b>1200</b> | SR 6N3-4    | .578             | 14,7 | 2497                        |           |
|                               | 18/3               | .330             | 8,4     |                         |      |                          |      |                               |      |             |             |                  |      |                             |           |
|                               | 14/2               | .350             | 8,9     |                         |      |                          |      |                               |      |             |             |                  |      |                             |           |
|                               | 16/3               | .355             | 9,0     |                         |      |                          |      |                               |      |             |             |                  |      |                             |           |
|                               | 18/4               | .360             | 9,1     |                         |      |                          |      |                               |      |             |             |                  |      |                             |           |
| Same as SR 6N3-4 above except |                    |                  |         |                         |      |                          |      |                               | .125 | 3,2         | <b>1207</b> | SR 6P3-4         | .578 | 14,7                        | 2497      |
| S & ST                        | 18/2               | .390             | 9,9     | .625                    | 15,9 | .550                     | 14,0 | .062                          | 1,6  | <b>1202</b> | SR 6N5-4    | .578             | 14,7 | 2497                        |           |
|                               | 18/3               | .405             | 10,3    |                         |      |                          |      |                               |      |             |             |                  |      |                             |           |
|                               | 16/2               |                  |         |                         |      |                          |      |                               |      |             |             |                  |      |                             |           |
| Same as SR 6N5-4 above except |                    |                  |         |                         |      |                          |      |                               | .125 | 3,2         | <b>1204</b> | SR 6P5-4         | .578 | 14,7                        | 2497      |
| SJ, SJT & SJO                 | 18/2               | .300             | 7,6     | .625                    | 15,9 | .550                     | 14,0 | .156                          | 4,0  | <b>1214</b> | SR 6L-1     | .678             | 17,2 | consult Heyco               |           |
|                               | 16/2               | .325             | 8,3     | .656                    | 16,7 |                          |      |                               |      |             |             |                  |      |                             |           |
|                               | 18/3               | .330             | 8,4     | .656                    | 16,7 |                          |      |                               |      |             |             |                  |      |                             |           |
|                               | 16/3               | .355             | 9,0     | .687                    | 17,4 |                          |      |                               |      |             |             |                  |      |                             |           |
| HPD                           | 16/3               | .355             | 9,0     | .687                    | 17,4 |                          |      |                               |      |             |             |                  |      |                             |           |
| SJT                           | 18/4               | .360             | 9,1     | .750                    | 19,0 |                          |      |                               |      |             |             |                  |      |                             |           |
|                               | 14/3               | .370             | 9,4     |                         |      |                          |      |                               |      |             |             |                  |      |                             |           |
| S & ST                        | 18/2               | .390             | 9,9     | .660                    | 16,8 |                          |      | .062                          | 1,6  | <b>1244</b> | SR 7N-2     | .750             | 19,1 | 2503                        |           |
|                               | 18/3               | .405             | 10,3    |                         |      |                          |      |                               |      |             |             |                  |      |                             |           |
|                               | 16/2               | .405             | 10,3    |                         |      |                          |      |                               |      |             |             |                  |      |                             |           |
|                               | 16/3               | .430             | 10,9    |                         |      |                          |      |                               |      |             |             |                  |      |                             | .750-.781 |
| Same as SR 7N-2 above except  |                    |                  |         |                         |      |                          |      |                               | .125 | 3,2         | <b>1237</b> | SR 7P-2          | .750 | 19,1                        | 2503      |

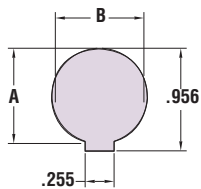
- Protects the lifeline of your electric/electronic products by absorbing the forces of pull, push, and twist that may be exerted on the flexible power cord.
- Securely anchors, insulates, and protects cables at panel entry points.
- Sizes SR 6-Series to SR 7-Series for mounting hole diameters from .625" (15,9 mm) to .781" (19,8 mm).
- Sizes for thin .062" (1,6 mm) panel available: SR 7N-2 See chart for details.
- See page 4-38 for corresponding **Mounting Hole Plugs** which can be used to fill blank/unused Mounting Holes and thus allow for a single panel design for multiple applications.
- Consult Heyco for other wire types and sizes.
- See pages 4-27 & 4-28 for SR assembly tools.
- See page 4-19 for Quick Specs.

**NEW!**

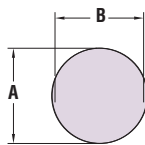
**NEW!**

Standard color black. Consult Heyco for white and other colors.

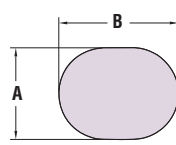
\*Maximum Panel Thickness. Part has additional clearance. Consult Heyco for your Custom Finished Fit Panel Thickness.



FOR SR-7KR-2 ONLY



STANDARD MOUNTING HOLES



ELONGATED MOUNTING HOLE

