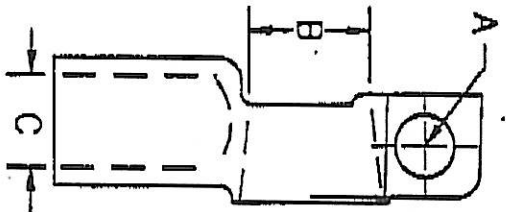
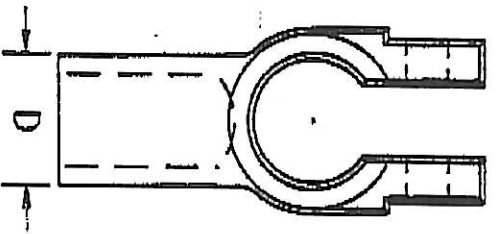


TOP



SIDE



BOTTOM

3 DEGREES TAPER PER SIDE

FTZ NO	CABLE SIZE	POLARITY	LETTER CODE	COLOR CODE	A	B*	C (MIN.)	D (MAX.)	E (MIN.)	F (MIN.)
12/22	4	U	J-H	GRN	.328	.660	.281	.453	.540	.825
12/20	4	N	J-H	GRN	.328	.660	.281	.453	.540	.825
12/21	4	P	J-H	GRN	.328	.687	.281	.453	.540	.825
12/40	1 OR 2	N	H-H	PNK	.328	.625	.375	.562	.540	.825
12/41	1 OR 2	P	H-H	PNK	.328	.687	.375	.562	.540	.825
12/60	1/0	N	E-A	BLK	.328	.625	.453	.625	.540	.825
12/61	1/0	P	E-A	BLK	.328	.687	.453	.625	.540	.825
12/70	2/0	N	A-C	ORG	.328	.625	.485	.672	.540	.825
12/71	2/0	P	A-C	ORG	.328	.687	.485	.672	.540	.825
12/80	3/0	N	A-B	PURP	.328	.625	.546	.760	.540	.825
12/81	3/0	P	A-B	PURP	.328	.687	.546	.760	.540	.825
12/90	4/0	N	A-A	YEL	.328	.625	.656	.875	.540	.825
12/91	4/0	P	A-A	YEL	.328	.687	.656	.875	.540	.825

MATERIAL COPPER ALLOY NO. C83300 MINCOPPER CONTENT 92%		TOLERANCES UNSPECIFIED TOLERANCES DECIMALS + .020 - .020 EXCEPT ON MIN. & MAX. DIMENSIONS		FTZ INDUSTRIES, INC. 515 PALMETTO DR. SIMPSONVILLE, SC 29680 864-963-5000			TITLE POST TOP BATTERY TERMINALS STRAIGHTS		SCALE	SF	DRAWING NUMBER
				PLATING	DR BY	CK BY	DATE				
				TIN-PL	WH		12/4/97			101	