

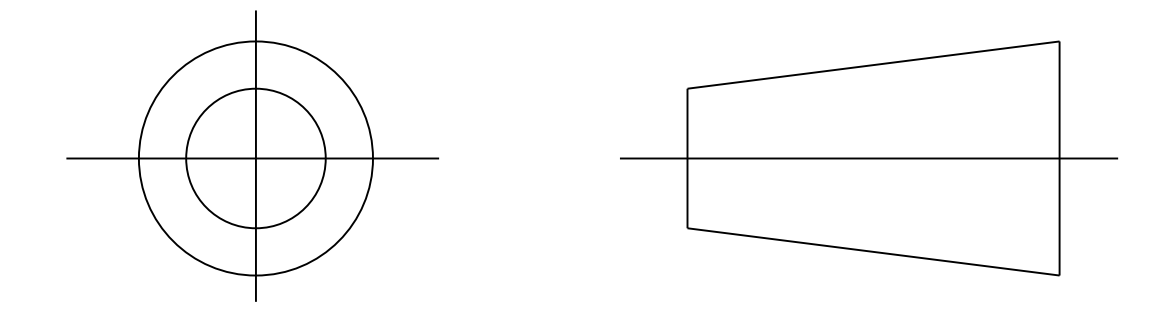
Heatshrinkable Moulded Shapes Bulbous Long Outlets HellermannTyton

DRAWING No.
152013

SHT. 1
OF
1 SHTS.

© THE COPYRIGHT OF THIS DRAWING IS RESERVED BY HELLERMANN TYTON. IT IS ISSUED ON CONDITION THAT IT IS NOT COPIED, REPRODUCED OR DISCLOSED TO A THIRD PARTY EITHER WHOLLY OR IN PART WITHOUT THE CONSENT IN WRITING OF HELLERMANN TYTON.

THIRD ANGLE PROJECTION

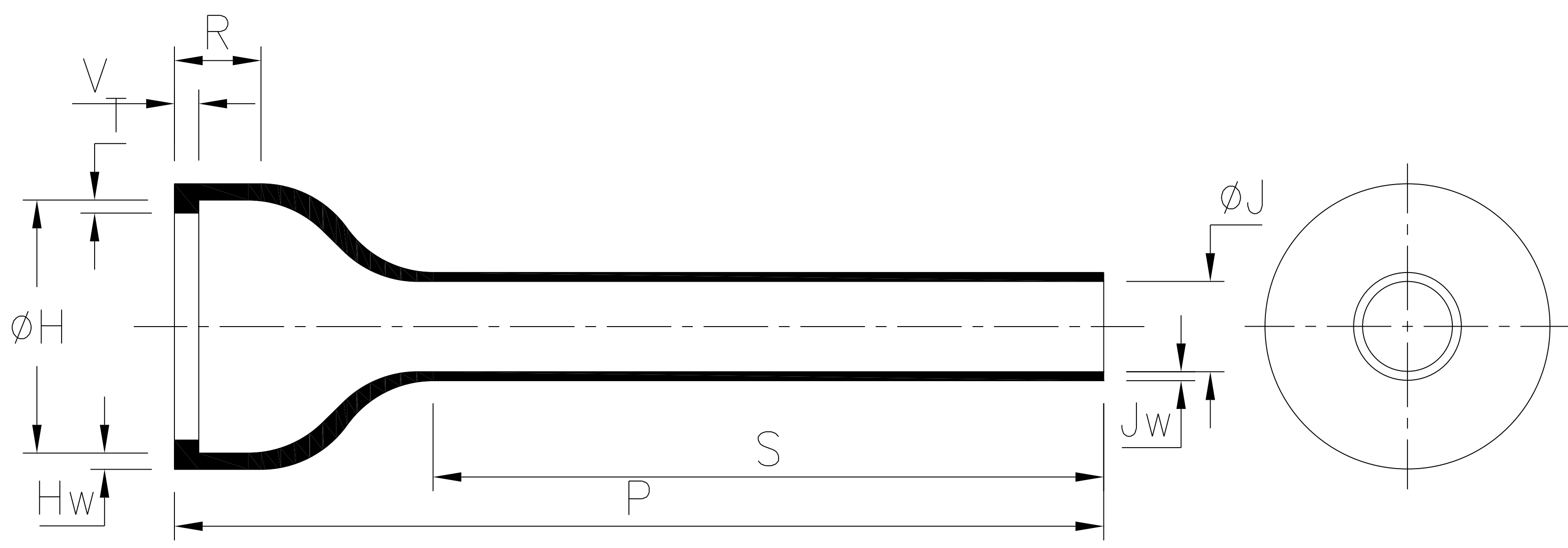


BS 8888

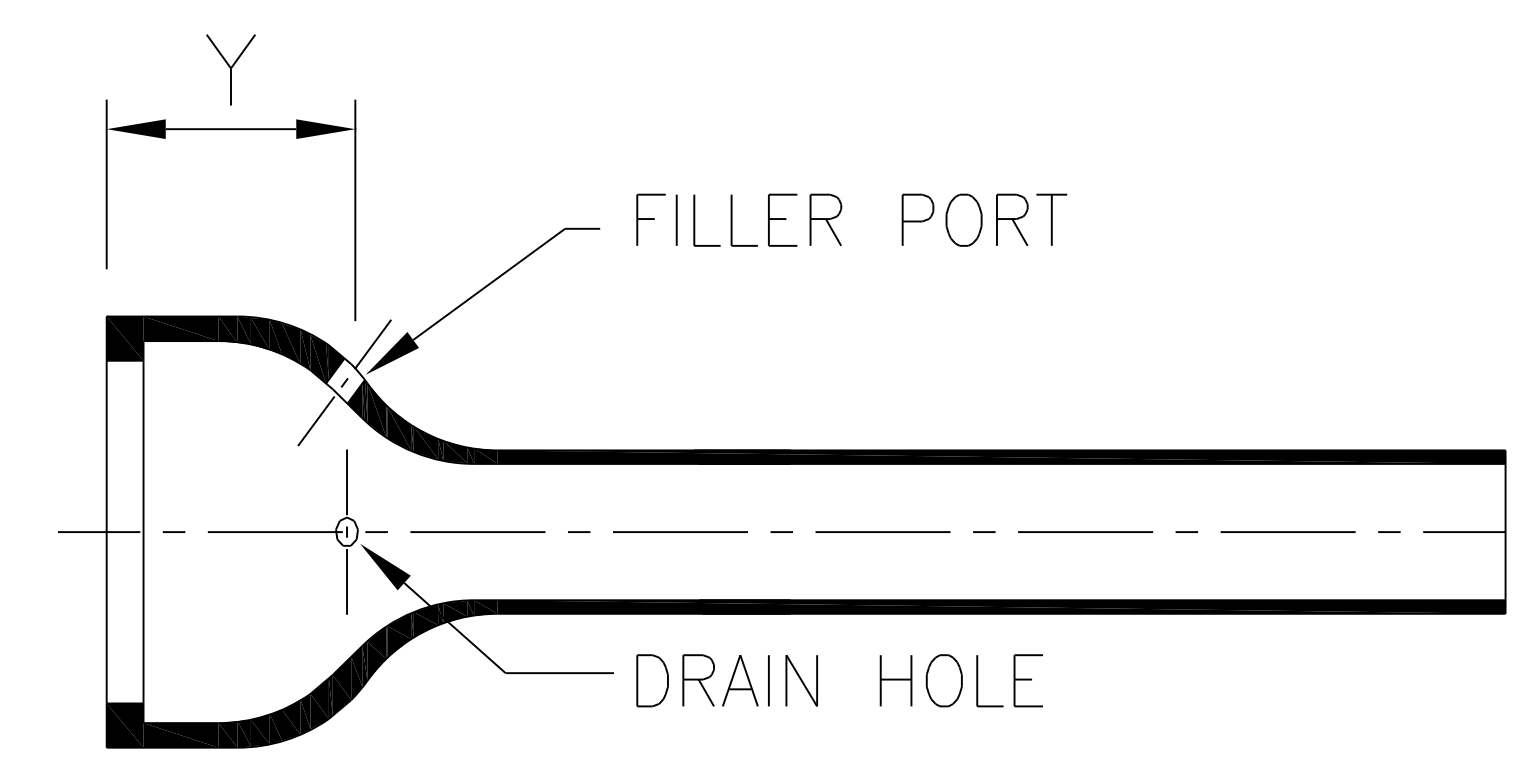
DO NOT SCALE
IF IN DOUBT ASK

Q.A.	H/S SETT
H/S Q.A.	REL. INSP.
H/S PROD	EXT. ISS. CODE

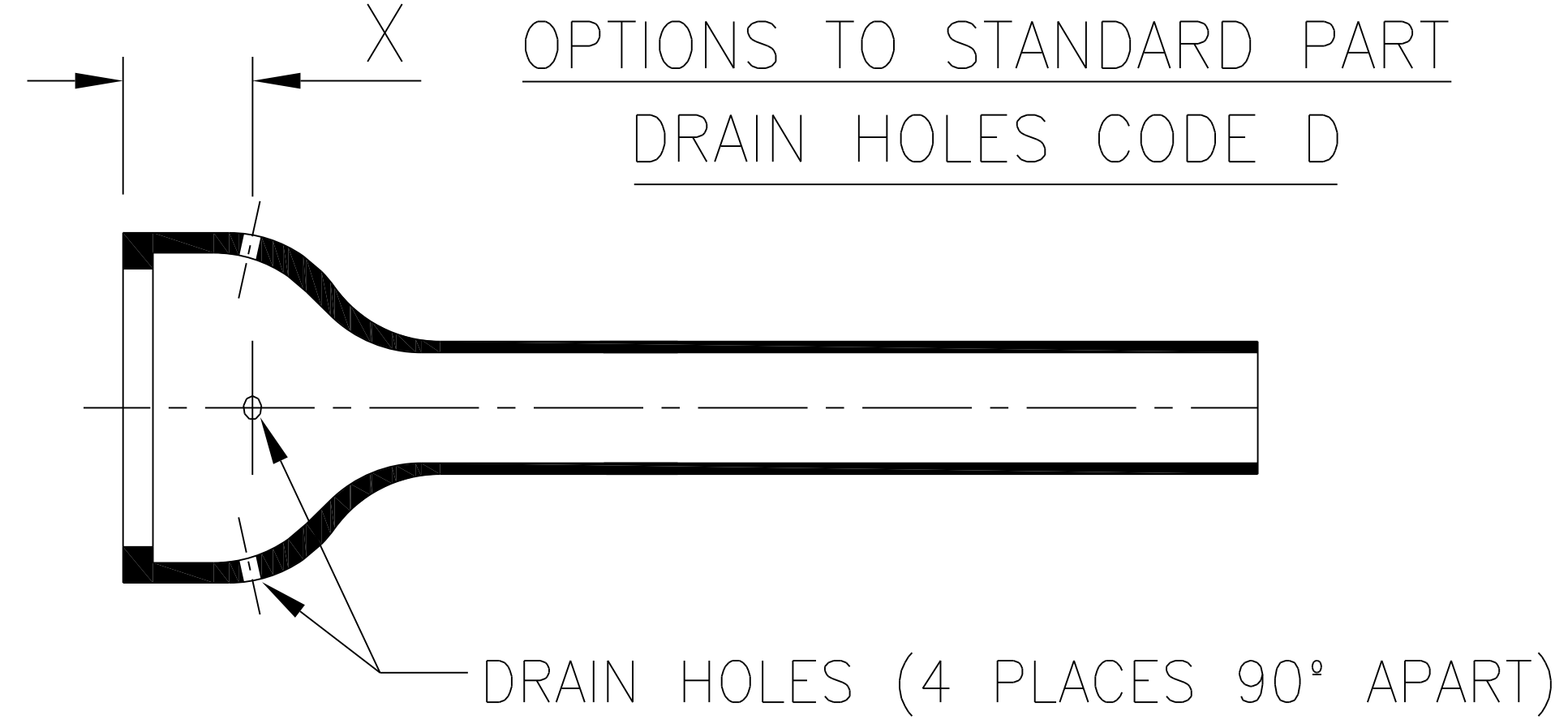
STANDARD PART (AFTER UNRESTRICTED RECOVERY)



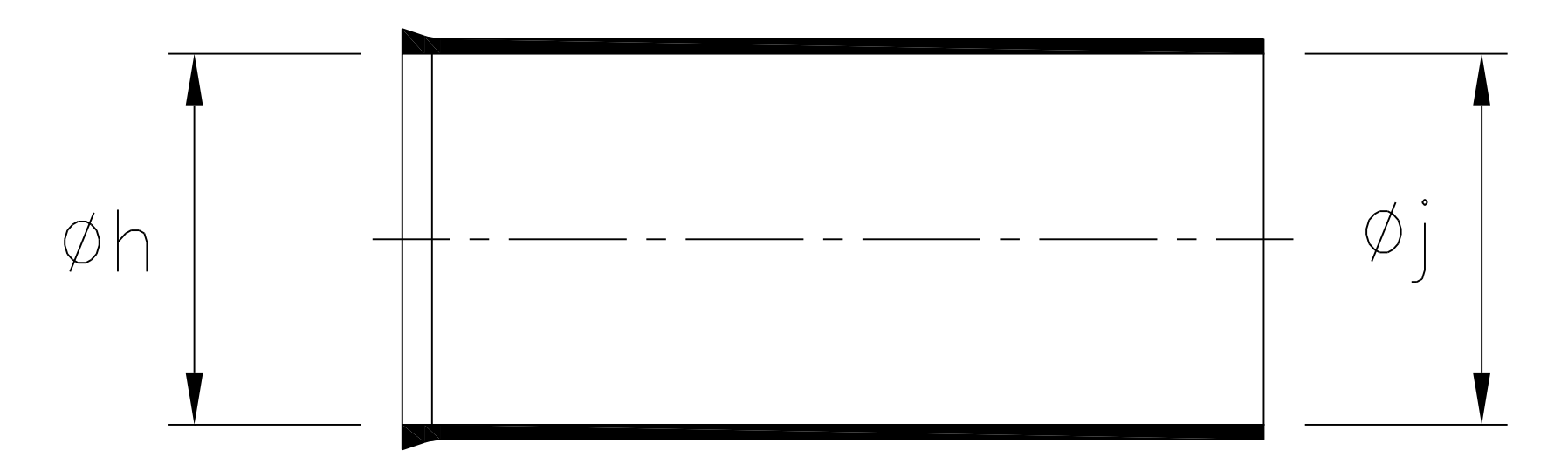
OPTIONS TO STANDARD PART
FILLER PORT/DRAIN HOLE CODE P



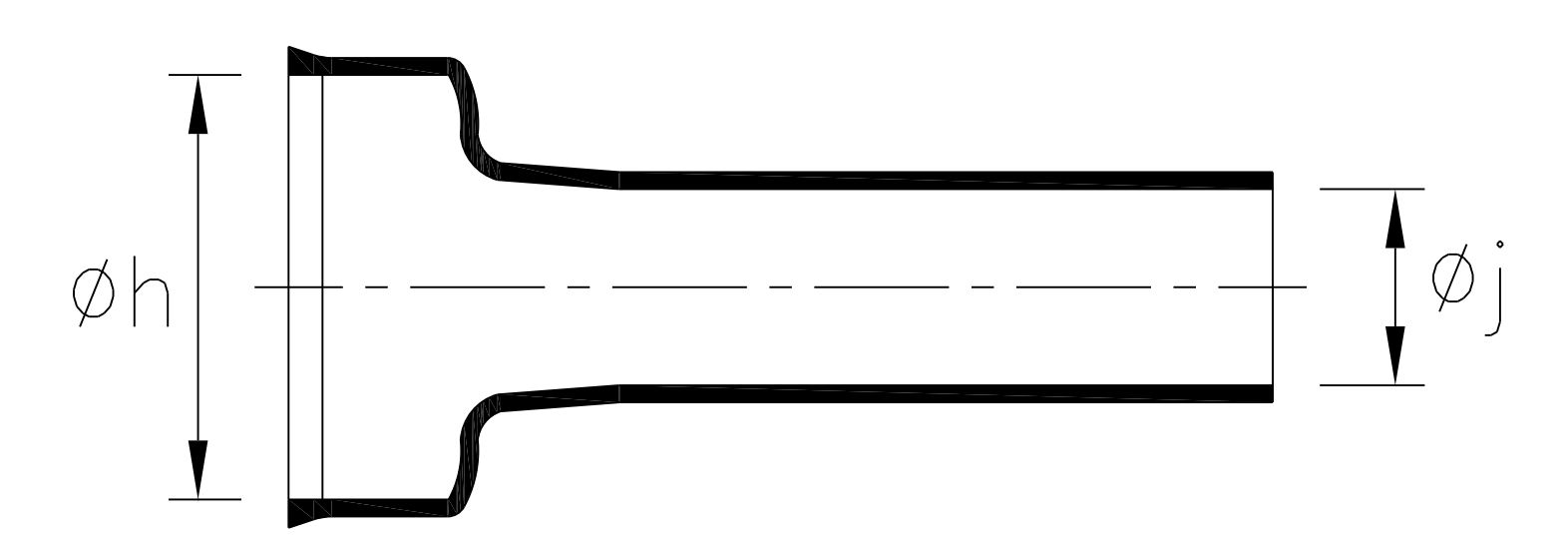
OPTIONS TO STANDARD PART
DRAIN HOLES CODE D



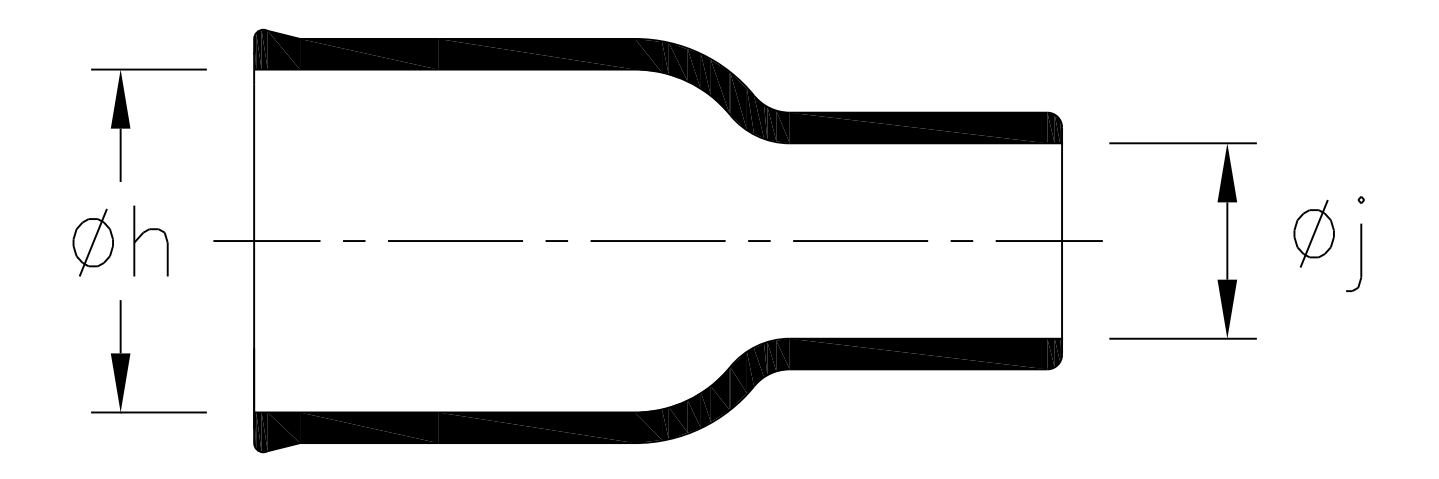
EXPANDED (AS SUPPLIED) 129-1, -2, -4.



EXPANDED (AS SUPPLIED) 129-50, -52



EXPANDED (AS SUPPLIED) 129-48



OPTIONAL
FILLER PORT/DRAIN HOLES DETAIL

SPEC.	PART NO.	EXPANDED DIAMETERS (AS SUPPLIED)		RECOVERED DIAMETERS		RECOVERED DIMENSIONS							
		phi_h	phi_j	phi_H	phi_J	P	R	S	T	V	Hw	Jw	
		MIN	MIN	MAX	MAX	±10%	NOM	NOM	±20%	MAX	±20%	±30%	±20%
VG 95343 T06D001A	129-1	22.0 (.87)	22.0 (.87)	12.0 (.47)	6.5 (.26)	76.0 (2.99)	12.0 (.47)	57.0 (2.24)	1.0 (.04)	3.3 (.13)	1.5 (.06)	1.1 (.04)	-
-	129-2	22.0 (.87)	22.0 (.87)	12.0 (.47)	6.5 (.26)	47.0 (1.85)	12.0 (.47)	28.0 (1.10)	1.0 (.04)	3.3 (.13)	1.5 (.06)	1.1 (.04)	-
MIL SPEC	129-4	22.3 (.88)	22.3 (.88)	11.4 (.45)	6.4 (.25)	105.9 (4.17)	11.7 (.46)	86.9 (3.42)	1.0 (.04)	3.3 (.13)	1.5 (.06)	-	1.1 (.04)
-	129-48	17.0 (.67)	10.0 (.39)	12.0 (.47)	6.5 (.26)	30.0 (1.18)	12.0 (.46)	10.2 (.40)	1.0 (.04)	3.3 (.13)	1.5 (.06)	-	1.1 (.04)
-	129-50	22.0 (.87)	12.7 (.50)	12.0 (.47)	6.5 (.26)	76.0 (2.99)	12.0 (.47)	57.0 (2.24)	1.0 (.04)	3.3 (.13)	1.5 (.06)	1.1 (.04)	-
-	129-52	22.0 (.87)	12.7 (.50)	12.0 (.47)	6.5 (.26)	105.9 (4.17)	12.0 (.47)	86.9 (3.42)	1.0 (.04)	3.3 (.13)	1.5 (.06)	1.1 (.04)	-

SPEC.	PART NO.	RECOVERED DIMENSION	
		X	Y
VG 95343 T07D001A	129-1	-	14 (.55)
-	129-2	-	14 (.55)
MIL SPEC	129-4	5.8 (0.23)	14.2 (0.56)
-	129-48	-	-
-	129-50	-	14 (.55)
-	129-52	5.8 (0.23)	14.2 (0.56)

CODE & TYPE		RECOVERED HOLE DETAILS
P	FILLER PORT/DRAIN HOLE	FILLER PORT = phi_4.5mm NOM (.18) DRAIN HOLE = phi_3.0mm NOM (.12)
D	DRAIN HOLES	ALL 4 HOLES phi_3mm NOM (.12)

Heatshrinkable Moulded Shapes Bulbous Long Outlets HellermannTyton

For information only, not subject to technical changes.

9	P1500	DC	9/3/2015
8	P1459	CB	16/05/14
7	P1416	GB	19/06/13
6	P1394	CM	06/09/12
5	P1342	DJC	10/5/11
ISSUE	NOTE No.	DRAWN	DATE

HellermannTyton
William Prance Road,
Plymouth International Med. & Tech. Park,
Plymouth, PL6 5WR
Tel ++44 (0) 1752 701261
Fax ++44 (0) 1752 790058

NAME	S.Almond	SCALE	NTS
DATE	18/03/08	DIMS IN	mm (in)
TITLE	BOTTLE SLEEVE		

ADHESIVE	A3	SHT. 1
	ORIGINAL SHEET SIZE 420mm x 297mm	OF 1 SHTS.
PART No.	129	DRAWING No.
		152013