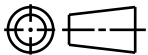
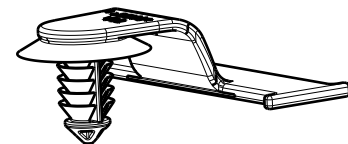
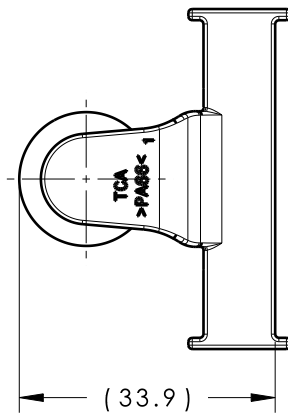


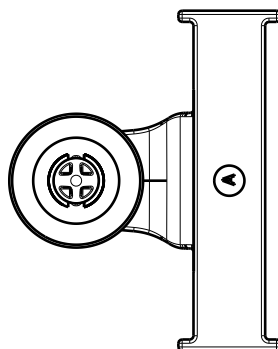
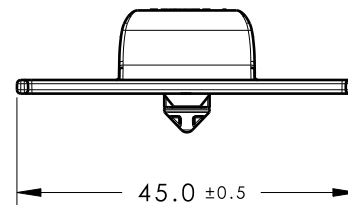
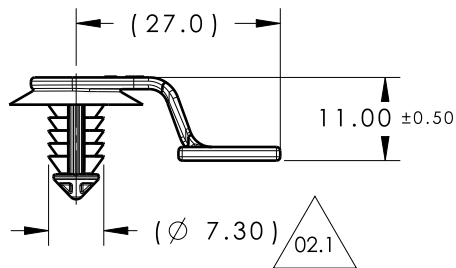
CATIA V5



Revision Level			Revision Record	Changed	Date	Approved	Date
Drawing	State	Part					
02.1	Design Release	A	SEE ECN# 012593	CJR	02/27/14	SJA	02/27/14



ISOMETRIC VIEW



REFERENCE:

PERFORMANCE REQUIREMENTS AT DRY AS MOLDED:

1. FIR TREE PUSH IN FORCE: 45 NEWTONS (10 LBS) MAX IN THE APPLICABLE NOMINAL HOLE SIZE AND A PLATE THICKNESS OF 1.8mm.
2. FIR TREE PULL OUT FORCE: 110 NEWTONS (25 LBS) MIN IN THE APPLICABLE NOMINAL HOLE SIZE AND A PLATE THICKNESS OF 1.8mm.
3. SHEET METAL THICKNESS RANGE: 0.60mm - 6.00mm
4. APPLICABLE HOLE SIZE:
A. 6.5mm +/- 0.4

Material PA66HIRHS COLOR: NATURAL	Units	millimeters	Drawn	CJR	10/08/13	Article/Type-No	SOC14FT6	Scale	1:1
	Tolerance defined on each dimension	The copyright of this drawing is reserved by HellermannTyton. It is issued on condition that it is not reproduced, copied or disclosed to a third party, either wholly or in part, without the consent of HellermannTyton.	Approved	SJA	10/08/13	Title	FT6.5 WITH TAPE BAR (CU5T-14E044-NB)	Project Number	13-0588
			<p>North America Email: corp@htamericas.com Web: www.hellermann.tyton.com</p>			Drawing-No	PRODUCTION : Phase	Format	AH
						13-0588-001-CSU		Sheet	1/1