

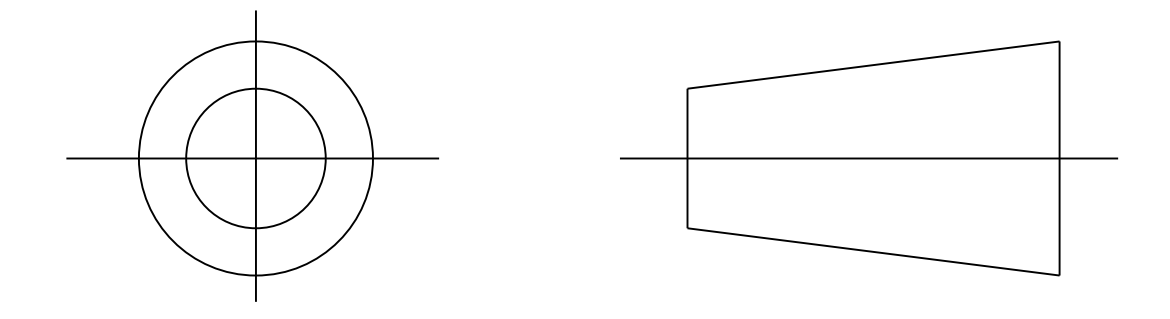
Heatshrinkable Moulded Shapes Bulbous Long Outlets HellermannTyton

DRAWING No.
152017

SHT. 1
OF
1 SHTS.

© THE COPYRIGHT OF THIS DRAWING IS RESERVED BY HELLERMANN TYTON. IT IS ISSUED ON CONDITION THAT IT IS NOT COPIED, REPRODUCED OR DISCLOSED TO A THIRD PARTY EITHER WHOLLY OR IN PART WITHOUT THE CONSENT IN WRITING OF HELLERMANN TYTON.

THIRD ANGLE PROJECTION

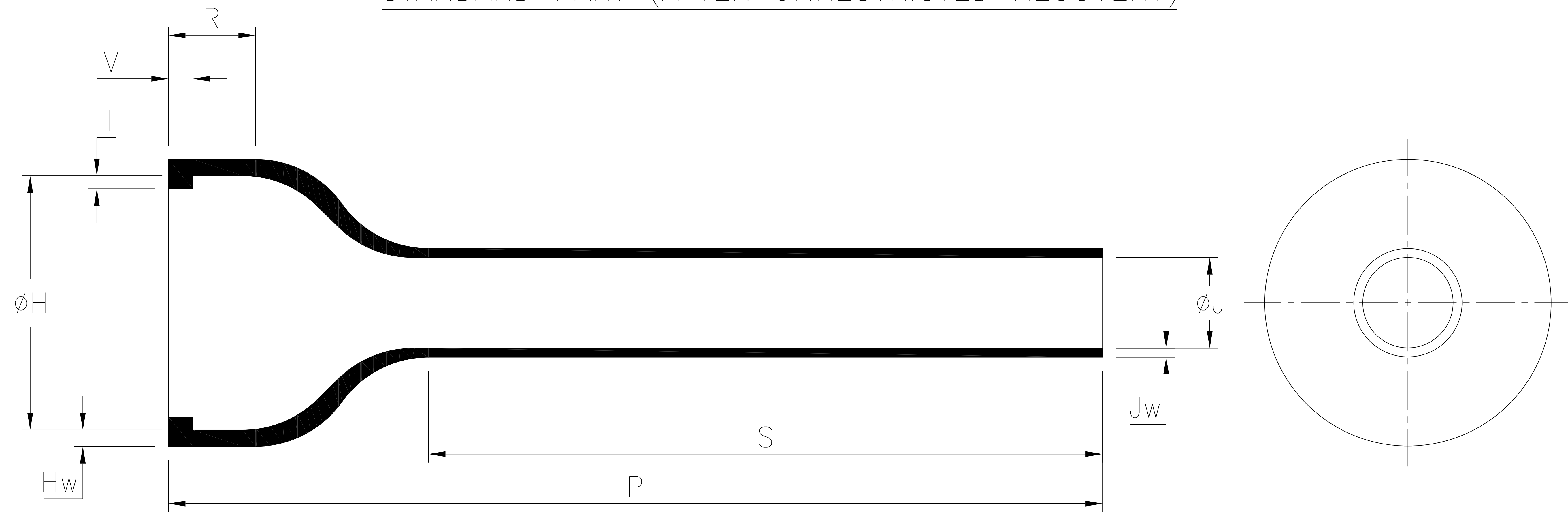


BS 8888

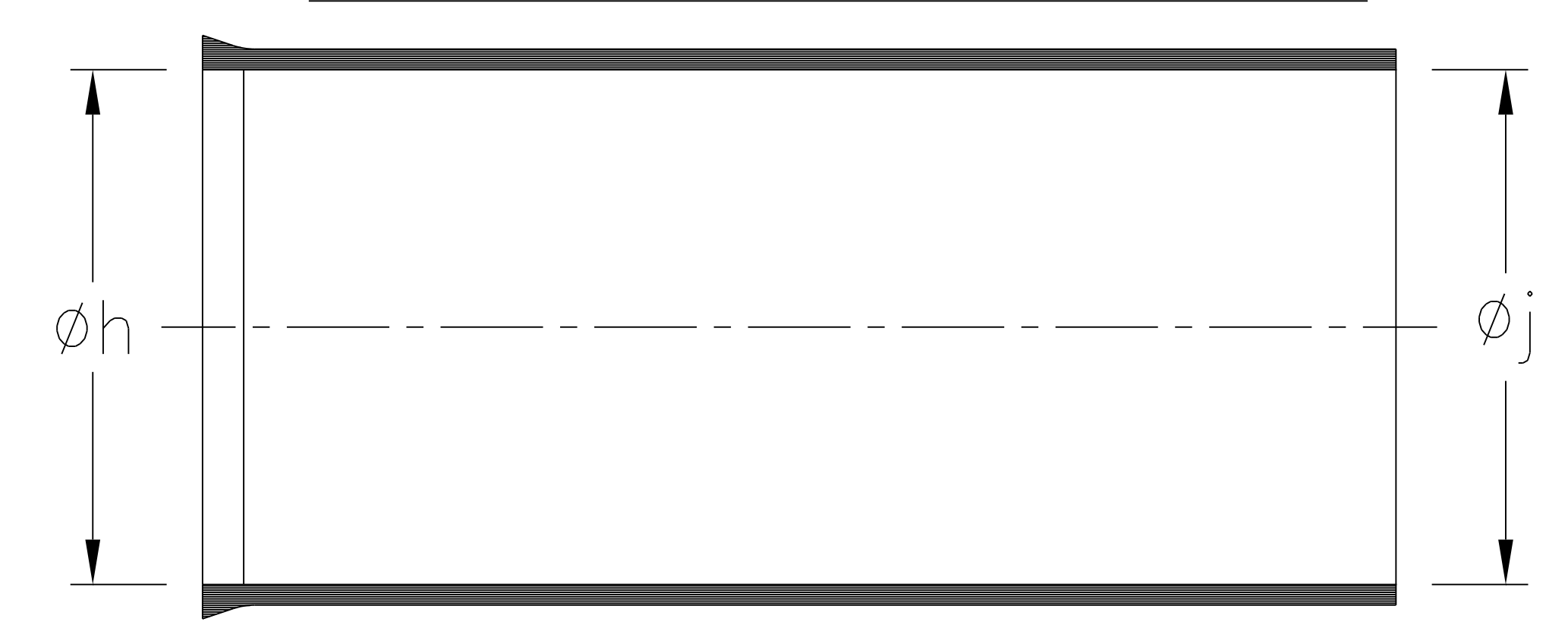
DO NOT SCALE
IF IN DOUBT ASK

Q.A.	H/S SETT
H/S Q.A.	REL. INSP.
H/S PROD	EXT. ISS. CODE

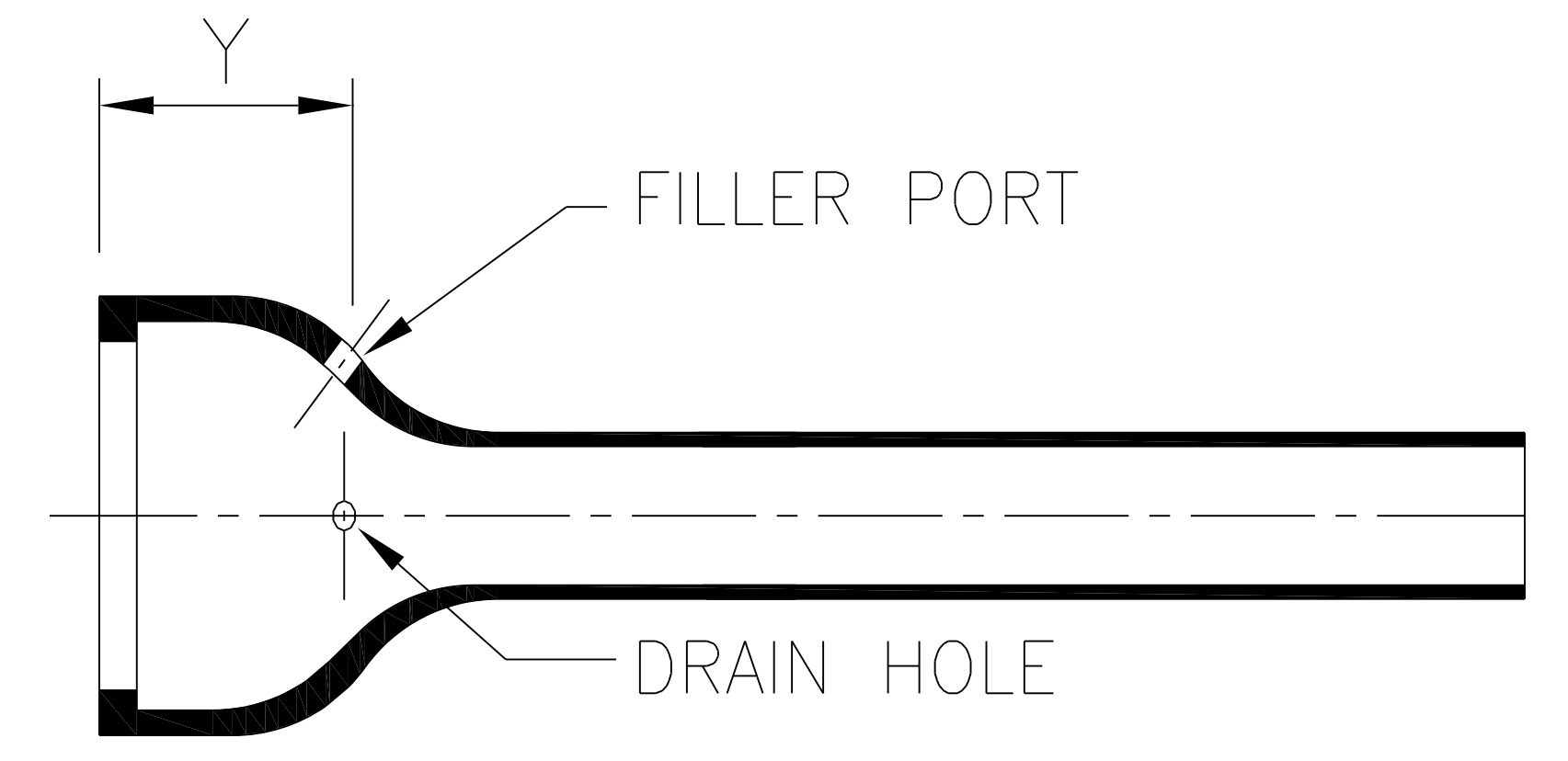
STANDARD PART (AFTER UNRESTRICTED RECOVERY)



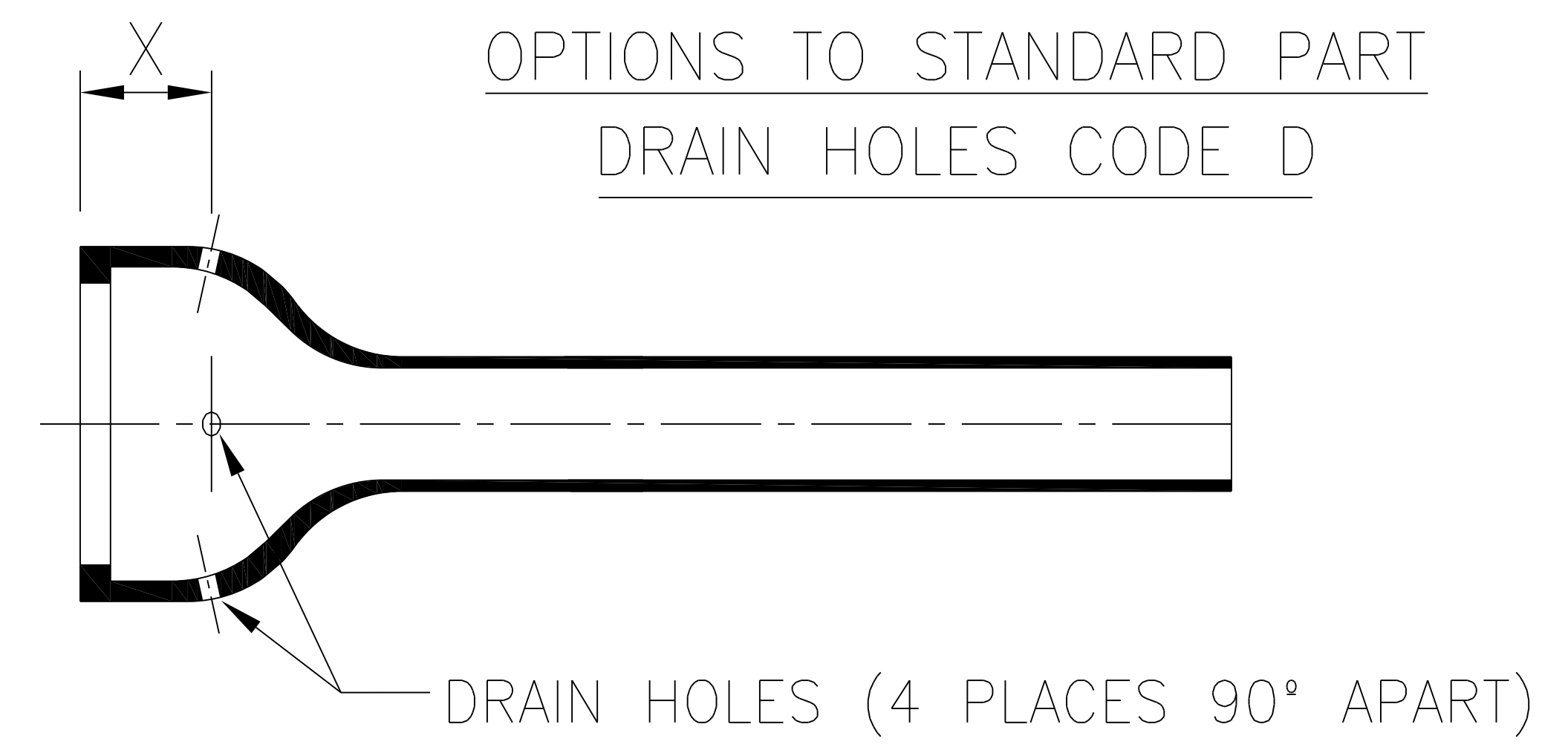
EXPANDED (AS SUPPLIED)



OPTIONS TO STANDARD PART
FILLER PORT/DRAIN HOLE CODE P



OPTIONS TO STANDARD PART
DRAIN HOLES CODE D



SPEC.	PART NO.	EXPANDED DIAMETERS (AS SUPPLIED)		RECOVERED DIAMETERS		RECOVERED DIMENSIONS							
		øh	øj	øH	øJ	P	R	S	T	V	Hw	Jw	
		MIN	MIN	MAX	MAX	±10%	NOM	NOM	±20%	MAX	±20%	±30%	±20%
VG 95343 T06D005A	133-1	37 (1.46)	37 (1.46)	30 (1.18)	11 (.43)	108 (4.25)	14 (.55)	72 (2.83)	1.7 (.065)	3.3 (.13)	2.0 (.08)	1.1 (0.04)	-
-	133-2	37.3 (1.47)	37.3 (1.47)	29.5 (1.16)	10.4 (.41)	47 (1.85)	14 (.55)	11 (.43)	1.7 (.065)	3.3 (.13)	2.0 (.08)	1.1 (0.04)	-
-	133-3	37.3 (1.47)	37.3 (1.47)	29.5 (1.16)	10.4 (.41)	60 (2.36)	14 (.55)	24 (.94)	1.7 (.065)	3.3 (.13)	2.0 (.08)	1.1 (0.04)	-
MIL SPEC	133-4	37.3 (1.47)	37.3 (1.47)	29.5 (1.16)	10.4 (.41)	177.8 (7.00)	14 (.55)	141.8 (5.58)	1.7 (.065)	3.3 (.13)	2.0 (.08)	-	1.1 (0.04)
-	133-8	42.7 (1.68)	42.7 (1.68)	30 (1.18)	11 (.43)	64.3 (2.53)	14 (.55)	28.3 (1.11)	1.7 (.065)	3.3 (.13)	2.0 (.08)	1.1 (0.04)	-
-	*133-43	37 (1.46)	37 (1.46)	30 (1.18)	11 (.43)	71.1 (2.80)	14 (.55)	35.1 (1.38)	1.7 (.065)	3.3 (.13)	2.0 (.08)	1.1 (0.04)	-
-	133-45	37 (1.46)	37 (1.46)	30 (1.18)	11 (.43)	76.2 (3.00)	14 (.55)	40.2 (1.58)	1.7 (.065)	3.3 (.13)	2.0 (.08)	1.1 (0.04)	-
-	133-52	37 (1.46)	20.8 (.82)	30 (1.18)	11 (.43)	177.8 (7.00)	14 (.55)	141.8 (5.58)	1.7 (.065)	3.3 (.13)	2.0 (.08)	1.1 (0.04)	-

OPTIONAL
FILLER PORT/DRAIN HOLES DETAIL

SPEC.	PART NO.	RECOVERED DIMENSION	
		X	Y
		±10%	±10%
VG 95343 T07D005A	133-1	-	18.0 (0.71)
-	133-2	-	18.0 (0.71)
-	133-3	-	18.0 (0.71)
MIL SPEC	133-4	11.9 (0.47)	18.0 (0.71)
-	133-8	-	18.0 (0.71)
-	*133-43	-	18.0 (0.71)
-	133-45	-	18.0 (0.71)
-	133-52	11.9 (0.47)	18.0 (0.71)

CODE & TYPE		RECOVERED HOLE DETAILS
P	FILLER PORT/DRAIN HOLE	FILLER PORT = ø4.5mm NOM (.18) DRAIN HOLE = ø3.0mm NOM (.12)
D	DRAIN HOLES	ALL 4 HOLES ø3mm NOM (.12)

Heatshrinkable Moulded Shapes Bulbous Long Outlets HellermannTyton

For information only, not subject to technical changes.

5	P1500	DC	9/3/2015
4	P1460	CB	21/05/14
3	P1399	CM	03/01/13
2	P1342	DJC	10/05/11
1	P1183	S.Almond	18/03/08
ISSUE	NOTE No.	DRAWN	DATE

HellermannTyton

William Prance Road,
Plymouth International Med. & Tech. Park,
Plymouth, PL6 5WR
Tel ++44 (0) 1752 701261
Fax ++44 (0) 1752 790058

NAME	S.Almond	SCALE	NTS
DATE	18/03/08	DIMS IN	mm (in)
TITLE	BOTTLE SLEEVE		

ADHESIVE	A3	SHT. 1
	ORIGINAL SHEET SIZE 420mm x 297mm	OF 1 SHTS.
PART No.	133	DRAWING No.
		152017