

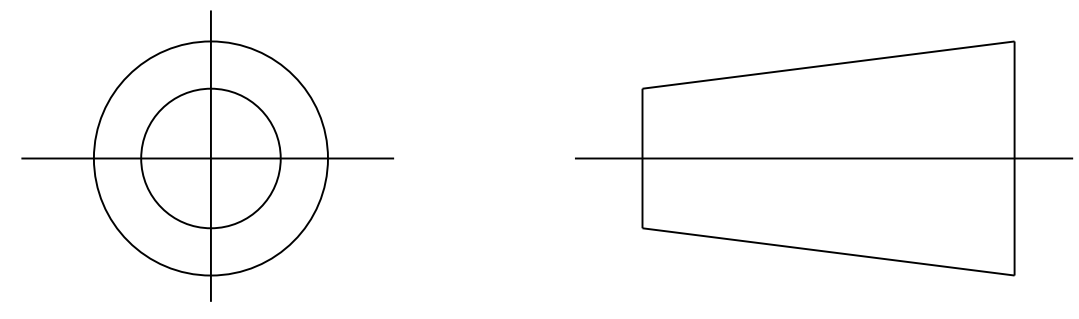
Heatshrinkable Moulded Shapes Bulbous Long Outlets HellermannTyton

DRAWING No.
152020

SHT. 1
OF
1 SHTS.

© THE COPYRIGHT OF THIS DRAWING IS RESERVED BY HELLERMANN TYTON. IT IS ISSUED ON CONDITION THAT IT IS NOT COPIED, REPRODUCED OR DISCLOSED TO A THIRD PARTY EITHER WHOLLY OR IN PART WITHOUT THE CONSENT IN WRITING OF HELLERMANN TYTON.

THIRD ANGLE PROJECTION

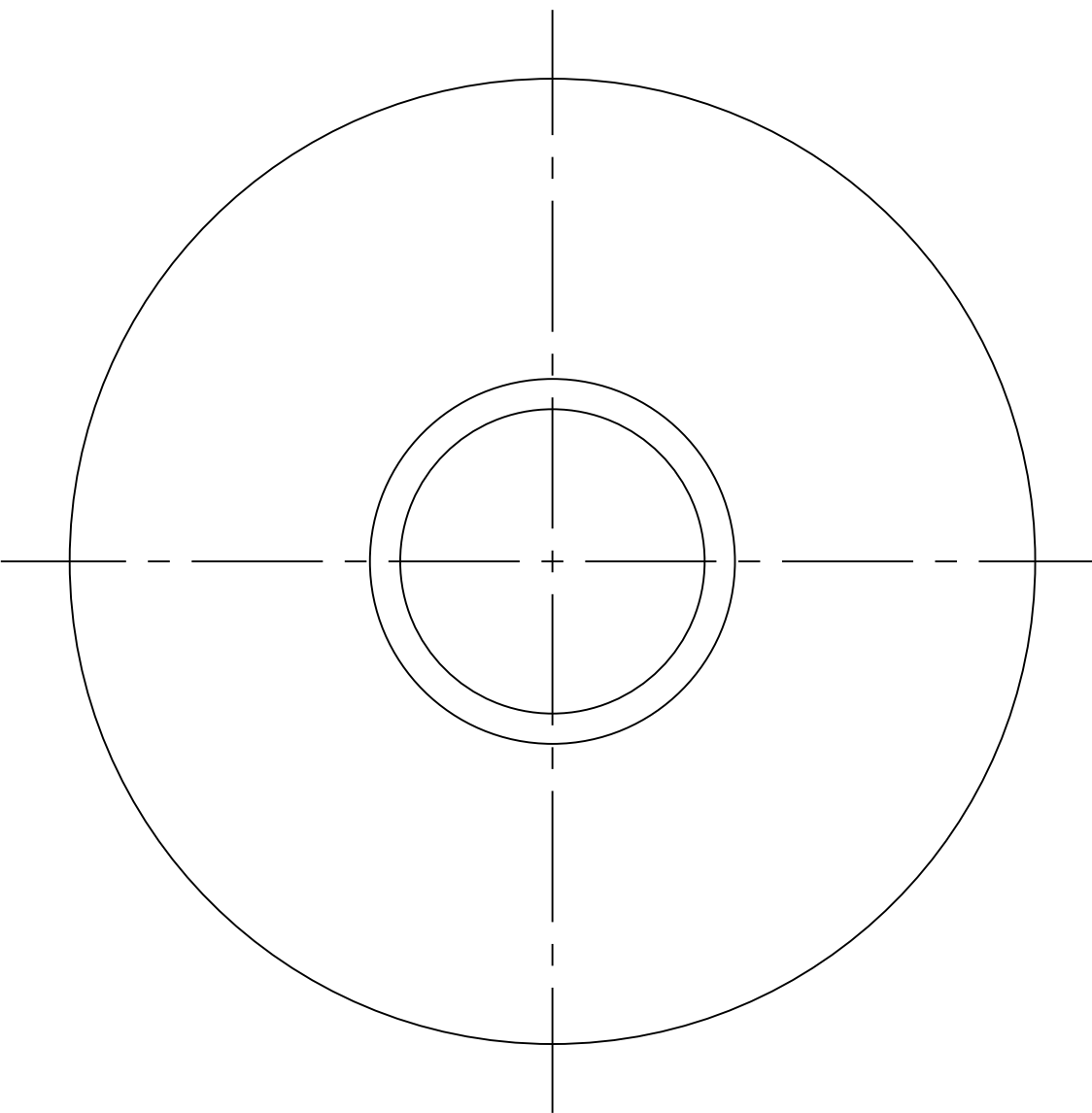
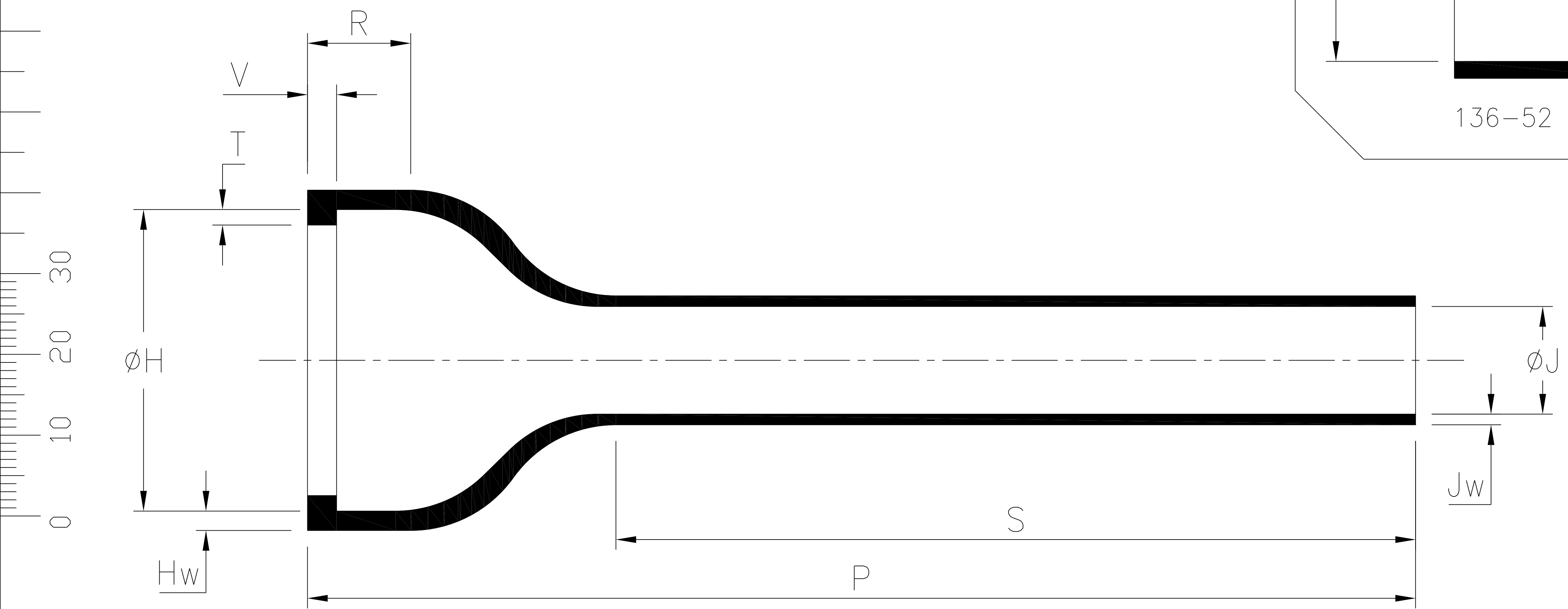
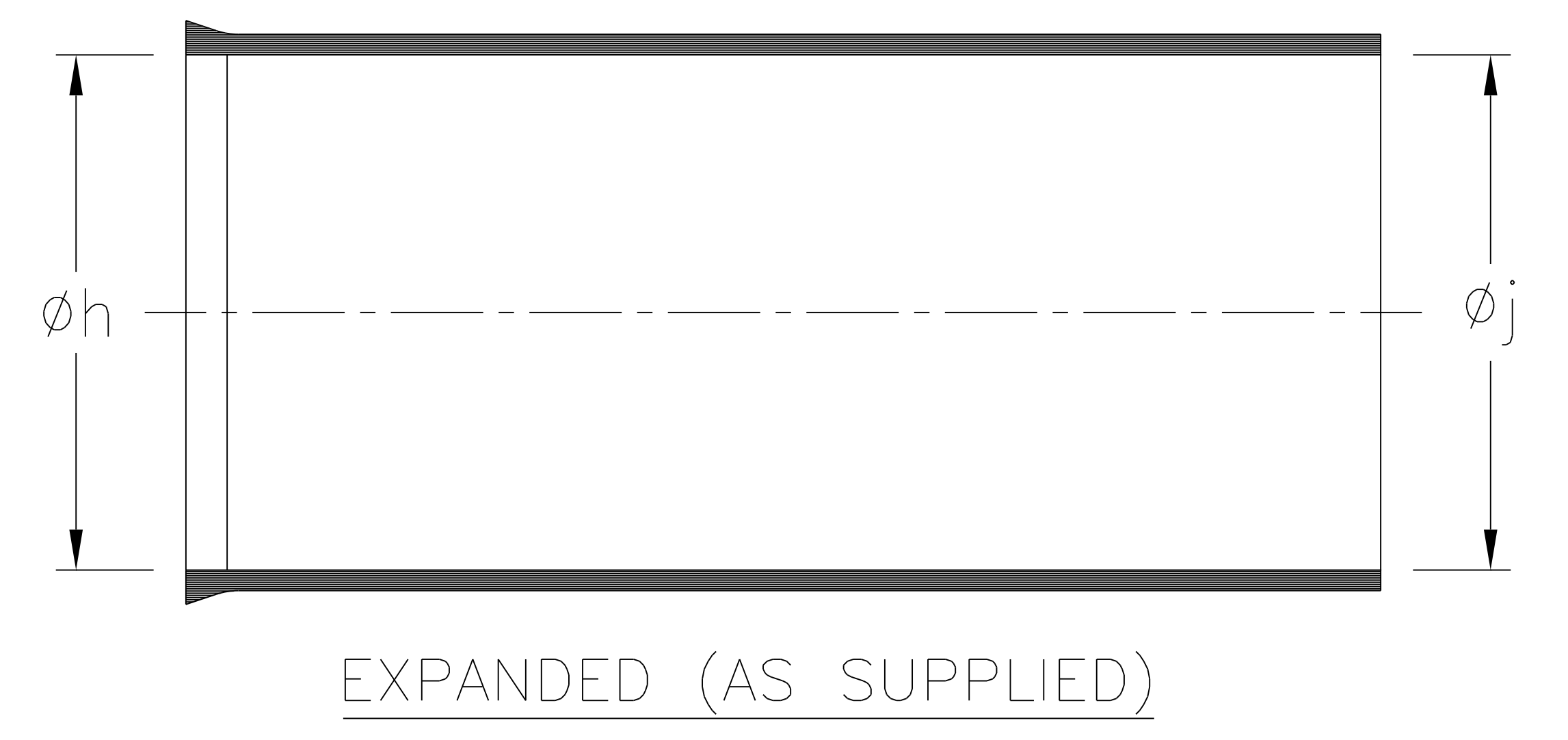
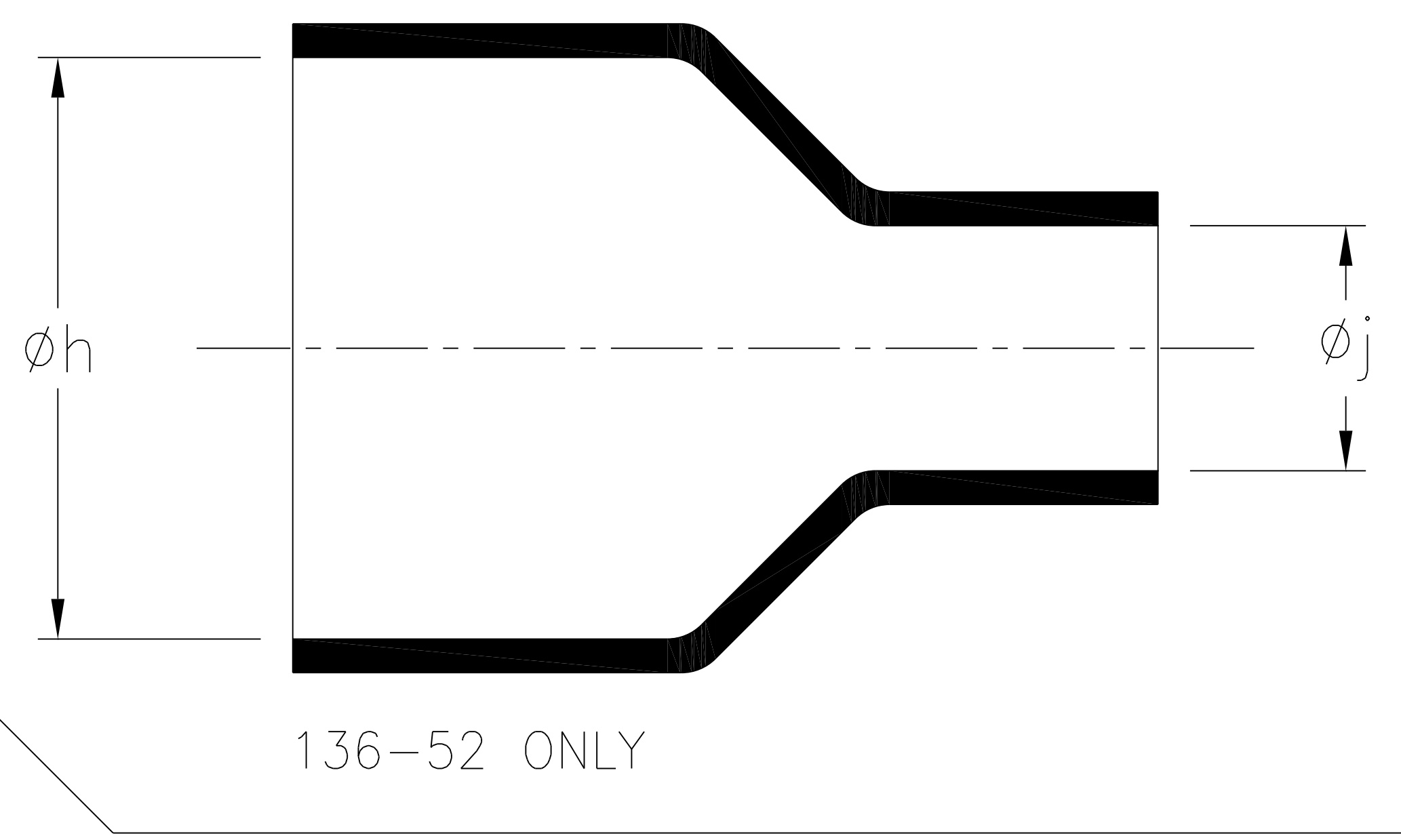


BS 8888

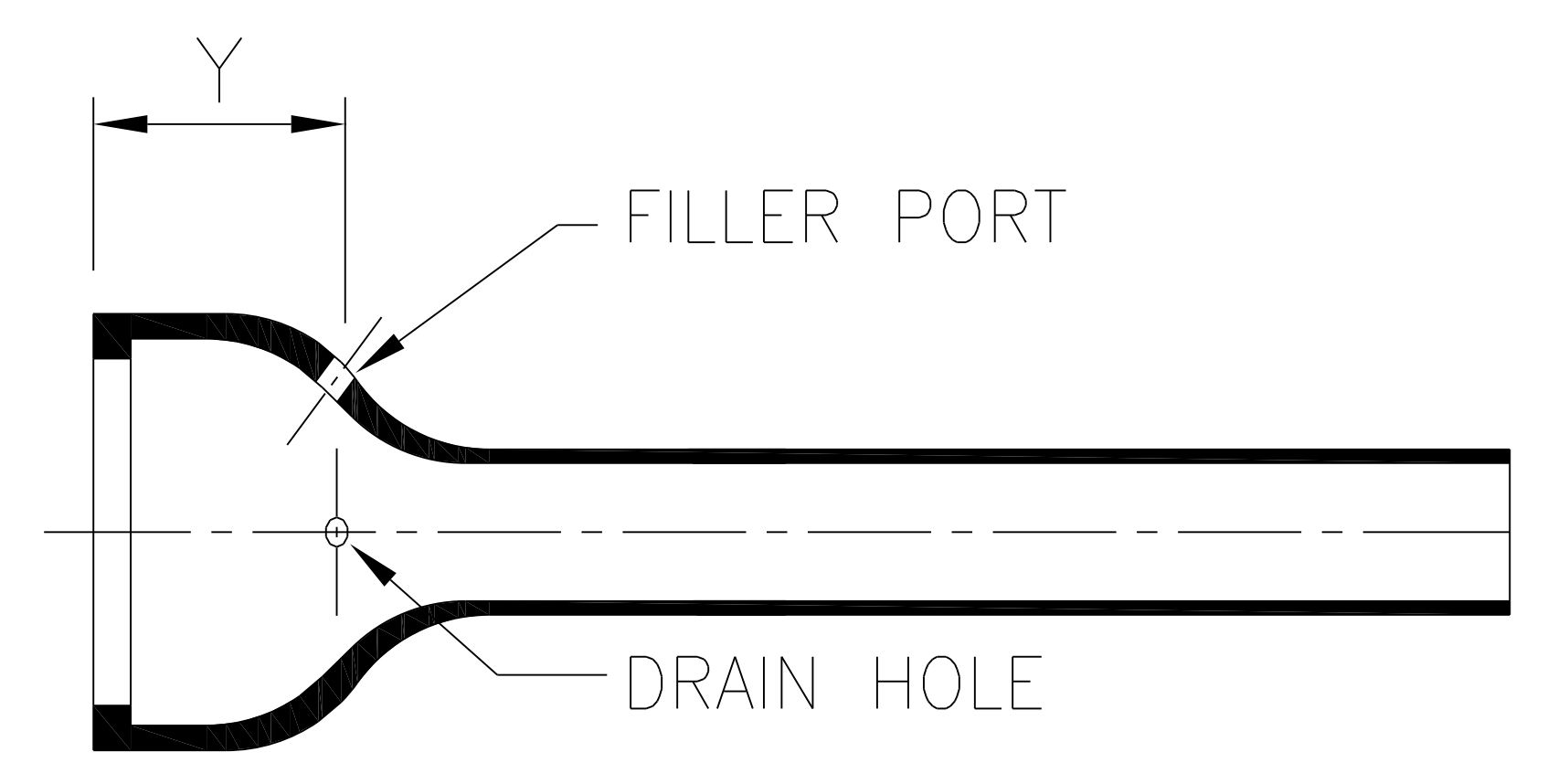
DO NOT SCALE
IF IN DOUBT ASK

Q.A.	H/S SETT
H/S Q.A.	REL. INSP.
H/S PROD	EXT.ISS.CODE

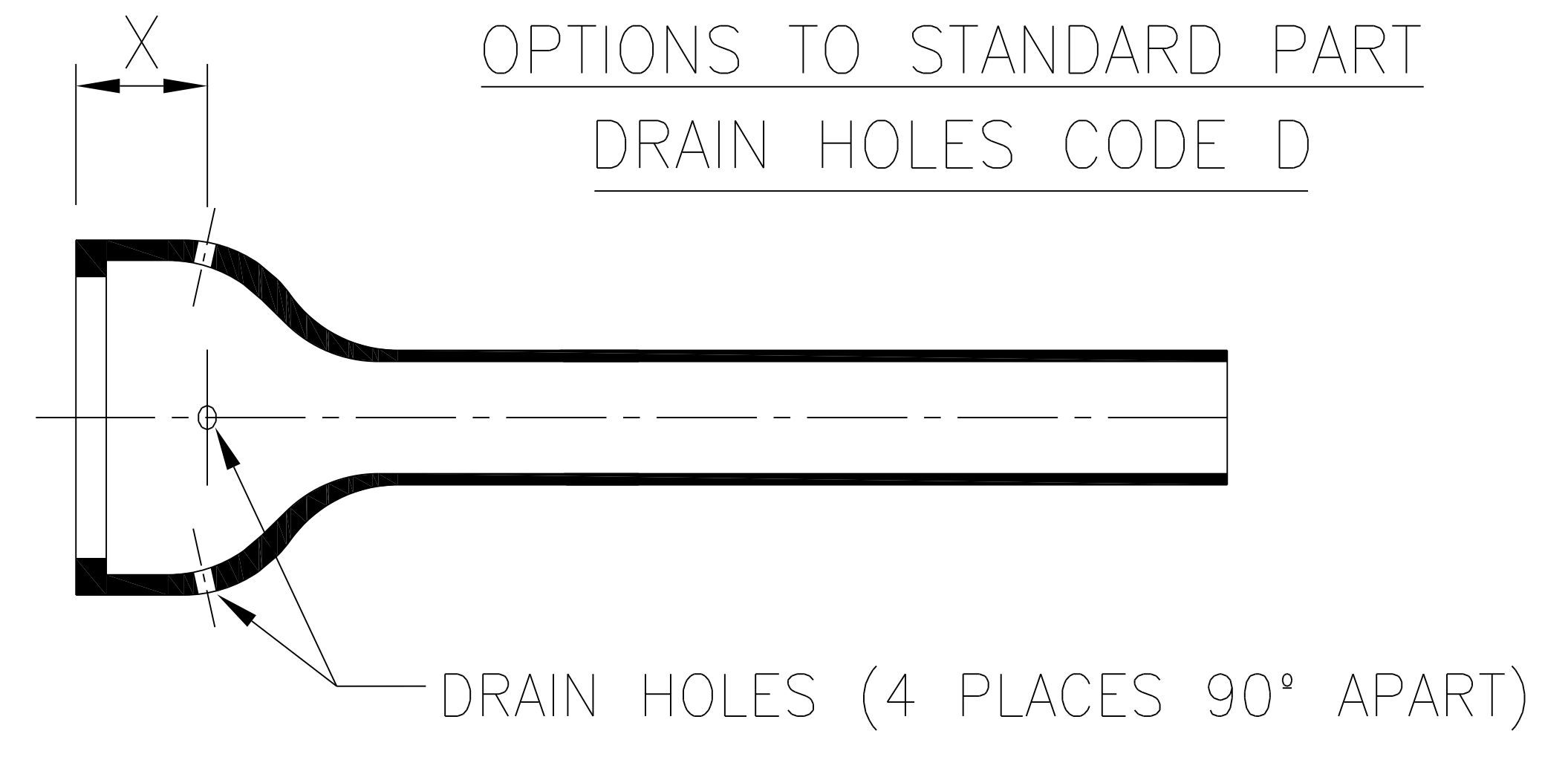
STANDARD PART (AFTER UNRESTRICTED RECOVERY)



OPTIONS TO STANDARD PART
FILLER PORT/DRAIN HOLE CODE P



OPTIONS TO STANDARD PART
DRAIN HOLES CODE D



SPEC.	PART NO.	EXPANDED DIAMETERS (AS SUPPLIED)		RECOVERED DIAMETERS		RECOVERED DIMENSIONS							
		phi_h	phi_j	phi_H	phi_J	P	R	S	T	V	Hw	Jw	
		MIN	MIN	MAX	MAX	±10%	NOM	NOM	±20%	MAX	±20%	±30%	±20%
VG 95343 T06D008A	136-1	62.5 (2.46)	62.5 (2.46)	47 (1.85)	18 (.71)	121 (4.76)	16 (.63)	71 (2.80)	2.0 (.08)	3.3 (.13)	2.5 (.10)	1.4 (.055)	-
-	136-2	70 (2.76)	70 (2.76)	47 (1.85)	17.5 (.69)	125 (4.92)	16 (.63)	75 (2.95)	2.0 (.08)	3.3 (.13)	2.5 (.10)	1.4 (.055)	-
MIL SPEC	136-4	62.7 (2.47)	62.7 (2.47)	47 (1.85)	17.5 (.69)	203.2 (8.00)	16 (.63)	153.2 (6.03)	2.0 (.08)	3.3 (.13)	2.5 (.10)	-	1.4 (.055)
-	136-5	62.5 (2.46)	62.5 (2.46)	47 (1.85)	18 (.71)	76.2 (3.00)	16 (.63)	26.2 (1.02)	2.0 (.08)	3.3 (.13)	2.5 (.10)	1.4 (.055)	-
-	136-52	60.0 (2.36)	37.0 (1.46)	47 (1.85)	17.5 (.69)	203.2 (8.00)	16 (.63)	153.2 (6.03)	2.0 (.08)	3.3 (.13)	2.5 (.10)	-	1.4 (.055)

OPTIONAL FILLER PORT/DRAIN HOLES DETAIL			
SPEC.	PART NO.	RECOVERED DIMENSION	
		X	Y
		±10%	±10%
VG 95343 T07D008A	136-1	-	23 (.91)
-	136-2	-	23.4 (.92)
MIL SPEC	136-4	16.0 (0.63)	23.4 (0.92)
-	136-5	-	23 (.91)
-	136-52	16.0 (0.63)	23.4 (0.92)

CODE & TYPE		RECOVERED HOLE DETAILS
P	FILLER PORT/ DRAIN HOLE	FILLER PORT = phi 4.5mm NOM (.18) DRAIN HOLE = phi 3.0mm NOM (.12)
D	DRAIN HOLES	ALL 4 HOLES phi 3mm NOM (.12)

Heatshrinkable Moulded Shapes Bulbous Long Outlets HellermannTyton

For information only, not subject to technical changes.

6	P1500	DC	9/3/2015
5	P1460	CB	21/05/14
4	P1399	CM	03/01/13
3	P1342	DJC	10/05/11
2	P1298	C.MARSHALL	04/12/09
ISSUE	NOTE No.	DRAWN	DATE

HellermannTyton
William Prance Road,
Plymouth International Med. & Tech. Park,
Plymouth, PL6 5WR
Tel ++44 (0) 1752 701261
Fax ++44 (0) 1752 790058

NAME	S.Almond	SCALE	NTS	ADHESIVE	A3 ORIGINAL SHEET SIZE 420mm x 297mm	SHT. 1 OF 1 SHTS.
DATE	18/03/08	DIMS IN	mm (in)			
TITLE	BOTTLE SLEEVE			PART No.	DRAWING No.	
				136	152020	