



M12 Connector

TE Internal #: 1838274-2

Cable-to-Cable, 4 Position, Sealable, Wire & Cable, Signal, Reverse Gender, Plastic, A Polarization Code, M12 Connector, Standard Circular Connectors

[View on TE.com >](#)

Connectors > Circular Connectors > Standard Circular Connectors



Connector System: **Cable-to-Cable**

Number of Positions: **4**

Sealable: **Yes**

Connector & Contact Terminates To: **Wire & Cable**

Contact Current Rating (Max): **5 A**

Features

Electrical Characteristics

Operating Voltage	500 VAC
-------------------	---------

Packaging Features

Packaging Quantity	50
--------------------	----

Termination Features

Termination Method to Wire & Cable	Solder
------------------------------------	--------

Industry Standards

Compatible With Approved Standards Products	IEC
---	-----

Usage Conditions

IP Water Sealing Level	IP67
Operating Temperature Range	-40 – 85 °C[-40 – 185 °F]

Mechanical Attachment

Mating Retention Type	Threaded
Mating Alignment	With



Polarization Code	A
Mating Alignment Type	Keyed
Mating Retention	With

Body Features

O-Ring Material	EPDM
Environmental Protection	IP67
Environmental Protection Type	Sealed
Primary Product Color	Black
Shell Base Material	Plastic
Circular Connector Insulation Material Type	PA
Hermetically Sealed	Yes

Configuration Features

Keying & Polarized Position Locations	A
Factory Installed Backshell	With
Number of Positions	4
Number of Power Positions	0
Number of Signal Positions	4
Contacts Preloaded	Yes

Product Type Features

Assembly Requirement	Factory Assembled
Circular Connector Shell Type	All Plastic
Connector Product Type	Connector Assembly
Assembly Type	Electrical Connector
Prewired	No
Connector System	Cable-to-Cable
Sealable	Yes
Connector & Contact Terminates To	Wire & Cable
Circular Connector Type	Receptacle
Shell Type	Plastic

Contact Features

Contact Current Rating (Max)	5 A
Reverse Gender	Yes
Circular Connector Contact Type	Socket



Housing Features

Circular Connector Shell Size	15
-------------------------------	----

Dimensions

Wire Size	22 – 20 AWG
-----------	-------------

Operation/Application

Circuit Application	Signal
Shielded	No

Other

EU RoHS Compliance	Compliant with Exemptions
EU ELV Compliance	Not Compliant

Product Compliance

[For compliance documentation, visit the product page on TE.com>](#)

EU RoHS Directive 2011/65/EU	Compliant with Exemptions
EU ELV Directive 2000/53/EC	Not Compliant
China RoHS 2 Directive MIIT Order No 32, 2016	Restricted Materials Above Threshold
EU REACH Regulation (EC) No. 1907/2006	Current ECHA Candidate List: JUNE 2024 (241) Candidate List Declared Against: JUNE 2024 (241) Does not contain REACH SVHC
Halogen Content	Low Bromine/Chlorine - Br and Cl < 900 ppm per homogenous material. Also BFR /CFR/PVC Free
Solder Process Capability	Hand solderable with lead free solder

Product Compliance Disclaimer

This information is provided based on reasonable inquiry of our suppliers and represents our current actual knowledge based on the information they provided. This information is subject to change. The part numbers that TE has identified as EU RoHS compliant have a maximum concentration of 0.1% by weight in homogenous materials for lead, hexavalent chromium, mercury, PBB, PBDE, DBP, BBP, DEHP, DIBP, and 0.01% for cadmium, or qualify for an exemption to these limits as defined in the Annexes of Directive 2011/65/EU (RoHS2). Finished electrical and electronic equipment products will be CE marked as required by Directive 2011/65/EU. Components may not be CE marked. Additionally, the part numbers that TE has identified as EU ELV compliant have a maximum concentration of 0.1% by weight in homogenous materials for lead, hexavalent chromium, and mercury, and 0.01% for cadmium, or qualify for an exemption to these limits as defined in the Annexes of Directive 2000/53/EC (ELV). Regarding the REACH Regulation, the information TE provides on SVHC in articles for this part number is based on the latest European Chemicals Agency (ECHA) 'Guidance on requirements for substances in articles' posted at this URL: <https://echa.europa.eu/guidance-documents/guidance-on-reach>



Compatible Parts

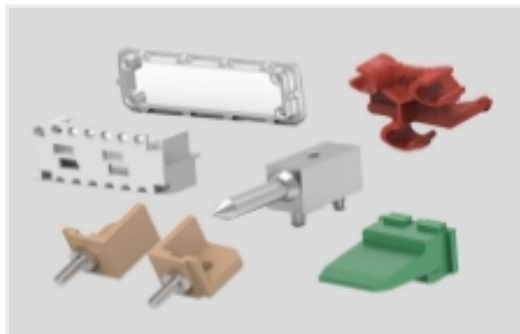


TE Part # T4110001041-000
M12, FEMALE, STRAIGHT, A CODE, 4P, PG7, GOLD



TE Part # 1838275-2
M12 Fld Ser CONN. Male Pin Sldr

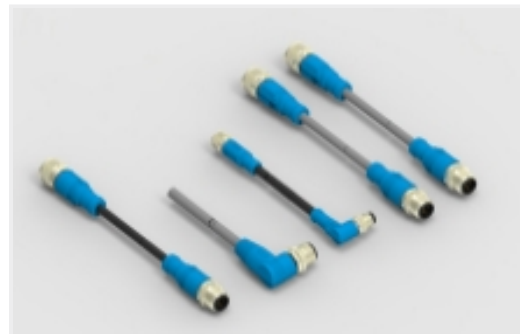
Also in the Series | M12 Connector



Connector Hardware(11)



Connector Seals & Cavity Plugs(4)



M8/M12 Cable Assemblies(230)



Standard Circular Connectors(793)

Customers Also Bought



TE Part #5745183-7
09 RCPT SP/MS STD



TE Part #1903122-1
DYNAMIC D1000 TAB CONT TIN (2L) REEL



TE Part #6-104549-0
100 SYS50 S/M HDR DRST SHRDSN



TE Part #926824-1
AM WIRE PIN 17-13 .013 BR



TE Part #1838274-3
M12 Fld Ser CONN. Female Skt S



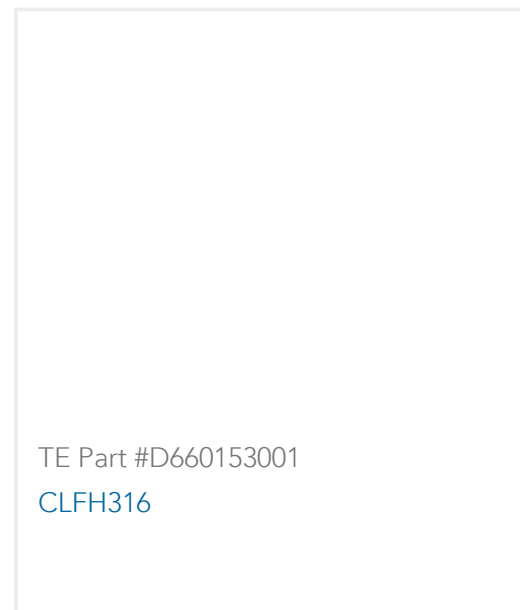
TE Part #1838275-2
M12 Fld Ser CONN. Male Pin Sldr



TE Part #1838891-3
M12 Mtl FEMALE PNL CONN. Sldr Rear (Hex)



TE Part #1838893-3
M12 Mtl MALE PNL CONN. Sldr Re



Documents

Product Drawings

[M12 Fld Ser CONN. Female Skt Sldr](#)

English

CAD Files

Customer View Model

[ENG_CVM_CVM_1838274-2_C.2d_dxf.zip](#)

English

[3D PDF](#)

3D

Customer View Model

[ENG_CVM_CVM_1838274-2_C.3d_igs.zip](#)

English

Customer View Model

[ENG_CVM_CVM_1838274-2_C.3d_stp.zip](#)

English

By downloading the CAD file I accept and agree to the [Terms and Conditions](#) of use.

Datasheets & Catalog Pages

[M8 / M12 Connector System Catalog](#)

English

Product Specifications

[Application Specification](#)

English