

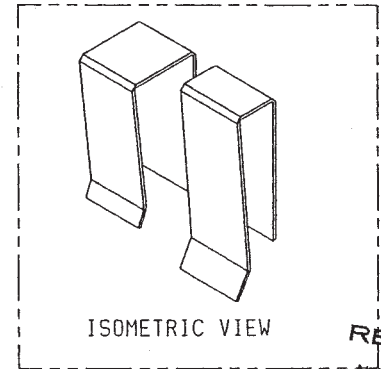
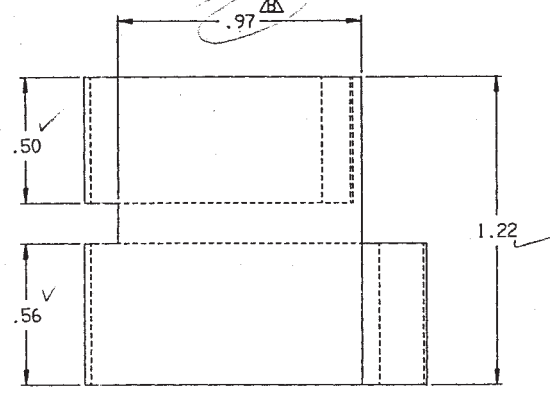
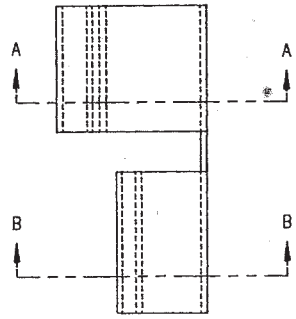
MASTER REFERENCE

4901

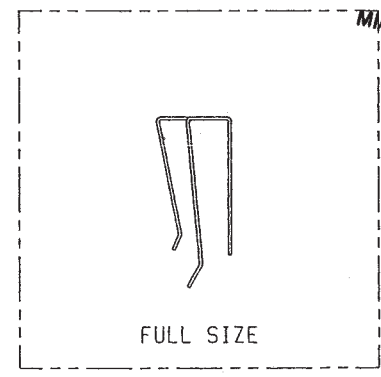
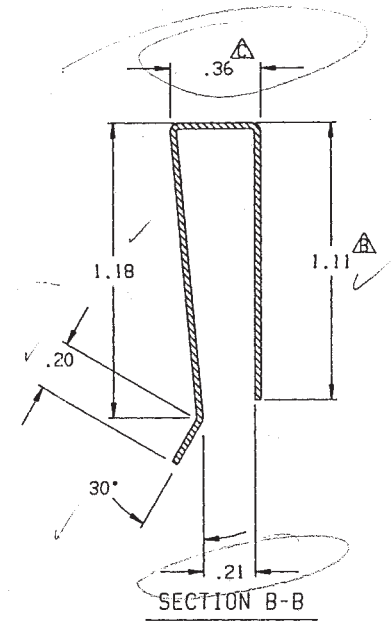
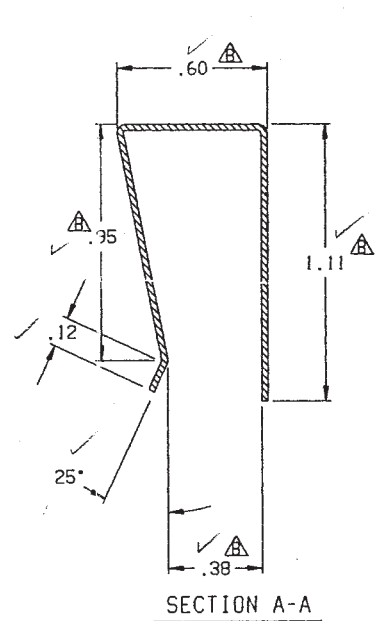
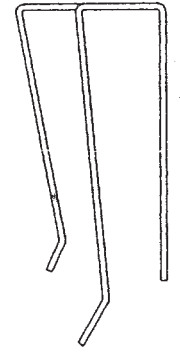
2001-343 ON

7-17-00 6W

LTR	ECO NO.	REVISION	ENG.	DATE
A	910814	RELEASED	M.M.	8/15/91
B	10636	.95, .38, .60, .111 RESOURCES 1-26-93, REVISIONS 1, 2, 3, 4, 5, 6, 7, 8, 9, 10, 11, 12, 13, 14, 15, 16, 17, 18, 19, 20, 21, 22, 23, 24, 25, 26, 27, 28, 29, 30, 31, 32, 33, 34, 35, 36, 37, 38, 39, 40, 41, 42, 43, 44, 45, 46, 47, 48, 49, 50, 51, 52, 53, 54, 55, 56, 57, 58, 59, 60, 61, 62, 63, 64, 65, 66, 67, 68, 69, 70, 71, 72, 73, 74, 75, 76, 77, 78, 79, 80, 81, 82, 83, 84, 85, 86, 87, 88, 89, 90, 91, 92, 93, 94, 95, 96, 97, 98, 99, 100	M.M.	1/23/92
C	16116	.36 WAS .33	P.S.	11/16/93



RECEIVED
NOV 24 1993
MIAMI MFG.



NOTES:

1. MATERIAL: .025 TH'K. 304 STAINLESS STEEL, FULL HARD.
2. FINISH: PASSIVATE.
3. BEND RADIUS: MIN TO .02 MAX.

NOV 16 1993

2001	1
MODEL	NEXT ASSEMBLY
USED ON	QTY

DO NOT SCALE THIS DRAWING	DIMENSIONAL TOLERANCES UNLESS OTHERWISE SPECIFIED	DATE 1/20/91	SCALE 2:1	TITLE
Keithley Instruments Inc. Cleveland, Ohio 44139	XX = ± .015 ANG. = ± 1°	DRN. P.S.	ENG. APPR. M.M.	CLIP, REGULATOR
	XXX = ± .005 FRAC. = ± 1/64	MATERIAL	SEE NOTE 1	SIZE
	SURFACE MAX. ✓ 63	FINISH	SEE NOTE 2	NO. 2001-343

A 1000 102770 REV. D B C ↑ D E F

DRAWING SHEET