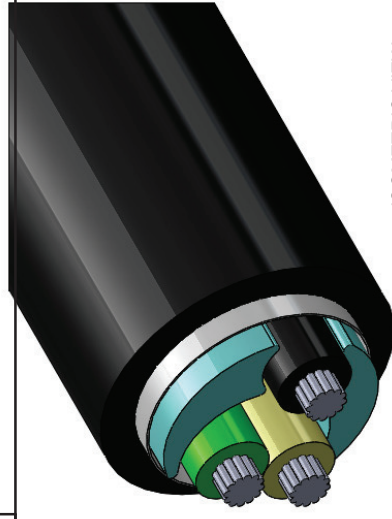
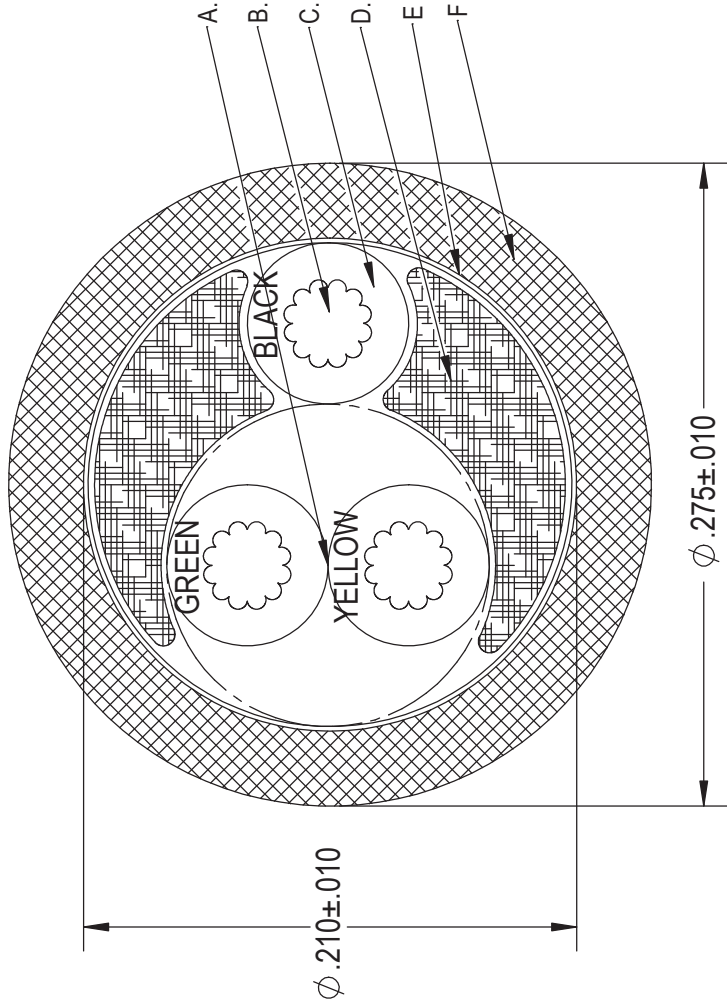


This document contains proprietary and confidential information of Northwire, Inc. (and its subsidiary) and shall not be used, disclosed or reproduced, in whole or in part, for any purpose without the prior written consent of Northwire, Inc. (and its subsidiary).  
 Disclaimer: The technical data that is made part of this document may be subject to the International Traffic in Arms Regulation (ITAR) and the Export Administration Regulations (EAR). Disclosure of technical data to Foreign Persons in the course of employment with U.S. contractors is considered an export and is subject to the ITAR and EAR export licensing requirements/regulations.

DESCRIPTION: 20/3 105C 300V CABLE (OPERATING TEMP -40c TO 105c) UNITS: IN SCALE: 12:1 ITEM SPECIFICATIONS

CUSTOMER: NovAtel NWI P/N: FCAB203-047 DWG NO: 55632-1  
 CUSTOMER P/N: TBD DRAWN BY: MKAMISH DATE: 4/14/2015 REV: A

ITEM	SPECIFICATIONS
A.	20 AWG TWISTED PAIR
B.	20 AWG 19x.0073" TC STRANDING OD .0347+/- .0007"
C.	16 MILS XLPE INSULATION 14 MILS MIN. XLPE INSULATION OD .070+/- .002"
D.	POLY FILLER
E.	OPAQUE MYLAR WRAP
F.	30 MILS PRESSURED TPE JACKET 24 MILS MIN. TPE JACKET JACKET COLOR: BLACK  NO AGENCY APPROVALS ROHS COMPLIANT MATERIALS TO EU DIRECTIVE 2011/65/EU



LEGEND SPECIFICATIONS: NONE



This document contains proprietary and confidential information of Northwire, Inc. (and its subsidiary) and shall not be used, disclosed or reproduced, in whole or in part, for any purpose without the prior written consent of Northwire, Inc. (and its subsidiary).

Disclaimer: The technical data that is made part of this document may be subject to the International Traffic in Arms Regulation (ITAR) and the Export Administration Regulations (EAR). Disclosure of technical data to Foreign Persons in the course of employment with U.S. contractors is considered an export and is subject to the ITAR and EAR export licensing requirements/regulations.

DESCRIPTION: 20/3 105C 300V CABLE (OPERATING TEMP -40c TO 105c)

CUSTOMER: NovAtel

CUSTOMER P/N: TBD

NWI P/N: FCAB203-047

DRAWN BY: MKAMISH

UNITS: IN SCALE: 60:1

DWG NO: 55632-1

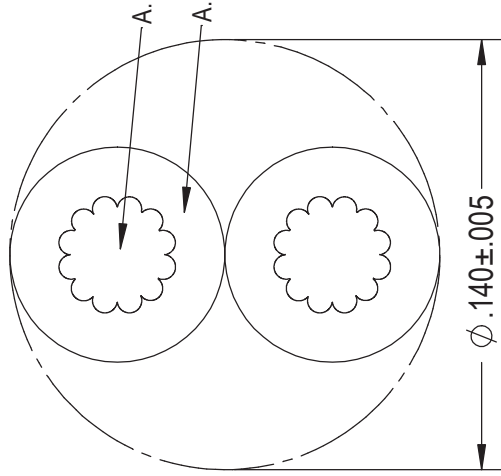
DATE: 4/14/2015

REV: A

ITEM SUB-ASSEMBLY SPECIFICATIONS

A. 20 AWG 19x.0073" TC STRANDING  
OD .0347+/- .0007"

B. 16 MILS XLPE INSULATION  
14 MILS MIN XLPE INSULATION  
OD .070+/- .002"





DESCRIPTION: 20/3 105C 300V CABLE (OPERATING TEMP -40c TO 105c)

CUSTOMER: NovAtel

CUSTOMER P/N: TBD

NWI P/N: FCAB203-047

DRAWN BY: MKAMISH

UNITS: IN SCALE: 60:1

DWG NO: 55632-1

DATE: 4/14/2015 REV: A

ELECTRICAL REQUIREMENTS

GREEN YELLOW PAIR  
IMPEDANCE - 120 OHMS NOMINAL

MECHANICAL REQUIREMENTS

NONE SPECIFIED



REVISIONS			
INITIAL RELEASE	A	4/14/15	MK
REVISION RECORD	REV.	REV DATE	APR

This document contains proprietary and confidential information of Northwire, Inc. (and its subsidiary) and shall not be used, disclosed or reproduced, in whole or in part, for any purpose without the prior written consent of Northwire, Inc. (and its subsidiary).

Disclaimer: The technical data that is made part of this document may be subject to the International Traffic in Arms Regulation (ITAR) and the Export Administration Regulations (EAR). Disclosure of technical data to Foreign Persons in the course of employment with U.S. contractors is considered an export and is subject to the ITAR and EAR export licensing requirements/regulations.