

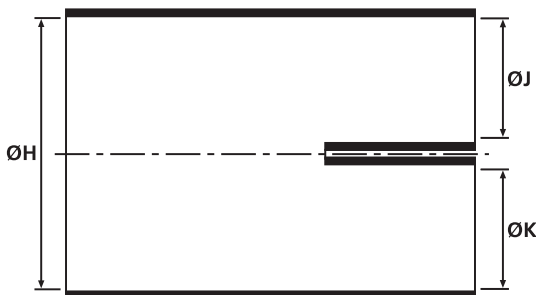
### 2-Way Outlet Shapes

- Helashrink 200 Series, low profile

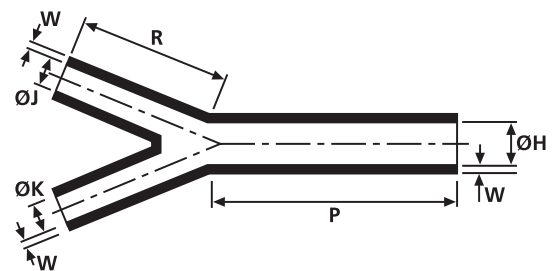
Branching parts are employed for mechanical tension relief in harnesses, where multi core cables are required to be routed out in different directions. High ratio expansion allows for quick and easy installation times.



203-1-G supplied / fully recovered.



a: Expanded form (supplied)



b: Fully recovered form (after heating)

For Material / Adhesive selection and other information please refer to page 10.

Sizes and Type Table

Type	ØH min. a	ØH max. b	ØJ min. a	ØJ max. b	ØK min. a	ØK max. b	P ± 10%	R ± 10%	W ± 20%
201-1	19.0	9.4	6.4	14.0	6.4	14.0	50.8	30.5	1.5
201-3	24.5	9.4	14.0	6.4	14.0	6.4	50.8	30.5	1.5
202-1	19.0	9.4	7.6	3.8	7.6	3.8	50.8	30.5	1.5
202-2	20.0	9.4	12.5	3.8	12.5	3.8	50.8	30.5	1.5
202-3	24.5	9.4	16.0	3.8	16.0	3.8	50.8	30.5	1.5

All dimensions in mm. Subject to technical changes.

Combinations "On request"

Adhesive	Material				
	B7	G	J	H	B8
WM250	√	√	√	√	√
W8	√	√	√	√	-
W24	√	√	√	√	-
V9500	√	√	√	-	-
HMT200A	√	√	√	-	√
W21	-	-	-	-	-
Without Adhesive	√	√	√	√	√

Standard combinations

Article-No.	Type
402-01180	201-1-G
402-01020	201-3-G
402-02004	202-1-G
402-02011	202-2-G
402-02019	202-3-G