

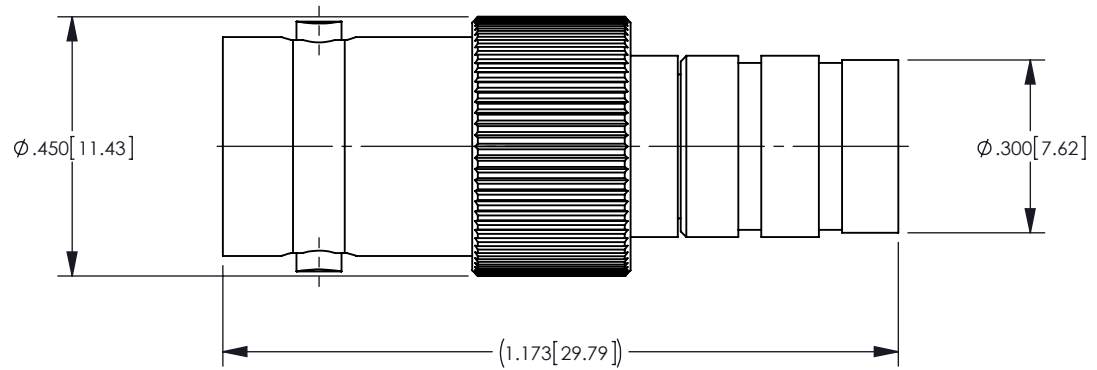
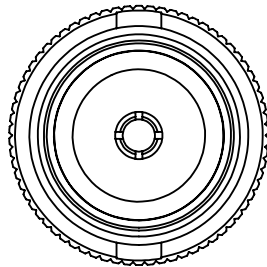
NOTES: UNLESS OTHERWISE SPECIFIED
 1. FOR GENERAL SERIES SPECIFICATIONS, SEE SDPRF-206.

2. MATERIAL SPECIFICATIONS:
 BODY: BRASS PER ASTM B16
 INSULATOR: TEFLON PER ASTM D1710
 CONTACT, OUTER CONDUCTOR: COPPER ALLOY

3. FINISH SPECIFICATIONS:
 CONTACT, OUTER CONDUCTOR: .000030 MIN. GOLD PER ASTM B488, OVER .000080 MIN NICKEL PER AMS-QQ-N-290 (ROHS)
 ALL OTHER METAL PARTS: .000100MIN NICKEL PER AMS-QQ-N-290 OVER COPPER FLASH PER ASTM B734 (ROHS)

4. ELECTRICAL SPECIFICATIONS:
 IMPEDANCE: 75 OHMS
 FREQUENCY RANGE: DC TO 3 GHz
 RETURN LOSS: 25 dB MIN

REV	DESCRIPTION	BY DATE	APPD
A	RELEASED DRAWING PER ER041905	COL 08/09/11	DCam



CATALOG P/N:206G-034-00002N

PER ASME Y14.5M-1994 UNLESS OTHERWISE SPECIFIED: DIMENSIONS ARE IN INCHES [MM] TOLERANCES: DECIMAL: .XX [X.X] ± .01 [0.3] .XXX [X.XX] ± .005 [0.13] .XXXX [X.XXX] ± .XXXX ANGLES: ± 2° SCALE: X:X				 by WINCHESTER <small>ELECTRONICS</small> Winchester Electronics Corporation 62 Barnes Industrial Road North Wallingford, Connecticut 06492	
CUSTOMER SALES DRAWING			THIRD ANGLE		75 OHM BNC FEMALE TO DIN 1.0/2.3 MALE ADAPTOR (ROHS)
DRAWN	DATE	APPROVED	DATE	DATE	
COL	08/09/11	DCam	08/18/11		
APPROVED	DATE	APPROVED	DATE		
XXX	XX/XX/XX	XXX	XX/XX/XX		
A SD206G-034-00002N				SHT OF 1 1	REV A