

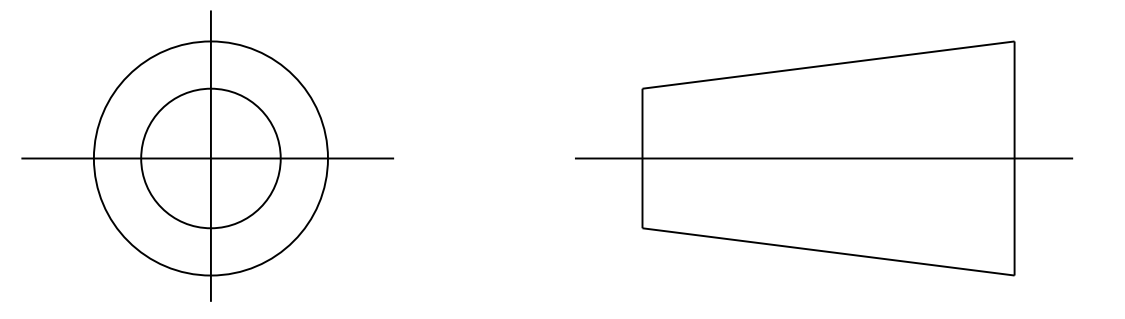
Heatshrinkable Moulded Shapes Bulbous Boots 2-Way Outlet HellermannTyton

DRAWING No.
152276

SHT. 1
OF
1 SHTS.

© THE COPYRIGHT OF THIS DRAWING IS RESERVED BY HELLERMANN TYTON. IT IS ISSUED ON CONDITION THAT IT IS NOT COPIED, REPRODUCED OR DISCLOSED TO A THIRD PARTY EITHER WHOLLY OR IN PART WITHOUT THE CONSENT IN WRITING OF HELLERMANN TYTON.

THIRD ANGLE PROJECTION



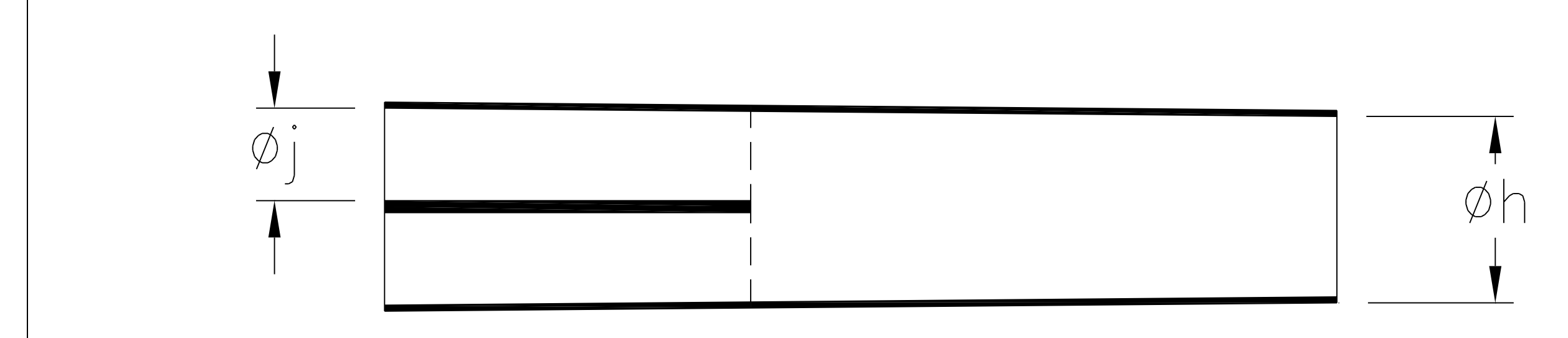
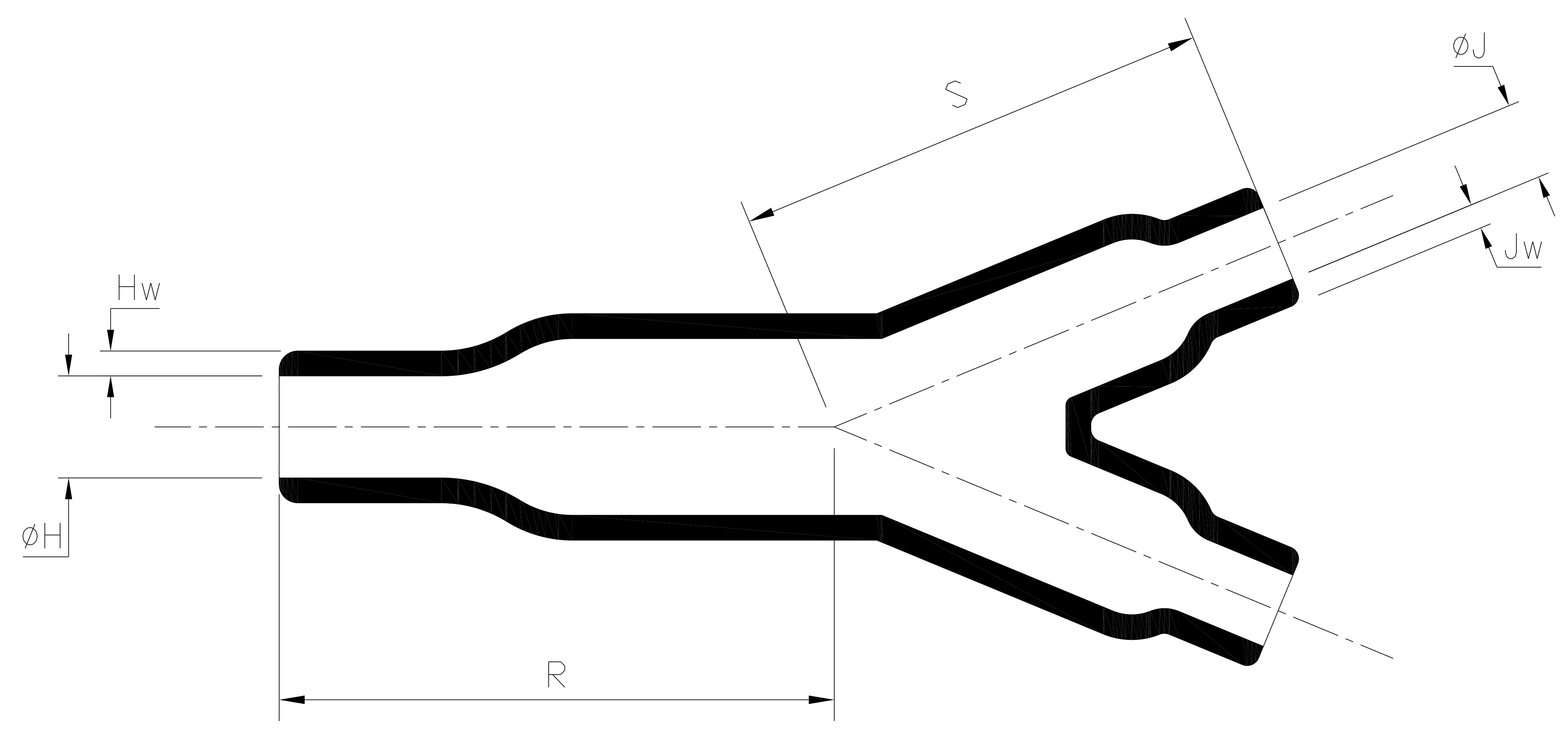
BS 8888

DO NOT SCALE
IF IN DOUBT ASK

Q.A.	H/S SETT
H/S Q.A.	REL. INSP.
H/S PROD	EXT. ISS. CODE

STANDARD PART (AFTER UNRESTRICTED RECOVERY)

EXPANDED (AS SUPPLIED)



PART No.	EXPANDED DIAMETERS (AS SUPPLIED)		RECOVERED DIAMETERS		RECOVERED DIMENSIONS			
	øh	øj	ØH	ØJ	R	S	Hw	Jw
	MIN	MIN	MAX	MAX	±10%	±10%	±20%	±20%
213-1	17.3 (0.68)	11.1 (0.44)	8.5 (0.33)	7.9 (0.31)	83.1 (3.27)	64.0 (2.52)	2.3 (0.09)	2.3 (0.09)
213-2	40.0 (1.57)	31.8 (1.25)	8.5 (0.33)	7.9 (0.31)	83.1 (3.27)	64.0 (2.52)	2.3 (0.09)	2.3 (0.09)
213-3	17.0 (0.67)	17.0 (0.67)	8.5 (0.33)	7.9 (0.31)	83.1 (3.27)	64.0 (2.52)	2.3 (0.09)	2.3 (0.09)

Heatshrinkable Moulded Shapes Bulbous Boots 2-Way Outlet HellermannTyton For information only, not subject to technical changes.

2	P1502	GL	27/04/15
1	P1417	GB	04/07/13
ISSUE	NOTE No.	DRAWN	DATE

HellermannTyton
 William Prance Road,
 Plymouth International Med. & Tech. Park,
 Plymouth, PL6 5WR
 Tel ++44 (0) 1752 701261
 Fax ++44 (0) 1752 790058

NAME	GB	SCALE	NTS
DATE	04/07/13	DIMS IN	mm (in)
TITLE	2 WAY OUTLET SLEEVE		

ADHESIVE	A3	SHT. 1
ORIGINAL SHEET SIZE	420mm x 297mm	OF
PART No.	213	1 SHTS.
DRAWING No.	152276	