

1) CONSTRUCTION:

CONDUCTOR:	22 AWG 7/30 STRANDED TINNED COPPER	NOM. DIA.	.030"
INSULATION:	SEMI-RIGID POLYVINYLCHLORIDE .010" NOM. WALL THICKNESS		.050"
CABLE:	(4) INSULATED CONDUCTORS TWISTED TOGETHER WITH A 2" LAY TO FORM A CABLE CORE		.121"
JACKET:	POLYVINYLCHLORIDE, CHROME GRAY, .032" NOM. WALL THICKNESS		
	OVERALL CABLE DIAMETER		.185"

2) PHYSICAL PROPERTIES:

TEMPERATURE RATING, MAX.	60°C & 80°C
TEMPERATURE RATING, MIN.	-20°C
WT./M', NOM., NET.	22.4 LBS.

3) ELECTRICAL CHARACTERISTICS:

CAPACITANCE, MUTUAL	25 PF/FT
DIELECTRIC WITHSTANDING, MIN.	1500V RMS
VOLTAGE RATING, MAX.	300V
D.C. RESISTANCE, MAX. PER ASTM B286	16.7 Ω/1000'

4) AGENCY APPROVALS:

(UL) NEC TYPE CM
 CSA AWM FT4
 UL AWM STYLE 2464

5) APPLICATION:

RoHS COMPLIANT MATERIALS.

6) PRINT:

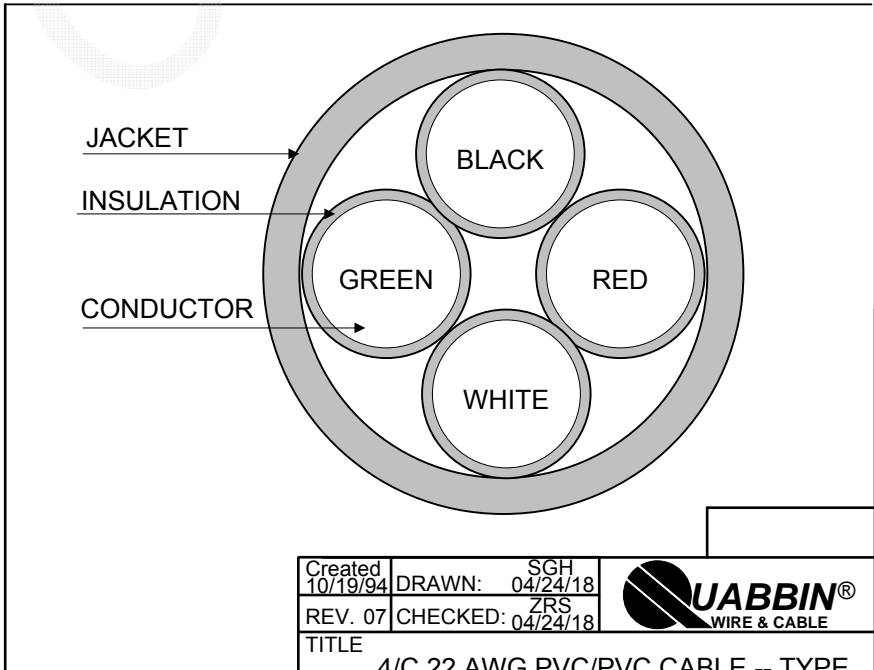
QUABBIN 7125 (UL) TYPE CM 22 AWG OR AWM 2464 -- CSA LL51726 AWM I/II A/B 80C 300V FT4 -- RoHS --
(LOT DESIGNATOR)

7) COLOR CODE:

1. BLACK
2. RED
3. WHITE
4. GREEN

8) PACKAGING:

TO BE PACKAGED AS PER QWC'S STANDARD PACKAGING



CUSTOMER APPROVAL:

DATE:

Created 10/19/94	DRAWN: SGH 04/24/18	
REV. 07	CHECKED: ZRS 04/24/18	
TITLE 4/C 22 AWG PVC/PVC CABLE -- TYPE CM, STYLE 2464, CSA AWM FT4		
QUABBIN P/N	7125	1 of 1