



Floor Boxes



Poke-Thru Devices



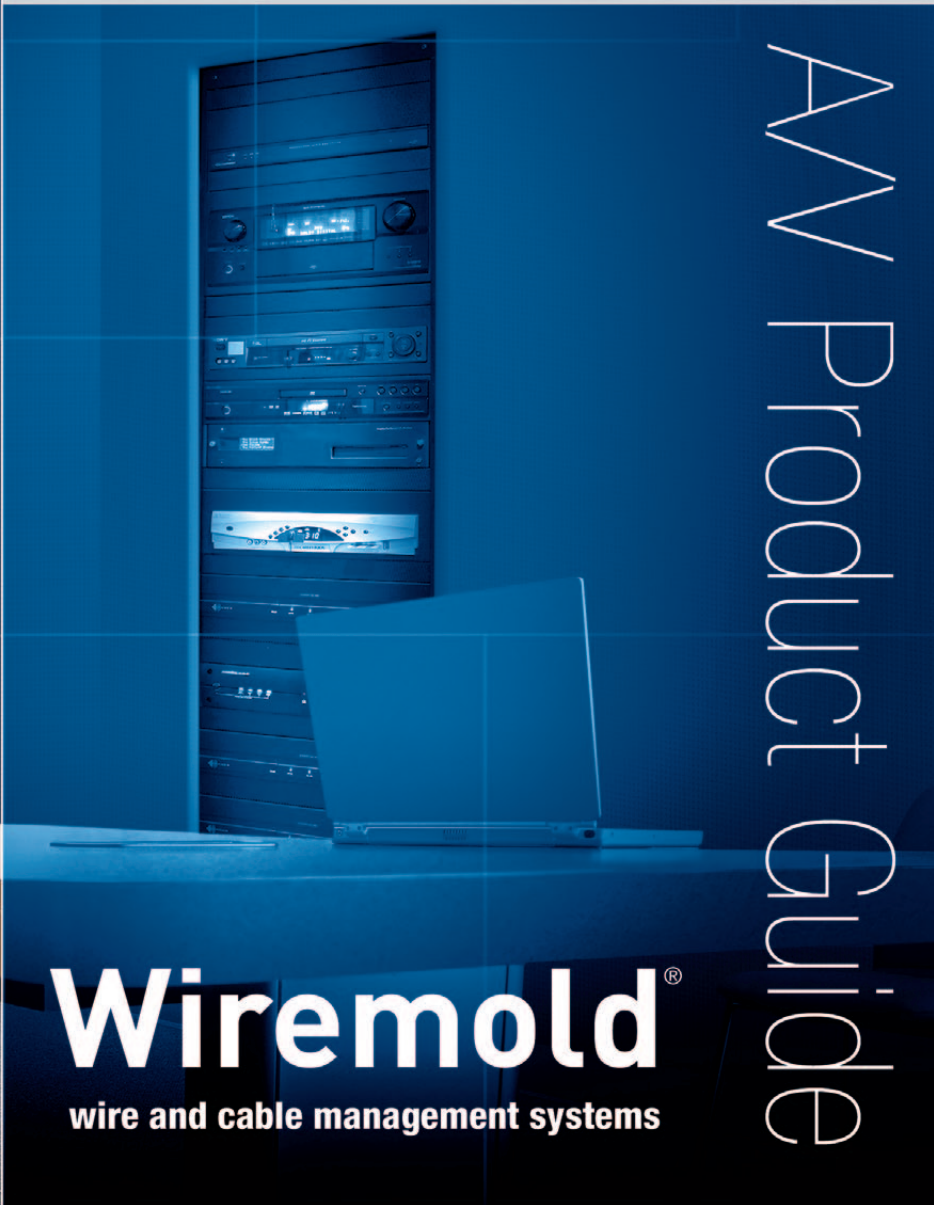
Work Surface Portals



Raceway Systems



Architectural Columns



# AV Product Guide

# Wiremold®

wire and cable management systems

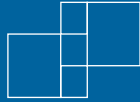


**now  
available  
through**

***MA***®  
**Middle Atlantic Products**  
**EXCEPTIONAL SUPPORT & PROTECTION™**

## Middle Atlantic and Legrand:

### A Powerful Infrastructure Combination



Great news for AV Integrators and Installers! Wiremold® products from Legrand are now available through Middle Atlantic, so you can order a more complete infrastructure solution for your AV installations than ever before. This guide is an overview of the key new product families that are available to you. For more information please contact your Middle Atlantic Representative or contact us and we will be happy to help you.

#### What's New



Middle Atlantic has joined Legrand, a leading global infrastructure provider. Together, we are working to develop an infrastructure company like no other. Offering Wiremold products is a first step towards bringing improved offerings to benefit our customers.

#### Why Wiremold



Wiremold has more than 100 years of innovation and experience to draw upon – and is the undisputed leader in raceway and cable management infrastructure. Many of these products are perfect complements to Middle Atlantic offerings and are applicable to AV, broadcast and security installations.

#### What products are available



In general, all Wiremold products are available to Middle Atlantic customers with minimal lead times. In keeping with our philosophy, Middle Atlantic will also stock the most applicable and demanded products so that they can be shipped together with the Racks and other materials needed at the start of an installation.

#### What else do customers need to know



Middle Atlantic Products will continue to work to bring our customers the finest infrastructure products to support their AV installations. Making Wiremold products available helps our customers, but is only the beginning. As part of Legrand, there are many more opportunities ahead.



#### SOURCE EQUIPMENT

Middle Atlantic racks such as the new BGR Series house source equipment, amplifiers, processing and servers in dedicated equipment rooms or in distributed locations. Integrated power, cooling, and cable management systems support the active electronics, ensuring peak performance and reliability and extending equipment life.



#### WORKSTATIONS

Distributed locations often require not only connection and access, but also smaller amounts of local electronic equipment. Whether it is an audio workstation, security checkpoint, or any distributed AV location, Middle Atlantic has equipment mounting products that will meet the need.



### FLOOR POWER AND SIGNAL ACCESS

Reconfigurable and open-plan office spaces are becoming increasingly common as companies improve their facility flexibility. Wiremold floor boxes and poke-thru devices are ideal for providing power and connectivity to these areas, as well as all types of AV that would benefit from installations under tables or elsewhere on floor surfaces.



**CONFERENCE ROOMS** Meeting rooms, classrooms, and similar locations are increasing their use of integrated and temporary AV equipment as meetings and learning become more interactive. Middle Atlantic has products such as the new C5 series credenza racks that can house local electronic equipment as well as connect to remote systems. Wiremold raceways can bring power, signals, and communication to such locations effectively.



### OVERHEAD AND ON-WALL CABLE MANAGEMENT

Middle Atlantic cable ladders or Wiremold raceway systems provide safe, secure pathways for power, signal, and communication cables, connecting the source equipment to distribution points and to the points of use. Many options are available to meet job requirements, including open and closed pathways, metal and rugged non-metallic raceways, high-capacity and low-profile models – we have solutions to meet your challenges.



### TABLETOP POWER AND SIGNAL ACCESS

Conference tables and lecture halls are only some of the places where power, communications, and AV connectivity are needed on tabletops. Wiremold products provide many options for connecting users with the AV infrastructure quickly and effectively.



# WIREMOLD® FLOOR BOXES

Floor Boxes are ideally suited to provide power, A/V, and communication services to open spaces in new construction. Designed for use in concrete, raised, and wood floor applications and available in a wide range of sizes and finishes, Wiremold Floor Boxes are the broadest line of floor boxes in the industry, and the first and only family of Fire Classified Floor Boxes available today.

## Evolution™ Series Floor Boxes

Evolution™ Series Floor Boxes offer the most innovative and flexible floor box design available. They are an ideal option for installations where services are constantly evolving, such as commercial offices, conference rooms, stages, and entertainment venues. Ranging in size from 6- to 10- gangs of capacity, these boxes have completely finished interiors with removable modules that provide easy access for reconfiguring services.



### FEATURES

- Designed to work in concrete, raised and wood floor applications and are fully adjustable both pre- and post-concrete pour.
- Available in above-grade, on-grade, and fire classified versions.
- Removable modules allow for easier installation and facility moves.
- Fully finished white painted interior.
- 3-1/2" - 3-7/8" [89mm x 98mm] of wiring capacity behind each device plate for deep A/V devices.
- Durable hinge design enables covers to open a full 180° and lie flat on the floor surface with the durability to support a large cover
- Slide cable egress doors lock in position when open, and automatically closes around wires to protect cabling and reduce trip hazards
- Accepts standard size device plates from most manufacturers.



**EFB6S**  
Six gang steel floor box.



**EFB8S**  
Eight gang steel floor box.



**EFB10S**  
Ten gang steel floor box.



## OmniBox Floor Boxes

The OmniBox Floor Box Series provides an excellent activation solution when multiple services are required in open space areas. The OmniBox Series offers 1-, 2-, and 3-gang multiservice boxes to meet the workstation needs of today's applications.



### FEATURES

- Flush activation assemblies for tile and carpet.
- Accepts industry standard and proprietary connectivity devices.
- Available in concrete-tight stamped steel and watertight cast iron construction.
- Available in two depths.
- UL and cUL Listed.
- Available in 1-, 2-, and 3-gang configurations with removable divider.
- Fully adjustable before and after concrete pour.



# WIREMOLD® FLOOR BOXES

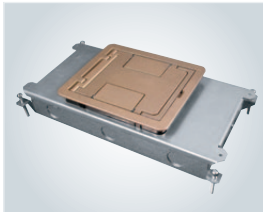
## Resource RFB® Series Floor Boxes

Resource RFB® Series Floor Boxes offer configuration flexibility using independent wiring compartments and feed-through wiring capability for power, communication, and A/V services to open spaces or directly to work stations.

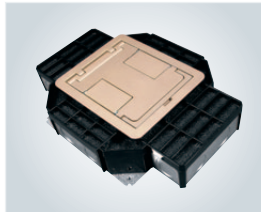


### FEATURES

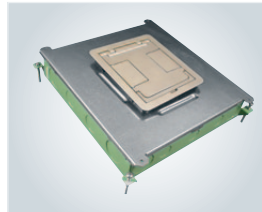
- UL Listed to U.S. and Canadian safety standards for tile, terrazzo, carpet, and wood covered floors. Meets and exceeds UL requirements under UL514A for scrub water exclusion.
- Available in 3 configurations; 2-gang, 4-gang, and 6-gang.
- Available in various depths to accommodate both shallow and deep concrete pours.
- Fully adjustable before and after the concrete pour.
- Open system allows for compatibility with most power, communication, and A/V manufacturers' devices.



**RFB2 Series**  
Two compartment, steel combination floor box. Available in both shallow and on-grade versions. Fully adjustable.



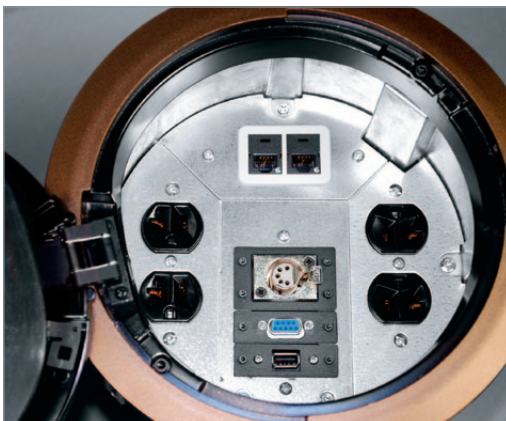
**RFB4 Series**  
Four compartment, shallow depth, combination floor box. Available in steel or cast iron. Fully adjustable.



**RFB6 Series**  
Six compartment, steel, on-grade combination floor box. Fully adjustable.

## FloorSource CRFB™ Series Raised Floor Boxes

FloorSource CRFB™ Series Round Boxes for Raised and Wood Floors provide accessibility and capacity for both power and communications in a recessed round floor box that meets the functionality and flexibility needs of Access Floor customers.



### FEATURES

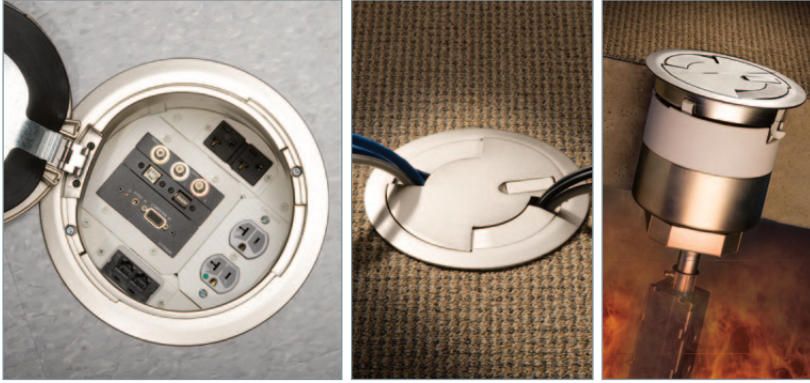
- Accepts the 8" Evolution Series Poke-Thru covers for increased aesthetics throughout the building.
- Designed to work in raised and wood floor applications.
- Conduit feeds range from 1/2" to 2" trade sizes.
- Locking tabs help secure box to floor panel for quick and easy installation.
- Prewired and custom plate options. Prewired units reduce labor costs for field installation.
- Large multi-compartment boxes provide increased wiring capacity and isolate A/V, power, and communication services.
- CRFB Raised Floor Boxes are designed to be installed after floor coverings have been installed.

# WIREMOLD® POKE-THRU DEVICES

Poke-Thru Devices are the ideal solution for bringing power, A/V, and communication connections to open space, above-grade floor environments while maintaining the Fire Classification of concrete floors. Wiremold Poke-Thru Devices are the most complete offering in the industry including Evolution™ and AV3™ Series Poke-Thru Devices, which are compatible with A/V connectivity devices from most major manufacturers.

## Evolution™ Series Poke-Thru Devices

Evolution™ Series Poke-Thru Devices allow installed devices to be recessed below floor level, and provide the largest capacity available – up to 4-gangs of capacity for power, A/V, or communication devices.

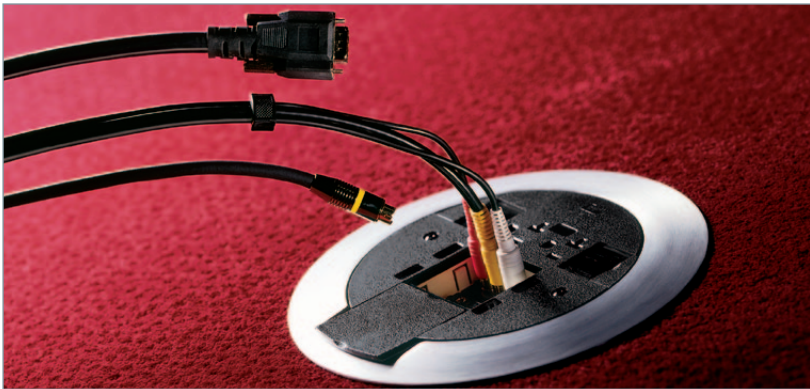


### FEATURES

- Largest Capacity Poke-Thru Device in the industry.
- Fully recessed devices.
- Open power, communication, and A/V configurability.
- Die-cast cover assemblies.
- Accepts wide range of power, communication, and A/V configurations.
- Two (2) Hour UL Fire Classified.
- Meets ADA Accessibility Guidelines – Tile cover is flush with the finished floor covering.
- Available pre-assembled or fully configurable.
- TopGuard® Protection – meets or exceeds UL scrub water requirements.

## AV3 Series Poke-Thru Devices

AV3 Series Surface Style Poke-Thru Devices have the capacity to accept one (1) 20 Amp duplex power device and up to three (3) Extron® Electronics MAAP Series device plates.



### FEATURES

- Designed to meet the needs of the growing A/V Industry.
- Accepts wide range of power, communication, and A/V configurations.
- Meets ADA Accessibility Guidelines – Tile cover is flush with the finished floor covering.
- TopGuard Protection – meets or exceeds UL scrub water requirements.
- Two (2) Hour UL Fire Classified.

## RC9 Series™ Poke-Thru Devices

The RC9 Flush Style Poke-Thru Device, one of the RC Series™ of products, provides a 15A quad receptacle for power applications.



### FEATURES

- Flexible wiring for standard or isolated ground receptacles.
- Individual connection slide covers snap back to provide protection when not in use.
- 15A quad receptacle.
- Quick and easy one-person installation.
- Suitable for use in air handling spaces in accordance with NEC Sec 300-22(C).
- Wide trim flange Meets ADA Accessibility Guidelines.
- Two (2) hour UL Fire Classified.
- UL Listed and UL Fire Classified to U.S. and Canadian safety standards for tile and terrazzo.
- TopGuard Protection – meets or exceeds UL scrub water exclusion requirements for tile and carpet floors.

# WIREMOLD® WORK SURFACE PORTALS

Wiremold Work Surface Solutions bring power, communication, and A/V connections right where they're needed – on the work surface, with ideal solutions for everything from workstations to conference room tables.

## deQuorum™ Recessed Work Surface Portals

deQuorum™ Recessed Work Surface Portals provide flexibility in décor, power, communication, A/V connectivity, and installation options to meet specific functional and aesthetic needs. Portals are recessed and covers can be closed during use to make them unobtrusive.



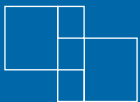
### FEATURES

- deQuorum Recessed Work Surface Portals can be configured to meet most A/V, power, and/or communications requirements including UTP, video, and fiber optics.
- Cable management – A separate compartment provides cable management below the mounting surface.
- Gasketed Receptacle – Two 15A or 20A spec grade receptacles are dust and moisture resistant.
- Configurable – can be field-configured or reconfigured to accommodate power only, communication only, A/V only, or combinations of all three in one unit.
- Cover & Finish options – choose from a variety of finishes and several cover options including a recessed cover that can accept a wide range of laminates and veneers.



### IDEAL FOR

- Conference Room Tables
- C5 Credenza Rack (shown below)



Middle Atlantic has products such as the new C5 series credenza racks that can house local electronic equipment as well as connect to remote systems.

Wiremold raceways can bring power, signals, and communication to such locations effectively.



# WIREMOLD® SURFACE RACEWAY SYSTEMS

Wiremold Surface Raceway Systems provide efficient, cost-effective, and attractive ways to bring A/V, power and communication connections wherever they're needed in virtually any type of room. They are ideal for new construction or retrofits to connect rack-mounted systems to point-of-use locations, particularly in more visible settings. Available in a variety of sizes, capacities, and materials, including aluminum, steel and nonmetallic – Wiremold raceway systems are designed to install easily, perform flawlessly, and blend beautifully with any décor.

## OFR Series Overfloor Raceway System

Wiremold OFR Series Overfloor Raceway provides four channels for multiple combinations of power, communications, and A/V in an ADA compliant profile that installs over existing floor coverings and is both tamper-resistant and installer-friendly.

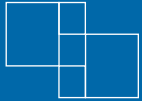


### FEATURES

- Lowest profile overfloor raceway available to minimize potential trip hazards.
- Provides services where in-floor or ceiling distribution are not possible.
- Provides four separate wiring channels
- Durable textured finish resists scuffing and is paintable.
- Accepts industry standard & proprietary connectivity devices.
- Attaches directly to carpet, tile or wood surface for temporary or permanent installation. No need to alter the floor covering.
- Transition fittings are available to feed from raceway and Vista columns.
- Tamper-resistant system discourages unwanted access.
- Meets ADA Accessibility Guidelines. (ADA Standard 4.5)
- ETL Listed in US and Canada.

### IDEAL FOR

- Providing a wiring patch from work consoles to monitor walls (shown on left)

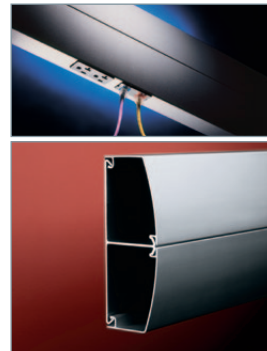


Middle Atlantic has products such as the VisionFrame™ Video Monitor Wall which mounts 10" - 80" monitors and is easy to assemble.



## DS4000™ Series Designer Series Steel Raceway System

Innovative dual-channel raceway with increased capacity due to its unique profile, integral divider, and downward facing activations. Ideal for any application that requires a high capacity metal raceway.



### FEATURES

- Aesthetic, curved profile offers increased wiring capacity over conventional raceway profiles.
- Innovative Adjust-to-Fit™ Couplings.
- Pre-scored integral divider with predrilled knockouts.
- Downward facing activations provide protection for service connections.
- Bend radius control and obstacle avoidance fittings.
- Faster, easier installation than conventional raceway systems.
- Ideal for applications that require a high capacity metal raceway.
- Available prewired for fast track construction.
- Expanded color palette.

## 2400™ and 2400D™ Series Low Profile, Single- and Dual-Channel Steel Raceway Systems

Single- or dual-channel raceway. Easy-to-install and ideal for basic power or communication/low voltage installations in classrooms, hotels, and anywhere a low profile raceway solution is needed.



### FEATURES

- Low profile raceway available in both single- and dual-channel versions.
- Ideal for classrooms, hotel, and office applications.
- Open power, A/V, and communication configurability.
- Downward facing activations.
- One-gang, two-gang, and over-the-raceway device boxes.
- In-line field-configurable receptacles.
- Full 2" [51mm] bend radius control fittings.
- Bridge fittings for crossing existing 500®, 700®, and 2400™ Series Raceway installations.



# WIREMOLD® SURFACE RACEWAY SYSTEMS

## 4000® Series Single- and Dual-Channel Steel Surface Raceway Systems

Wiremold 4000® Series Raceway is the workhorse of surface raceway systems. It can be divided for multi-service applications, making it ideal for large cable capacity and dual-service requirements.



### FEATURES

- Large cross section provides ample capacity
- Complete line of fittings, including connections to other raceway systems.
- New Bridge Fittings can bridge over existing 4000, 2400, 700, and 500 Series Raceways.
- New Faceplate options improve appearance and provide new capabilities.
- FiberReady 2" [51 mm] Fiber Optic Radius fittings are UL and cUL verified and exceed the recommendations of TIA/EIA 569A.
- Standard Gray baked enamel and Ivory ScuffCoat™ finishes.
- Available prewired to match specific job requirements; consult factory for details.
- Accepts industry standard & proprietary connectivity devices.
- UL5 and ADA compliant.
- UL Listed multioutlet assemblies.
- cULus Listed Surface Metal Raceway System.

## 500® and 700® Series Small Single-Channel Steel Surface Raceway Systems

Wiremold 500® and 700® Series Raceway is ideal for surface mounting small amounts of electrical wiring, A/V, or communication cables.

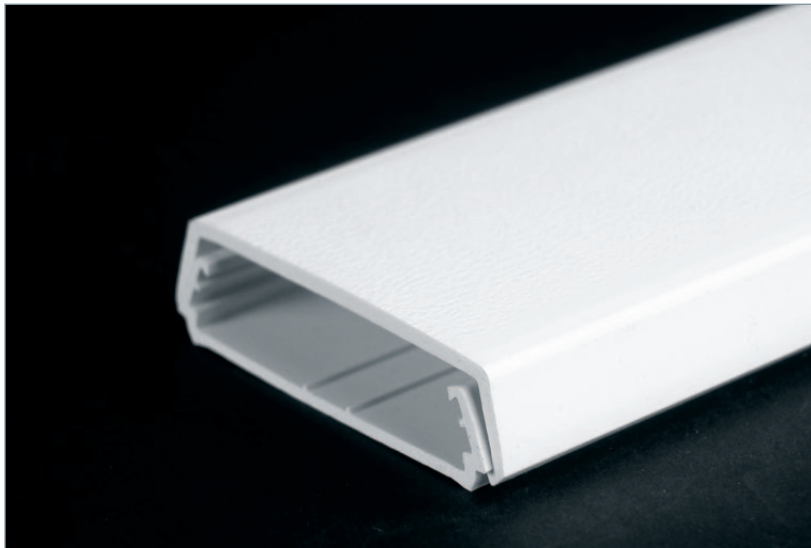


### FEATURES

- Low-profile, unobtrusive appearance.
- Durable ScuffCoat finish can be overpainted.
- 500 Series available in ivory; 700 Series available in ivory or white.
- Base and cover are a preassembled one-piece unit for easy installation and security.
- Complete line of fittings, including connections to other raceway systems.
- V5748-3 Device Box is designed for use with Ortronics® Wi-Jack™ Wireless Access Points.
- Accepts industry standard & proprietary connectivity devices.
- UL5 and ADA compliant.
- UL and cUL Listed component raceways.

## 2300™ Series Small Two-Piece Nonmetallic Raceway System

2300™ Series Raceways are designed for communication or power applications in classrooms, offices, hotels, or anywhere a small, secure, low profile raceway is needed. The 2300BACD Divided Raceway is ideal for use when power and low voltage cabling are needed in a single raceway.



### FEATURES

- Ideal for communications, computer lines, surveillance systems, fire alarms, outlets, and more.
- Durable, paintable textured PVC ivory or white finish.
- Single- and dual-compartment low profile designs.
- Adhesive backing speeds installation for low voltage. (under 50V)
- Lightweight and easy to handle to save time and labor costs.
- Comes in standard 5' [1.525m] lengths or custom lengths up to 10' [3.05m].
- Available divided FiberReady® fittings provide 2" [51mm] bend radius.
- Available over-the-raceway boxes mount over continuous run of raceway base, eliminating the need to cut raceway when locating devices.
- Sure-Snap® boxes provides flush look and easy installation.
- Snap-on cover provides security with access to wiring for changes or additions.
- Accepts industry standard and proprietary connectivity devices.
- UL Listed in the US and Canada



# WIREMOLD® SURFACE RACEWAY SYSTEMS

## Uniduct® 2800 and 2900 Series Latching Nonmetallic Raceway Systems

The Uniduct® Nonmetallic Latching Raceway System is a one-piece single channel design, ideally suited to route and protect fiber optic, UTP, and other low-voltage (50V or less) cables in an easy to install and aesthetically pleasing application.



### FEATURES

- One-piece design is easy to handle and install.
- Snap-close latch makes installations and changes easy.
- Durable, flexible hinge construction.
- Adhesive backing makes installation quick and easy.
- Fiber compliant fittings maintain 1 1/4" [32mm] bend radius for UTP and fiber optic cable.
- Available in both 6' & 8' [1.8m & 2.4m] lengths.
- Made of durable impact-resistant PVC; easy to cut and trim.
- Standard paintable colors are ivory, white, and fog white. Consult factory for custom colors.
- Accepts industry standard and proprietary connectivity devices.

## 5400™ Series Large Capacity Multiple Channel Nonmetallic Raceway System

5400™ Series Raceway provides wire and cable management for power, communication, and A/V applications. For school and office installations, this is an ideal solution for providing access to services while maintaining wire and cabling flexibility.



### FEATURES

- Large cable capacity in a low profile design – Accommodates needs now and in the future.
- Twin Snap cover – Complete segregation of access to power and low voltage services for installation flexibility.
- FiberReady Series Fittings snap on to overlap raceway for an aesthetic installation. Fittings are UL verified for a 2" [51mm] bend radius and exceed the recommendations of TIA/EIA 569-A.
- Corner drop feed – aesthetically pleasing solution for feeding horizontal runs of raceway.
- Made of durable impact-resistant PVC; lightweight and easy to cut.
- Standard paintable colors are ivory and white.
- Accepts industry standard and proprietary connectivity devices.
- UL and cUL Listed.

## 5500™ Series Large Capacity Multi-Channel Nonmetallic Raceway System

Wiremold 5500 Series Raceway provides wire & cable management for larger power, communications, & A/V applications in schools, office buildings, & other institutions.



### FEATURES

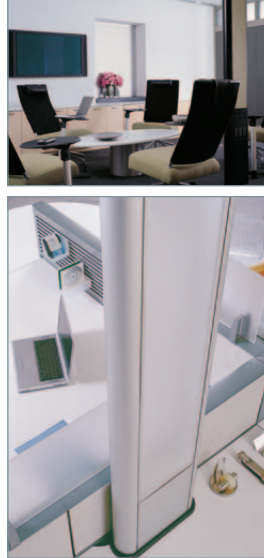
- 2" [51mm] bend radius compliant fittings are UL verified for a 2" [51mm] bend radius and exceed the recommendations of TIA/EIA-569. They provide cable protection in lay-in and pull-through installations.
- Three channel raceway with breakaway dividers lets installers run low voltage and power wiring in the same raceway and allows for future changes.
- Devices can be mounted in-line, offset or combined.
- Full series of face plates are available for power, communications, and A/V applications.
- Made of rugged, paintable PVC material.
- Supplied in standard 8-foot [2.44m] lengths and standard ivory and white finishes. Consult factory for custom colors and lengths.
- Available prewired to match specific job requirements; consult factory for details.
- Accepts industry standard & proprietary connectivity devices.
- UL and cUL Listed component raceways.

# WIREMOLD® ARCHITECTURAL COLUMNS

Vista Architectural™ Columns offer an array of customizable solutions for the A/V professional. These aesthetic columns can be used to feed numerous workstations, supply connections to a large area, or as a table leg to provide power, A/V, and communications to work surfaces. No matter what the capability, finish, fit, or style you need, Vista Architectural Columns are your vertical solutions answer.

## Vista Architectural™ Column

Vista Architectural Columns provide configurable solutions for power, A/V, wireless, and communication services in open spaces.



### FEATURES

- Flexibility – Select from a range of panels, frame shapes, extensions, and frame sizes to accommodate aesthetic and capacity requirements.
- Center panels are available in stylish finishes and color options including wood, glass, and fabrics to enhance any décor.
- Add virtually any commercially available lighting fixture.
- Accepts most commercially available monitor mounts.
- Furniture feed options – Modular furniture feeds are available at the beltline and ground level.
- Extension kit accommodates many ceiling heights and now comes with a center panel.
- cULus Listed Multioutlet Assemblies. File E15191, Guide PVGT. Meets Article 380 of NEC.
- Compatible with a wide range of standard A/V, power, and communications devices.

## Vista Architectural™ Point5 Column

The Vista Point5 provides power, communication, and A/V connections without disrupting conference spaces. Mounted on the floor, the Vista Point5 can nestle into the center of a contemporary conference table or double as one of the support legs. Clear access to outlets and jacks keeps the floor free from running cords and cables. And, the Vista Point5 offers easy communications connections for up to eight users. Make the most of any meeting space with the Vista Point5.



### FEATURES

- Flexibility – Select from a range of panels, frame shapes, extensions, and frame sizes to accommodate aesthetic and capacity requirements.
- Choice of heights to accommodate different work surfaces.
- Internal barrier permits A/V, electrical, and communications devices to be installed next to each other without interference.
- cULus Listed Multioutlet Assemblies. File E15191, Guide PVGT. Meets Article 380 of NEC.
- Compatible with a wide range of standard A/V, power, and communications devices.





#### CORPORATE HEADQUARTERS

300 Fairfield Road, Fairfield, NJ 07004, U.S.A.  
Corporate Voice: 800-266-7225  
Fax: 800-392-3955  
International Voice: +1 973 839-1011  
Fax: +1 973 831-4982

#### MIDDLE ATLANTIC CANADA

Ottawa, Ontario (Canada Head Office)  
113 Iber Road, Ottawa, Ontario K2S 1E7  
Corporate voice: 888-766-9770  
Fax: 888-599-5009

#### FACTORY DISTRIBUTION

**USA:** New Jersey  
California · Illinois  
[middleatlantic.com](http://middleatlantic.com)

**Canada:** Ontario  
British Columbia  
[middleatlantic.ca](http://middleatlantic.ca)

Middle Atlantic Products manufactures exceptional support and protection products to mount integrated electronic systems. All of our products are engineered to maximize system reliability and to meet the needs of installers. Our ship-from-stock philosophy and exceptional technical and customer support provide our customers with the products they need when they need them.

Middle Atlantic has joined Legrand, a leading global infrastructure provider, and we have now made industry-leading Wiremold® products available through Middle Atlantic. With these valuable AV product additions, you can order a more complete infrastructure solution for your AV installations than ever before. This guide is an overview of the new product families that are available. For more information please contact your Middle Atlantic Representative or contact us directly and we will be happy to help you.



A Group brand | 