

1) CONSTRUCTION:

CONDUCTOR:	26 AWG 7/34 STRANDED TINNED COPPER	NOM. DIA.	.019"
INSULATION:	POLYOLEFIN, .010" NOM. WALL THICKNESS		.039"
PAIRS:	COLOR CODED SINGLES TWISTED INTO PAIRS		.078"
CABLE:	(4) TWISTED PAIRS TWISTED TOGETHER TO FORM A CABLE CORE WRAPPED WITH A CLEAR POLYESTER BINDER.		.162"
SHIELD:	AN ALUMINIZED POLYESTER FOIL SHIELD (FOIL IN, 100% COVERAGE) WITH A 26 AWG TINNED COPPER DRAIN WIRE IN CONTACT WITH METALIZED SURFACE SHALL BE APPLIED OVER THE CABLE CORE.		.168"
JACKET:	POLYVINYLCHLORIDE, (COLOR, PER CHART 1), .024" NOM. WALL THICKNESS	OVERALL CABLE DIAMETER	.212" MIN. .222" NOM. .232" MAX. (BY PI TAPE)

2) PHYSICAL PROPERTIES:

TEMPERATURE RATING, MAX. 75°C
 TEMPERATURE RATING, MIN. -20°C
 WT./M', NOM., NET. 21.3 LBS.

CHART 1:

QUABBIN P/N	2900	2901	2902	2903	2904	2905	2906	2907	2908	2909	2910	2912
JACKET COLOR	BLACK	BROWN	RED	ORANGE	YELLOW	GREEN	BLUE	VIOLET	GRAY	WHITE	BEIGE	PINK

3) ELECTRICAL CHARACTERISTICS:

SEE PAGE 2

4) AGENCY APPROVALS:

NEC (UL) TYPE CMR
 CEC C(UL) TYPE CMR
 ETL VERIFIED TO TIA-568-C.2 CAT 5e

5) APPLICATION: (WHITE PRINT)

SHIELDED FLEXIBLE PATCH/JUMPER CABLE TO SUPPORT SCREENED ISO 11801 CLASS D AND SCREENED 568-C.2 CATEGORY 5e APPLICATIONS. RoHS COMPLIANT MATERIALS.

6) PRINT: (WHITE INK ON BLACK JACKET, ALL OTHERS BLACK INK)

QUABBIN DATAMAX 5e SCREENED 100 OHM PATCH CORD ISO 11801 P/N (**QWC P/N PER CHART 1***) -- TYPE CMR C(UL)US 26 AWG 75C -- ETL VERIFIED TO TIA-568-C.2 CAT 5e -- RoHS -- (**LOT DESIGNATOR**) (**SEQUENTIAL FOOTAGE**)

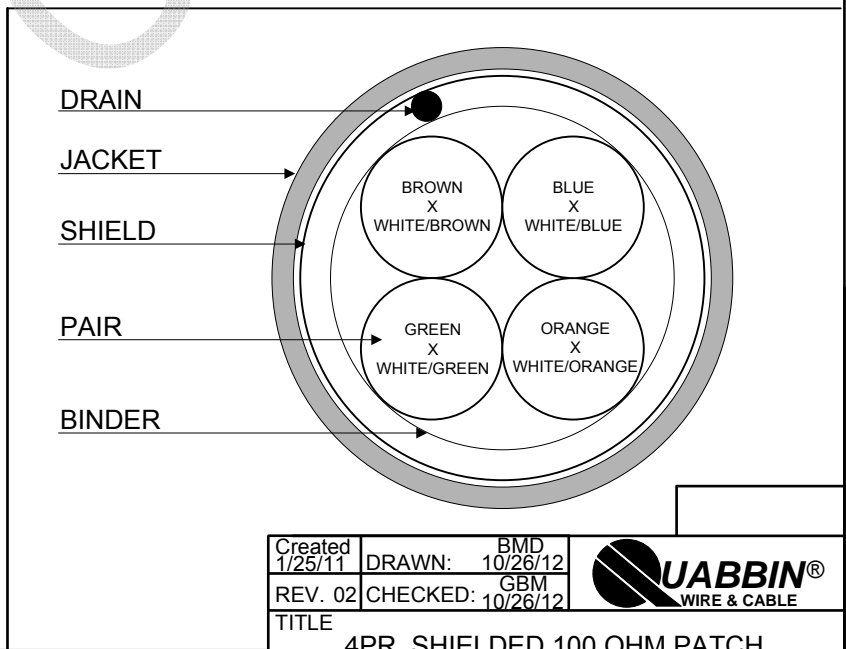
*NOTE: "R" MAY BE ADDED TO P/N IN PRINT TO DISTINGUISH FROM PREVIOUS NON-RoHS PRODUCT

7) COLOR CODE:

1. BLUE X WHITE/BLUE
2. ORANGE X WHITE/ORANGE
3. GREEN X WHITE/GREEN
4. BROWN X WHITE/BROWN

8) PACKAGING:

TO BE PACKAGED AS PER QWC'S STANDARD PACKAGING



Created 1/25/11	DRAWN: BMD 10/26/12	
REV. 02	CHECKED: GBM 10/26/12	
TITLE 4PR. SHIELDED 100 OHM PATCH CORD/JUMPER -- CATEGORY 5e		
DRAWING #		QWC0014
		1 of 2


CUSTOMER APPROVAL:

DATE:

3) ELECTRICAL CHARACTERISTICS: (FOR 100m OF CABLE)

CAPACITANCE, MUTUAL, NOM.	13.5 PF/FT. AT 1 MHZ	
DIELECTRIC WITHSTANDING, MIN	1500V RMS	
VOLTAGE RATING, MAX.	300V RMS	
D.C. RESISTANCE, MAX.	42.6 Ω /1000'	
IMPEDANCE	100+/- 15 Ω 1-100 MHZ	
IMPEDANCE, SMOOTHED	100 +/- 10 Ω TYPICAL 5 - 100 MHZ	
SRL	23 DB 1-20 MHZ	
	23 - 10 LOG(F/20) 20-100 MHZ	
RETURN LOSS	1 - 10 MHZ	20 + 5 LOG (F) DB MIN
	10 - 20 MHZ	25 DB MIN
	20 - 100 MHZ	25- 8.6 LOG(F/20) DB MIN
PS NEXT	1-100 MHZ	64 - 15 LOG (F/.772) MIN
NEXT	1-100 MHZ	67 - 15 LOG (F/.772) MIN
PS ELFEXT	1-100 MHZ	63 - 20 LOG(F/.772) MIN
ELFEXT	1-100 MHZ	66 - 20 LOG(F/.772) MIN
ATTENUATION	1-100 MHZ	1.5[1.967 SQRT(F) + .023(F) + .05/SQRT(F)]MAX
DELAY	1-100 MHZ	534 + 36/SQRT(F)
DELAY SKEW	1-100 MHZ	<25NS
LCL	1-100 MHZ	-38dB MIN
VELOCITY OF PROPAGATION	68%	

NOTE: ALL TESTING IS CONDUCTED OFF THE REEL.

Created 1/25/11	DRAWN: BMD 10/26/12	
REV. 02	CHECKED: GBM 10/26/12	
TITLE 4PR. SHIELDED 100 OHM PATCH CORD/JUMPER -- CATEGORY 5e		
DRAWING #		QWC0014
		2 of 2

CUSTOMER APPROVAL:

DATE: