

1) CONSTRUCTION:		NOM. DIA.
CONDUCTOR:	26 AWG 7/34 STRANDED TINNED COPPER	.019"
INSULATION:	POLYOLEFIN, .010" NOM. WALL THICKNESS	.039"
PAIRS:	COLOR CODED SINGLES TWISTED INTO PAIRS	.078"
CABLE:	(4) TWISTED PAIRS TWISTED TOGETHER TO FORM A CABLE CORE WRAPPED WITH A CLEAR POLYESTER BINDER.	.168"
SHIELD:	AN ALUMINIZED POLYESTER FOIL SHIELD (FOIL IN, 100% COVERAGE) WITH A 26 AWG STRANDED TINNED COPPER DRAIN WIRE IN CONTACT WITH METALIZED SURFACE SHALL BE APPLIED OVER THE CABLE CORE.	.177"
JACKET:	LOW SMOKE ZERO HALOGEN, (COLOR, PER CHART 1), .032" NOM. WALL THICKNESS	.241"
	OVERALL CABLE DIAMETER	

2) PHYSICAL PROPERTIES:	
TEMPERATURE RATING, MAX.	75°C
TEMPERATURE RATING, MIN.	-20°C
WT./M', NOM., NET.	27.3 LBS.
FLAME RATING	VW-1
CORROSIVE GAS	IEC 60754-2
SMOKE EMISSION	IEC 61034-1 & -2
CHART 1:	

QUABBIN P/N	JACKET COLOR
2800	BLACK
2801	BROWN
2802	RED
2803	ORANGE
2804	YELLOW
2805	GREEN
2806	BLUE
2807	VIOLET
2808	GRAY
2809	WHITE
2810	BEIGE

3) ELECTRICAL CHARACTERISTICS:
SEE PAGE 2

4) AGENCY APPROVALS:
NEC (ETL) TYPE CMX
CEC C(ETL) TYPE CMX

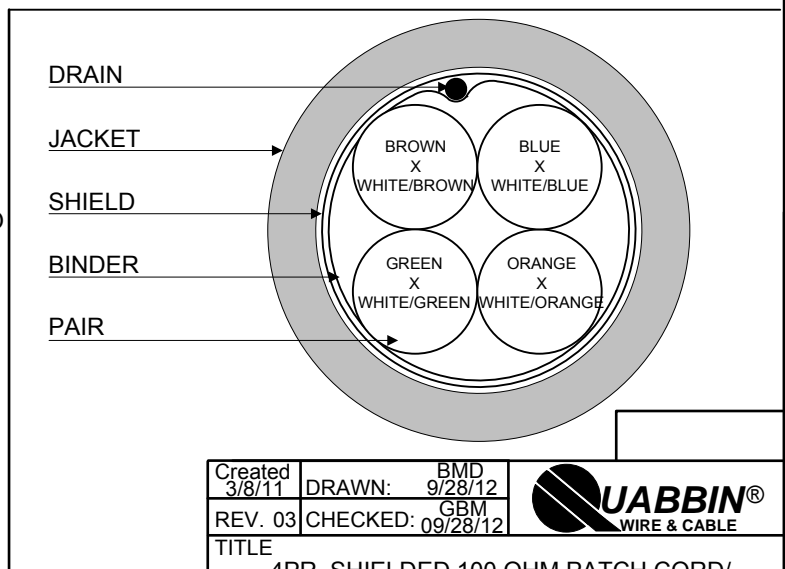
5) APPLICATION:
SHIELDED FLEXIBLE PATCH/JUMPER CABLE TO SUPPORT SCREENED ISO 11801 CLASS D AND SCREENED 568-C.2 CATEGORY 5e APPLICATIONS. RoHS COMPLIANT MATERIALS.

6) PRINT:
QUABBIN DATAMAX 5e SCREENED 100 OHM PATCH CORD/JUMPER LOW SMOKE ZERO HALOGEN TIA-568-C.2 CATEGORY 5e/ISO 11801 COMPLIANT P/N (QWC P/N PER CHART 1) -- C(ETL)US TYPE CMX 75C 26 AWG -- VW-1 -- RoHS -- (LOT DESIGNATOR) (SEQUENTIAL FOOTAGE)

*NOTE: "R" MAY BE ADDED TO SOME P/N IN PRINT TO DISTINGUISH FROM PREVIOUS NON-RoHS PRODUCT

- 7) COLOR CODE:
1. BLUE X WHITE/BLUE
 2. ORANGE X WHITE/ORANGE
 3. GREEN X WHITE/GREEN
 4. BROWN X WHITE/BROWN

8) PACKAGING:
TO BE PACKAGED AS PER QWC'S STANDARD PACKAGING




Created 3/8/11	DRAWN: BMD 9/28/12	
REV. 03	CHECKED: GBM 09/28/12	
TITLE 4PR. SHIELDED 100 OHM PATCH CORD/ JUMPER -- CATEGORY 5e -- TYPE CMX		
DRAWING #	QWC0017	1 of 2

CUSTOMER APPROVAL: _____ DATE: _____

3) ELECTRICAL CHARACTERISTICS: (FOR 100m OF CABLE)

CAPACITANCE, MUTUAL, NOM	13.5 PF/FT. AT 1 MHZ	
DIELECTRIC WITHSTANDING, MIN	1500V RMS	
VOLTAGE RATING, MAX.	300V	
D.C. RESISTANCE, MAX.	15.38 Ω/100m (42.6 Ω/1000')	
IMPEDANCE,	100+/- 15 Ω 1-100 MHZ	
IMPEDANCE, SMOOTHED	100 +/- 10 Ω TYPICAL 5 - 100 MHZ	
SRL	23 DB 1-20 MHZ	
	23 - 10 LOG(F/20) 20-100 MHZ	
RETURN LOSS	1 - 10 MHZ	20 + 5 LOG (F) DB MIN
	10 - 20 MHZ	25 DB MIN
	20 - 100 MHZ	25- 8.6 LOG(F/20) DB MIN
PS NEXT	1-100 MHZ	64 - 15 LOG (F/.772) MIN
NEXT	1-100 MHZ	67 - 15 LOG (F/.772) MIN
PS ELFEXT	1-100 MHZ	63 - 20 LOG(F/.772) MIN
ELFEXT	1-100 MHZ	66 - 20 LOG(F/.772) MIN
ATTENUATION	1-100 MHZ	1.5[1.967 SQRT(F) +.023(F) +.05/SQRT(F)]MAX
DELAY	1-100 MHZ	534 + 36/SQRT(F)
DELAY SKEW	1-100 MHZ	<25NS
LCL	1-100 MHZ	-38dB MIN
VELOCITY OF PROPAGATION	68%	

NOTE: ALL TESTING IS CONDUCTED OFF THE REEL.

Created 3/8/11	DRAWN: BMD 9/28/12	
REV. 03	CHECKED: GBM 09/28/12	
TITLE 4PR. SHIELDED 100 OHM PATCH CORD/ JUMPER -- CATEGORY 5e -- TYPE CMX		
DRAWING #		QWC0017
		2 of 2

CUSTOMER APPROVAL:

DATE: