

NPT NICKEL-PLATED BRASS FITTINGS

LFMC SEALTITE® COMPACT FITTINGS NPT NICKEL-PLATED BRASS PREMIUM FITTINGS



DESCRIPTION

- New compact design: 20% smaller and 35% lighter than standard SEALTITE® fittings
- Ideal for tight spaces
- Excellent corrosion resistance, strength and durability
- IP 66/67 rated when installed with approved conduit and tightened to UL-514B/CSA C22.2 18.3 torque specifications
- Approved for both exposed and concealed locations

SPECIFICATIONS

- Nickel-Plated Brass with PA6 clamping ring
- Each fitting has a sealing ring and lock nut
- Color: Metallic
- Temp. range: -49°F to +221°F (-45°C to +105°C)
- cULus 514B Approved #E234207

APPLICATIONS

- Metallic flexible conduit
- Compact design ideal for tight spaces
- High-end appearance for good presentation
- Suitable for hazardous locations per NEC Articles
 - 501.10 (B) (2) Class I Div. 2
 - 502.10 (A) (2) and (B) (2) Class II Div. 1 & 2
 - 503.10 (A) (3) and (B) Class III Div. 1 & 2

See: www.ul.com www.nfpa.org
www.naed.org www.nema.org
www.anacondasealtite.com

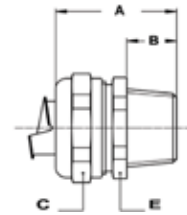
SEALTITE®
FITTINGS

B
R
A
S
S

STRAIGHT

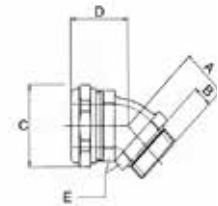


Trade Size	Item ID	Min. Int. Bore (mm)	Dimensions (inches)				KO Size NPT	Weight (lbs/100)	Std. Pkg.
			A	B	C	E			
3/8"	7140122IT	11.0	1.259	0.472	1.023	0.944	1/2"	10.8	10
1/2"	7140162IT	14.5	1.388	0.472	1.141	1.063	1/2"	12.1	10
3/4"	7140202IT	19.4	1.378	0.472	1.378	1.299	3/4"	17.2	10
1"	7140262IT	24.7	1.456	0.511	1.771	1.732	1"	30.6	5
1-1/4"	7140352IT	33.3	1.653	0.590	2.086	2.047	1-1/4"	41.0	4
1-1/2"	7140402IT	38.0	1.889	0.630	2.440	2.362	1-1/2"	61.7	2
2"	7140502IT	49.0	2.126	0.748	2.992	2.834	2"	97.0	2



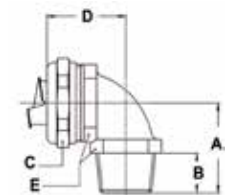
45 DEGREE

Trade Size	Item ID	Min. Int. Bore (mm)	Dimensions (inches)					KO Size NPT	Weight (lbs/100)	Std. Pkg.
			A	B	C	D	E			
3/8"	7144122IT	11.0	0.945	0.551	1.114	1.102	0.944	1/2"	19.2	10
1/2"	7144162IT	14.5	0.984	0.551	1.244	1.181	1.063	1/2"	22.3	10
3/4"	7144202IT	19.4	1.063	0.551	1.504	1.299	1.299	3/4"	36.8	4
1"	7144262IT	24.7	1.260	0.630	1.949	1.496	1.653	1"	65.3	5
1-1/4"	7144352IT	33.3	1.417	0.630	2.086	1.535	2.047	1-1/4"	95.2	2
1-1/2"	7144402IT	38.0	1.535	0.709	2.441	1.811	2.362	1-1/2"	131.2	2
2"	7144502IT	49.0	1.732	0.787	2.992	2.087	2.834	2"	206.4	2



90 DEGREE

Trade Size	Item ID	Min. Int. Bore (mm)	Dimensions (inches)					KO Size NPT	Weight (lbs/100)	Std. Pkg.
			A	B	C	D	E			
3/8"	7149122IT	11.0	1.063	0.472	1.023	1.260	0.944	1/2"	19.2	10
1/2"	7149162IT	14.5	1.181	0.472	1.141	1.338	1.063	1/2"	22.3	10
3/4"	7149202IT	19.4	1.338	0.472	1.378	1.574	1.299	3/4"	36.8	4
1"	7149262IT	24.7	1.614	0.511	1.771	1.929	1.653	1"	65.3	5
1-1/4"	7149352IT	33.3	1.811	0.511	2.086	1.968	2.047	1-1/4"	95.2	2
1-1/2"	7149402IT	38.0	2.204	0.511	2.441	2.244	2.362	1-1/2"	131.2	2
2"	7149502IT	49.0	2.441	0.630	2.992	2.677	2.834	2"	206.4	2



IP 66/67 with approved conduit