



## 7FT RJ11 6P4C STRAIGHT MODULAR CABLE

For RS-232 modular adapters for dumb terminal hookups and other serial/parallel extension applications.

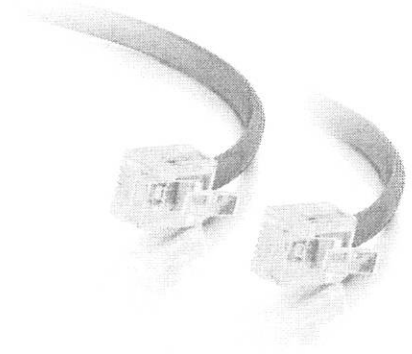
Product # : 02971

Connector 1 : (1) RJ-11 Male

Connector 2 : (1) RJ-11 Male

Lengths :

<b>7ft</b>	14ft	25ft	50ft
------------	------	------	------



### Product Description

Constructed from heavy duty 28 AWG silver satin wire, this straight through-pinned cable is ideal for cost-saving voice and data applications not requiring high data rates.



### Product Specifications

<b>Color :</b>	Silver
<b>Length :</b>	7.00 Foot
<b>UPC :</b>	757120029717
<b>Warranty :</b>	Lifetime
<b>Vendor :</b>	C2G
<b>Weight :</b>	0.090 LB