

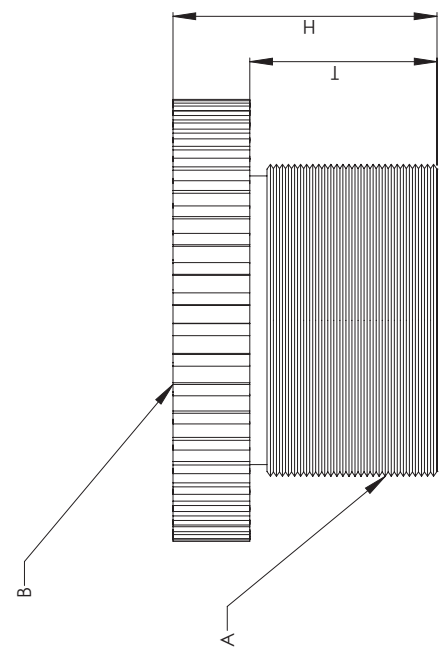
2 3 4

Nickel Plated Brass Reducers - Round - Metric to Metric

Part Numbers	Male Thread(A)	Female Thread(B)	Thread Length(T)	Height(H)
RR-1612-BR	M16 x 1.5	M12 x 1.5	.71 (18)	.24 (6)
RR-2012-BR	M20 x 1.5	M12 x 1.5	.26 (6.5)	.35 (9)
RR-2016-BR	M20 x 1.5	M16 x 1.5	.26 (6.5)	.35 (9)
RR-2516-BR	M25 x 1.5	M16 x 1.5	.28 (7)	.39 (10)
RR-2520-BR	M25 x 1.5	M20 x 1.5	.28 (7)	.39 (10)
RR-3220-BR	M32 x 1.5	M20 x 1.5	.31 (8)	.45 (11.5)
RR-3225-BR	M32 x 1.5	M25 x 1.5	.31 (8)	.45 (11.5)
RR-4025-BR	M40 x 1.5	M25 x 1.5	.31 (8)	.45 (11.5)
RR-4032-BR	M40 x 1.5	M32 x 1.5	.35 (9)	.49 (12.5)
RR-5032-BR	M50 x 1.5	M32 x 1.5	.39 (10)	.55 (14)
RR-5040-BR	M50 x 1.5	M40 x 1.5	.31 (8)	.45 (11.5)
RR-6340-BR	M63 x 1.5	M40 x 1.5	.39 (10)	.55 (14)
RR-6350-BR	M63 x 1.5	M50 x 1.5	.39 (10)	.55 (14)

PG to PG THREADS

Part Numbers	Male Thread(A)	Female Thread(B)	Thread Length(T)	Height(H)
RR-0907-BR	PG 9	PG 7	.24 (6)	.33 (8.5)
RR-1107-BR	PG 11	PG 7	.24 (6)	.33 (8.5)
RR-1109-BR	PG 11	PG 9	.24 (6)	.33 (8.5)
RR-1309-BR	PG 13	PG 9	.26 (6.5)	.35 (9)
RR-1311-BR	PG 13	PG 11	.26 (6.5)	.35 (9)
RR-1609-BR	PG 16	PG 9	.26 (6.5)	.37 (9.5)
RR-1611-BR	PG 16	PG 11	.26 (6.5)	.37 (9.5)
RR-1613-BR	PG 16	PG 13.5	.26 (6.5)	.37 (9.5)
RR-2111-BR	PG 21	PG 11	.27 (7)	.39 (10)
RR-2113-BR	PG 21	PG 13.5	.27 (7)	.39 (10)
RR-2116-BR	PG 21	PG 16	.27 (7)	.39 (10)
RR-2916-BR	PG 29	PG 16	.31 (8)	.45 (11.5)
RR-2921-BR	PG 29	PG 21	.31 (8)	.45 (11.5)
RR-3621-BR	PG 36	PG 21	.35 (9)	.49 (12.5)
RR-3629-BR	PG 36	PG 29	.35 (9)	.49 (12.5)
RR-4229-BR	PG 42	PG 29	.39 (10)	.55 (14)
RR-4236-BR	PG 42	PG 36	.39 (10)	.55 (14)
RR-4836-BR	PG 48	PG 36	.39 (10)	.55 (14)
RR-4842-BR	PG 48	PG 42	.39 (10)	.55 (14)



Third angle projection

SEALCON

14853 E HINDSDALE AVE, SUITE D
CENTENNIAL, CO 80112-4240, USA
TEL: +1-303-699-1135
TOLL FREE: +1-800-456-9012
E MAIL: info@sealconusa.com
WEBSITE: www.sealconusa.com

2 3 4