



NOTES:

1. DESCRIPTION. MARKER BLANKS, PRESSURE-SENSITIVE ADHESIVE, SELF LAMINATING, MOUNTED ON A RELEASE LINER.

2. REFERENCED DOCUMENTS. UNLESS OTHERWISE SPECIFIED, REFERENCED DOCUMENTS OF THE ISSUE IN EFFECT ON THE DATE OF THE PURCHASE ORDER OR SUBCONTRACT, SHALL FORM A PART OF THIS DRAWING TO THE EXTENT SPECIFIED HEREIN. WHENEVER REFERENCED DOCUMENTS CONFLICT WITH THIS DRAWING, THIS DRAWING SHALL GOVERN.

3. REQUIREMENTS.

3.1 MATERIAL. SELF EXTINGUISHING POLYVINYL CHLORIDE.

3.2 ADHESIVE. PRESSURE SENSITIVE ACRYLIC.

3.3 PHYSICAL OUTLINE, DIMENSIONS AND TOLERANCES. SEE OUTLINE DRAWING, FIGURE 1, TABLE I AND TOLERANCE BLOCK, SHEET 1.

3.4 MATERIAL SHALL BE SUPPLIED IN FAN FOLD FORM, BOXED.

3.5 TENSILE STRENGTH. 15 LBS MINIMUM PER INCH OF WIDTH.

3.6 APPLICATION TEMPERATURE (TO STEEL). 10°C MINIMUM.

3.7 SERVICE TEMPERATURE RANGE. -40°C TO +66°C.

3.7.1 NON-SERVICE TEMPERATURE RANGE. MARKER(S) SHALL EXHIBIT NO VISIBLE EVIDENCE OF CRACKING, SPLITTING, BLISTERING OR LOOSENING FROM BACKING WHEN EXPOSED TO A TEMPERATURE RANGE OF -62°C TO +71°C.

3.8 THERMAL SHOCK. ASTM D759, 6 CYCLES, 6 HOURS MINIMUM AT +66°C AND 16 HOURS MINIMUM AT -40°C.

3.9 MOISTURE RESISTANCE. MIL-STD-202, METHOD 106, EXCEPT OMIT STEP 7.

3.10 FLAMMABILITY. SELF EXTINGUISHING IN 10 SECONDS WHEN TESTED PER ASTM D1000.

3.11 DIELECTRIC WITHSTANDING VOLTAGE. 6000 VOLTS MINIMUM.

3.12 MARKING. IDENTIFY PACKAGE AND SHIPPING CONTAINER PER MIL-STD-130 WITH MANUFACTURER'S NAME OR SYMBOL AND PART NUMBER. ADDITIONAL MARKING AT MANUFACTURER'S OPTION.

SIZE A	CAGE CODE 53711	NAVSEA DWG NO. 5204870	
SCALE		REV G	SHEET 2

4. QUALITY ASSURANCE PROVISIONS

4.1 RESPONSIBILITY FOR INSPECTION. THE SUPPLIER IS RESPONSIBLE FOR THE PERFORMANCE OF ALL INSPECTION, EXAMINATION, AND TEST REQUIREMENTS SPECIFIED HEREIN. THE SUPPLIER MAY USE HIS OWN OR ANY OTHER FACILITIES SUITABLE FOR THE INSPECTION, EXAMINATION AND TEST REQUIREMENTS, UNLESS DISAPPROVED BY THE PROCURING ACTIVITY. THE PROCURING ACTIVITY RESERVES THE RIGHT TO PERFORM ANY OF THE INSPECTIONS, EXAMINATIONS, AND TESTS SPECIFIED HEREIN WHERE SUCH INSPECTIONS, EXAMINATIONS, AND TESTS ARE DEEMED NECESSARY TO ASSURE PRODUCTS CONFORM TO PRESCRIBED REQUIREMENTS.

4.1.1 RESPONSIBILITY FOR COMPLIANCE. THE SUPPLIER IS RESPONSIBLE FOR ENSURING THAT ALL PRODUCTS SUBMITTED TO THE PROCURING ACTIVITY FOR ACCEPTANCE COMPLY WITH ALL REQUIREMENTS OF THIS DRAWING. SAMPLING INSPECTION IN ACCORDANCE WITH MIL-STD-105 AND MIL-HDBK-53-1 OR A RELIABILITY ASSURANCE PROGRAM IN ACCORDANCE WITH MIL-STD-790, AS PART OF MANUFACTURING OPERATIONS, ARE ACCEPTABLE METHODS TO ASCERTAIN CONFORMANCE TO REQUIREMENTS. HOWEVER, THIS DOES NOT AUTHORIZE SUBMISSION OF DEFECTIVE MATERIAL, NOR DOES IT COMMIT THE PROCURING ACTIVITY TO ACCEPT DEFECTIVE MATERIAL.

4.2 QUALITY CONFORMANCE INSPECTION. THE FOLLOWING ATTRIBUTES SHALL BE INSPECTED FOR LOT ACCEPTANCE.

4.2.1 MATERIAL INSPECTION. SHALL BE REQUIRED.

4.2.2 DIMENSIONAL INSPECTION. SHALL BE REQUIRED.

SUGGESTED SOURCE(S) OF SUPPLY:

W. H. BRADY CO.  
INDUSTRIAL PRODUCTS DIVISION  
CAGE CODE 85480  
MILWAUKEE, WI 53201  
MFR PART NUMBER: SEE TABLE I

NEW ENGLAND ETCHING CO., INC  
CAGE CODE 85114  
HOLYOKE, MA 01040  
MFR PART NUMBER: SEE TABLE I

IDENTIFICATION OF THE "SUGGESTED SOURCE(S) OF SUPPLY" HEREON IS NOT TO BE CONSTRUED AS A GUARANTEE OF PRESENT OR CONTINUED AVAILABILITY AS A SOURCE OF SUPPLY FOR THE ITEM(S).

SIZE A	CAGE CODE 53711	NAVSEA DWG NO. 5204870
SCALE	REV G	SHEET 3

TABLE I

NAVSEA PART NUMBER	NUMBER OF MARKERS PER ROW	DIM A	DIM B	DIM C ±.06	DIM D	DIM E REF.	DIM F	DIM G	COLOR	MANUFACTURER'S PART NUMBER	
										BRADY	NEW ENGLAND ETCHING CO.
5204870-1	5	1.50	6.44	8.90	6.50	.03	.75	.10	WHITE	SD-50-292-R	5204870-1
5204870-2	5	1.50	3.44	8.90	3.50	.03	.75	.10	WHITE	SD-51-292-R	5204870-2
5204870-3	5	1.50	1.94	8.90	2.00	.03	.75	.10	WHITE	SD-52-292-R	5204870-3
5204870-4	*										
5204870-5	*										
5204870-6	*										
5204870-7	*										
5204870-8	*										
5204870-9	*										
5204870-10	*										
5204870-11	*										
5204870-12	*										
5204870-13	14	.50	.75	9.30	1.00	.13	.375	.10	WHITE	DAT-30-292-1	5204870-13
5204870-14	16	.50	1.44	9.00	1.50	.03	.50	0.0	WHITE	DAT-33-292-1	5204870-14

\* INACTIVE, FOR NEW DESIGN AND PROCUREMENT SELECT FROM 5204870-1, -2, -3

SIZE A	CAGE CODE 53711	NAVSEA DWG NO. 5204870
SCALE	REV H	SHEET 4

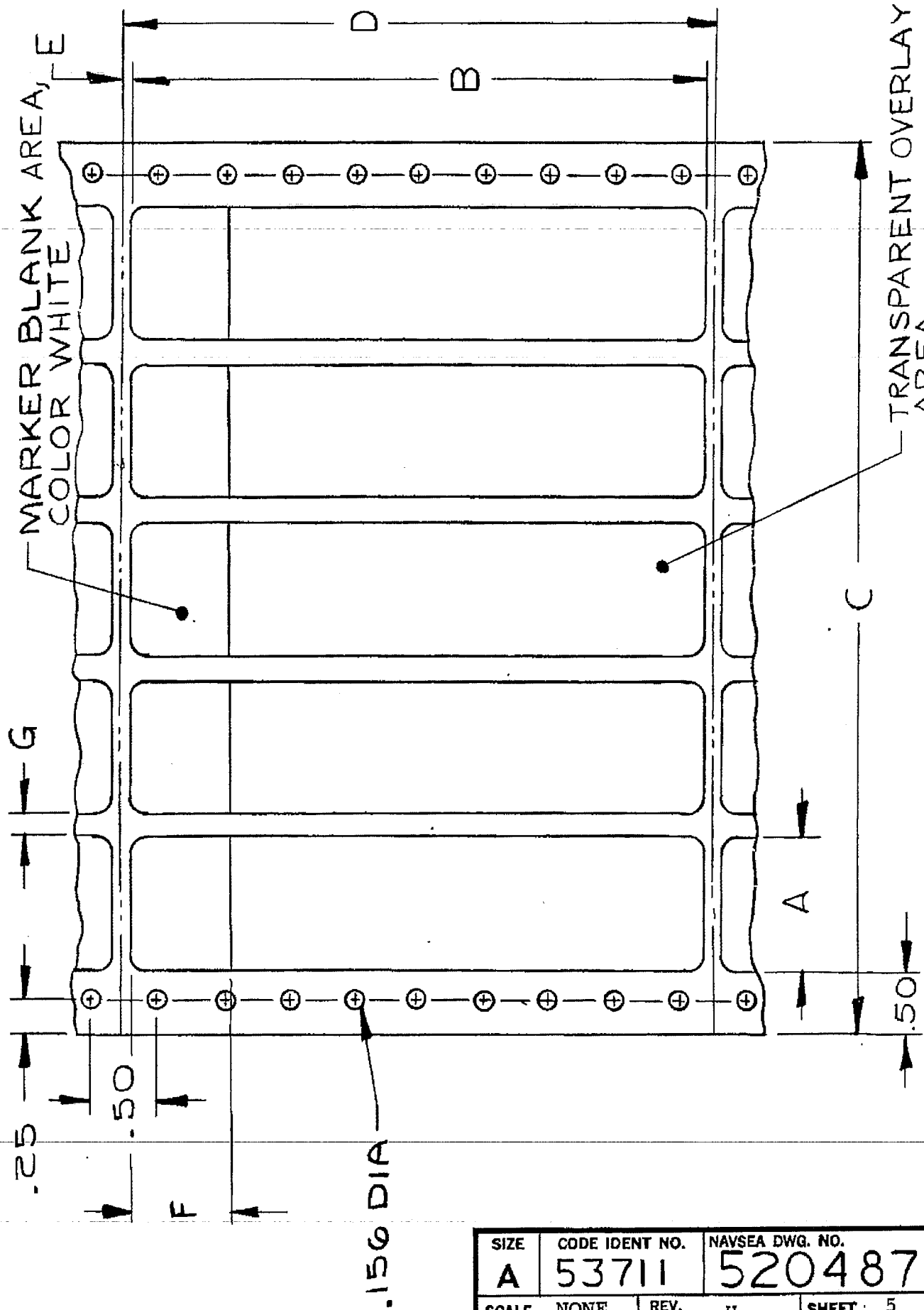


FIGURE 1. OUTLINE DRAWING

SIZE	CODE IDENT NO.	NAVSEA DWG. NO.
A	53711	5204870
SCALE	NONE	REV.
		H
		SHEET 5