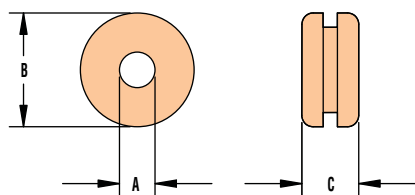




Heyco® Rubber Grommets

For Panels .125" (3,2 mm) to .188" (4,8 mm) Thick

- **Used to protect through holes.** Help eliminate sharp edges so your wires are protected and add aesthetic value to your application.
- 113 sizes available that will accommodate mounting holes ranging from .250" (6,4 mm) to holes as large as 2.375" (60,3 mm) diameter and panel thicknesses from .063" (1,6 mm) to .188" (4,8 mm).
- Rubber grommets are constructed of SBR (unless otherwise noted) with an operating temperature range of -40°F (-40°C) to 221°F (105°C).
- SBR grommets have good water resistant characteristics and are suitable for most moderate chemicals and wet or dry organic acids.
- Provide vibration dampening.



MOUNTING HOLE DIAMETER		PART NO.	DESCRIPTION	MATERIAL	PART DIMENSIONS					
in.	mm.				A Inside Diameter	B Head Diameter		C Overall Height		
in.	mm.	Black			in.	mm.	in.	mm.	in.	mm.
For .125" (3,2 mm) Thick Panels (continued)										
1.375	34,9	G1322	RG 1375-32-4	SBR	1.00	25,4	1.75	44,5	.50	12,7
1.500	38,1	G1350	RG 1500-40-4	SBR	1.25	31,8	1.88	47,6	.41	10,3
1.625	41,3	G1363	RG 1625-42-4	SBR	1.31	33,4	2.00	50,8	.44	11,1
		G1364	RG 1625-44-4	SBR	1.38	34,9	1.88	47,6	.41	10,3
1.750	44,5	G1371	RG 1750-48-4	SBR	1.50	38,1	2.13	54,0	.50	12,7
2.000	50,8	G1392	RG 2000-56-4	SBR	1.75	44,5	2.38	60,3	.38	9,5
2.500	63,5	G1423	RG 2.5-68-4	SBR	2.13	54,0	2.88	73,0	.44	11,1
For .156" (4,0 mm) Thick Panels										
.500	12,7	G1094	RG 500-12-5	SBR	.38	9,5	.69	17,5	.31	8,0
.750	19,1	G1181	RG 750-16-5	SBR	.50	12,7	.94	23,8	.41	10,3
1.500	38,1	G1348	RG 1500-38-5	SBR	1.19	30,2	1.75	44,5		
For .188" (4,8 mm) Thick Panels										
.312	7,9	G1022	RG 312-6-6	SBR	.19	4,8	.44	11,8	.31	8,0
.375	9,5	G1034	RG 375-6-6	SBR	.19	4,8	.63	15,9	.38	9,5
.437	11,1	G1057	RG 437-8-6	SBR	.25	6,4	.63	15,9	.31	8,0
.562	14,3	G1110	RG 562-6-6	Nitrile	.19	4,8	.75	19,1	.31	8,0
		G1115	RG 562-10-6	SBR	.31	8,0	.81	20,7	.38	9,5
		G1116	RG 562-10-6A	SBR	.31	8,0	.81	20,7	.44	11,1
		G1120	RG 562-12-6	SBR	.38	9,5	.81	20,7	.38	9,5
.625	15,9	G1133	RG 625-12-6	SBR	.38	9,5	.88	22,2	.44	11,1
		G1135	RG 625-13-6	Nitrile	.40	10,2	1.10	27,9		
.687	17,5	G1153	RG 687-14-6	SBR	.44	11,1	.94	23,8	.44	11,1
.750	19,1	G1172	RG 750-10-6	SBR	.31	8,0	1.00	25,4		
		G1194	RG 812-16-6	SBR	.50	12,7	1.06	27,0		
.812	20,6	G1199	RG 812-18-6	SBR	.56	14,3	1.06	27,0		
.875	22,2	G1213	RG 875-18-6	SBR	.56	14,3	1.06	27,0	.50	12,7
		G1219	RG 875-20-6	SBR	.63	15,9	1.13	28,6		
1.000	25,4	G1256	RG 1000-22-6	SBR	.69	17,5	1.31	33,4	.56	14,3
		G1261	RG 1000-24-6	SBR	.75	19,1	1.25	31,8	.56	14,3
1.062	27,0	G1272	RG 1062-24-6	SBR	.75	19,1	1.38	34,9	.50	12,7
1.250	31,8	G1306	RG 1250-28-6	SBR	.88	22,2	1.63	41,3	.56	14,3
		G1312	RG 1250-32-6	SBR	1.00	25,4	1.50	38,1	.44	11,1
1.375	34,9	G1323	RG 1375-32-6	SBR	1.00	25,4	1.75	44,5	.56	14,3
		G1329	RG 1375-36-6	SBR	1.13	28,6	1.88	47,6	.50	12,7
1.500	38,1	G1351	RG 1500-40-6	EPDM	1.25	31,8	2.00	50,8	.63	15,9
1.750	44,5	G1372	RG 1750-48-6	SBR	1.50	38,1	2.13	54,0	.56	14,3
2.000	50,8	G1390	RG 2000-52-6	SBR	1.63	41,3	2.25	57,2	.75	19,1
2.200	55,9	G1404	RG 2.200-64-6	SBR	2.00	50,8	2.75	69,9	.56	14,2
2.375	60,3	G1414	RG 2.375-64-6	PVC	2.00	50,8	2.75	69,9		

Standard color black.

Quick Specs

Material
Temperature Range

SBR, Nitrile, EPDM, or PVC
-40°F (-40°C) to 221°F (105°C)