

Description: 9/Conductor Composite: Element #1: 2 Pair 20 AWG Stranded Tinned Copper, PVC Insulation, Each Pair Individually Shielded with Aluminum/Polyester Tape. Element #2: 5/Conductors 20 AWG Stranded Tinned Copper, PVC Insulation, Overall Aluminum/Polyester/Aluminum Shield with Drain Wire, plus Tinned Copper Braid and PVC Jacket

A. Construction:

- 1.0 **Element #1** 20 AWG Shielded Pair
 - 1.1 Conductor: 20 AWG 7/28 Tinned Copper; OD: .038" Nom.
 - 1.2 Insulation: .010" Wall PVC; OD: .058" Nom
 - 1.3 Color Code: P1: Black, Red
P2: Blue, Yellow
 - 1.4 Pair: 2/Conductors Twisted and Shielded With Left Hand Lay
 - 1.5 Shield: Aluminum/Polyester Tape 25% Overlap (Alum Side Out)

- 2.0 **Element #2:** 20 AWG Single
 - 2.1 Conductor: 20 AWG 7/28 Tinned Copper; OD: .038" Nom.
 - 2.2 Insulation: .010" Wall PVC Nom; OD: .058" NOM
 - 2.3 Color Code: C1: White C3: Brown C5: Violet
C2: Green C4: Orange

- 3.0 **Final Assembly:** Cabled 2 Element #1 and 5 Element #2 Left Hand Lay
 - 3.1 Shield #1: Aluminum/Polyester/Aluminum Tape 25% Overlap
 - 3.2 Drain Wire: 22 AWG 7/30 Tinned Copper
 - 3.3 Shield #2: 36 AWG Tinned Copper Braid 80% Coverage
 - 3.4 Jacket: .035" PVC Color: LT. Blue
OD: .340"



- 4.0 **Marking:** Surface Printed: DOBLE 9C20 P.O. XXXXX
XXXXX= Current PO

B. Electrical Characteristics

- 1.0 Conductor DCR: 10.3 Ohms/1000 Ft

C. Approvals

- 1.0 UL Listing: AWM Style 2517

REV	DATE	CHANGE DETAIL	 General Cable 20 Forge Park, Franklin, Ma 02038 Phone: 508-541-7100 Fax: 508-541-8122	
			Description:	9/C Composite 20 AWG Shielded cable
			Drawn By:	
B	11/22/05	Updated to General Cable	Mktg Approval:	
A	1/25/02	Spec Released	Final Approval:	 1/22/05

General Cable reserves the right to modify this information without prior notification and does not make a warranty or representation of any kind, whether implied or expressed with respect to the information contained herein. General Cable assumes no risks, and will not be liable for direct or indirect, special, incidental or consequential damages, any defect or personal injury resulting from the use of this document.

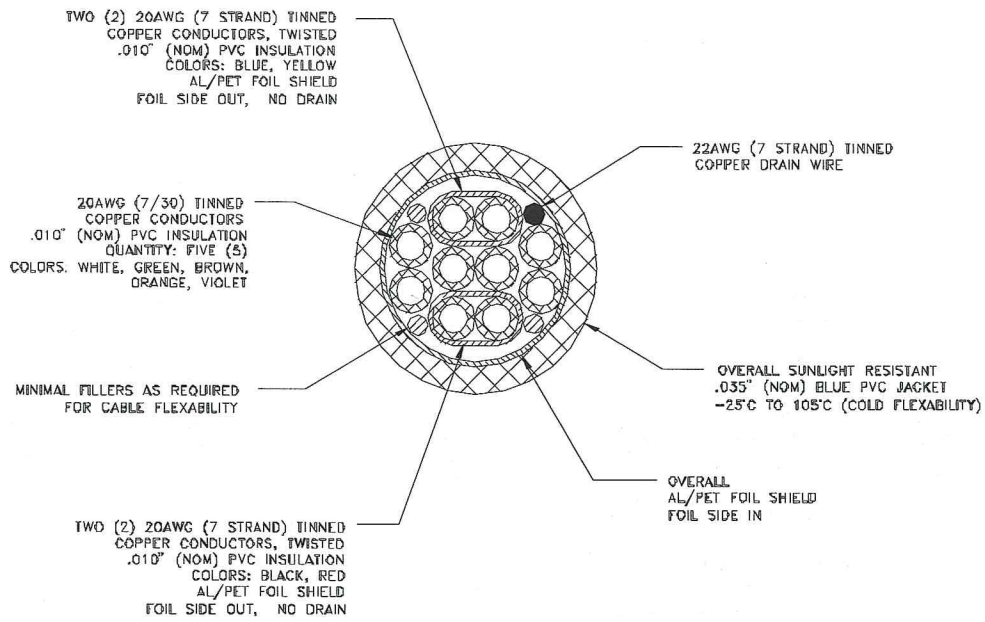


FIGURE 1: CROSS SECTION