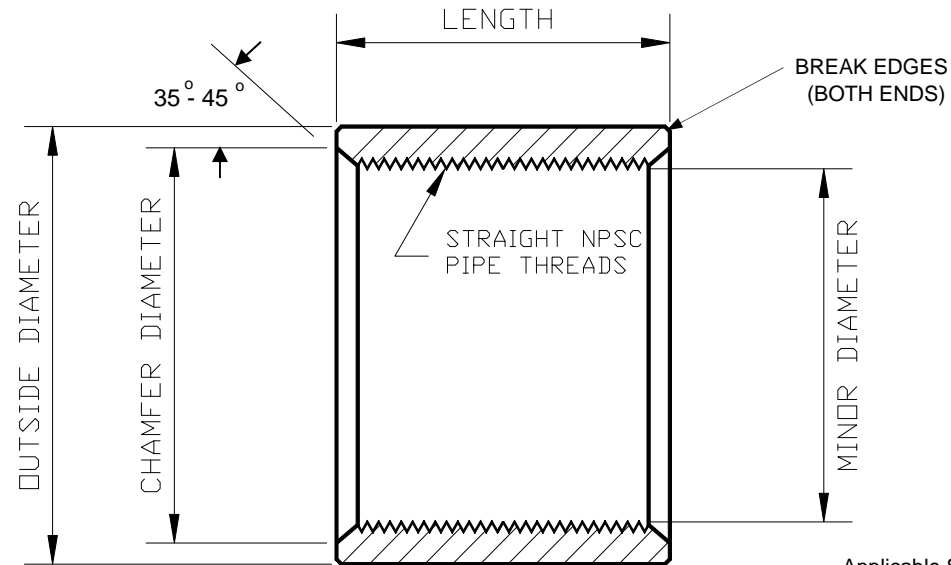




BECK MANUFACTURING STANDARD MERCHANT COUPLINGS

Form #1014



Applicable Specification: ASTM A865

SIZE	THDS PER INCH	OUTSIDE DIAMETER	LENGTH	CHAMFER DIAMETER	MINOR DIA (MIN)	NOMINAL PITCH DIA	APPROX. WT. PER 100 PCS
							(LBS.)
			+0.031 -0.031	+0.020 -0.020			
1/8"	27	.563/.568	.8125	.484	.340	.3736	3
1/4"	18	.719/.724	1.187	.625	.442	.4916	7
3/8"	18	.875/.880	1.187	.750	.577	.6270	9
1/2"	14	1.053/1.073	1.562	.921	.715	.7784	17
3/4"	14	1.303/1.323	1.625	1.140	.925	.9889	26
1"	11 1/2	1.566/1.586	2.000	1.421	1.161	1.2386	40
1 1/4"	11 1/2	1.890/1.910	2.062	1.750	1.506	1.5833	48
1 1/2"	11 1/2	2.190/2.210	2.062	2.000	1.745	1.8224	67
2"	11 1/2	2.740/2.760	2.125	2.484	2.219	2.2963	105

Plating on galvanized couplings (when specified) is in conformance with ASTM B633 Specification.