

# HITACHI CABLE AMERICA

## Customer Specification

HCM - 41426/10

### - C O N F I D E N T I A L -

**RFQ #:**

53837

**ITEM DESCRIPTION:**

SIGNAL CABLE, CONSISTING OF 5 PAIR, 26 AWG, SPIRAL SHIELDED WITH A LF PVC JACKET. (UL) 20276

**COMPONENT:**

**CONDUCTOR:**

26 AWG 19/38 TINNED COPPER  
.0187" (0.47mm) NOM OD

**INSULATION:**

ETFE  
.029" (0.74mm) NOM OD  
.0051" (0.13mm) AVG WALL

**PAIRING:**

THE COMPONENTS ARE TWISTED INTO PAIRS USING A LEFT HAND LAY.

<u>PAIR #</u>	<u>COLOR</u>	<u>PAIR #</u>	<u>COLOR</u>
1	WHT/BLK+BLK	2	WHT/BRN+BRN
3	WHT/RED+RED	4	WHT/ORN+ORN
5	WHT/YEL+YEL		

**CABLING:**

THE COMPONENTS AND FILLERS ARE CABLED TOGETHER WITH A LEFT HAND LAY AND WRAPPED WITH A PTFE FILM TAPE. 25% MIN OVERLAP ON TAPE.

**SPIRAL SHIELD:**

**CONDUCTOR:**

38 AWG TINNED COPPER  
90% MIN. COVERAGE

DUAL REVERSE SPIRAL SHIELD WITH 90% COVERAGE.

HITACHI CABLE AMERICA . 900 Holt Avenue-East Industrial Park Manchester, N.H. 03109 (603) 669-4347	Drawn By: JME      Date: 02/13/12 Checked By: PFA      Date: 02/13/12 Issued By: JME      Date: 02/13/12	REV# A
	THIS PRODUCT MADE IN THE U.S.A.	
ITEM: 41426-0010-D19-XXX-900-S-01000-4596-00	PAGE 1 of 3 Approved By:                      Date:	

# HITACHI CABLE AMERICA

## Customer Specification

HCM - 41426/10

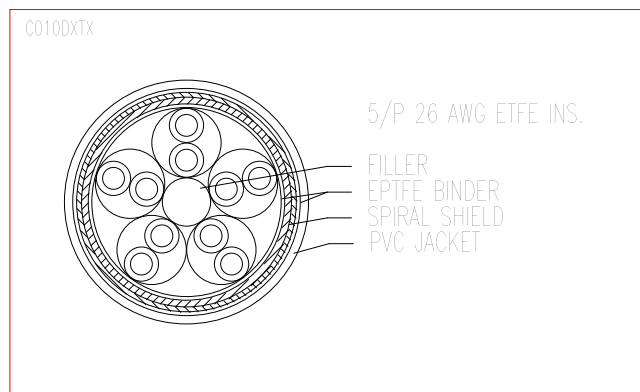
- **C O N F I D E N T I A L** -

### BINDER:

A PTFE TAPE IS WRAPPED AROUND THE SPIRAL SHIELDED CORE MINIMUM 25% OVERLAP.

### OVERALL JACKET:

PVC LF WHITE  
.219" (5.56mm) NOM OD  
.022" (0.56mm) AVG WALL



### MARKING:

THE CABLE IS IDENTIFIED WITH THE FOLLOWING PRINT LEGEND:

**HITACHI CABLE AMERICA - HCM 41426-10 5/P**

**26 AWG  AWM STYLE 20276 VW-1 -- CE RoHS**

**M/YY (XXXX) - NNNNNN**

**WHERE: M = MONTH OF MFG.**

**YY = YEAR OF MFG.**

**XXXX = JOB NUMBER**

**NNNNN = SEQUENTIAL FOOTAGE MARKERS,(ONE FOOT INTERVAL)**

### AGENCY APPROVALS:

U.L. RECOGNIZED AWM STYLE 20276, 80C, 30V.

USAGE: INTERNAL WIRING OR EXTERNAL INTERCONNECTION OF ELECTRONIC EQUIPMENT IN CLASS 2 CIRCUITS ONLY. VW-1

# HITACHI CABLE AMERICA

## Customer Specification

HCM - 41426/10

### - C O N F I D E N T I A L -

ENVIRONMENTAL COMPLIANCE\*

ROHS (RECAST) EU DIRECTIVE 2011/65/EU

\*ALLOWABLE LIMITS SUBJECT TO CHANGE - COMPLIANT ON  
DATE OF LATEST REVISION OF HITACHI SPECIFICATION.

#### TYPICAL ELECTRICAL & PHYSICAL CHARACTERISTICS:

Conductor Resistance:	45.8 Ohm/1k ft. max at 20°C 0.150 Ohm/m max at 20°C
Shield Resistance:	5.9 Ohm/1k ft. nom at 20°C 0.019 Ohm/m nom at 20°C
Insulation Resistance:	7,000 MOhm/1k ft. min 2,000 MOhm/km min
Hi-pot Test Voltage:	2,500V DC for 3-seconds
Temperature Range:	-40°C to +75°C
Cable Weight:	28.5 lbs. /1k ft. nom 42.4 kg/km nom

Rev	Revision	Date	By	Appvd	PAGE 3 of 3
A	change print delete ecoflex.	03/09/17	U	APP*	