

# COP-FLEX 2000® CLASS I

## NON-CLOTH: LIST II ZERO-HALOGEN

### DESCRIPTION

This single conductor 600/1000V RHH/RHW/LS non-halogenated cable with stranded tinned copper has an extruded insulation consisting of a crosslinked polyolefin compound. It is intended for use in telephone central office systems and other general wiring applications. Also ideal for people-intensive or critical equipment areas where low smoke, halogen free insulation systems are highly desirable. May be installed in conduit, duct, raceways, aerial, or direct burial.

### STRANDING

Annealed Class I tinned copper strand

### STANDARD

RHH/RHW per UL44. ASTM B-33 (Tinned Conductors) ASTM B-172 (Rope Lay stranded conductors). Telcordia (Bellcore) GR-347-CORE. UL 1685 LS (Limited Smoke). Rating per FT-4/IEEE1202. CSA FT-1 per C22.2 No.210.1. Oil resistant II per UL-44. Sunlight resistant for CT use 1/0 and larger. Rated 105°C AWM per UL subject 758 (style 3578/3237).

### INSULATION

Crosslinked polyolefin base compound optimized for Specifically formulated to provide rugged, self-lubricating superior performance, with the additional benefits of low-smoke and halogen free materials.

superior electrical properties. outer covering delivering

### VOLTAGE

600/1000 Volts

### TEMPERATURE

Rated 90°C dry, 75°C wet



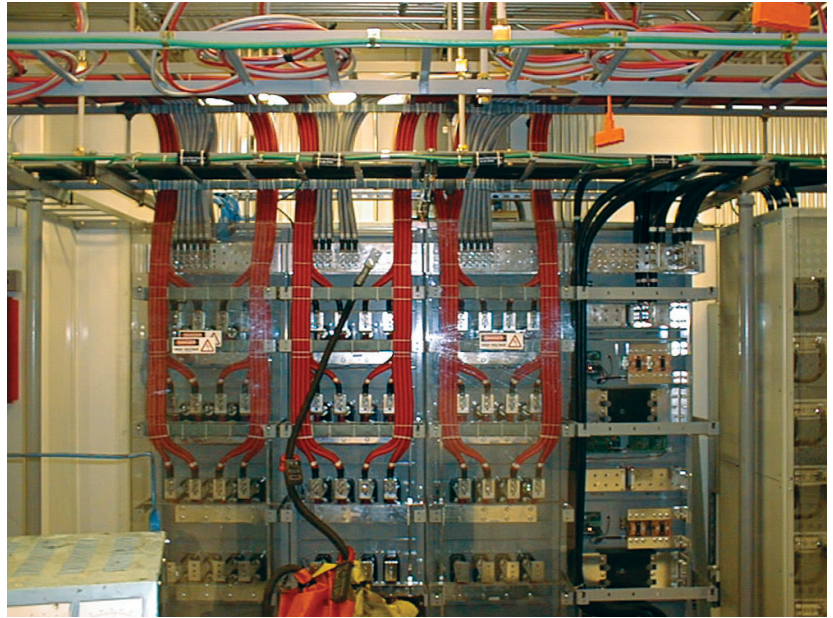
COBRA WIRE & CABLE LSZH COP-FLEX 2000® I NON HAL AWG SIZE (UL) E NUMBER RHH OR RHW- ST1 FT4 600V OR AWM 3578 OR 3237 1000V LL NUMBER CSA AWM IB 105°C FT4 600V RoHS (SIZES OVER 1/0 INCLUDE "FOR CT USE")



*Cop-flex 2000® Class I installed in a Telecom Central Office.*



**NEED LUGS?**



Cobra Part Number	Size	*Stranding Tinned Copper Class I	Insulation Thickness	Nominal OD	Ampacity		Cable Weight
	AWG				In	A*	
CPI014T	14	41 x 30^	0.045	0.171	25	35	25
CPI012T	12	65 x 30^	0.045	0.190	30	40	34
CPI010T	10	105 x 30^	0.045	0.215	40	55	49
CPI08T	8	41 x 24	0.060	0.276	55	80	79
CPI06T	6	63 x 24	0.060	0.329	75	105	117
CPI04T	4	105 x 24	0.060	0.389	95	140	175
CPI02T	2	161 x 24	0.060	0.452	130	190	253
CPI10T	1/0	266 x 24	0.080	0.578	170	260	423
CPI20T	2/0	342 x 24	0.080	0.628	195	300	538
CPI40T	4/0	532 x 24	0.080	0.743	260	405	790
CPI350T	350 MCM	888 x 24	0.095	0.946	350	570	1302
CPI500T	500 MCM	1221 x 24	0.095	1.091	430	700	1831
CPI750T	750 MCM	1850 x 24	0.110	1.329	535	885	2752

Ampacities are based on the following:

\*Condition A- Ampacities of not more than three 90°C rated single insulated conductors, rated 0 through 2000 volts, in raceway in free air, based on ambient air temperature of 30°C (86°F). Per Nec Table 310-16.

\*Condition B- Ampacities of single 90°C rated insulated conductor, rated 0 through 2000 volts, in free air, based on ambient air temperature of 30°C (86°F). Per Nec Table 310-17.

Stranding:

There are multiple strand counts that can be used to meet applicable standards. Depending on strand availability and lead time strand counts may vary slightly

^Class K stranding