

NOTE A: REFERENCE UNIT RIG P/N 53860 RELEASED IN EN86243

NOTE B:

MANUFACTURER:
BELDEN CORP
SONIC

SOURCE:
BEST

SPECIFICATIONS:

SONIC P/N 20-TE-1932-3-SXE-902/9
WIRE SIZE: 20 GA. 3 CONDUCTOR (15.08) SILVER PLATED COPPER

TYPE SHIELDED & JACKETED
COLOR CODE: 1 BLK, 1 RED, 1 WHITE
INSULATION: TFE 0.254 NOMINAL WALL THICKNESS
SHIELD: BRAIDED SILVER PLATED COPPER

JACKET: EXTRUDED FEP (SXE)

CABLE INSULATION O.D. : 4.267 NOMINAL
WEIGHT APPROXIMATELY PER 3,04,800 : 13.97 kg NOMINAL
THERMAL RATING: -65°C TO 200°C (392°C)
VOLTAGE RATING: 600 V

CABLE MUST BE IMPRINTED WITH ALL CHARACTERISTIC WHICH ARE UNDERLINED. IMPRINTING SHALL REPEAT AT INTERVALS OF 762 mm OR LESS

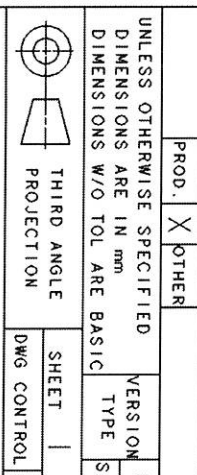
UNLESS OTHERWISE SPECIFIED

ALL BURRS AND CORNERS.	6. TOLERANCES:
R RADII 0.76	.X ±2.5
SCALE DRAWING	.XX ±0.76
LINE FINISH 3.2	.XXX ±0.254
MUST COMPLY TO 21.1	±0.5°

CONCENTRICITY OF DIAMETERS SHOWN ON AXIS: WITHIN 0.254 T.I.R.

W A T L	HT	TR
B	IE0138	ELEC WIRE
A	IE3039	DRAWING
	IE2722G	DRAWING
	IE0507E	IDENT
	IE0198R	LETTERS
	IE0013Y	CONFIDENTIAL IT
	IE0011	INTPR & TOL

UNLESS OTHERWISE SPECIFIED DIMENSIONS W/O TOL ARE BASIC		VERSION TYPE
PROD. X OTHER		ST
Caterpillar: Confidential Yellow		



THE INFORMATION HEREON IS THE PROPERTY OF CATERPILLAR SUBSIDIARIES. WITHOUT WRITTEN PERMISSION, ANY COPYING, REPRODUCTION, OR USE EXCEPT THAT FOR WHICH IT IS LOANED, IS PROHIBITED.

CABLE (3 CONDUCTOR)

432-9258