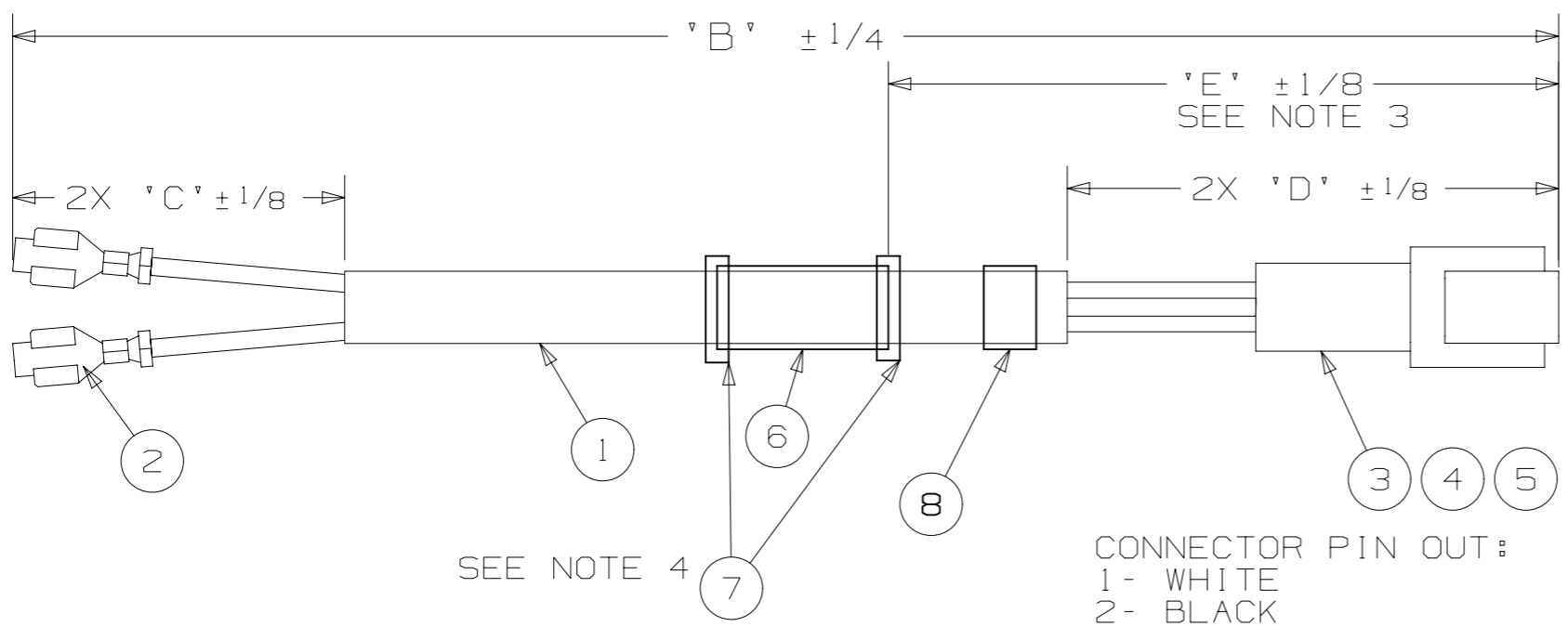


PURCHASED NUMBER	PART WEIGHT (LB)	PACKAGE	WIDTH (IN)	DEPTH (IN)	HEIGHT (IN)	QTY.	CASES PER PALLET	C.O.O.	LOT DATA
6223B	0.11	CASE	18.000	14.000	10.000	300	18	USA	N

\*\*For weight tolerance see Engineering Spec. 15ES5001.  
 \*\*\*For Metric Conversions contact Truck-Lite Engineering.

NOTES:

- 2 16GA GXL PER SAE J1128 UNLESS NOTED OTHERWISE
- ALL TERMINALS MUST PASS A 25 POUND PULL TEST.
- DIMENSION 'E' IS TO THE START OF THE BRAIDED LOOM
- TAPE TO BE APPLIED AT BOTH ENDS OF BRAIDED LOOM TO HOLD LOOM IN PLACE ON CABLE JACKET
- PARTS TO BE PACKAGED IN BUNDLES OF 20 WITH TWIST TIES
- ALL PARTS TO BE TESTED FOR CONTINUITY
- ADHESIVE, LAMINATED LABEL TO BE PLACED AS SHOWN. LABEL TO CONTAIN PART NUMBER AND DATE/LOT CODE.



SEE NOTE 4

CONNECTOR PIN OUT:  
 1 - WHITE  
 2 - BLACK

REV	DATE	DESCRIPTION	ECN	DWN	APVD
7	4-10-17	ADDED BRAIDED LOOM AND ELEC TAPE TO PART, 6223B WAS 6223A	40309A	JJP	*GRJ
X2	4-10-17	RELEASE FOR PPAP	40309A	JJP	*GRJ
6	7-22-16	UPDATED PACKGING INFO	40309A	JJP	*GRJ
X1	7-22-16	RELEASE FOR PPAP	40309A	JJP	*GRJ
5	5-10-16	UPDATED ITEMS 3,4,AND 5 TO THE DTM SERIES CONNECTOR, 6223A WAS 6223	40309A	JJP	*GRJ
4	1-26-16	INCREASED 'B' LENGTH TO 30.5	40309A	JJP	*GRJ
3	12-16-15	REMOVED NOTE 3 FROM DRAWING	40309A	JJP	*GRJ
2	11-11-15	CHANGED CABLE TO 16GA 2 CONDUCTOR, BLACK AND WHITE	40309A	JJP	*GRJ
1	11-5-15	ADDED PACKAGING INFO	40309A	JJP	*GRJ
0	10-27-15	RELEASE	40309A	JJP	*GRJ
B	10-26-15	CHANGED PART TO PURCHASED, 6223 WAS A58730	40309A	JJP	*GRJ
A	9-28-15	PRELIMINARY	40309A	JJP	*GRJ

REVISION HISTORY

THIS DRAWING CONTAINS CONFIDENTIAL PROPRIETARY INFORMATION OWNED BY TRUCK-LITE CO., LLC AND IS SUBJECT TO RETURN UPON REQUEST. THE FURNISHING OF THIS DRAWING IS NOT TO BE CONSTRUED AS THE GRANT OF ANY LICENSE, EITHER EXPRESSED OR IMPLIED, TO MANUFACTURE, HAVE MANUFACTURED, USE OR SELL THE STRUCTURES SHOWN HEREON.

REFERENCE DRW. NO.	THIRD ANGLE PROJECTION	DIMENSIONS ARE: INCHES
-		WIRE STRIP LENGTH TOL.: ±1/32 CABLE JACKET STRIP LENGTH: TOL: 0 to less than 2 ± 1/8 2 to ... ± 1/2
CUST./SUPPLIER PART NO.	CAD DATA SOURCE	CABLE CUT LENGTH: TOL. 'A': TOL. 'B':
-	UNIGRAPHICS	0 to less than 250 ± 1/2 ± 1/2 250 to less than 500 ± 2 ± 1 500 to ... ± 2 1/2 ± 1 1/2



TRUCK-LITE CO., LLC  
 FALCONER, NEW YORK USA

HARN-MIR, MACK HOOD, HEATER

SCALE:	MOLD/TOOL NO.:	PART NO.:	DRW. NO.:
NTS	-	6223B	68390A7

ITEM	DESCRIPTION	REQ.
8	LABEL - ADHESIVE, LAMINATED	1
7	TAPE-ELEC BK VNYL 3/4" THICK	A/R
6	LOOM-BRAID, 1/4" BLACK, 3" LONG	1
5	LOCK - WM2P, DEUTSCH	1
4	CONN-DEUTSCH, DTM04-2P	1
3	TERM-DEUTSCH, 1060-20-0122	2
2	TERM-AMP 42400-1, 18-14GA	2
1	CABL-CON2 FLAT 16GA BLK/WHT	'B'

32.0	1.5	2	10
'B'	'C'	'D'	'E'