

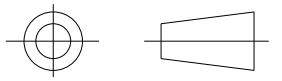
Heatshrinkable moulded shapes bulbous 3-Way Outlet Shapes, Breakout Boots - HellermannTyton

DRAWING No.
152152

SHT. 1
OF
1 SHTS.

© THE COPYRIGHT OF THIS DRAWING IS RESERVED BY HELLERMANN TYTON. IT IS ISSUED ON CONDITION THAT IT IS NOT COPIED, REPRODUCED OR DISCLOSED TO A THIRD PARTY EITHER WHOLLY OR IN PART WITHOUT THE CONSENT IN WRITING OF HELLERMANN TYTON.

THIRD ANGLE PROJECTION

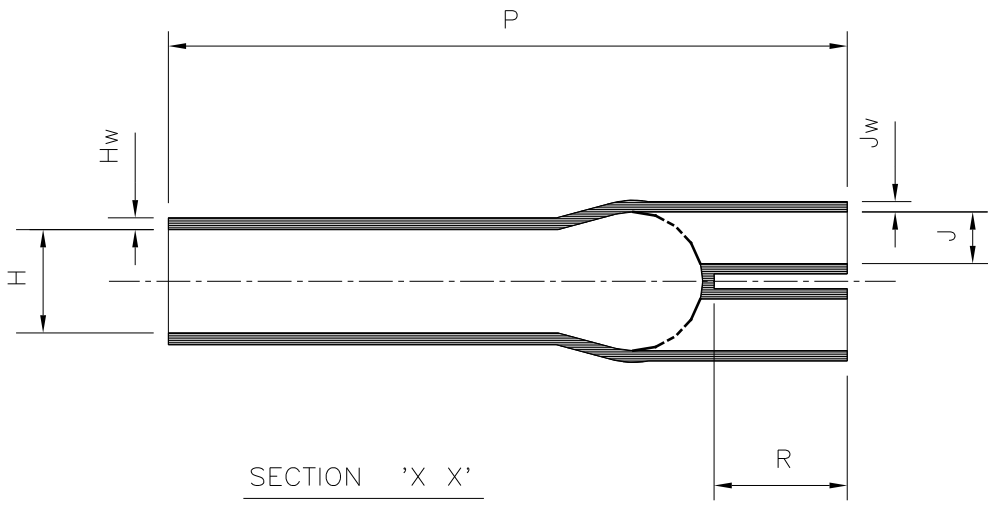


BS 8888

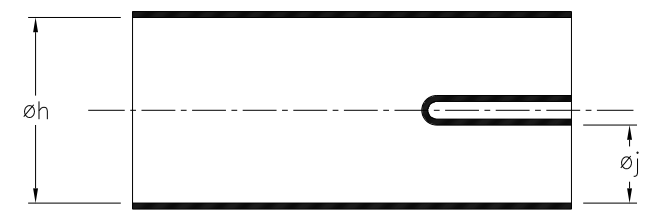
DO NOT SCALE
IF IN DOUBT ASK

Q.A.	H/S SETT
H/S Q.A.	REL. INSP.
H/S PROD	EXT.ISS.CODE

STANDARD PART (AFTER UNRESTRICTED RECOVERY)



EXPANDED (AS SUPPLIED)



PART No.	EXPANDED DIAMETERS (AS SUPPLIED)		RECOVERED DIAMETERS		RECOVERED DIMENSIONS				
	øh	øj	øH	øJ	P	R	S	Hw	Jw
	MIN	MIN	MAX	MAX	±20%	±10%	NOM	±20%	±30%
320-1	63.0 (2.48)	30.4 (1.20)	22.5 (0.89)	9.0 (0.35)	180.0 (7.09)	44.0 (1.73)	37.0 (1.46)	3.0 (0.12)	2.0 (0.08)

Heatshrinkable moulded shapes bulbous 3-Way Outlet Shapes, Breakout Boots - HellermannTyton

For information only, not subject to technical changes.

3	P1256	L.F.	09/02/09
2	P1229	G.B.	26/08/08
1	P1207	A.S.	28/05/08
ISSUE	NOTE No.	DRAWN	DATE

HellermannTyton

Pennycross Close, Plymouth, Devon, England
Tel ++44 (0) 1752 701261 Fax ++44 (0) 1752 790058

NAME	A.S.	SCALE	NTS
DATE	28/05/08	DIMS IN	mm (in)
TITLE	3 WAY OUTLET SLEEVE		

ADHESIVE	A3	SHT. 1
	ORIGINAL SHEET SIZE 420mm x 297mm	OF 1 SHTS.
PART No.	320	DRAWING No.
		152152