

Optilink-6 patch cords by Lynn Electronics are manufactured in the USA and fully comply with the TAA (Trade America Act) and the BAA (Buy America Act). Designed with the IT professional in mind, Optilink's patch cords feature a low profile snagless clip style strain relief flush mounted with the RJ45 connector, making it ideal for use in high density patch panels and switches. All Optilink patch cables can be customized for length, jacket color, boot color, jacket type and brand specific cabling.

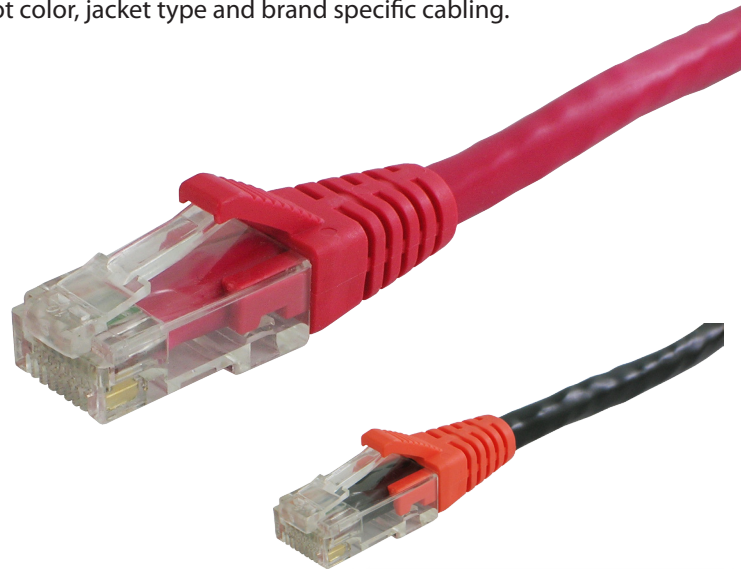
Optilink-6

Construction:

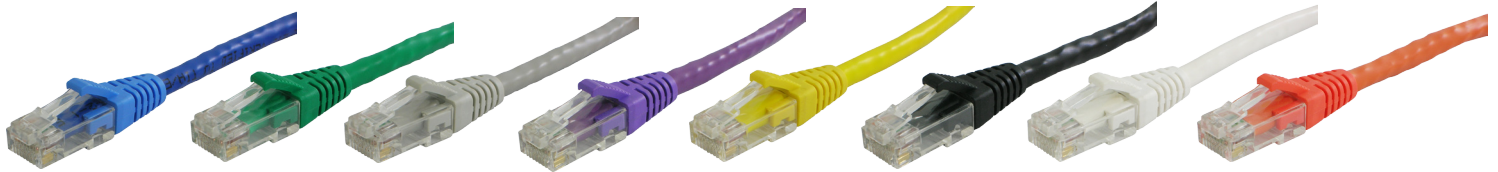
- CAT6 24AWG x 4 pair UTP, CM rated, high performance stranded patch cable
- High performance CAT6 RJ45 plugs with gold plated contacts
- Low profile snagless clip style strain relief. Available in 10 colors

Features:

- Ultra flexible, sturdy jacket
- 12 Vibrant colored jackets available
- Fully TAA and BAA compliant
- Made in the USA
- Each cable 100% tested and backed by a lifetime-warranty*



Customize the boot and jacket color to match your corporate identity, school or favorite team colors.



Optilink-6 Patch Cables

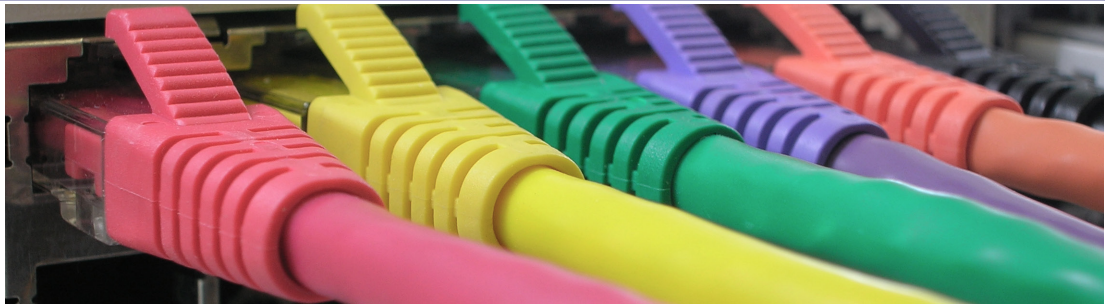
Optilink-6 CAT6 Patch Cable

	Black	Blue	Gray	Green	Orange	Purple	Red	White	Yellow
1 ft	OLG20CBKK-001	OLG20CBLB-001	OLG20CGYG-001	OLG20CGRN-001	OLG20CORO-001	OLG20CPUV-001	OLG20CRDR-001	OLG20CWHW-001	OLG20CYEY-001
3 ft	OLG20CBKK-003	OLG20CBLB-003	OLG20CGYG-003	OLG20CGRN-003	OLG20CORO-003	OLG20CPUV-003	OLG20CRDR-003	OLG20CWHW-003	OLG20CYEY-003
5 ft	OLG20CBKK-005	OLG20CBLB-005	OLG20CGYG-005	OLG20CGRN-005	OLG20CORO-005	OLG20CPUV-005	OLG20CRDR-005	OLG20CWHW-005	OLG20CYEY-005
7 ft	OLG20CBKK-007	OLG20CBLB-007	OLG20CGYG-007	OLG20CGRN-007	OLG20CORO-007	OLG20CPUV-007	OLG20CRDR-007	OLG20CWHW-007	OLG20CYEY-007
10 ft	OLG20CBKK-010	OLG20CBLB-010	OLG20CGYG-010	OLG20CGRN-010	OLG20CORO-010	OLG20CPUV-010	OLG20CRDR-010	OLG20CWHW-010	OLG20CYEY-010
14 ft	OLG20CBKK-014	OLG20CBLB-014	OLG20CGYG-014	OLG20CGRN-014	OLG20CORO-014	OLG20CPUV-014	OLG20CRDR-014	OLG20CWHW-014	OLG20CYEY-014
25 ft	OLG20CBKK-025	OLG20CBLB-025	OLG20CGYG-025	OLG20CGRN-025	OLG20CORO-025	OLG20CPUV-025	OLG20CRDR-025	OLG20CWHW-025	OLG20CYEY-025
50 ft	OLG20CBKK-050	OLG20CBLB-050	OLG20CGYG-050	OLG20CGRN-050	OLG20CORO-050	OLG20CPUV-050	OLG20CRDR-050	OLG20CWHW-050	OLG20CYEY-050
100 ft	OLG20CBKK-100	OLG20CBLB-100	OLG20CGYG-100	OLG20CGRN-100	OLG20CORO-100	OLG20CPUV-100	OLG20CRDR-100	OLG20CWHW-100	OLG20CYEY-100



Lynn Electronics corp.

Connect to the Future



Optilink-5E patch cords by Lynn Electronics are manufactured in the USA and fully comply with the TAA (Trade America Act) and the BAA (Buy America Act). Designed with the IT professional in mind, Optilink's patch cords feature a low profile snagless clip style strain relief flush mounted with the RJ45 connector, making it ideal for use in high density patch panels and switches. All Optilink patch cables can be customized for length, jacket color, boot color, jacket type and brand specific cabling.

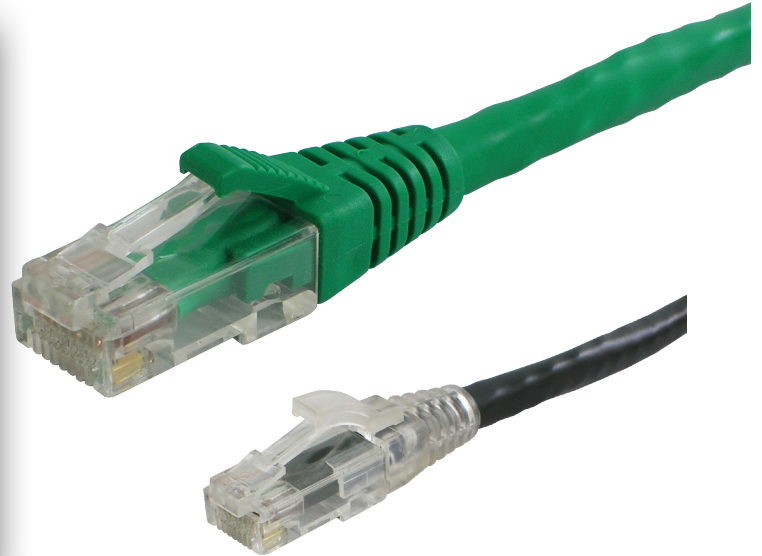
Optilink-5E

Construction:

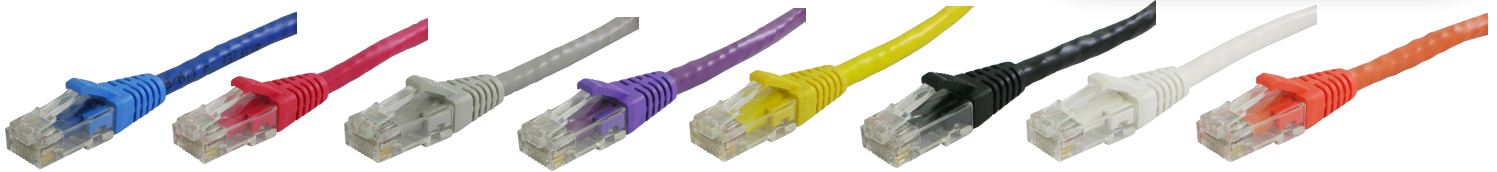
- CAT5E 24AWG x 4 pair UTP, CM rated, high performance stranded patch cable
- High performance CAT5E RJ45 plugs with gold plated contacts
- Low profile snagless clip style strain relief. Available in 10 colors

Features:

- Ultra flexible, sturdy jacket
- 16 Vibrant colored jackets available
- Fully TAA and BAA compliant
- Made in the USA
- Each cable 100% tested and backed by a lifetime warranty*



Available in bundled versions for quicker enterprise installations.



Optilink-5E Patch Cables

Optilink-5E CAT5E Patch Cable

	Black	Blue	Gray	Green	Orange	Purple	Red	White	Yellow
1 ft	OLG10ABKK-001	OLG10ABLB-001	OLG10AGYG-001	OLG10AGR-001	OLG10AORO-001	OLG10APUV-001	OLG10ARDR-001	OLG10AWHW-001	OLG10AYEY-001
3 ft	OLG10ABKK-003	OLG10ABLB-003	OLG10AGYG-003	OLG10AGR-003	OLG10AORO-003	OLG10APUV-003	OLG10ARDR-003	OLG10AWHW-003	OLG10AYEY-003
5 ft	OLG10ABKK-005	OLG10ABLB-005	OLG10AGYG-005	OLG10AGR-005	OLG10AORO-005	OLG10APUV-005	OLG10ARDR-005	OLG10AWHW-005	OLG10AYEY-005
7 ft	OLG10ABKK-007	OLG10ABLB-007	OLG10AGYG-007	OLG10AGR-007	OLG10AORO-007	OLG10APUV-007	OLG10ARDR-007	OLG10AWHW-007	OLG10AYEY-007
10 ft	OLG10ABKK-010	OLG10ABLB-010	OLG10AGYG-010	OLG10AGR-010	OLG10AORO-010	OLG10APUV-010	OLG10ARDR-010	OLG10AWHW-010	OLG10AYEY-010
14 ft	OLG10ABKK-014	OLG10ABLB-014	OLG10AGYG-014	OLG10AGR-014	OLG10AORO-014	OLG10APUV-014	OLG10ARDR-014	OLG10AWHW-014	OLG10AYEY-014
25 ft	OLG10ABKK-025	OLG10ABLB-025	OLG10AGYG-025	OLG10AGR-025	OLG10AORO-025	OLG10APUV-025	OLG10ARDR-025	OLG10AWHW-025	OLG10AYEY-025
50 ft	OLG10ABKK-050	OLG10ABLB-050	OLG10AGYG-050	OLG10AGR-050	OLG10AORO-050	OLG10APUV-050	OLG10ARDR-050	OLG10AWHW-050	OLG10AYEY-050
100 ft	OLG10ABKK-100	OLG10ABLB-100	OLG10AGYG-100	OLG10AGR-100	OLG10AORO-100	OLG10APUV-100	OLG10ARDR-100	OLG10AWHW-100	OLG10AYEY-100



Lynn Electronics corp.

Connect to the Future