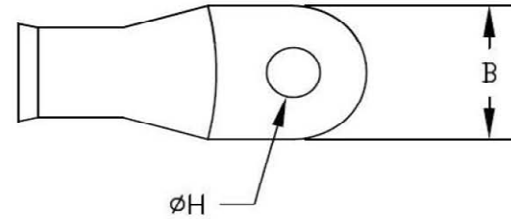
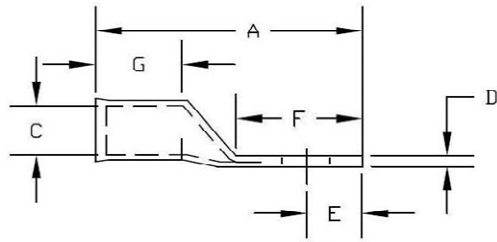


FTZ	Cable	Color Code	Stud	A	B	C	D	E	F	G	H	Barrel
Part No:	Size	Markings	Size	+/- .040"	+/- .020"	+/- .012"	+/- .015"	+/- .030"	MIN	MIN	+/- .012"	OD +/- .012"
91704	8	RED M-K	#10	1.430	.445	.185	.070	.230	.520	.600	.208	.279
91705	8	RED M-K	1/4"	1.430	.445	.185	.070	.230	.520	.600	.276	.279
91706	8	RED M-K	5/16"	1.540	.606	.185	.070	.330	.660	.600	.336	.279
91707	8	RED M-K	3/8"	1.540	.606	.185	.070	.330	.660	.600	.402	.279
91709	8	RED M-K	1/2"	1.750	.750	.185	.070	.390	.790	.600	.525	.279
91714	6	BLUE K-K	#10	1.430	.445	.220	.085	.230	.520	.600	.208	.330
91715	6	BLUE K-K	1/4"	1.430	.445	.220	.085	.230	.520	.600	.276	.330
91716	6	BLUE K-K	5/16"	1.610	.606	.220	.080	.316	.660	.600	.336	.330
91717	6	BLUE K-K	3/8"	1.610	.606	.220	.080	.316	.660	.600	.402	.330
91719	6	BLUE K-K	1/2"	1.740	.750	.220	.070	.390	.790	.600	.525	.330
91725	4	GRAY J-H	1/4"	1.975	.750	.275	.105	.375	.750	.775	.276	.425
91726	4	GRAY J-H	5/16"	1.975	.750	.275	.105	.375	.750	.775	.336	.425
91727	4	GRAY J-H	3/8"	1.975	.750	.275	.105	.375	.750	.775	.402	.425
91729	4	GRAY J-H	1/2"	1.975	.750	.275	.105	.375	.750	.775	.525	.425
91735	2	GREEN J-H	1/4"	2.125	.807	.350	.105	.400	.910	.800	.276	.484
91736	2	GREEN J-H	5/16"	2.125	.807	.350	.105	.400	.910	.800	.336	.484
91737	2	GREEN J-H	3/8"	2.125	.807	.350	.105	.400	.910	.800	.402	.484
91739	2	GREEN J-H	1/2"	2.125	.807	.350	.105	.400	.910	.800	.525	.484
91745	1-2	PINK H-H	1/4"	2.125	.807	.374	.105	.400	.910	.800	.276	.512
91746	1-2	PINK H-H	5/16"	2.125	.807	.374	.105	.400	.910	.800	.336	.512
91747	1-2	PINK H-H	3/8"	2.125	.807	.374	.105	.400	.910	.800	.402	.512
91749	1-2	PINK H-H	1/2"	2.125	.807	.374	.105	.400	.910	.800	.525	.512



FTZ	Cable	Color Code	Stud	A	B	C	D	E	F	G	H	Barrel
Part No:	Size	Markings	Size	+/- .040"	+/- .020"	+/- .012"	+/- .015"	+/- .030"	MIN	MIN	+/- .012"	OD +/- .012"
91755	1/0	BLACK E-A	1/4"	2.400	.866	0.433	.120	.430	.950	.920	.276	.571
91756	1/0	BLACK E-A	5/16"	2.400	.866	0.433	.120	.430	.950	.920	.336	.571
91757	1/0	BLACK E-A	3/8"	2.400	.866	0.433	.120	.430	.950	.920	.402	.571
91758	1/0	BLACK E-A	5/8"	2.400	.866	0.433	.120	.430	.950	.920	.640	.571
91759	1/0	BLACK E-A	1/2"	2.400	.866	0.433	.120	.430	.950	.920	.525	.571
91765	2/0	ORANGE A-C	1/4"	2.440	.921	0.472	.155	.470	.950	1.000	.276	.642
91766	2/0	ORANGE A-C	5/16"	2.440	.921	0.472	.155	.470	.950	1.000	.336	.642
91767	2/0	ORANGE A-C	3/8"	2.440	.921	0.472	.155	.470	.950	1.000	.402	.642
91768	2/0	ORANGE A-C	5/8"	2.440	.921	0.472	.155	.470	.950	1.000	.640	.642
91769	2/0	ORANGE A-C	1/2"	2.440	.921	0.472	.155	.470	.950	1.000	.525	.642
91775	3/0	PURPLE A-B	1/4"	2.480	.984	0.551	.160	.520	1.000	1.045	.276	.709
91776	3/0	PURPLE A-B	5/16"	2.480	.984	0.551	.160	.520	1.000	1.045	.336	.709
91777	3/0	PURPLE A-B	3/8"	2.480	.984	0.551	.160	.520	1.000	1.045	.402	.709
91779	3/0	PURPLE A-B	1/2"	2.480	.984	0.551	.160	.520	1.000	1.045	.525	.709
91785	4/0	YELLOW A-A	1/4"	2.575	1.100	.630	.160	.550	1.000	1.045	.276	.787
91786	4/0	YELLOW A-A	5/16"	2.575	1.100	.630	.160	.550	1.000	1.045	.336	.787
91787	4/0	YELLOW A-A	3/8"	2.575	1.100	.630	.160	.550	1.000	1.045	.402	.787
91788	4/0	YELLOW A-A	5/8"	2.575	1.100	0.630	.160	.550	1.000	1.045	.640	.787
91789	4/0	YELLOW A-A	1/2"	2.575	1.100	.630	.160	.550	1.000	1.045	.525	.787

**NOTES:**

1. MATERIAL: Annealed copper per ASTM B-152

**REVISIONS:**

Level:      Date:      Approved      Description

**PART NUMBER:**

SEE CHART ABOVE