



<b>Identification</b>	Type	BK 6-0801
	Part-No.	760801

<b>Technical data</b>		
Number of terminations	24-pole	

<b>Input</b>		
Rated current	26 A	

<b>General</b>		
Number of terminations	24-pole	
Rated current	26 A	
Contact type	Strength: 0.5 mm; smooth	
Pin spacing	6,2 mm	
Contact material	FeZn	
Housing material	PVC hard	
Colour	blue	
Class of flammability according to UL 94	V0	
Operation temperature range	-40 °C–80 °C	
Storage temperature range	-40 °C–80 °C	
Dimensions (w × h × d)	1448.0 mm	
Weight (kg/piece)	0.009	
Termination	plug-in	

26.07.2008 – Subject to technical modification

Part-No. 760801

USA: LUTZE INC.

13330 South Ridge Drive • Charlotte, NC 28273, USA  
 Tel. +1 (704) 504-0222 • Fax +1 (704) 504-0223  
 www.lutze.com • info@lutze.com

United Kingdom: LÜTZE Ltd.

Unit 3, Sandy Hill Park  
 Sandy Way, Amington • GB-Tamworth, Staffs B77 4DU  
 Tel. +44 (0)1827 31333-0 • Fax +44 (0)1827 31333-2  
 www.lutze.com • sales.gb@lutze.co.uk

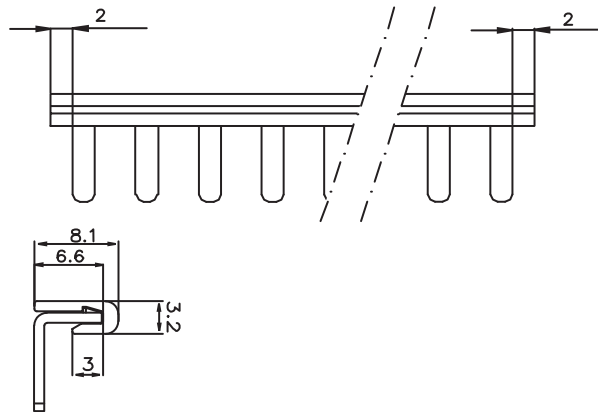


Systematic Technology

PU

5

**Dimensions**



26.07.2008 – Subject to technical modification

Part-No. 760801

USA: LUTZE INC.

13330 South Ridge Drive • Charlotte, NC 28273, USA

Tel. +1 (704) 504-0222 • Fax +1 (704) 504-0223

www.lutze.com • info@lutze.com

United Kingdom: LÜTZE Ltd.

Unit 3, Sandy Hill Park

Sandy Way, Amington • GB-Tamworth, Staffs B77 4DU

Tel. +44 (0)1827 31333-0 • Fax +44 (0)1827 31333-2

www.lutze.com • sales.gb@lutze.co.uk



**Systematic Technology**