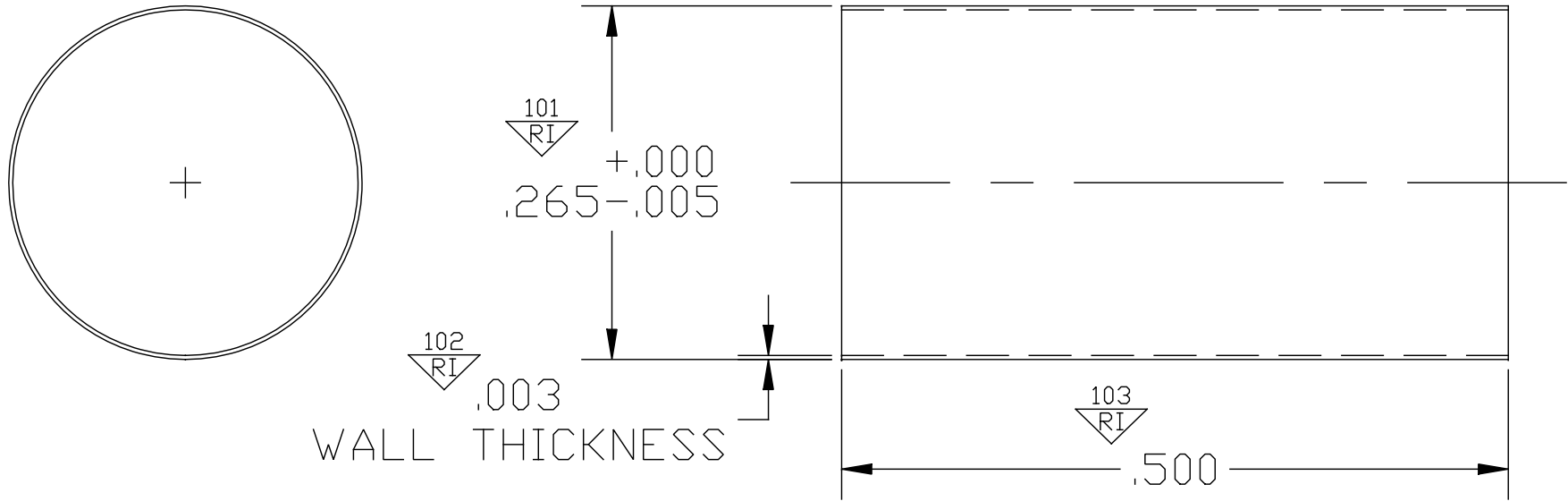


REV	ECN	DATE	DESCRIPTION	BY
A		04/23/73	PRODUCTION RELEASE	KC
-	920	01/06/00	REDRAWN ON AUTOCAD	HG



104  
 RI  
 NOTES:  
 1) MATERIAL - MYLAR.  
 2) LITTELFUSE DWG# -895-039-001

VCC CONTROL PLAN #				
TOLERANCES UNLESS OTHERWISE SPECIFIED		VISUAL COMMUNICATIONS COMPANY, LLC 12780 DANIELSON COURT, SUITE A POWAY, CA 92064		
INCHES .XX ± .010 .XXX ± .005				
FRACTIONAL X/X ± 1/64	PART # -895-039-001	SCALE: 1	DRAWN BY: KC CHECKED BY: BC APPROVED BY: BC	DATE: 12/18/72 DATE: DATE:
ANGULAR ∠'S ± 1/2 °	DESCRIPTION: INSULATOR (SLEEVE)			
UNLESS OTHERWISE SPECIFIED ALL DIMENSIONS ARE IN INCHES. METRIC DIMENSIONS WILL BE WITHIN CXXI	DRAWING NO.	P740773		REV. A

APPROVED FOR PRODUCTION ON 2/24/00  
 THIS DOCUMENT IS THE PROPERTY OF VISUAL COMMUNICATIONS COMPANY, LLC. ITS USE OR REPRODUCTION IS AUTHORIZED ONLY FOR RESPONDING TO A REQUEST FOR QUOTATION OR FOR THE PERFORMANCE OF WORK FOR VISUAL COMMUNICATIONS COMPANY, LLC. ALL QUESTIONS MUST BE REFERRED TO VISUAL COMMUNICATIONS COMPANY, LLC. THIS DRAWING IS CONSIDERED AN UNCONTROLLED DOCUMENT ONCE PRINTED (HARDCOPY). MASTER DRAWINGS ARE CONTROLLED BY ENGINEERING ON THE SERVER.